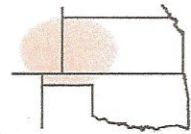


**Pro-Stake LLC**  
 Oil Field & Construction Site Staking  
 P.O. Box 2324  
 Garden City, Kansas 67846  
 Office/Fax: (620) 276-6159  
 Cell: (620) 272-1499



**q111711-h**  
 PLAT NO.

**9685**  
 INVOICE NO.

**American Warrior Inc.**  
 OPERATOR  
**Hodgeman County, KS**  
 COUNTY

**Irsik #1-3**  
 LEASE NAME  
**335' FNL - 1300' FWL**  
 LOCATION SPOT

SCALE: **1" = 1000'**  
 DATE STAKED: **Nov. 17<sup>th</sup>, 2011**  
 MEASURED BY: **Luke R.**  
 DRAWN BY: **Luke R.**  
 AUTHORIZED BY: **Cecil O.**

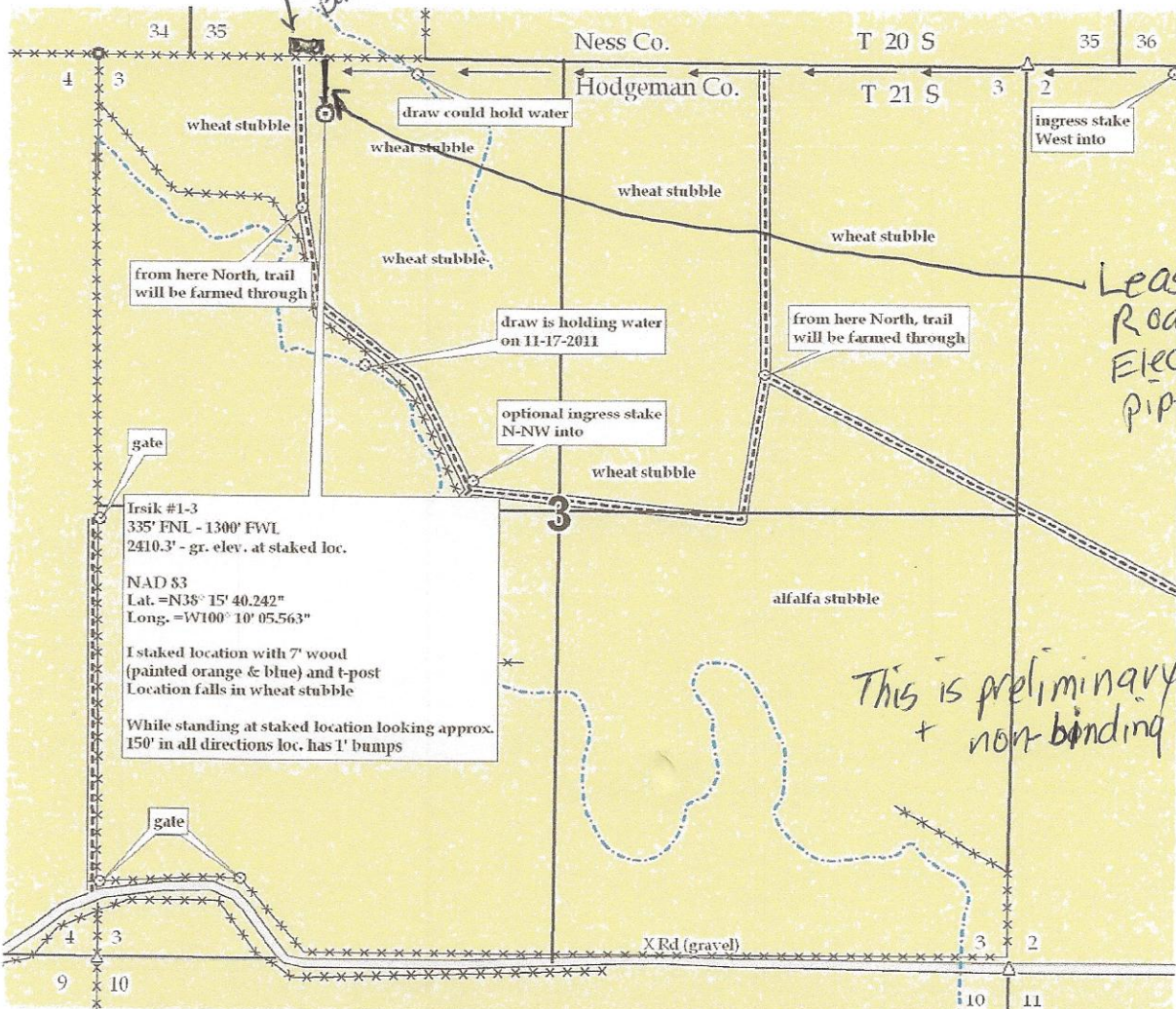
**3 21s 26w**  
 Sec. Twp. Rng.



GR. ELEVATION: **2410.3'** PROSPECT

**Directions:** From the North side of Jetmore, Ks at the intersection of Hwy 156 & Hwy 283 - Now go 13.5 miles West on Hwy 156 - Now go 12 miles North on 206 Rd - Now go 0.8 mile West on X Rd to ingress stake North into - Now go 1 mile North on trail to ingress stake West into - Now go approx. 1435' West through wheat stubble to the NE corner of section 3-21s-26w - Now go approx. 4000' West through wheat stubble - Now go 335' South through wheat stubble into staked location.  
**Final ingress must be verified with land owner or Operator.**

*This drawing does not constitute a monumented survey or a land survey plat.  
 This drawing is for construction purposes only.*



Irsik #1-3  
 335' FNL - 1300' FWL  
 2410.3' - gr. elev. at staked loc.  
 NAD 83  
 Lat. = N35° 15' 40.242"  
 Long. = W100° 10' 05.563"  
 I staked location with 7' wood (painted orange & blue) and t-post  
 Location falls in wheat stubble  
 While standing at staked location looking approx. 150' in all directions loc. has 1' bumps

*This is preliminary  
 + non-binding*

*Lease Road  
 Electric Line  
 Pipe Line Line*