



TRILOBITE TESTING, INC.

DRILL STEM TEST REPORT

Shakespeare Oil Co. LLC

23/13s/31w

202 W Main St.
Salem IL, 62881

Zerr Trust 2-23

Job Ticket: 42275

DST#: 1

ATTN: Pat Deenihan

Test Start: 2011.10.06 @ 08:05:27

GENERAL INFORMATION:

Formation: **Lansing B**

Deviated: No Whipstock: ft (KB)

Time Tool Opened: 12:01:27

Time Test Ended: 17:04:42

Test Type: Conventional Bottom Hole (Initial)

Tester: Mike Slempp

Unit No: 53

Interval: 3972.00 ft (KB) To 4008.00 ft (KB) (TVD)

Reference Elevations: 2892.00 ft (KB)

Total Depth: 4008.00 ft (KB) (TVD)

2882.00 ft (CF)

Hole Diameter: 7.78 inches Hole Condition: Good

KB to GR/CF: 10.00 ft

Serial #: 8677

Inside

Press @ Run Depth: 219.12 psig @ 3974.00 ft (KB)

Capacity: 8000.00 psig

Start Date: 2011.10.06

End Date:

2011.10.06

Last Calib.:

2011.10.06

Start Time: 08:05:28

End Time:

17:04:42

Time On Btm:

2011.10.06 @ 12:00:12

Time Off Btm:

2011.10.06 @ 14:20:12

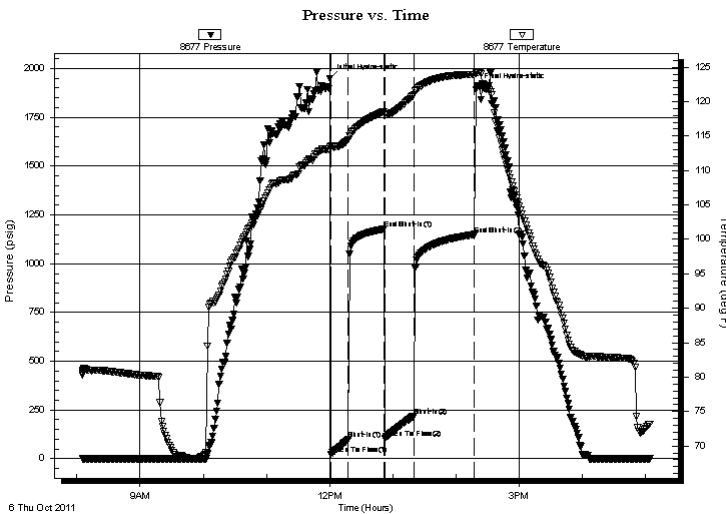
TEST COMMENT: IF- Strong Blow BOB in 13 min

ISI- No blow back

FF- BOB in min 15 min

FSI- No blow back

PRESSURE SUMMARY



Time (Min.)	Pressure (psig)	Temp (deg F)	Annotation
0	1948.46	113.50	Initial Hydro-static
2	24.57	113.51	Open To Flow (1)
18	98.40	114.47	Shut-In(1)
52	1177.08	118.53	End Shut-In(1)
53	106.04	118.15	Open To Flow (2)
80	219.12	120.97	Shut-In(2)
138	1149.93	123.92	End Shut-In(2)
140	1902.60	124.19	Final Hydro-static

Recovery

Length (ft)	Description	Volume (bbl)
434.00	95% water 5% mud	6.09

Gas Rates

Choke (inches)	Pressure (psig)	Gas Rate (Mcf/d)



**TRILOBITE
TESTING, INC.**

DRILL STEM TEST REPORT

FLUID SUMMARY

Shakespeare Oil Co. LLC

23/13s/31w

202 W Main St.
Salem IL, 62881

Zerr Trust 2-23

Job Ticket: 42275

DST#: 1

ATTN: Pat Deenihan

Test Start: 2011.10.06 @ 08:05:27

Mud and Cushion Information

Mud Type: Gel Chem

Cushion Type:

Oil API:

deg API

Mud Weight: 9.00 lb/gal

Cushion Length:

ft

Water Salinity:

48000 ppm

Viscosity: 51.00 sec/qt

Cushion Volume:

bbbl

Water Loss: 7.60 in³

Gas Cushion Type:

Resistivity: ohm.m

Gas Cushion Pressure:

psig

Salinity: 2300.00 ppm

Filter Cake: inches

Recovery Information

Recovery Table

Length ft	Description	Volume bbl
434.00	95%water5%mud	6.088

Total Length: 434.00 ft

Total Volume: 6.088 bbl

Num Fluid Samples: 0

Num Gas Bombs: 0

Serial #:

Laboratory Name:

Laboratory Location:

Recovery Comments:

Pressure vs. Time

