



**TRILOBITE  
TESTING, INC.**

# DRILL STEM TEST REPORT

Shakespeare Oil Co. LLC

**23/13s/31w Gove, Ks**

202 W Main St.  
Salem IL, 62881

**Zerr Trust # 2-23**

ATTN: Pat Deenihan

Job Ticket: 45403

**DST#: 4**

Test Start: 2011.10.10 @ 10:50:24

## GENERAL INFORMATION:

Formation: **Johnson**

Deviated: No Whipstock: 0.00 ft (KB)

Time Tool Opened: 13:04:24

Time Test Ended: 18:15:54

Test Type: Conventional Bottom Hole (Reset)

Tester: Shane McBride

Unit No: 55

**Interval: 4492.00 ft (KB) To 4532.00 ft (KB) (TVD)**

Reference Elevations: 2892.00 ft (KB)

Total Depth: 4532.00 ft (KB) (TVD)

2882.00 ft (CF)

Hole Diameter: 7.78 inches Hole Condition: Fair

KB to GR/CF: 10.00 ft

**Serial #: 6667 Inside**

Press @ Run Depth: 23.07 psig @ 4493.00 ft (KB)

Capacity: 8000.00 psig

Start Date: 2011.10.10

End Date:

2011.10.10

Last Calib.: 2011.10.10

Start Time: 10:50:24

End Time:

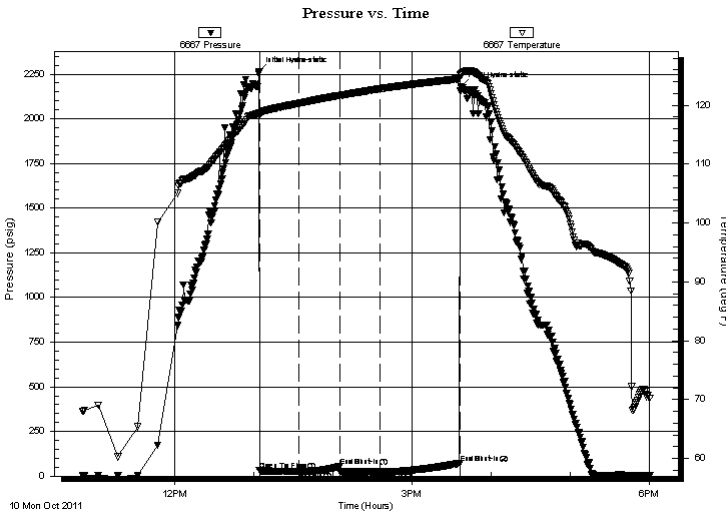
17:59:54

Time On Btm: 2011.10.10 @ 13:04:09

Time Off Btm: 2011.10.10 @ 15:36:54

**TEST COMMENT:** 1/4" in blow died in 12 min.  
No return  
Bubble to open tool No blow  
No return

## PRESSURE SUMMARY



Time (Min.)	Pressure (psig)	Temp (deg F)	Annotation
0	2265.73	118.78	Initial Hydro-static
1	31.55	118.23	Open To Flow (1)
31	26.23	120.31	Shut-In(1)
61	53.90	121.66	End Shut-In(1)
62	24.69	121.66	Open To Flow (2)
92	23.07	122.77	Shut-In(2)
152	72.12	124.47	End Shut-In(2)
153	2181.98	125.24	Final Hydro-static

## Recovery

Length (ft)	Description	Volume (bbl)
3.00	mud w/oil spots 100%m	0.04

\* Recovery from multiple tests

## Gas Rates

Choke (inches)	Pressure (psig)	Gas Rate (Mcf/d)



**TRILOBITE  
TESTING, INC.**

# DRILL STEM TEST REPORT

**FLUID SUMMARY**

Shakespeare Oil Co. LLC

**23/13s/31w Gove, Ks**

202 W Main St.  
Salem IL, 62881

**Zerr Trust # 2-23**

Job Ticket: 45403

**DST#: 4**

ATTN: Pat Deenihan

Test Start: 2011.10.10 @ 10:50:24

## Mud and Cushion Information

Mud Type: Gel Chem

Cushion Type:

Oil API:

0 deg API

Mud Weight: 9.00 lb/gal

Cushion Length:

ft

Water Salinity:

0 ppm

Viscosity: 53.00 sec/qt

Cushion Volume:

bbf

Water Loss: 6.40 in<sup>3</sup>

Gas Cushion Type:

Resistivity: 0.00 ohm.m

Gas Cushion Pressure:

psig

Salinity: 2800.00 ppm

Filter Cake: 1.00 inches

## Recovery Information

Recovery Table

Length ft	Description	Volume bbf
3.00	mud w/oil spots 100%m	0.042

Total Length: 3.00 ft      Total Volume: 0.042 bbf

Num Fluid Samples: 0

Num Gas Bombs: 0

Serial #:

Laboratory Name:

Laboratory Location:

Recovery Comments:

