



**TRILOBITE  
TESTING, INC.**

# DRILL STEM TEST REPORT

Grand Mesa Operating Company

**21-16s-33w**

1700 N Waterfront PKWY  
BLDG 600 Wichita KS  
67206-5514  
ATTN: John Goldsmith

**Unruh 1-21**

Job Ticket: 44333

**DST#: 2**

Test Start: 2011.10.21 @ 08:00:00

## GENERAL INFORMATION:

Formation: **Pleasaton**

Deviated: No Whipstock: ft (KB)

Time Tool Opened: 10:00:00

Time Test Ended: 13:37:15

Test Type: Conventional Bottom Hole (Reset)

Tester: Jace McKinney

Unit No: 28

**Interval: 4365.00 ft (KB) To 4398.00 ft (KB) (TVD)**

Reference Elevations: 3082.00 ft (KB)

Total Depth: 4398.00 ft (KB) (TVD)

3077.00 ft (CF)

Hole Diameter: 7.88 inches Hole Condition: Fair

KB to GR/CF: 5.00 ft

**Serial #: 8675 Inside**

Press @ Run Depth: 14.20 psig @ 4366.00 ft (KB)

Capacity: 8000.00 psig

Start Date: 2011.10.21

End Date:

2011.10.21

Last Calib.: 2011.10.21

Start Time: 08:00:01

End Time:

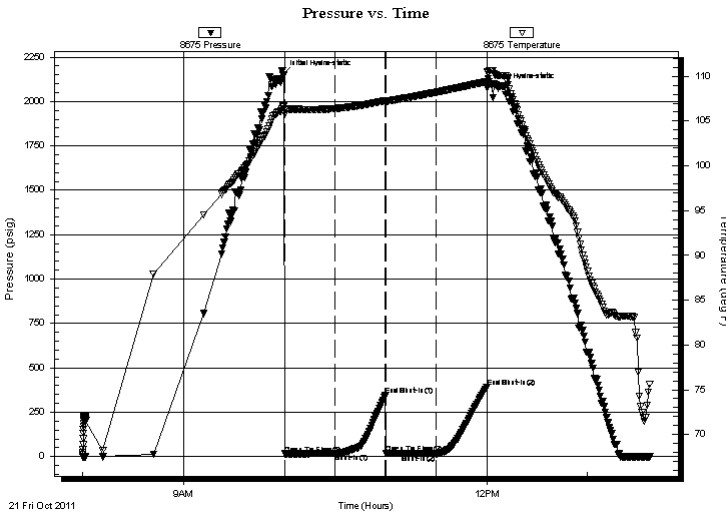
13:37:15

Time On Btm: 2011.10.21 @ 09:59:00

Time Off Btm: 2011.10.21 @ 12:00:15

**TEST COMMENT:** Built to 1/4" blow  
No return blow  
No blow  
No return blow

## PRESSURE SUMMARY



Time (Min.)	Pressure (psig)	Temp (deg F)	Annotation
0	2151.88	106.62	Initial Hydro-static
1	15.13	105.78	Open To Flow (1)
31	16.67	106.40	Shut-In(1)
61	344.27	107.29	End Shut-In(1)
61	16.86	107.08	Open To Flow (2)
91	14.20	108.22	Shut-In(2)
121	393.00	109.40	End Shut-In(2)
122	2076.05	110.55	Final Hydro-static

## Recovery

Length (ft)	Description	Volume (bbl)
1.00	100% Mud	0.00

\* Recovery from multiple tests

## Gas Rates

Choke (inches)	Pressure (psig)	Gas Rate (Mcf/d)



**TRILOBITE  
TESTING, INC.**

# DRILL STEM TEST REPORT

**FLUID SUMMARY**

Grand Mesa Operating Company

**21-16s-33w**

1700 N Waterfront PKWY  
BLDG 600 Wichita KS  
67206-5514  
ATTN: John Goldsmith

**Unruh 1-21**

Job Ticket: 44333

**DST#: 2**

Test Start: 2011.10.21 @ 08:00:00

## Mud and Cushion Information

Mud Type: Gel Chem

Mud Weight: 9.00 lb/gal

Viscosity: 56.00 sec/qt

Water Loss: 7.99 in<sup>3</sup>

Resistivity: 0.00 ohm.m

Salinity: 3600.00 ppm

Filter Cake: 1.00 inches

Cushion Type:

Cushion Length: ft

Cushion Volume: bbl

Gas Cushion Type:

Gas Cushion Pressure: psig

Oil API:

Water Salinity: deg API

ppm

## Recovery Information

Recovery Table

Length ft	Description	Volume bbl
1.00	100% Mud	0.005

Total Length: 1.00 ft      Total Volume: 0.005 bbl

Num Fluid Samples: 0

Num Gas Bombs: 0

Serial #:

Laboratory Name:

Laboratory Location:

Recovery Comments:

Serial #: 8675

Inside

Grand Mesa Operating Company

Unruh 1-21

DST Test Number: 2

