

GEOLOGIST'S REPORT  
DRILLING TIME AND SAMPLE LOG

OPERATOR Trans Pacific Oil Corp.

WELL Ketzenmeier 'A' WELL NO. #1-2

FIELD NE NE NE

SECTION 2 TWP. 16S RGE 9W

COUNTY Ellsworth STATE Kansas

Royal Rig #2  
10-19-11 3215  
10-25-11 3216  
2300 TD  
2300 TD  
2300 TD  
2300 TD  
2200 chemical

ELEVATION  
KB 1738  
DF  
OL 1731  
Measurements Are At  
From KB

CASING RECORD  
SURFACE 058° set at  
279' w/200 sx.  
PRODUCTION  
DIA

LOGGING  
CNFD  
DIL - Superior  
Sonic  
Micro



# 15-053-21,269

WELL	TIME	W.P.	FORM	DIFF
Howard	2311 (-573)	2312 (-574)	NA	
Topeka	2403 (-665)	2405 (-667)	+3	
Heebner	2659 (-921)	2658 (-920)	+1	
Toronto	2677 (-939)	2677 (-939)	+1	
Brown Ln	2772 (-1034)	2771 (-1033)	-4	
Lansing	2787 (-1049)	2787 (-1049)	-2	
Mun Creek	2936 (-1198)	2936 (-1198)	+7	
Stark	3016 (-1278)	3017 (-1279)	+12	
B/KC	3090 (-1352)	3092 (-1354)	+10	
Abuckle	3161 (-1423)	3160 (-1422)	-1	
RTD		3215 (-1477)		
LTD	3216 (-1478)			

Trans Pacific Oil Corp.  
Janzen 'A' #1-35 W/2 NWSE 35-155-9W

LEGEND

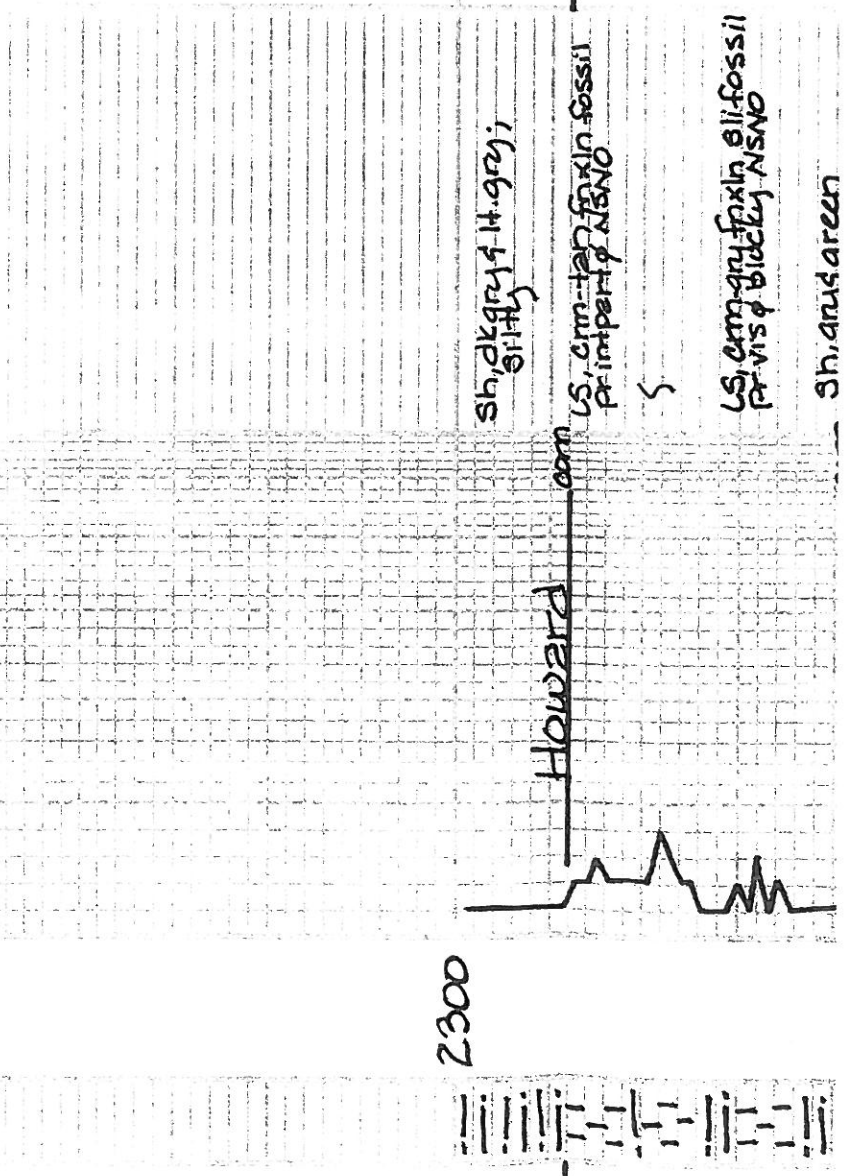
- Dolomite
- Clay
- Oil Lime
- Limestone
- Core sh
- Shell
- Sandstone
- Sand
- Gravel

DRILLING TIME IN MINUTES  
PER FOOT  
Base of immediate formation

REMARKS

STRATIGRAPHY

DEPTH



2300

EL 2311 (-573)

EL 2311 (573)

sh dk gray & lt gray;  
silty

LS, crm-tan fnx in fossil  
pr int part of NSNO

§

LS, crm-gray fnx in silty fossil  
pr vis of blocky NSNO

com sh, gray & green

LS, tan-gray fnx in v. fossil  
pr fossiliferous overall  
dense NSNO

LS, tan-gray fnx in silty  
fossil pr int part of silty  
pss chert NSNO

com

sh, dk gray & green;  
silty

sh, predom dk gray

2400

EL 2403 (6665)

Topoka

LS, tan-gray fnx in fossil  
pr int part of NSNO

LS, crm-tan fnx in silty  
fossil pr int part of NSNO

sh, gray & green

com LS, crm-white fnx in fossil  
pr fr int part of NSNO  
no odor; barren sc fls  
gray & white

§

LS, crm fnx in silty fossil  
pr vis of NSNO

com sh, gray & green

LS, crm-tan fnx in silty  
fossil pr int part of  
NSNO

LS, crm fnx in v. pel  
cherty pr fr int part of  
NSNO

com sh, blk carbonaceous

sh, gray & green

LS, crm fnx in fossil w/ dk  
inclusions pr fr int part of  
NSNO sc gray

sh, lt. gray & green; silty

com

LS, crm-gray fnx in fossil  
pr int part of NSNO

LS, crm-tan fnx in fossil  
pr int part of NSNO sc tan  
& gray

LS, tan fnx in v. fossil  
pr fossiliferous barren  
NSNO sc tan & gray

com

LS, tan fnx in pr vis of  
dense NSNO

sh, blk carbonaceous

2500





2600

2700

2800

Plattsmouth

Sh, blk carbonaceous  
LS, arm-gry, fnx in fossil  
ool print part & NSNO

LS, gry, tan, fnx in fossil  
print part & NSNO rare  
pcs pyrite

LS, arm, fnx in fossil & ool  
print part & subchalky  
NSNO ss, gry &

Sh, dk gry & lt. gry

com  
LS, arm, fnx in fossil &  
ool silt pcs w/ poss 2nd x in  
green print part  
green NSNO ss pcs w/lt  
mshy chalk

LS, arm, fnx in fossil pr  
imp part & NSNO

LS, ctm, fnx in fossil  
print part & chalky  
NSNO

com  
Sh, blk carbonaceous

Heebner

Sh, gry, green, maroon

Toronto

com  
LS, arm, fnx in fossil & ool  
over all print part &  
subchalky NSNO

Sh, abun, gry, green  
in green (stamps) washing  
red

Sh, gry, green, maroon  
abun, ss clusters, fnx in  
print part & micaceous  
fossil NSNO

com  
Sh, AA w/ abun, ss clusters  
fnx in med gr. much cleaner  
ad micaceous NSNO

Sh, lt. gry, green, abun  
ss clusters, fnx in med gr  
print part & micaceous  
NSNO

com  
Sh, gry, v. silty w/  
few ss clusters AA

Sh, gry & green

Brown Limestone

com  
LS, tan, brown, fnx in fossil  
w/ dk inclusions, PE  
imp part & dense NSNO

Lansing

Sh, gry & green

com  
LS, arm, gry, fnx in silty  
fossil print part & subchalky  
pyrite NSNO

20' 70

30' 70

50' 70

com  
Sh, gry, green, maroon  
LS, arm, gry, fnx in fossil  
silt pcs, PE, fr, imp part  
mostly dense NSNO ss, gry &  
Sh, gry & green

LS, wht, fnx in y. ool dolomitic  
PE, ss, fr & green, brown, 1-2  
pcs, v. lt. brown silt, silt  
silt odor

LS, arm, gry, fnx in v. ool dolomite  
pyrite, fr, imp part, brown silt  
subalky silt, silt, silt, silt, silt  
silt, silt, silt, silt, silt, silt, silt, silt

com  
Sh, dk gry & green  
LS, arm, tan, fnx in, PE, v. silty &

EL 2659 (-92)

EL 2677 (-93)

Pipe Strap 281  
1.26 Board Lane

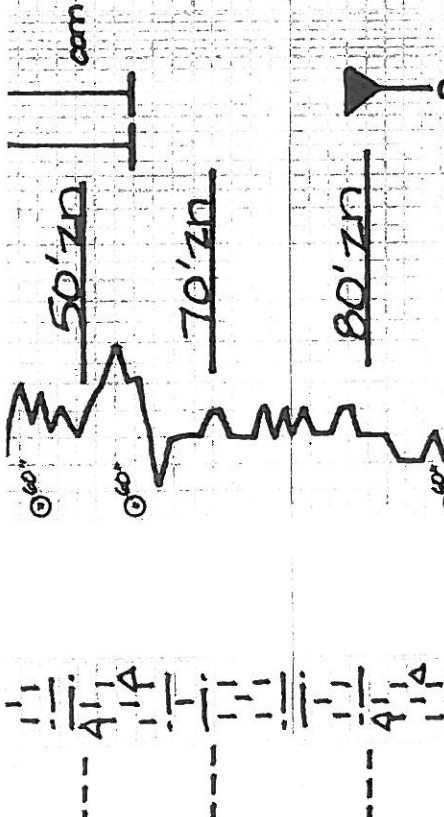
EL 2772 (-103)

EL 2787 (-104)

DST #1:  
1st Op: Bldg 3/4" in;  
min, decr to sfc;  
Died 28"  
No Blowback  
2nd Op: Dead  
No Blowback  
Rec: 130' Mud #  
IFP: 27-25# / 30"  
ISIP: 1312# / 30" #  
FFP: 59-94# / 30"  
FSIP: 386# / 60"  
# Note: Tool null

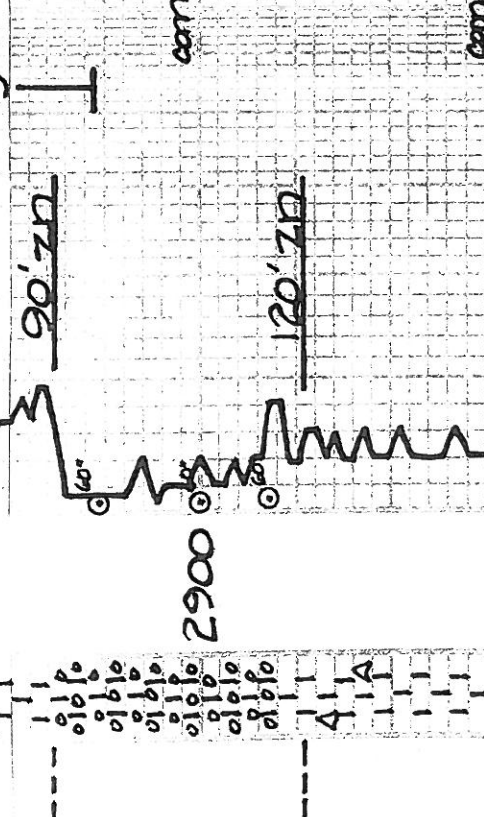
FFP: 59-94#/30"  
 FSIP: 386#/60"  
 # Note: Tool pull  
 too high by dri like  
 when closing too  
 for 1st shut-in,  
 plr unseated -- r  
 plr on 2nd oper  
 ISIP not valid --  
 much of recover  
 due to unseated

blk; sil. fr. qtz. ss. blk. m. gas on  
 sh, dk. gry. green  
 LS, arg. tan. fn. xln. pr. vis. φ  
 barren NSNO sc. tan. Δ  
 LS, arg. tan. fn. xln. pyritic  
 vis. φ NSNO sim. pyritic  
 sh, gry. green, maroon



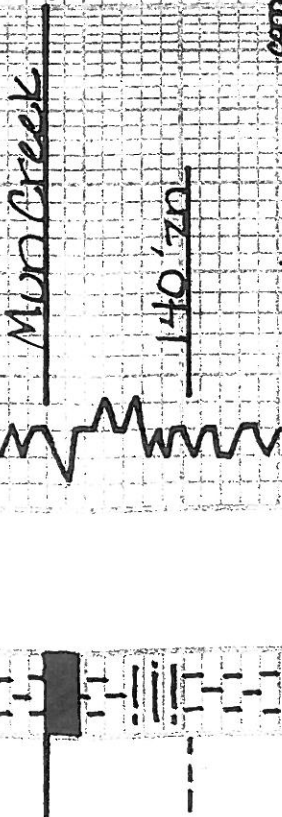
DST # 2:  
 1 stop: SFC Blow  
 Throughout  
 No Blowback  
 2nd op: Gd Blow B  
 No Blowback  
 Rec:  
 30' GIP  
 30' G 40 WCM  
 (5% G, 5% O, 15% W,  
 -- Clean Oil in TC

LS, wh. arg. tan. fn. xln. pr. vis. φ  
 LS, arg. tan. fn. xln. v. coc  
 dolomitic. fr. ad. φ. ss. pebbled  
 brown subpart. sh. L. ad. sim. φ  
 barren S. FSIP. act. v. gas  
 bubbles on blk. sil. odor. for  
 circ. sim. pred. in barren  
 AA, coc. φ. totally barren NSNO  
 LS, arg. tan. fn. xln. v. coc. pr. fr. φ  
 dolomitic. barren NSNO  
 LS, arg. tan. fn. xln. pr. vis. φ  
 with arg. tan. NSNO sc  
 LS, arg. tan. fn. xln. pr. int. part φ  
 dense NSNO sil. v. pebb  
 with chalk



EL 2936 (-1198)  
 1FP: 27-28#/30"  
 ISIP: 159#/60"  
 FFP: 35-37#/90"  
 FSIP: 170#/90"  
 Chlor: 13,000 pp

sh, blk. carbonaceous  
 LS, tan. gry. fn. xln. v. fossil  
 pr. int. part φ NSNO  
 sh, dk. gry. green  
 LS, arg. tan. fn. xln. sil.  
 fossil. pr. vis. φ dense  
 NSNO  
 LS, arg. tan. fn. xln. subool  
 pr. int. part φ. sm. appers  
 sh. arg. tan. NSNO  
 AA  
 LS, arg. tan. fn. xln. v. coc.  
 pr. vis. φ dense NSNO



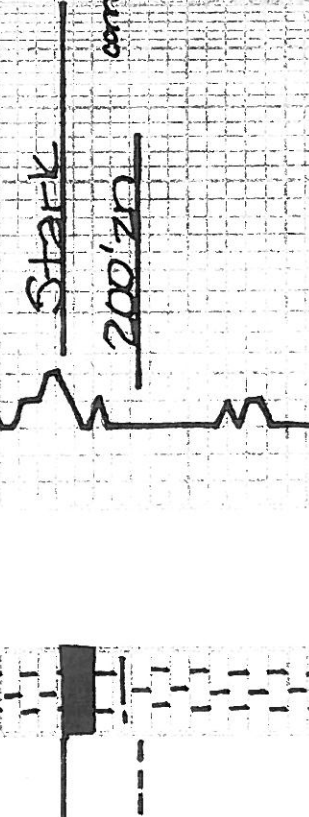
DST # 3:  
 1 stop: Wk Blow  
 No Blowback  
 2nd op: Wk Blow;  
 Dild BS.  
 No Blowback  
 Rec:  
 1' Clean Oil  
 99' Water  
 100' Total Flu

LS, arg. tan. fn. xln. pr.  
 vis. φ dense blk. NSNO  
 sh, blk. carbonaceous  
 LS, arg. tan. fn. xln. pr. vis. φ  
 dense NSNO  
 LS, AA  
 sh, v. dk. gry.  
 LS, arg. tan. fn. xln. few pebb  
 sil.ool. overall dense  
 pr. vis. φ NSNO  
 LS, arg. tan. fn. xln. pr.  
 vis. φ dense NSNO sc  
 pos. gry. Δ  
 LS, arg. tan. fn. xln. 1-2 pebb. coc  
 overall dense NSNO sc  
 tan. Δ  
 LS, arg. tan. fn. xln. sil.  
 fossil. pr. vis. φ dense  
 NSNO  
 sh, gry. green, maroon  
 LS, arg. tan. fn. xln. pr. vis. φ  
 NSNO sc. arg. tan. Δ  
 sh. arg. tan. maroon



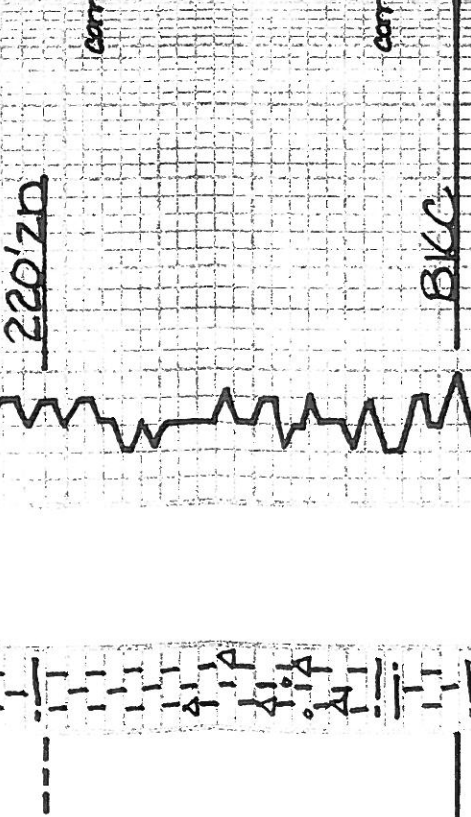
EL 3016 (-1278)  
 1FP: 29-41#/30"  
 ISIP: 1081#/60"  
 FFP: 45-71#/90"  
 FSIP: 1081#/90"  
 Chlor: 65,000 pp

sh, blk. carbonaceous  
 LS, arg. tan. fn. xln. pr. vis. φ  
 dense NSNO  
 LS, AA  
 sh, v. dk. gry.  
 LS, arg. tan. fn. xln. few pebb  
 sil.ool. overall dense  
 pr. vis. φ NSNO  
 LS, arg. tan. fn. xln. pr.  
 vis. φ dense NSNO sc  
 pos. gry. Δ  
 LS, arg. tan. fn. xln. 1-2 pebb. coc  
 overall dense NSNO sc  
 tan. Δ  
 LS, arg. tan. fn. xln. sil.  
 fossil. pr. vis. φ dense  
 NSNO  
 sh, gry. green, maroon  
 LS, arg. tan. fn. xln. pr. vis. φ  
 NSNO sc. arg. tan. Δ  
 sh. arg. tan. maroon



EL 3090 (-135)

sh, blk. carbonaceous  
 LS, arg. tan. fn. xln. pr. vis. φ  
 dense NSNO  
 LS, AA  
 sh, v. dk. gry.  
 LS, arg. tan. fn. xln. few pebb  
 sil.ool. overall dense  
 pr. vis. φ NSNO  
 LS, arg. tan. fn. xln. pr.  
 vis. φ dense NSNO sc  
 pos. gry. Δ  
 LS, arg. tan. fn. xln. 1-2 pebb. coc  
 overall dense NSNO sc  
 tan. Δ  
 LS, arg. tan. fn. xln. sil.  
 fossil. pr. vis. φ dense  
 NSNO  
 sh, gry. green, maroon  
 LS, arg. tan. fn. xln. pr. vis. φ  
 NSNO sc. arg. tan. Δ  
 sh. arg. tan. maroon







DEPTH	CORRECTION TIME MINUTES/FOOT	SAMPLE DESCRIPTIONS	REMARKS

Company: Trans Pacific Oil Corp. ELEVATION: KB 1738

Case: Katzenmeier 'A' # 1-2

Location: NE NE NE SEC. 2 T. 16 S. R. 9 W

County: Ellsworth STATE: Kansas