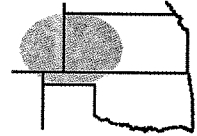


Pro-Stake LLC
 Oil Field & Construction Site Staking
 P.O. Box 2324
 Garden City, Kansas 67846
 Office/Fax: (620) 276-6159
 Cell: (620) 272-1499



q112211-n
 PLAT NO.

9702
 INVOICE NO.

Stelbar Oil Corporation, Inc.
 OPERATOR

Cheyenne #1-26
 LEASE NAME

Stanton County, KS
 COUNTY

26 30s 41w
 Sec. Twp. Rng.

335' FSL - 2050' FEL
 LOCATION SPOT

SCALE: **1" = 1000'**

DATE STAKED: **Nov. 22nd, 2011**

MEASURED BY: **Luke R.**

DRAWN BY: **Luke R.**

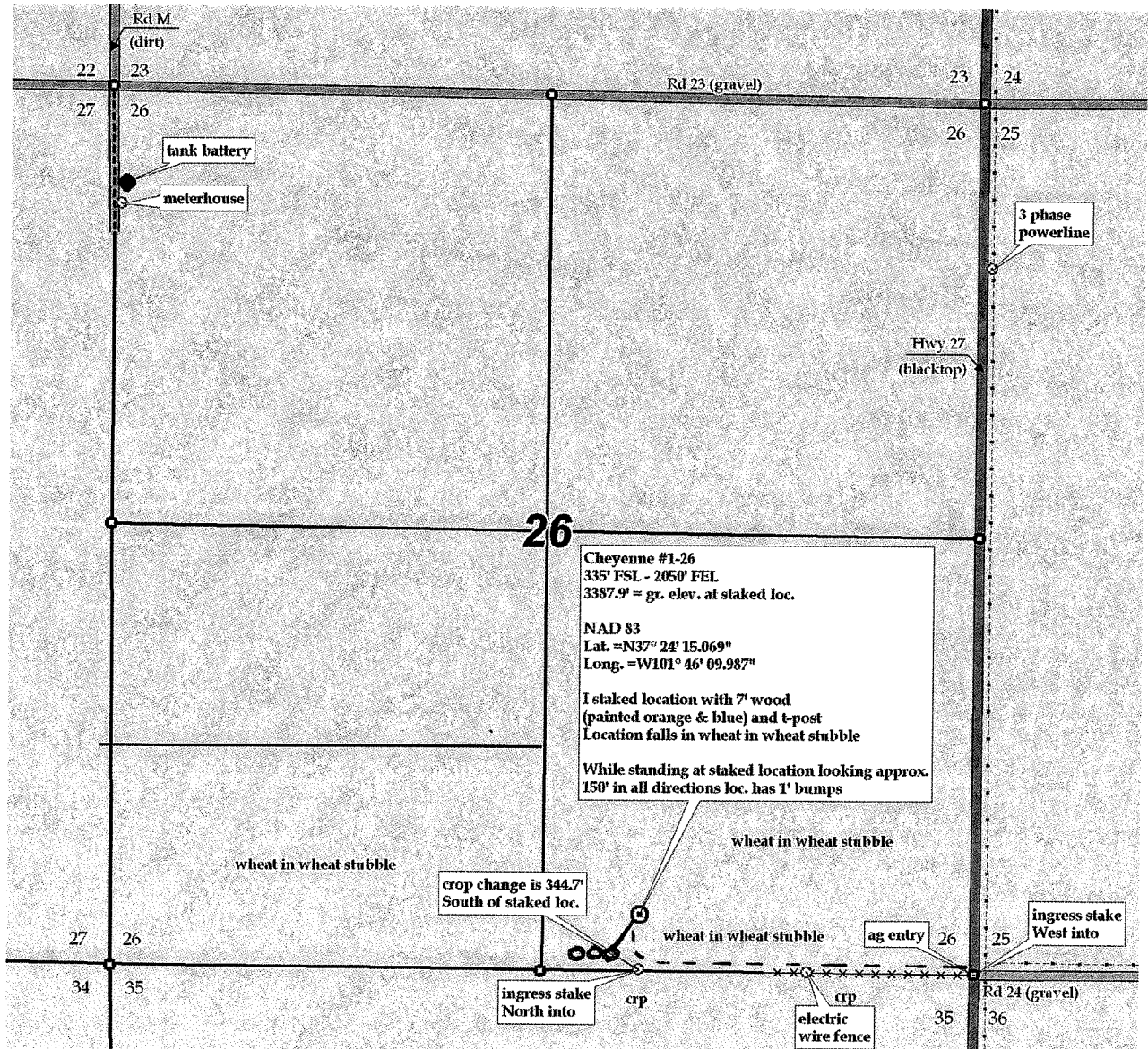
AUTHORIZED BY: **Roscoe M.**

GR. ELEVATION: **3387.9'**



Directions: From the SW corner of Johnson City at the intersection of Hwy 160 West & Hwy 27 - Now go 11 miles South on Hwy 27 to the SE corner of section 26-30s-41w & ingress stake West into - Now go approx. 2000' West through wheat in wheat stubble to ingress stake North into - Now go 335' North through wheat in wheat stubble into staked location.
 Final ingress must be verified with land owner or Operator.

This drawing does not constitute a monumented survey or a land survey plat. This drawing is for construction purposes only.



Tanks = 000
 Lines = ---
 Road = ---