



Woolsey Operating Company, LLC

Scale 1:240 (5"=100') Imperial

Measured Depth Log

Well Name: LOGAN 10-X
Location: Aprox NE SE SW
License Number: API: 15-007-23742-00-00
Spud Date: August 1, 2011
Surface Coordinates: 990' FSL & 2385' FWL Section 18-Twp 34 South - Rge 11 West
Rhodes South Field
Bottom Hole Coordinates: Vertical Hole
Ground Elevation (ft): 1416
Logged Interval (ft): 4000 To: RTD
Formation: McLish Shale
Type of Drilling Fluid: Chemical Mud, Displace at 3400'

Region: Barber County, Kansas

Drilling Completed: August 9, 2011

K.B. Elevation (ft): 1425

Total Depth (ft): 5220

Printed by WellSight Log Viewer from WellSight Systems 1-800-447-1534 www.WellSight.com

OPERATOR

Company: Woolsey Operating Company, LLC
Address: 125 N. Market, Suite 1000
Wichita, KS 67202

GEOLOGIST

Name: W. Scott Alberg
Company: Alberg Petroleum, LLC
Address: 609 Meadowlark Lane
Pratt, Kansas 67124

FORMATION TOPS

	SAMPLE TOPS	LOG TOPS
STARK SHALE	4395(-2970)	4394(-2969)
HUSHPUCKNEY SHALE	4426(-3001)	4426(-3001)
B/KC	4482(-3057)	4480(-3055)
PAWNEE	4566(-3141)	4566(-3141)
CHEROKEE GROUP	4616(-3191)	4616(-3191)
CHEROKEE SAND	4634(-3209)	4631(-3206)
MISSISSIPPIAN	4645(-3220)	4542(-3217)
KINDERHOOK SHALE	4874(-3449)	4879(-3454)
WOODFORD SHALE	4958(-3533)	4959(-3534)
MAQUOKETA	4992(-3575)	4992(-3575)
VIOLA	5012(-3587)	5007(-3582)
SIMPSON SHALE	5113(-3688)	5114(-3689)
SIMPSON SAND	5134(-3709)	5132(-3707)
MCLISH SHALE	5172(-3747)	5169(-3744)
RTD	5220(-3795)	
LTD		5222(-3797)

COMMENTS

Surface Casing: Set 5 joints 10 3/4" at 223' with 240 sxs Class A, 2% gel, 3% cc, plug down at 9:45 pm on August 1, 2011. Cement did Circulate.

Production Casing: Ran 5 1/2" Casing.

Deviation Surveys: 1- 225', 3/4 - 1229', 1 - 1700, 3/4 - 2201', 3/4 - 2700', 1/2 - 3202', 1 - 3673', 3/4 - 3929', 1 - 4014', 1 - 4114', 1/2 - 4808', 3/4 5096'.

Contractor Bit Record:

1- 14 3/4" out at 225'.

2- 7 7/8" out at 5096'.

3- 7 7/8" out at 5220'.

Gas Detector: Woolsey Operating Company, Trailer #1

Mud System: Mud Co, Brad Bortz, Engineer

DSTs: No DST's Taken

Logged by Superior Well Services.

LTD - 5222'

DSTs

No DST's Taken on this test well.

CREWS

H2 Drilling Rig #3

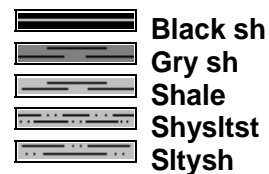
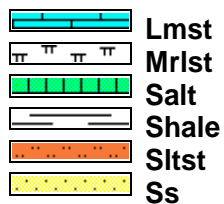
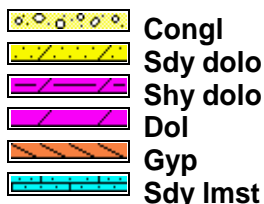
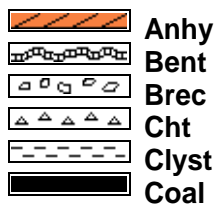
Tool Pusher - Randy Smith

Drillers - Gary Axtell

Luis Marquez

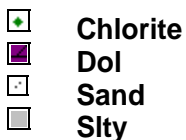
Cesor Regaldo

ROCK TYPES

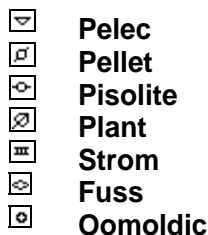
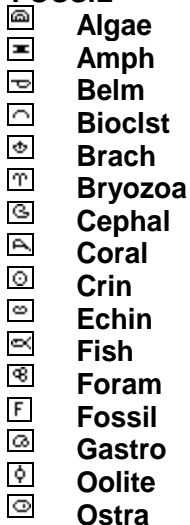


ACCESSORIES

MINERAL



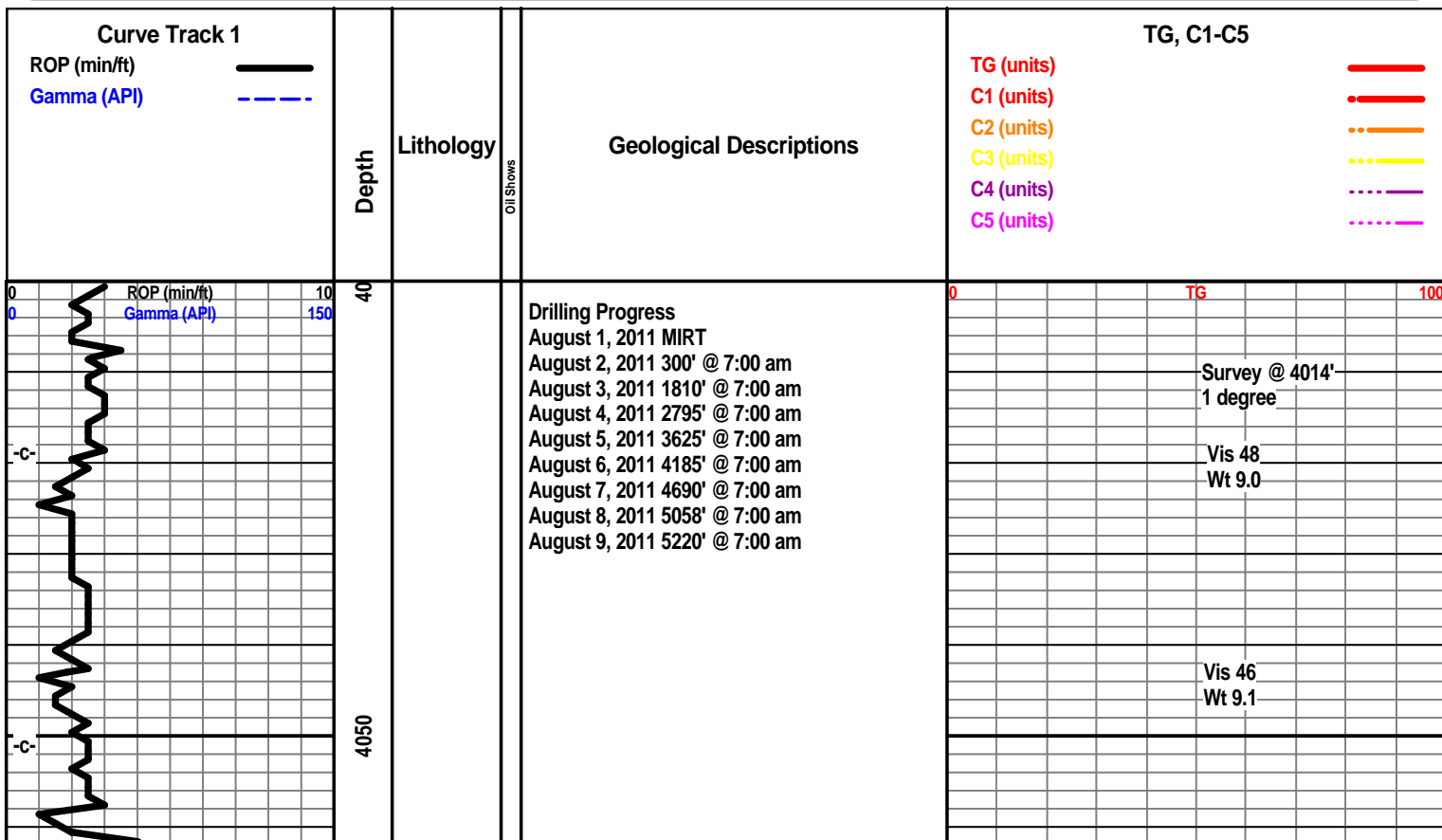
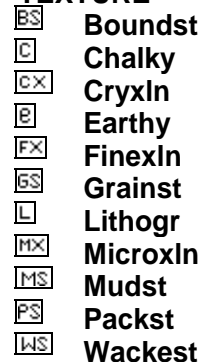
FOSSIL

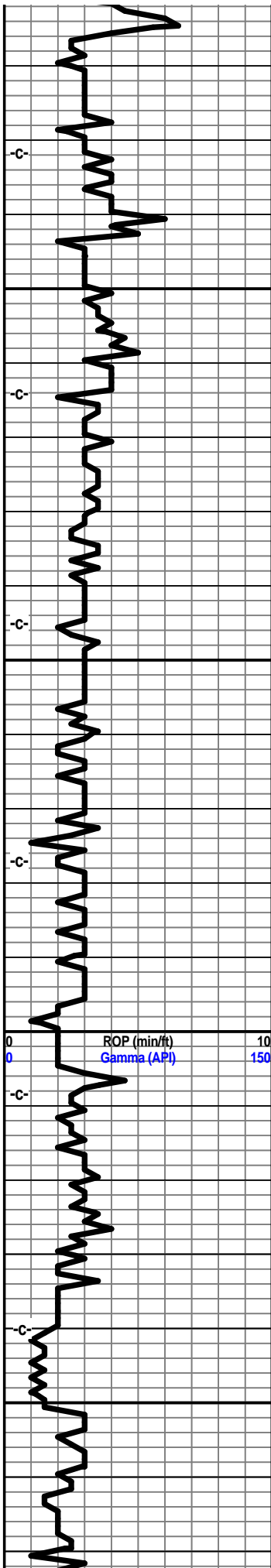


STRINGER



TEXTURE





4100

4150

4200

4250

Vis 46
Wt 9.2
LCM 3#

Vis 48
Wt 9.2
LCM 3#
Survey @ 4114'
1 degree

Vis 48
Wt 9.2
LCM 3#

Vis 50
Wt 9/0
LCM 2#

August 6, 2011
4185' @ 7:00 am

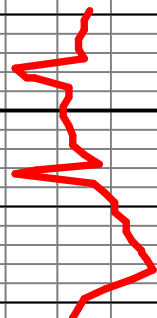
Vis 49
Wt 9.2
LCM 2#

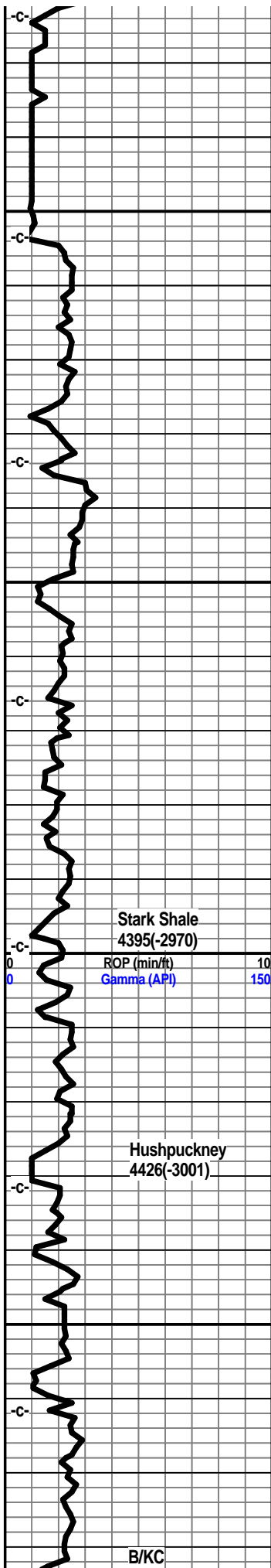
KB 1425'

Geologist on
Location
4230' @ 8:30 am
August 6, 2011

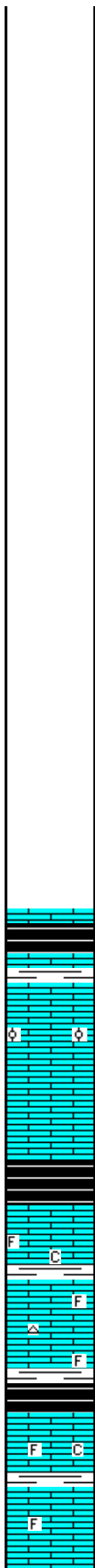
Survey at 4240'
1/2 degree

Start Gas Detector





4300
4350
4400
4450



Shale, grey-black, carb

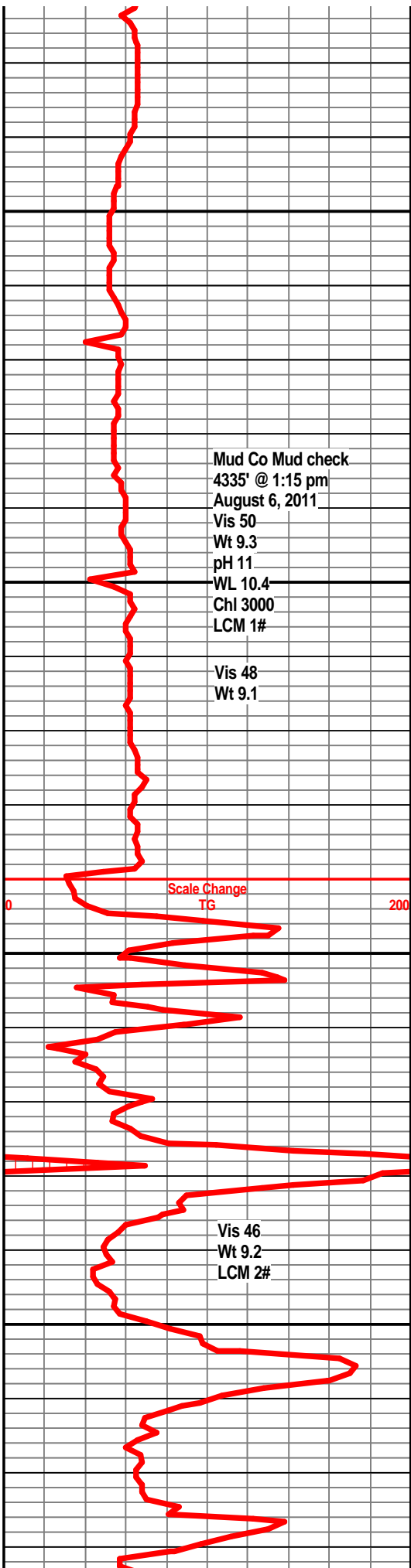
Limestone, tan-white, xln, oolitic, some fossil frags, cast porosity, slight show of oil & gas, scattered fluor, slight odor, trace of bleeding gas.

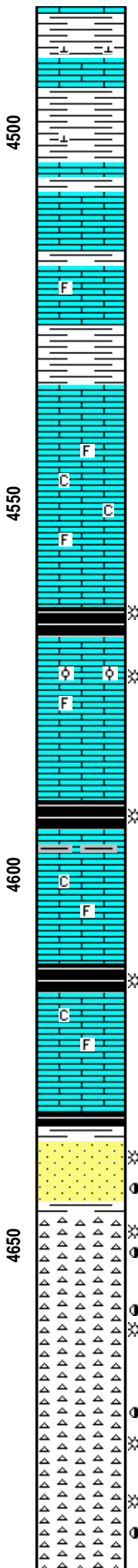
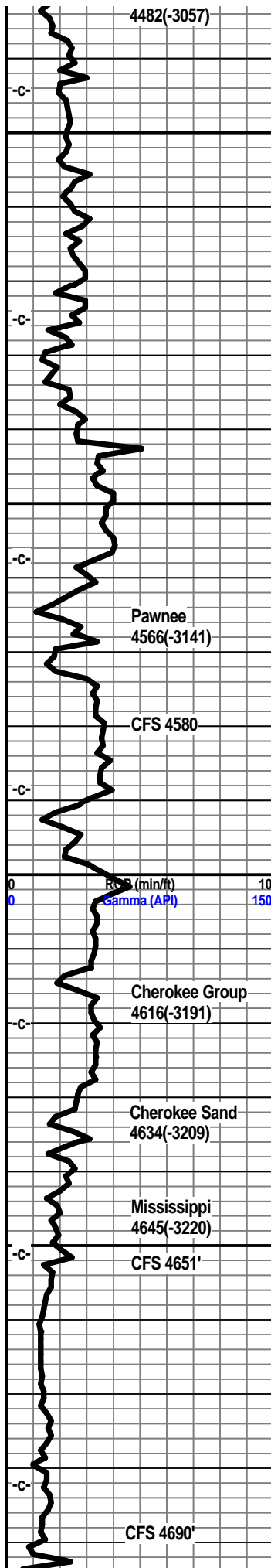
Shale, grey-black, carb.

Limestone, grey-white, buff, xln, foss, subchalky in part, some grey shales, no visible shows.
Limestone, a/a, trace of grey chert.

Shale, grey-black, carb.

Limestone, buff, grey, xln, dense, chalky, slightly foss.
Shale, grey.
Limestone, grey-white, xln, slightly mottled, chalky in part, trace foss., trace xln porosity, ??? odor, possible slight light brown staining, no visible above gas blk??





NO visible shows, gas kick??

Shale, grey-green, slightly calcitic.

Limestone, grey-green, shaley.

Shale, grey, green.

Limestone, tan-brown, xln, trace xln porosity, ?? odor, no vis shows, scattered min fluor.

Limestone, tan, buff-white, xln, sub-chalky, slightly foss.

Shale, grey-green.

Limestone, buff-white, tan, xln, dense, slightly foss, traces chalky.

Shale, grey-black, carb.

Limestone, tan-white, fxln, sub-chlaky, fine oolites, fossils, some small cast porosity, rare show gas bubble, slight golden stain, fair even fluor.

Shale, grey-black, carb.

Limestone, grey, tan-white, xln, dense, slightly chalky in part, trace of foss, no visible shows.

Shale, grey-black, carb.

Limestone, grey-white, tan, xln, dense, sub-chalky, no visible shows.

Shale, grey-black, trace grey-green.

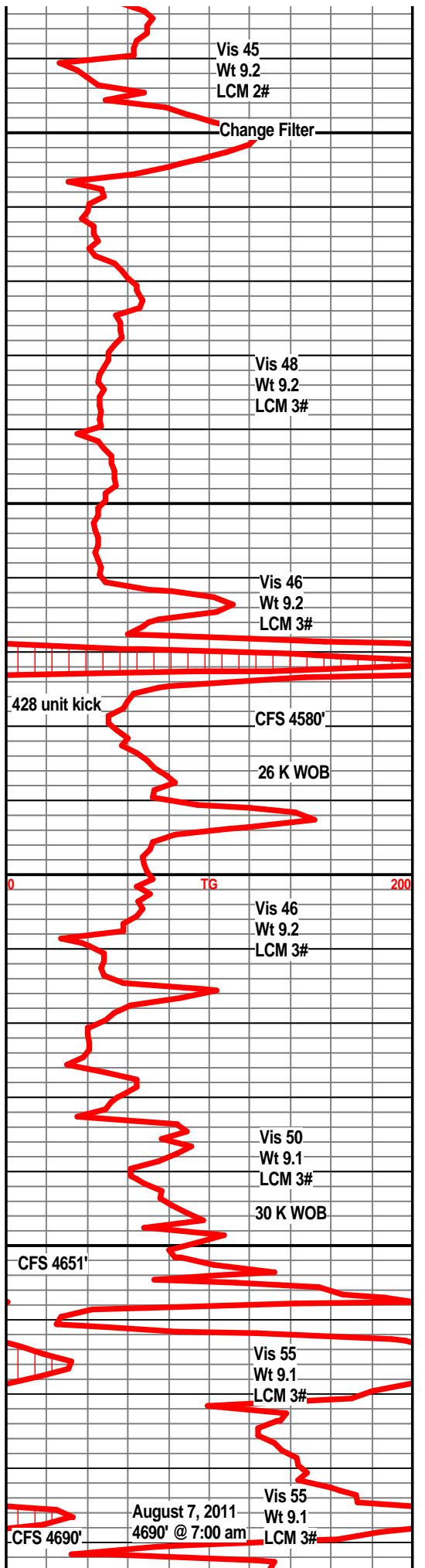
Sandstone, tan, tan-lt brown, dark brown-black, v fn grained, well sorted, friable, some well cemented, fair odor, even golden brown staining, slight show light oil, trace of bleeding gas, spotty dull fluor.

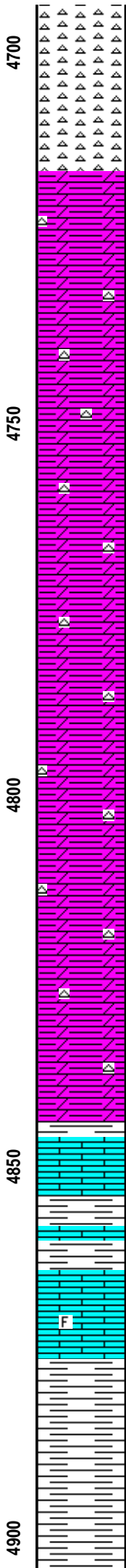
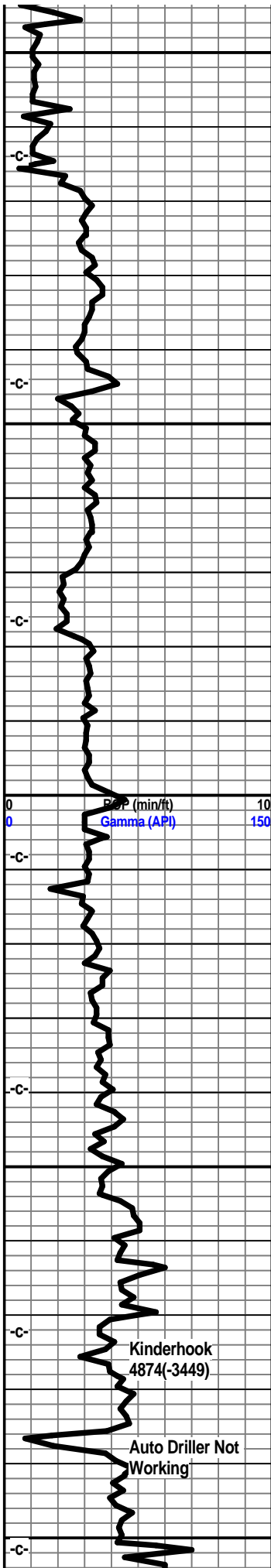
Chert, (in 60" sample), off-white to tan-white, sharp, fresh, some weathered with spotty stain, fair odor(from sand?), trace show of oil, dull fluor.

Chert, white, off-white, tan, sharp to weathered, pp porosity, small scattered vugs, spotty brown staining, good odor, show of free oil & gas, spotty fluor, some grey shales.

Chert, off-white, tan, weathered, pp porosity, small vugs, good odor, good show free oil and bleeding gas, some grey green shales, spotty fluor.

Chert, off-white to tan, weathered, pp porosity, fair brown staining, good odor, increasing amounts of grey-green shales, trace grey dolo.





4700 Chert, off-white, tan, trans, some sharp, mostly weathered, spotty brown staining, fair odor, fair show of oil & gas, dull fluor, some grey-green shales.

Dolo, greywhite, xln, dense, weathered cherts with light staining, slight spotty show oil, p-f odor, abundeant grey-grey dolo shales.

Dolo, light grey, xln, some fresh cherts, grey-green shales, few fossil frags.

Dolo, grey-white, tan, xln, slightly limey, glauc., weathered cherts, spotty staining, faint show of oil, faint odor, abundant grey-green shales.

Dolo, grey-white, xln, dense, some weathered cherts, spotty staining, fresh, sharp, grey-green shales.

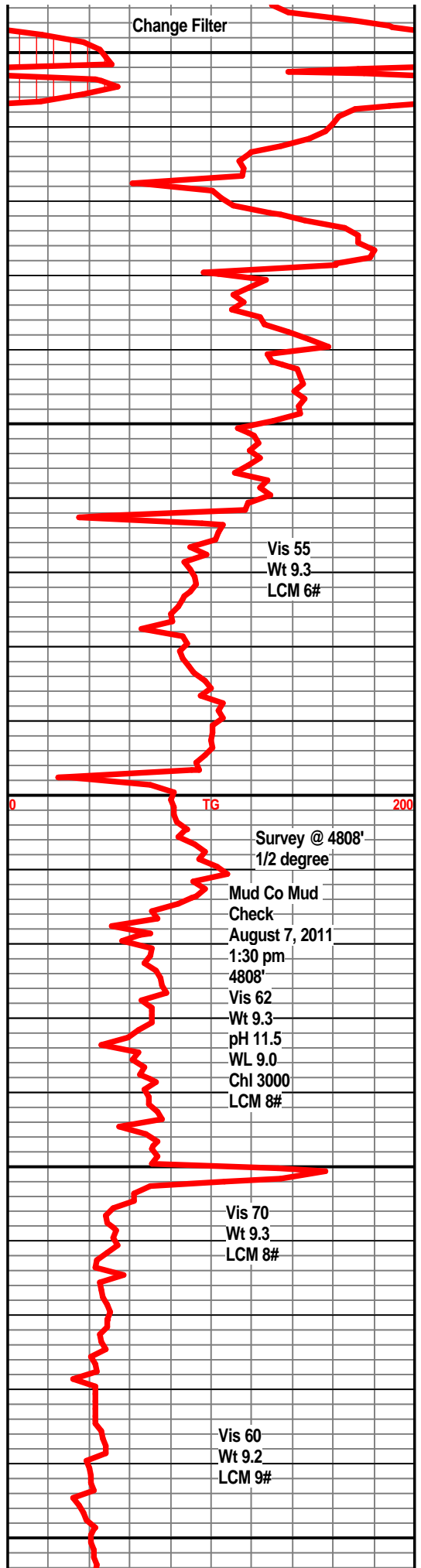
Dolo, grey-white, xln, dense, glauc., cherty, still carrying slight shows in cherts, grey-green shales.

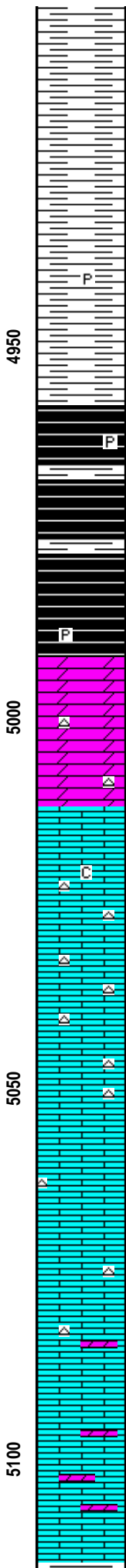
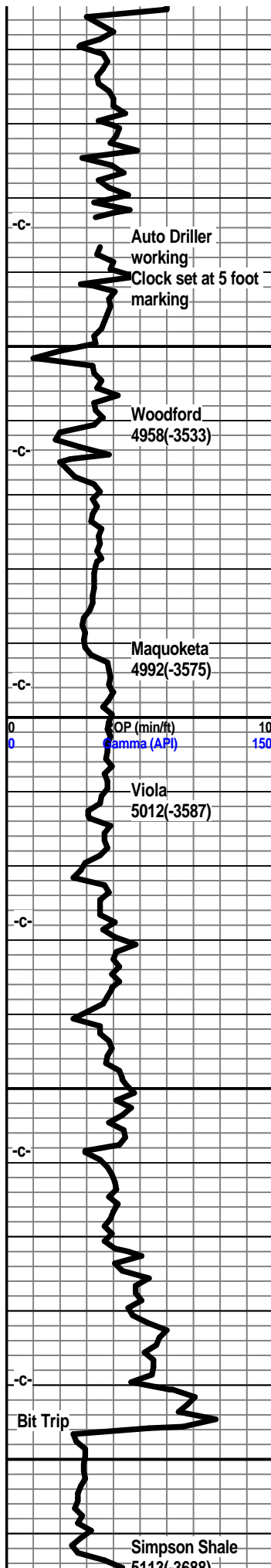
Dolo, grey-white, tan, xln, dense, decreasing cherts, grey-green shales.

Limestone, cream-white, tan, xln, slightly foss, trace of chert, possible gas indication, no visible shows found.
Shale, light green, calcitic, some grey-black carb shale.

Limestone, cream-white, tan, fxln, dense, slightly chalky, trace of foss.

Shale, grey, dark green, splintery.





Shale, dark grey, green, firm, splintery.

Shale, dark grey, dark green, firm.

Shale, dark grey, traces of pyrite.

Shale, grey-black, some coffee brown, carb.

Shale, grey-black, coffee brown, carb., traces of brown sand imbedded in shale towards base.

Dolo, light grey-white, fxln, soft, traces of white to off-white dolo, traces of white chert.

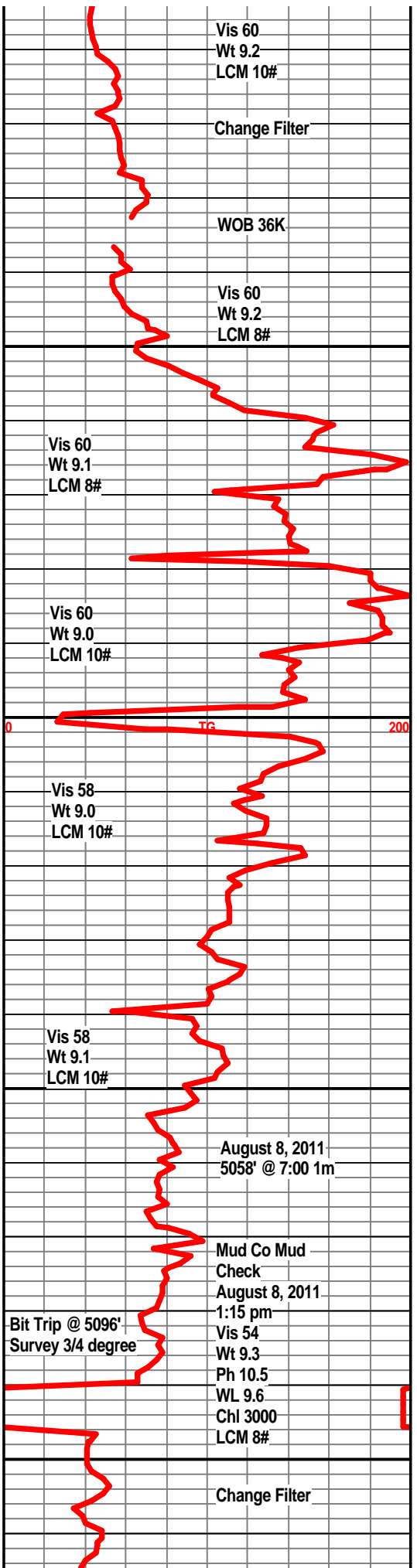
Limestone, cream to off-white, xln, trace of xln porosity, pp porosity, slight show of oil under uv light, subchalky in part, traces of white chert, no odor, possible increase in gas background.

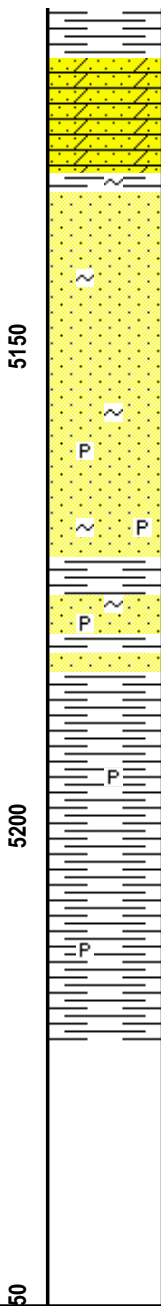
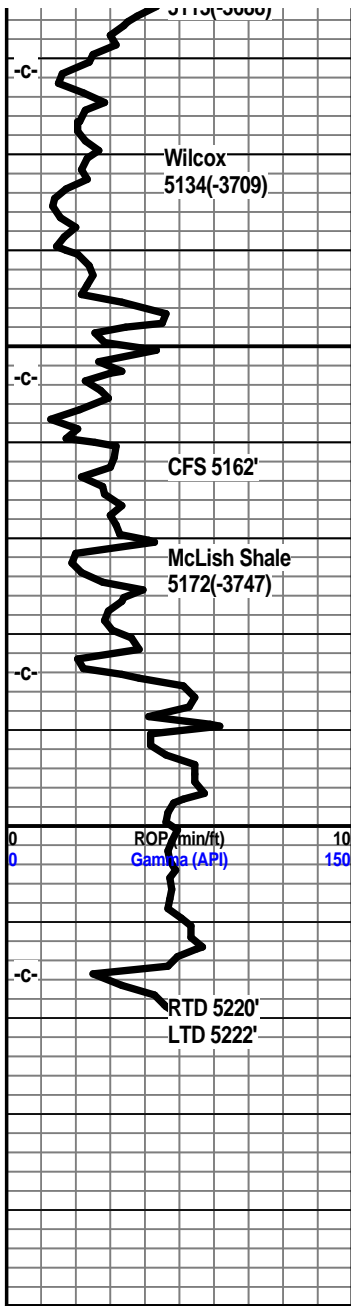
Limestone, tan-white, off-white, xln, some xln porosity, traces of tan-white specked cherts, trace chalky ls, dull scatered flour, no odor.

Limestone, tan-white, xln, dense, tan cherts, succ. texture, sub chalky in part.

Limestone, tan-white, xln succ, granular, tan sharp cherts, slightly dolo in part.

Limestone, tan, granular, xln, slightly dolo, sandy in part, tan sharp cherts. (poor samples, abundant uphole cavings)





Shale, teal green, firm, slightly sandy in part.

Sandstone, grey-white, SA, well cemented, some friable, p-f sorting, races of pyrite imbedded, trace glauc. no visible shows.

Sandstone, grey-white, frosted white, SA to SR, fair sorting friable in part, slight show of light oil, ??? odor, glauc, slightly dolo in part., slight scattered fluor.

Sandstone, grey-white, white, some tan, slight show light oil, some light brown staining, friable to well cemented, glauc.

Sandstone, grey-white to clear-white, SA to SR, fair sorting, friable in part, some well cemented, slight show oil, dull scattered fluor, ??? odor, some teal green shales.

Sandstone, a/a, decreasing shows in samples, no odor, dull spotty fluor in few samples.

Sandstone, clear to frosted white, SA to SR, fair sorting, friable in part, some well cemented, few shale inclusions, traces of pyrite, glauc.

Shale, teal green, firm, traces of pyrite, some scattered sand clusters.

Shale, teal green, firm.

