

MACCLIN B. ARISTOMAS
 Geologist
 316-205-0001
 Kansas License Number 743

COMPANY MULL DRILLING COMPANY
W-S UNIT NO. 1-17
FIELD WILD CAT
COUNTY NESS
STATE KANSAS

Location: 1005 FNL 4 223 FWL
 SEC 17 T16S R22W
 CORNER W. P.E.
 WELL SERVICES
 WILD CAT
 MW DRILLING RIG 6
 8-29-11
 4550

Drilling Time: 3700-TD
 Drilling Start: 8:51 AM at 214'
 Drilling Stop: 8:30 AM at 4550'
 Drilling Rate: 14.4# at 4550'

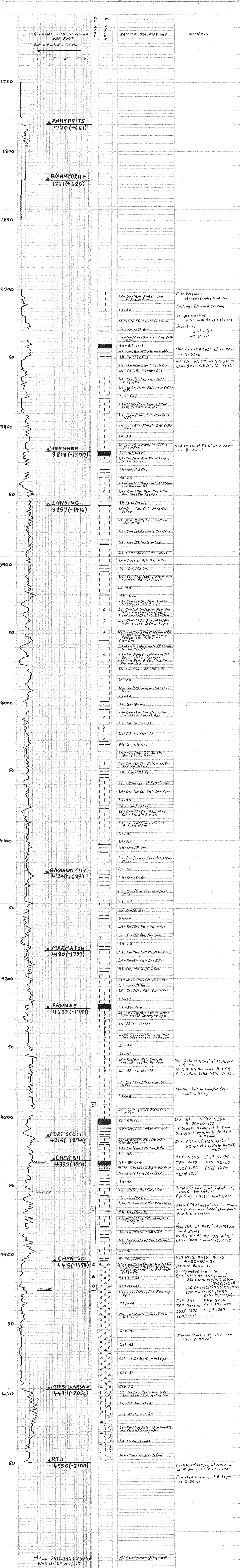
Date	Time	Rate	Depth
8-23-11	11:00	5.0	1780
8-24-11	10:00	3.8	1821
8-25-11	2:44	3.8	3818
8-26-11	3:55	4.1	4124
8-27-11	4:15	4.1	4180
8-28-11	4:36	4.2	4222
8-29-11	4:50	4.3	4315
8-30-11	4:50	4.5	4497
			4550

REMARKS: PIPE WAS SET TO FURTHER TEST THE CHEROKEE SAND ZONE.
 Respectfully Submitted,
 Wanda M. Remington

Bit Record	Bit	Depth In	Depth Out	Hours
7 3/4 P217	PT 3827	14-14-14	215	4550
				96 1/2

Formation	Sample	Log	Depth
ANHYDRITE	1780	1778	+663
B/ANHYDRITE	1821	1818	+623
HEEBNER	3818	3816	-1375
LANSING	3857	3856	-1416
B/KANSAS CITY	4124	4122	-1681
MARMATON	4180	4180	0
PAWNEE	4222	4220	-1779
FORT SCOTT	4315	4315	-1874
CHEROKEE SHALE	4332	4331	-1890
CHEROKEE SAND	4405	4405	-1964
MISS-WARSAW	4497	4497	-2056
TOTAL DEPTH	4550	4551	-2110

Structural Position to: MULL DRILLING COMPANY
 WIEMAN'S NO. 1-17 1021' FSL 4401' FWL SEC 17 T16S R22W



MULL DRILLING COMPANY
 W-S UNIT NO. 1-17
 1005 FNL 4 223 FWL
 Sec 17 T16S R22W
 NESS COUNTY, KS

ELEVATION: 2441.88
 Finished Drilling at 10:12 am on 8-29-11
 Finished Logging at 5:30 pm on 8-29-11