

Company	MULL DRILLING COMPANY
Well	BACKSTROM NO. 1-29
Field	WILDCAT
County	NESS
State	KANSAS
Location	964' FSL & 1744' FEL
Section	29
Range	16S
Township	22W
Corner	SE 5 1/4
Drilling Time	3700-TD
Drilling Rate	77
Depth	4550
Production	5 1/2" 17 1/2" at 450'
Drilling Time	3700-TD
Drilling Rate	77
Depth	4550
Production	5 1/2" 17 1/2" at 450'

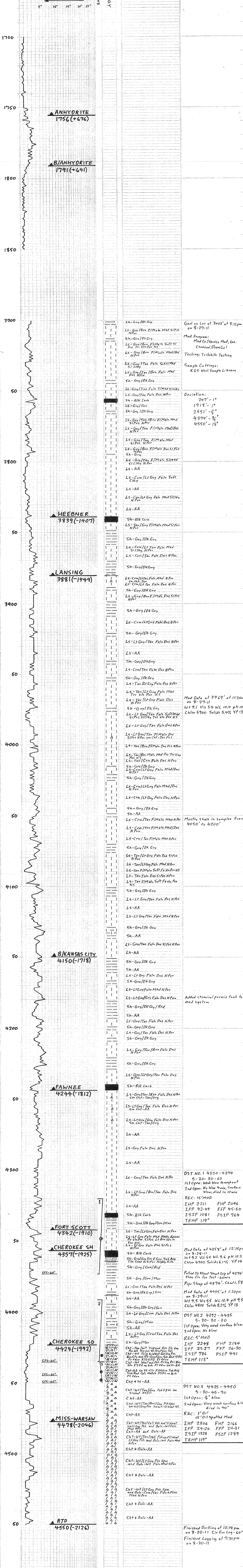
Drilling Time	3700-TD
Drilling Rate	77
Depth	4550
Production	5 1/2" 17 1/2" at 450'

Remarks	PIPE WAS SET TO FURTHER TEST THE CHEROKEE SAND ZONE.
Respectfully Submitted,	Maddie M. Ramsey

Bit Record	17 1/2" X 20" QX20 H06272 17-14-14 246 4550 97
------------	--

Formation	Sample	Log	Datum	+	-
ANHYDRITE	1756	1754	+678	+10	
B/ANHYDRITE	1791	1788	+644	+13	
HEEBNER	3839	3838	-1406	+7	
LANSING	3881	3880	-1448	+5	
B/KANSAS CITY	4150	4147	-1718	+12	
PAWNEE	4244	4243	-1811	+14	
FORT SCOTT	4342	4342	-1910	+15	
CHEROKEE SHALE	4357	4356	-1926	+18	
CHEROKEE SAND	4424	4424	-1992	+20	
MISS-WARSAW	4478	4477	-2045	+8	
TOTAL DEPTH	4550	4551	-2119		

Structural Position to	NADEL & GUSSMAN
MUSSELMAN NO. 1	C NE NW SEC 29 T16 S R22W



MULL DRILLING COMPANY
 BACKSTROM NO. 1-29
 964' FSL & 1744' FEL
 Sec 29 T16S R22W
 NESS COUNTY, KS

ELEVATION: 2432K8