



**TRILOBITE  
TESTING, INC.**

# DRILL STEM TEST REPORT

Dow ning-Nelson Oil Co Inc

**6-21s-20w Pawnee**

P O Box 372  
Hays Ks 67601-0372

**Tombaugh-Vand #1-6**

ATTN: Ron Nelson

Job Ticket: 44770

**DST#: 2**

Test Start: 2011.11.07 @ 18:10:31

## GENERAL INFORMATION:

Formation: **Miss**

Deviated: No Whipstock: ft (KB)

Time Tool Opened: 20:19:56

Time Test Ended: 01:17:55

Test Type: Conventional Bottom Hole (Reset)

Tester: Ray Schwager

Unit No: 42

**Interval: 4362.00 ft (KB) To 4374.00 ft (KB) (TVD)**

Reference Elevations: 2220.00 ft (KB)

Total Depth: 4374.00 ft (KB) (TVD)

2212.00 ft (CF)

Hole Diameter: 7.85 inches Hole Condition: Fair

KB to GR/CF: 8.00 ft

**Serial #: 6625 Inside**

Press @ Run Depth: 61.36 psig @ 4366.00 ft (KB)

Capacity: 8000.00 psig

Start Date: 2011.11.07

End Date:

2011.11.08

Last Calib.:

2011.11.08

Start Time: 18:10:31

End Time:

01:17:55

Time On Btm:

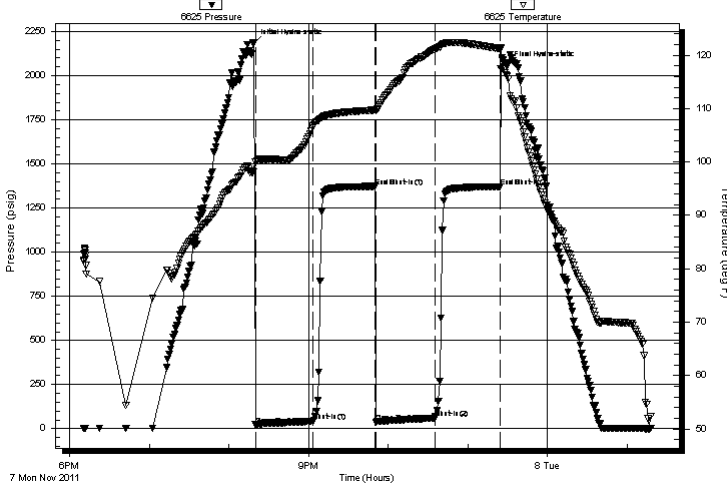
2011.11.07 @ 20:18:26

Time Off Btm:

2011.11.07 @ 23:29:25

**TEST COMMENT:** 45-IFP-w k to a fr bl 1/2"to 4"bl  
45-ISIP-no bl  
45-FFP-w k to a fr bl 1"to 6"bl  
45-FSIP-no bl 1st 20min, then surface bl bk

Pressure vs. Time



## PRESSURE SUMMARY

Time (Min.)	Pressure (psig)	Temp (deg F)	Annotation
0	2180.39	98.22	Initial Hydro-static
2	22.21	99.95	Open To Flow (1)
45	41.38	106.69	Shut-In(1)
92	1372.89	109.75	End Shut-In(1)
93	37.86	109.72	Open To Flow (2)
137	61.36	121.17	Shut-In(2)
186	1371.30	121.22	End Shut-In(2)
191	2057.25	116.17	Final Hydro-static

## Recovery

Length (ft)	Description	Volume (bbl)
60.00	MGO 10%G10%M80%O	0.57
55.00	CO	0.77
0.00	250'GIP	0.00

## Gas Rates

	Choke (inches)	Pressure (psig)	Gas Rate (Mcf/d)

\* Recovery from multiple tests



**TRILOBITE  
TESTING, INC.**

# DRILL STEM TEST REPORT

**FLUID SUMMARY**

Dow ning-Nelson Oil Co Inc

**6-21s-20w Pawnee**

P O Box 372  
Hays Ks 67601-0372

**Tombaugh-Vand #1-6**

Job Ticket: 44770      **DST#: 2**

ATTN: Ron Nelson

Test Start: 2011.11.07 @ 18:10:31

## Mud and Cushion Information

Mud Type: Gel Chem	Cushion Type:	Oil API: 34 deg API
Mud Weight: 9.00 lb/gal	Cushion Length: ft	Water Salinity: ppm
Viscosity: 63.00 sec/qt	Cushion Volume: bbl	
Water Loss: 7.93 in <sup>3</sup>	Gas Cushion Type:	
Resistivity: ohm.m	Gas Cushion Pressure: psig	
Salinity: 6800.00 ppm		
Filter Cake: 1.00 inches		

## Recovery Information

Recovery Table

Length ft	Description	Volume bbl
60.00	MGO 10%G10%M80%O	0.568
55.00	CO	0.772
0.00	250'GIP	0.000

Total Length: 115.00 ft      Total Volume: 1.340 bbl

Num Fluid Samples: 0      Num Gas Bombs: 0      Serial #:

Laboratory Name:      Laboratory Location:

Recovery Comments:

# Pressure vs. Time

