

**SUPERIOR
Hays,
Kansas**

**RADIATION
GUARD LOG**

Company JASON OIL COMPANY, LLC.
Well DIETZ #1
Field HERMAN
County BARTON
State KANSAS

Company JASON OIL COMPANY, LLC.
Well DIETZ #1
Field HERMAN
County BARTON State KANSAS

Location: API #: 15-009-25628
330' FNL & 630' FWL
SEC 18 TWP 16S RGE 14W
Permanent Datum GROUND LEVEL Elevation 1913
Log Measured From KELLY BUSHING 5' A.G.L.
Drilling Measured From KELLY BUSHING
Other Services
Elevation
K.B. 1918
D.F.
G.L. 1913

Date	11-17-11
Run Number	ONE
Depth Driller	3480
Depth Logger	3479
Bottom Logged Interval	3478
Top Log Interval	00
Casing Driller	431
Casing Logger	429
Bit Size	7.875
Type Fluid in Hole	CHEMICAL MUD
Density / Viscosity	8.9 / 49
pH / Fluid Loss	9.5 / 10.4
Source of Sample	FLOWLINE
Rm @ Meas. Temp	0.45 @ 79F
Rmf @ Meas. Temp	0.34 @ 79F
Rmc @ Meas. Temp	0.54 @ 79F
Source of Rmf / Rmc	MEASURED
Rm @ BHT	.330 @ 109F
Time Circulation Stopped	2 HOURS
Time Logger on Bottom	12:45 A.M.
Maximum Recorded Temperature	109F
Equipment Number	860
Location	HAYS, KS.
Recorded By	RUPP
Witnessed By	JEFF LAWLER

<<< Fold Here >>>

All interpretations are opinions based on inferences from electrical or other measurements and we cannot and do not guarantee the accuracy or correctness of any interpretation, and we shall not, except in the case of gross or willful negligence on our part, be liable or responsible for any loss, costs, damages, or expenses incurred or sustained by anyone resulting from any interpretation made by any of our officers, agents or employees. These interpretations are also subject to our general terms and conditions set out in our current Price Schedule.

Comments

SUPERIOR WELL SERVICES
785-628-6395
THANK YOU FOR YOUR BUSINESS
DIRECTIONS: I-70 & BALTA RD., S TO C.L., E TO RD. #80, 2S, 1/8E, S INTO.

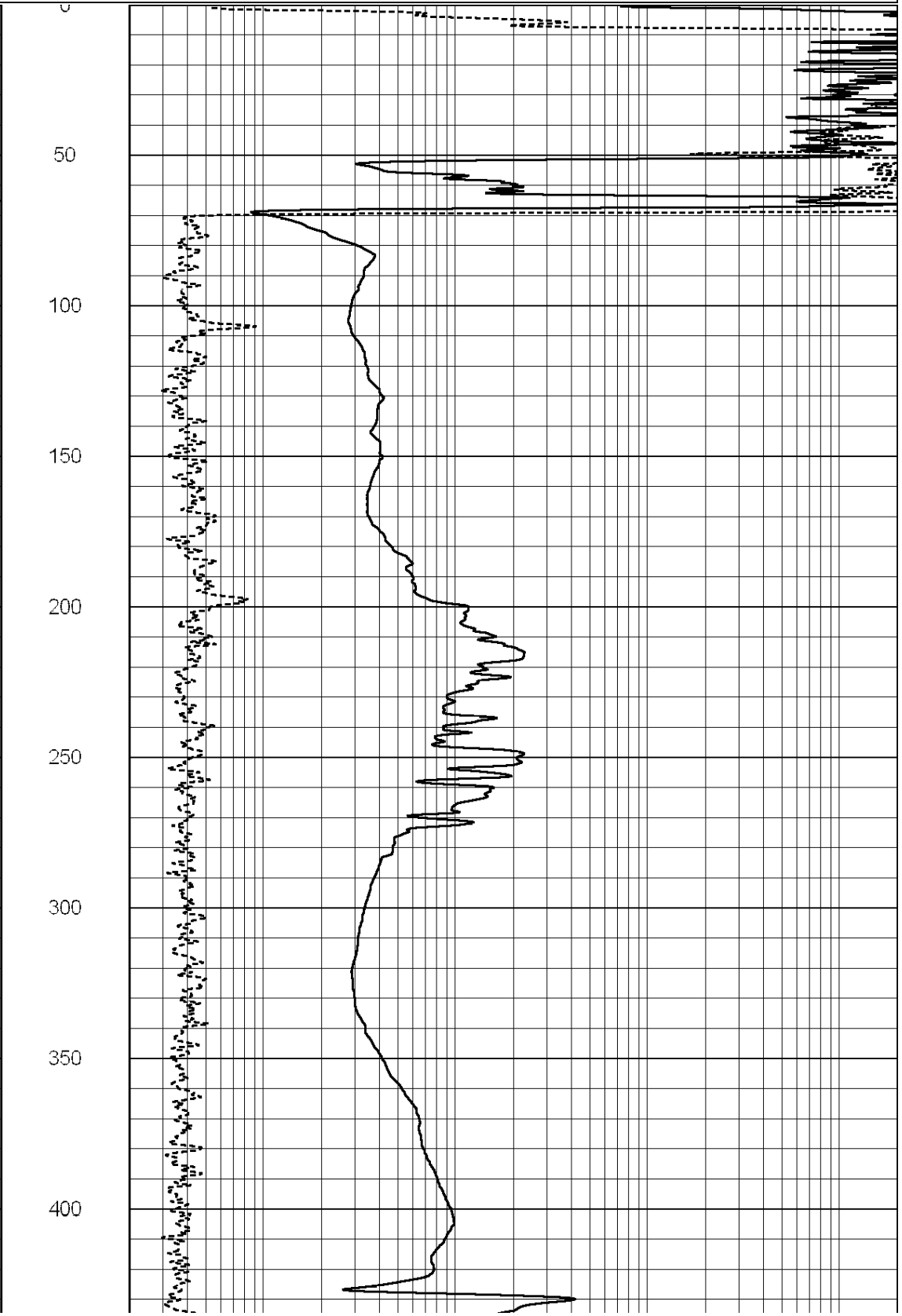
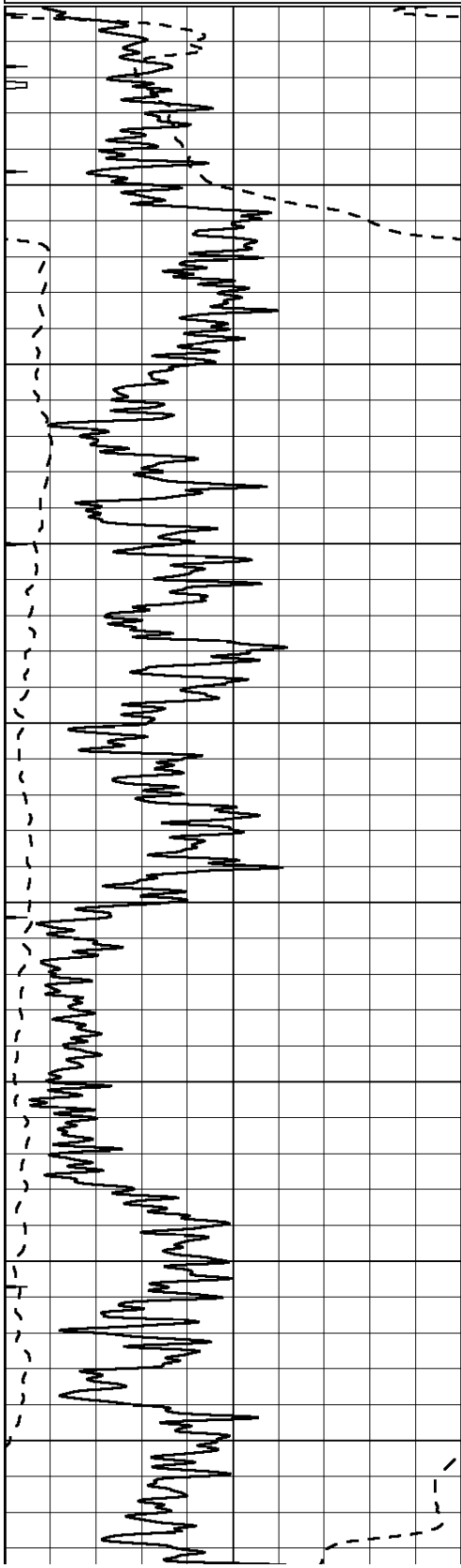


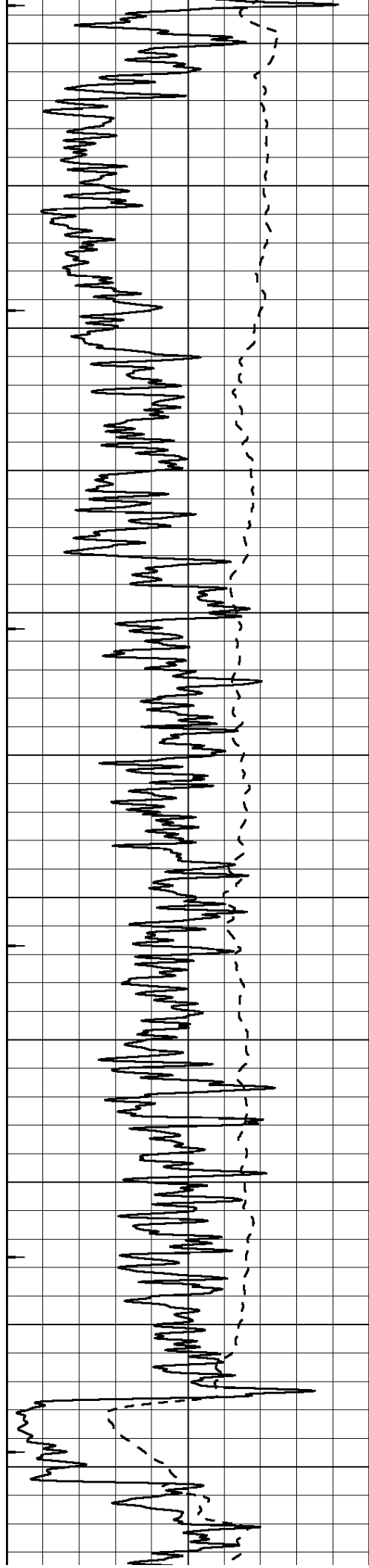
**SUPERIOR
Hays,
Kansas**

MAIN SECTION

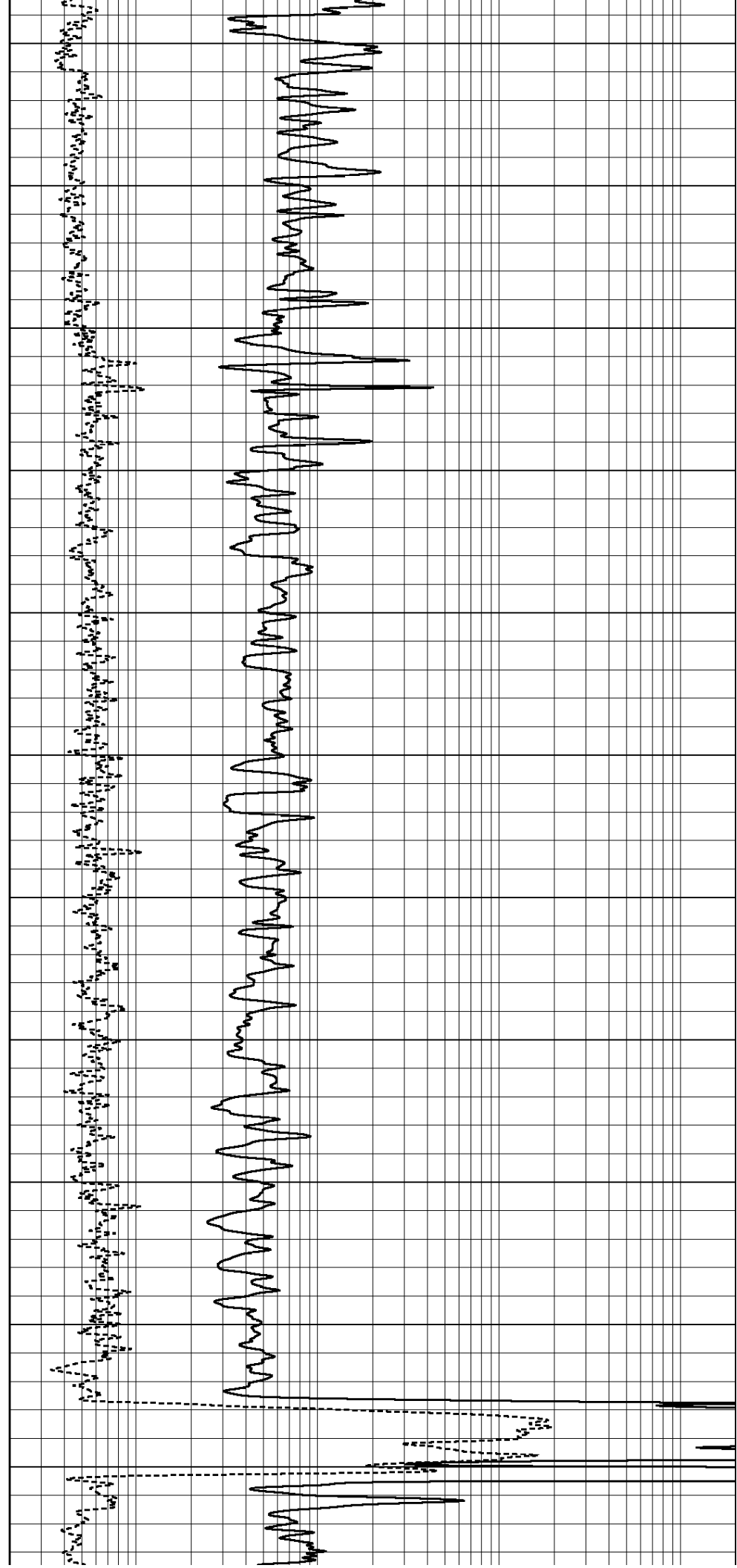
Database File: 008011rag.db
 Dataset Pathname: pass4A
 Presentation Format: rag2
 Dataset Creation: Thu Nov 17 02:07:21 2011
 Charted by: Depth in Feet scaled 1:600

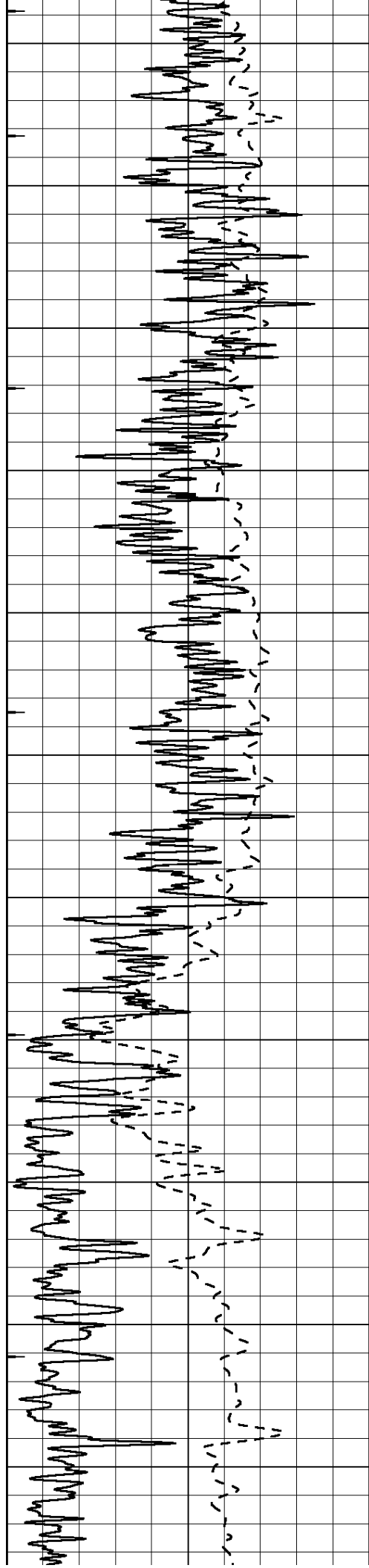
0	GAMMA RAY (GAPI)	150	ABHV (ft3)	0.2	GUARD (Ohm-m)	2000
-100	SP (mV)	100		0	NEUTRON (NAPI)	1000
-----			TBHV (ft3)	-----		





450
500
550
600
650
700
750
800
850
900
950





1000

1050

1100

1150

1200

1250

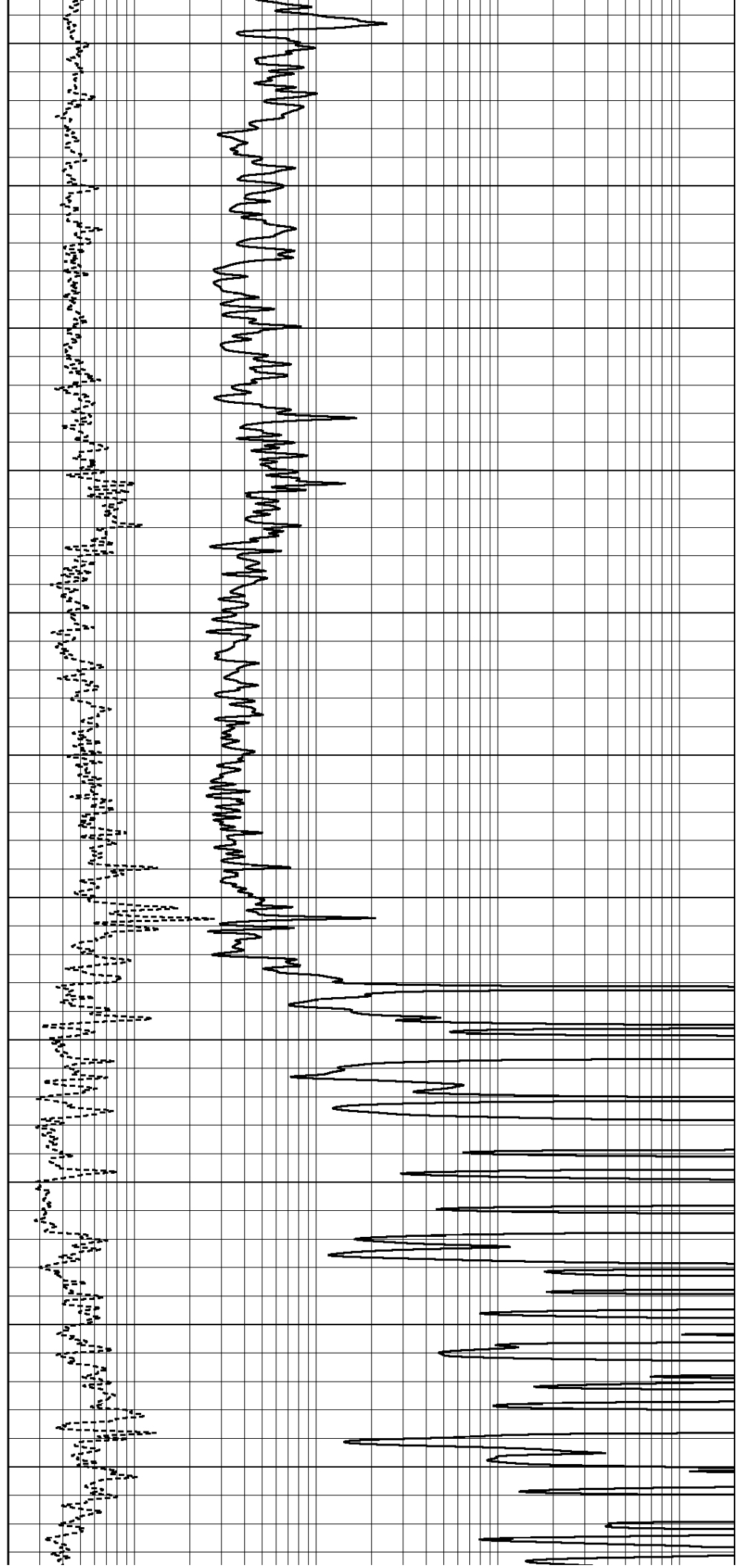
1300

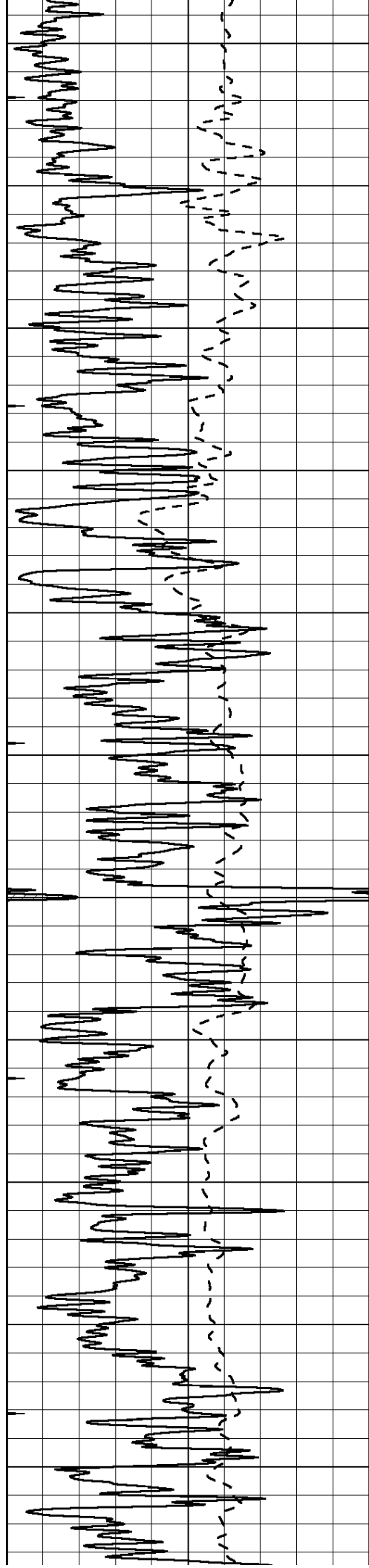
1350

1400

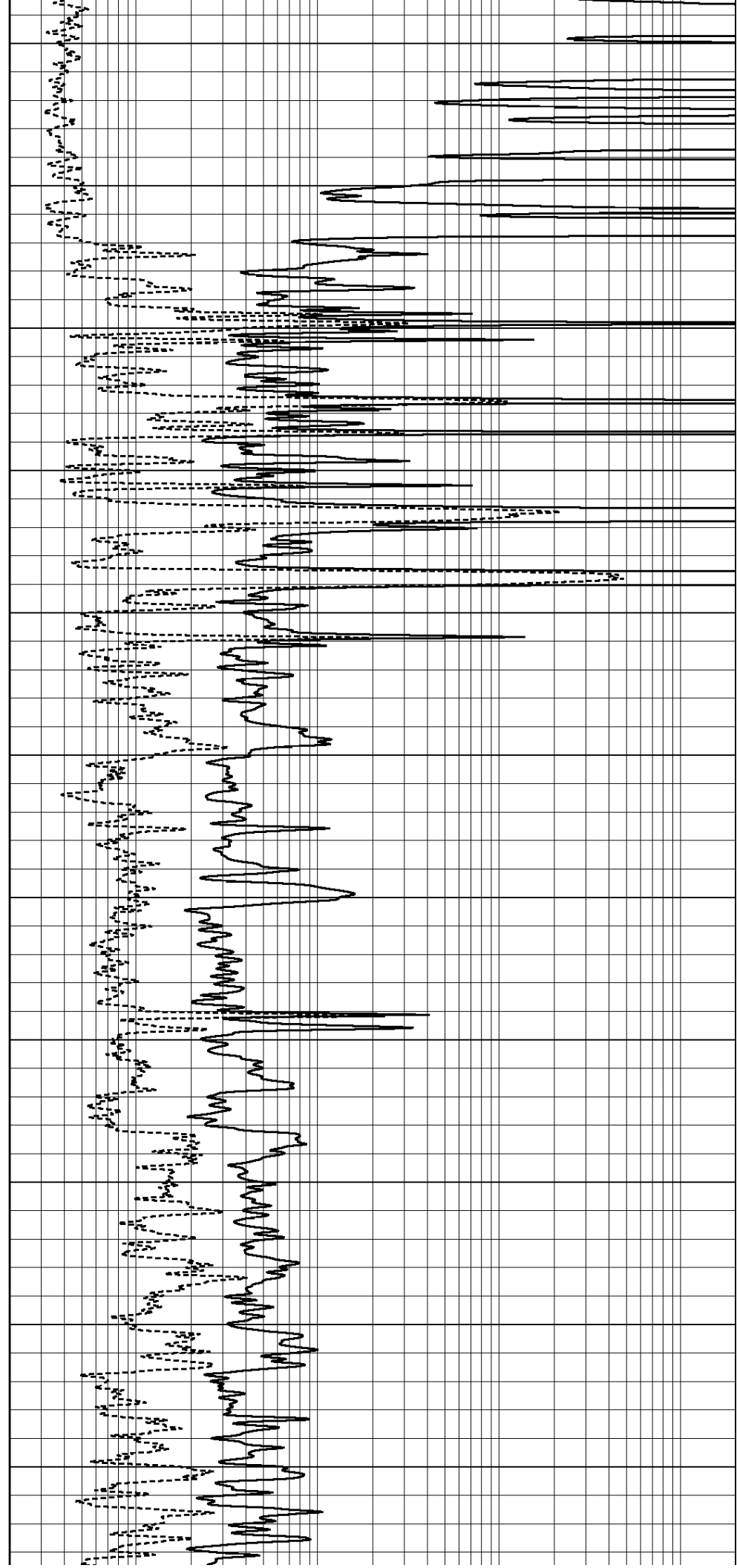
1450

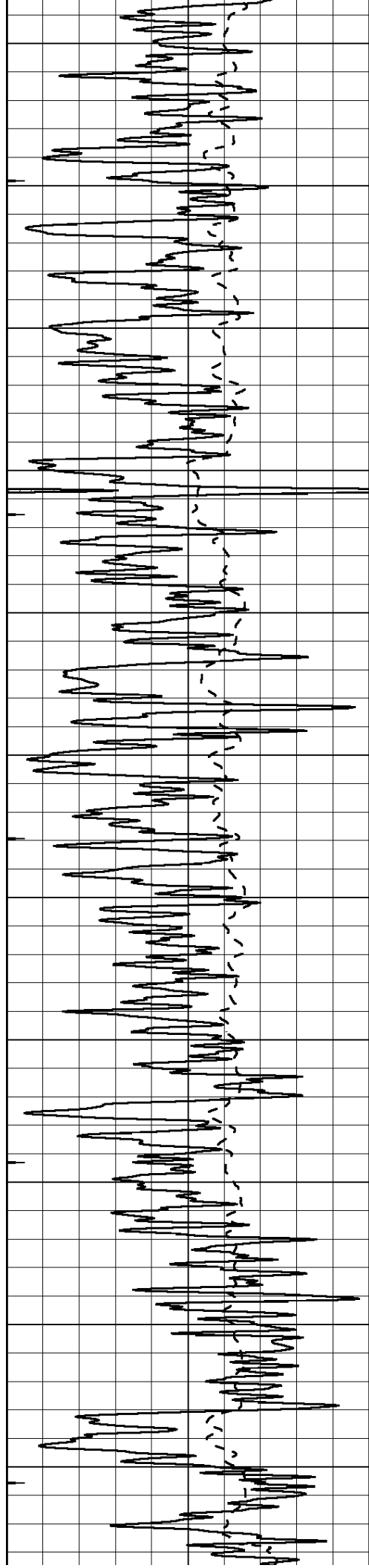
1500





1550
1600
1650
1700
1750
1800
1850
1900
1950
2000
2050





2100

2150

2200

2250

2300

2350

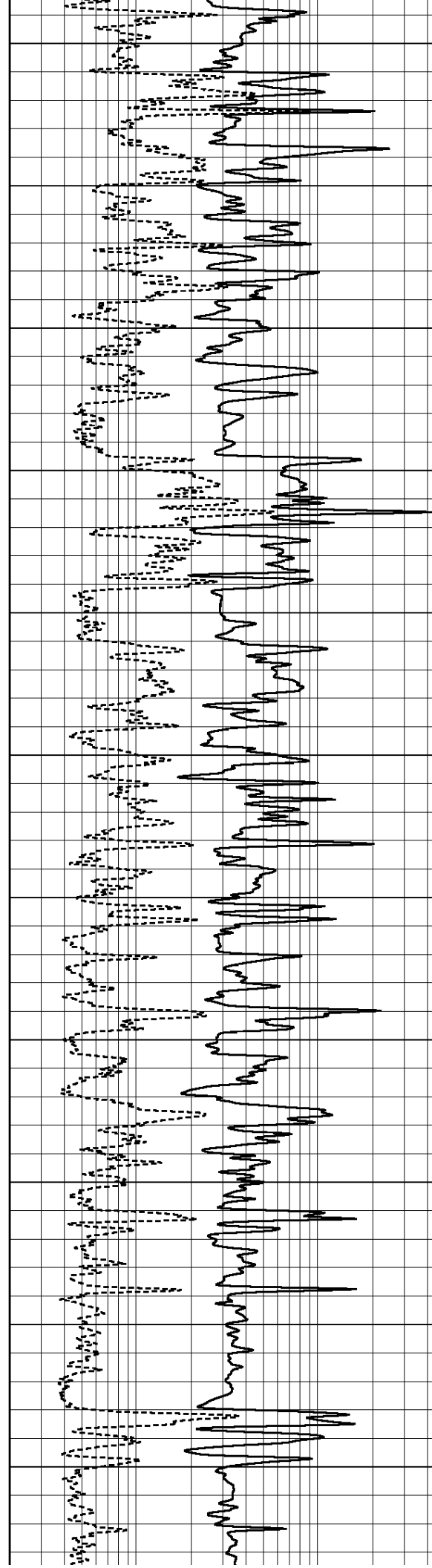
2400

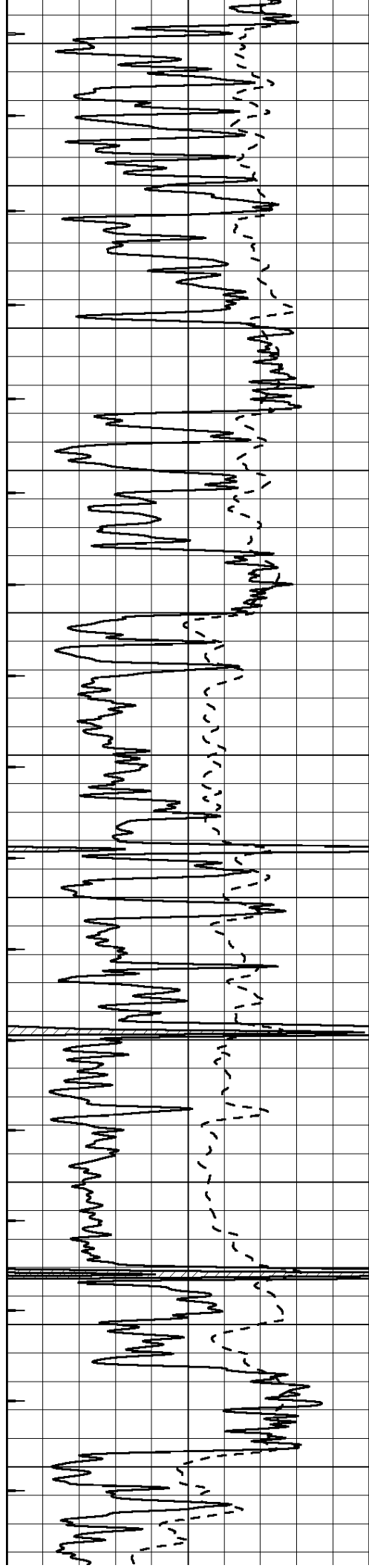
2450

2500

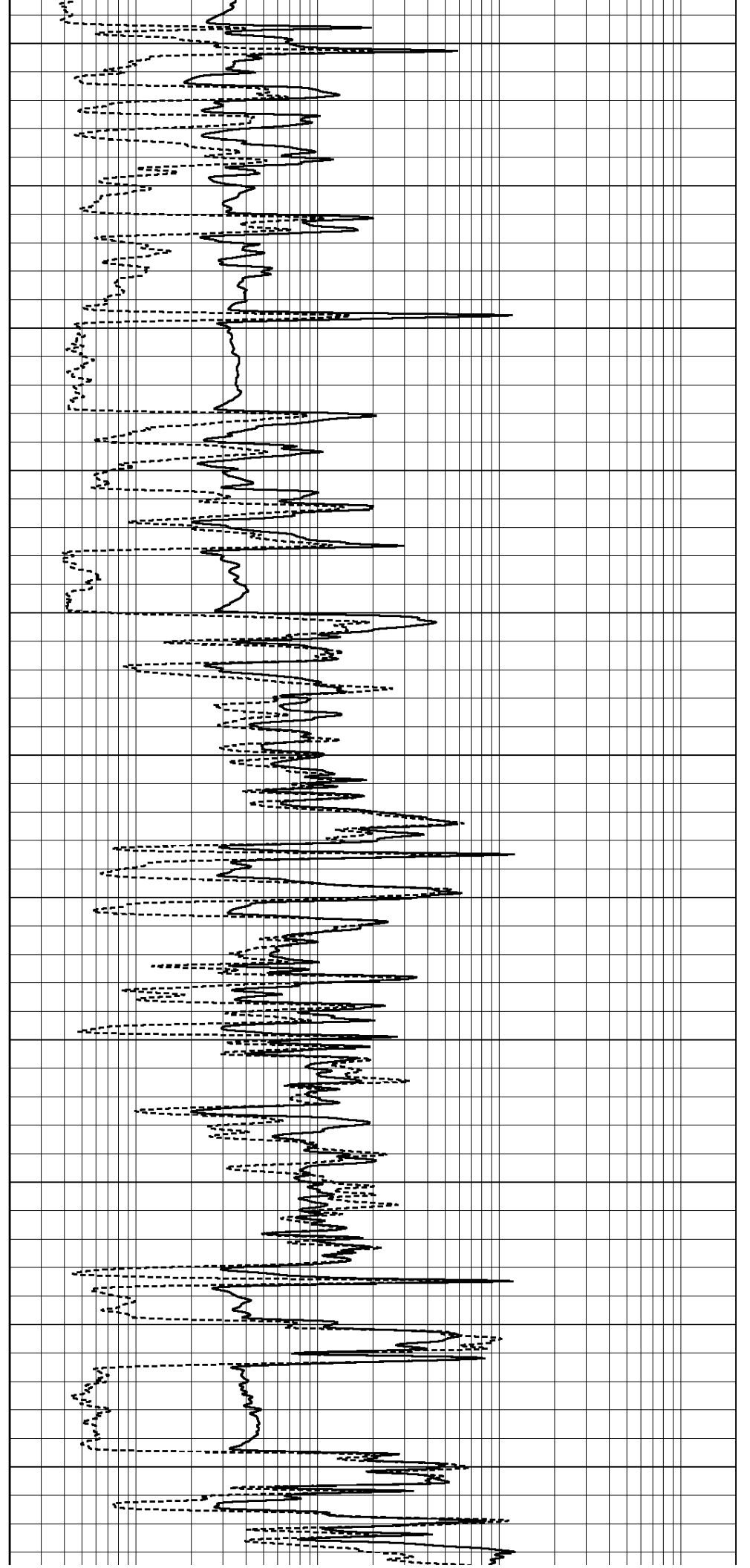
2550

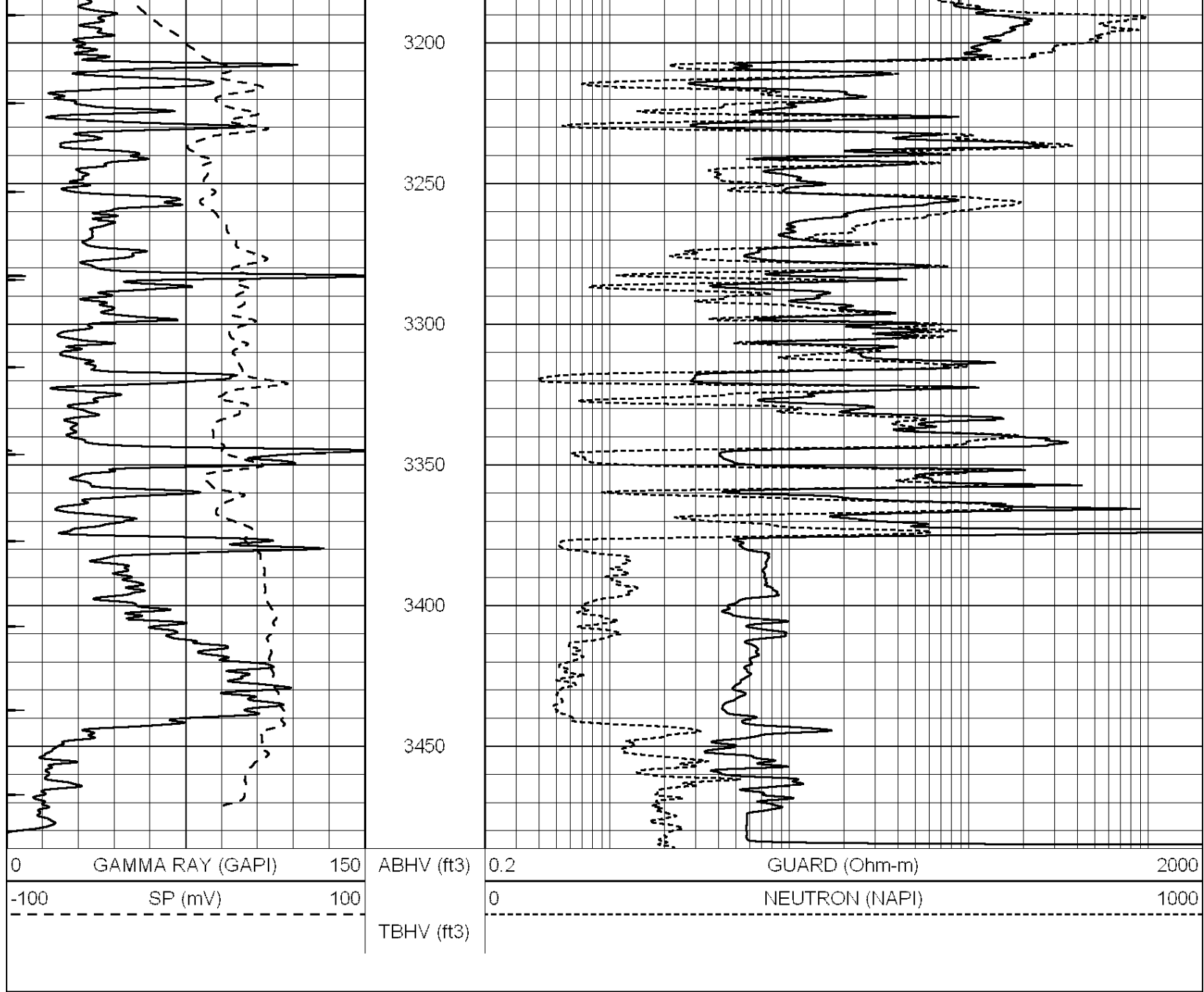
2600





2650
2700
2750
2800
2850
2900
2950
3000
3050
3100
3150

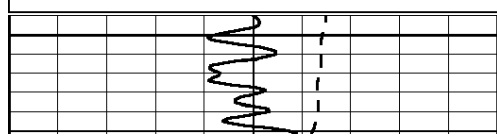
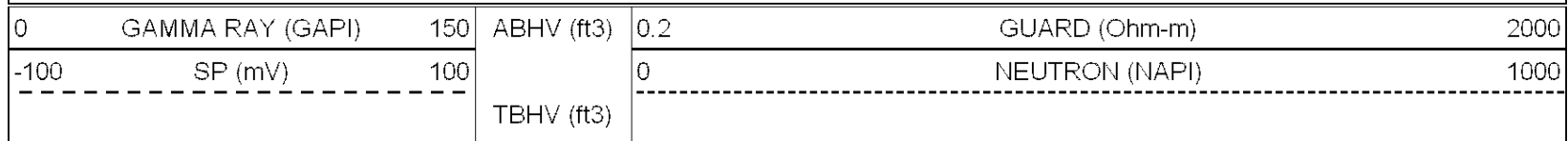




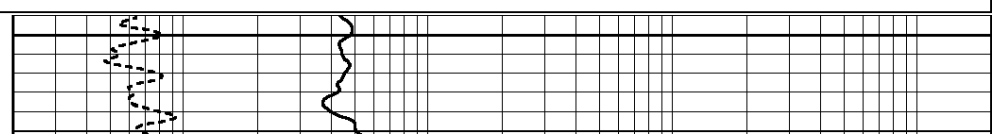
SUPERIOR
Hays,
Kansas

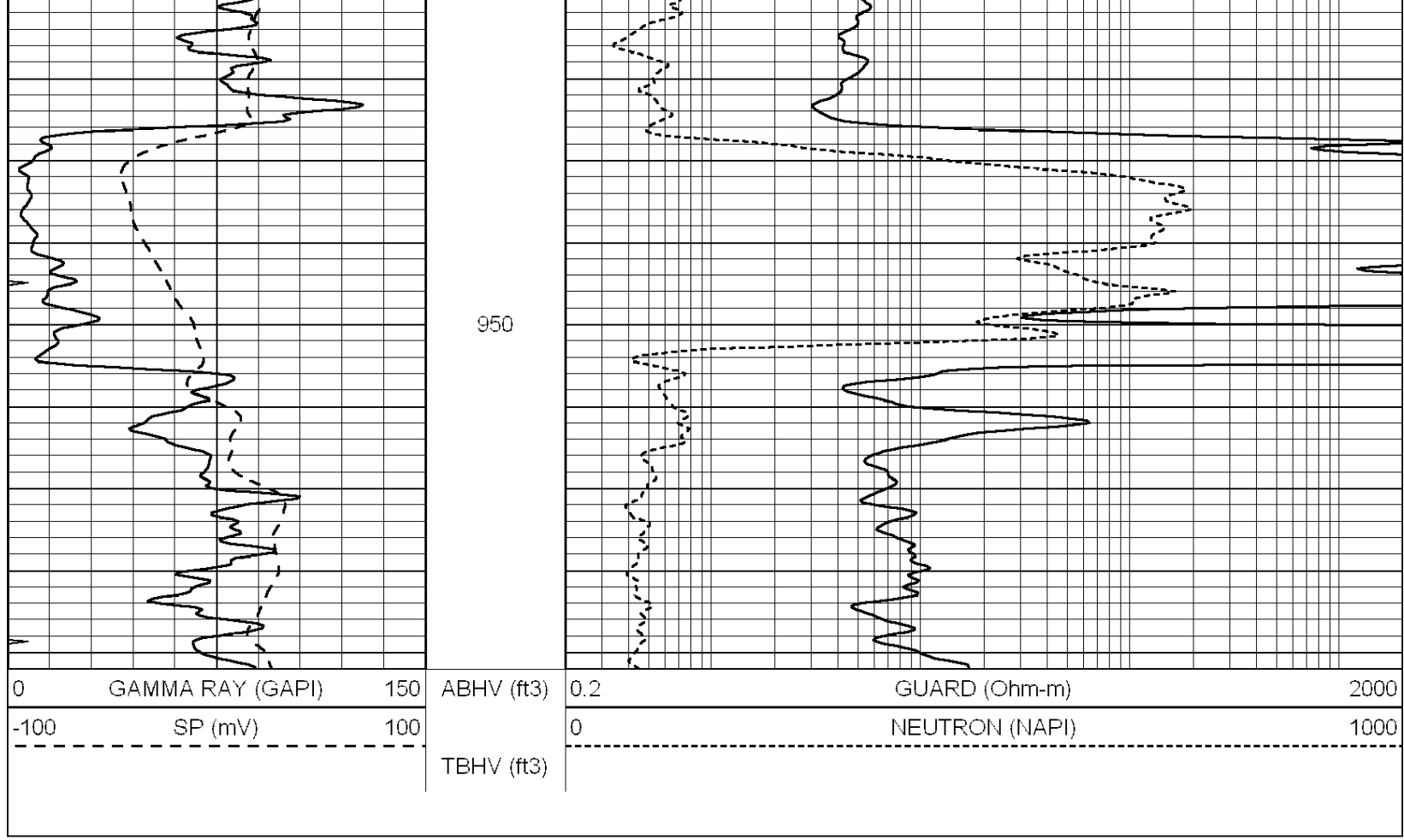
MAIN SECTION

Database File: 008011rag.db
 Dataset Pathname: pass4A
 Presentation Format: rag2
 Dataset Creation: Thu Nov 17 02:07:21 2011
 Charted by: Depth in Feet scaled 1:240



900

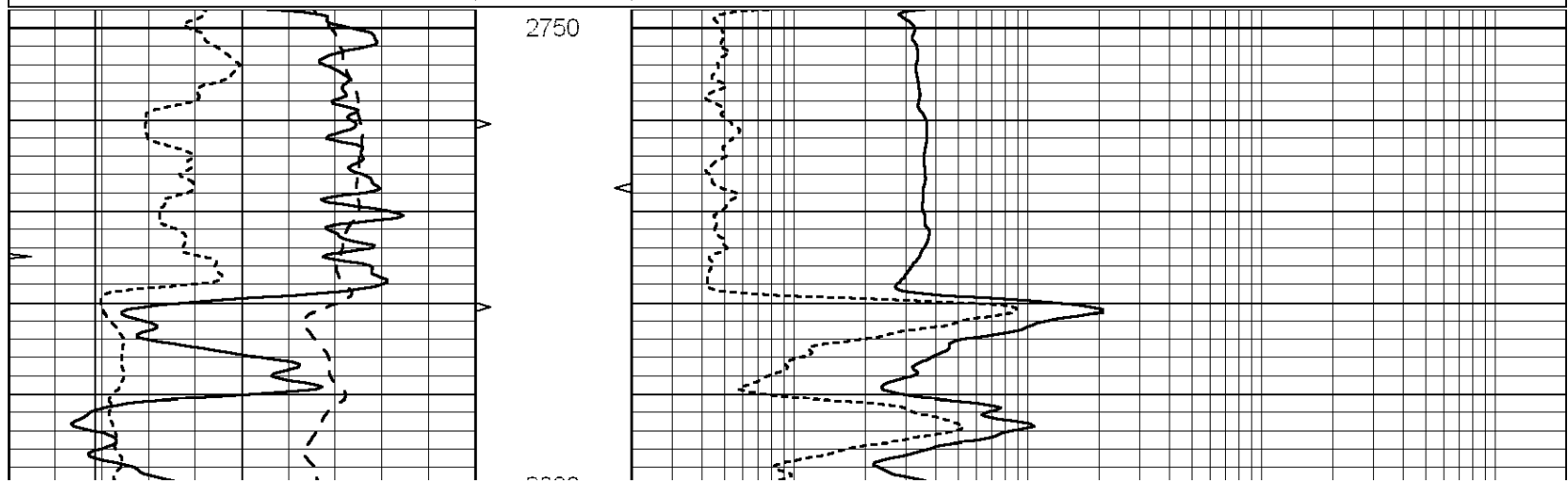
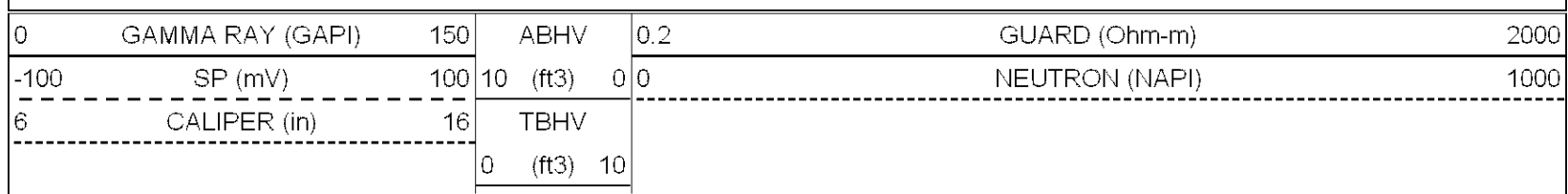


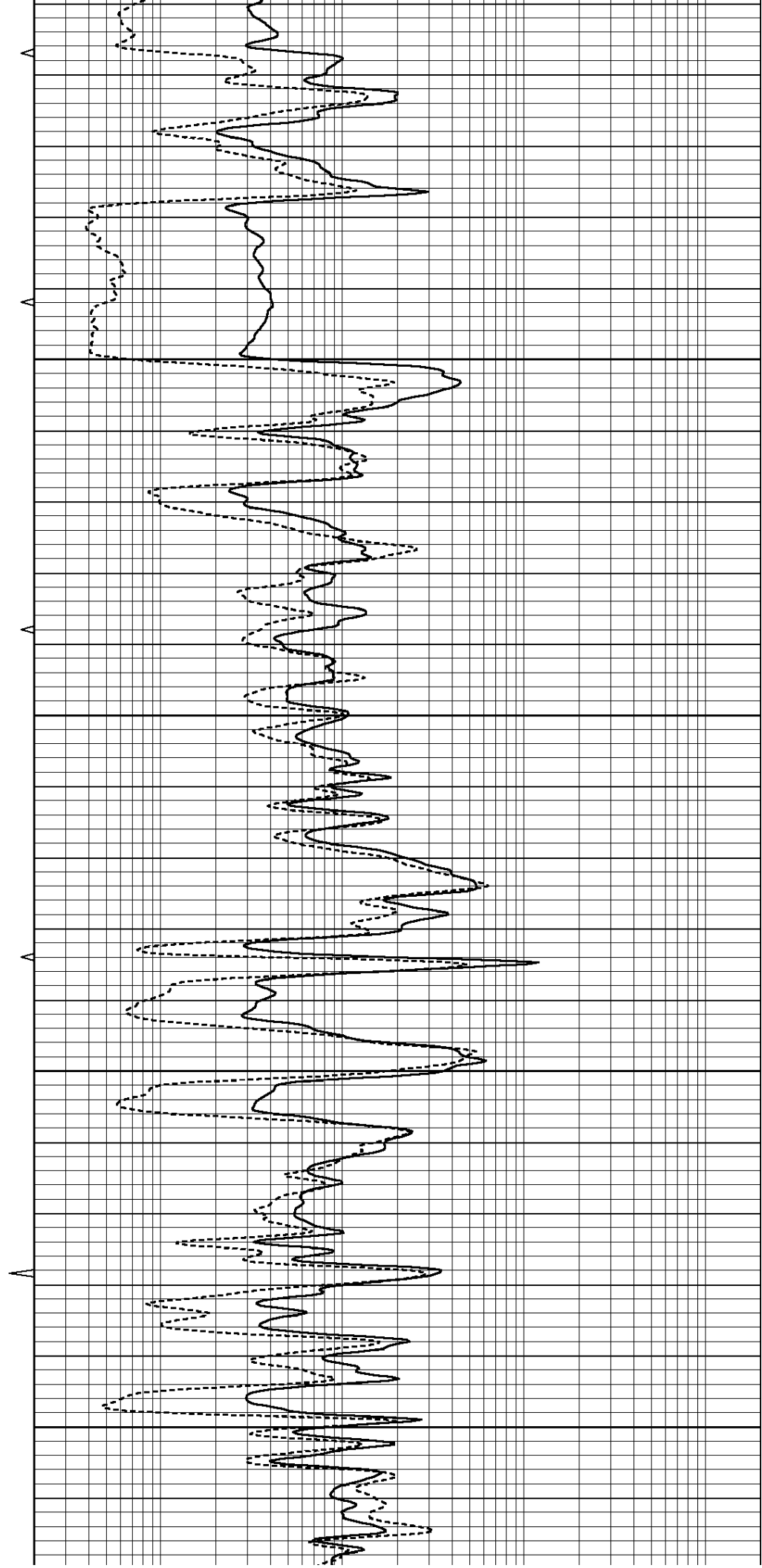
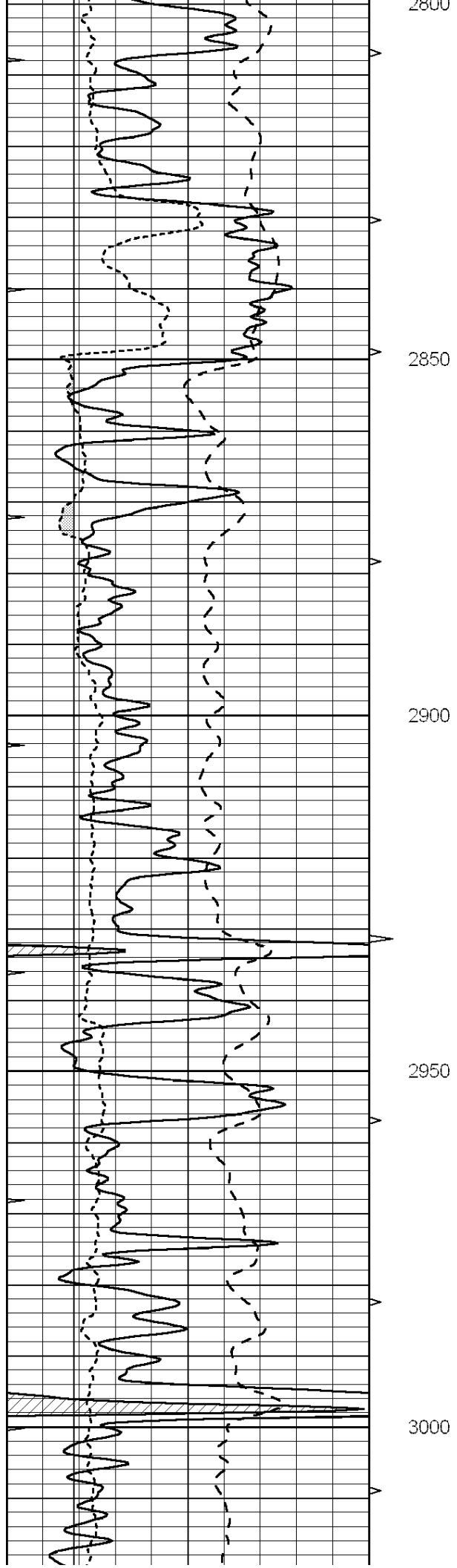


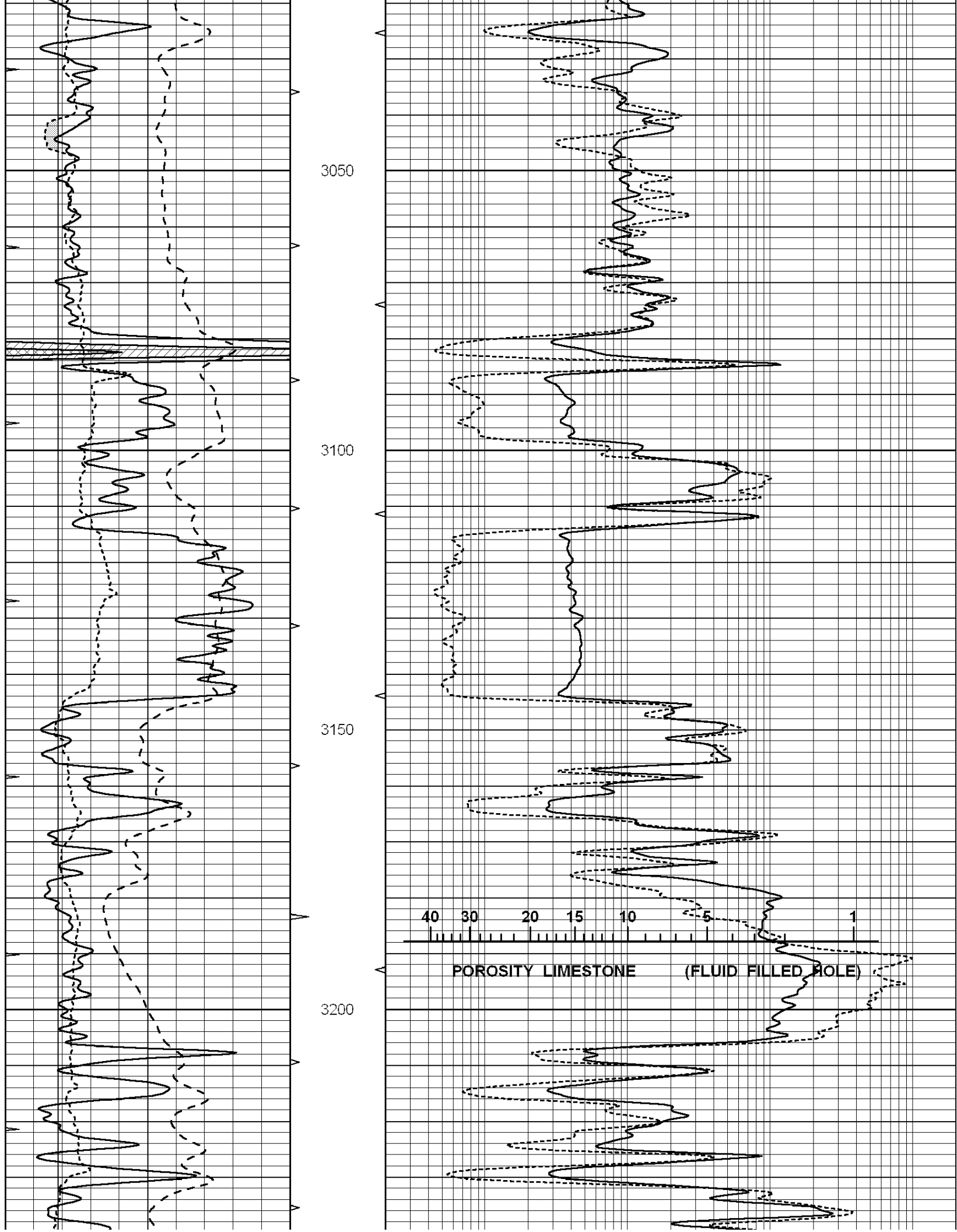
SUPERIOR
Hays,
Kansas

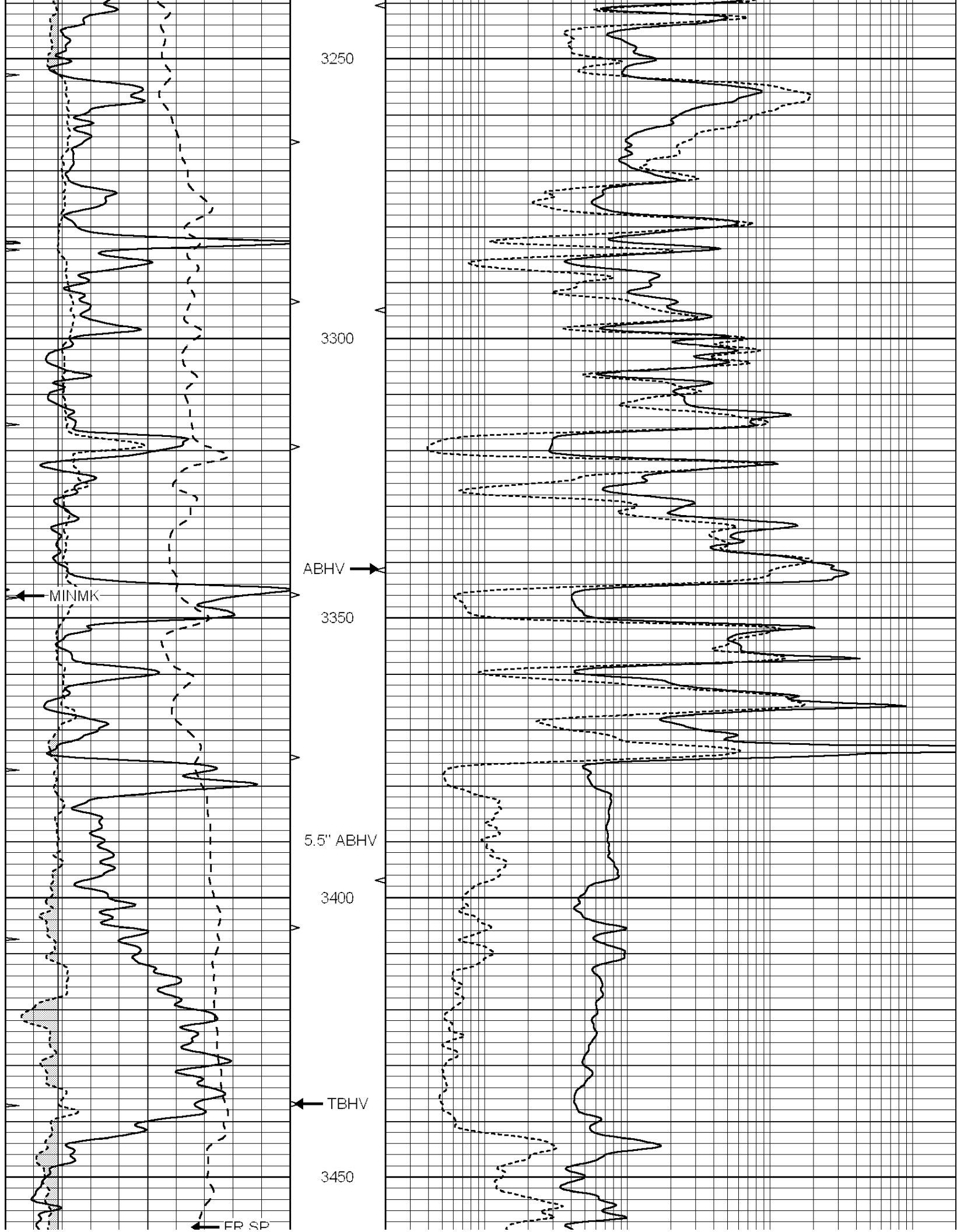
MAIN SECTION

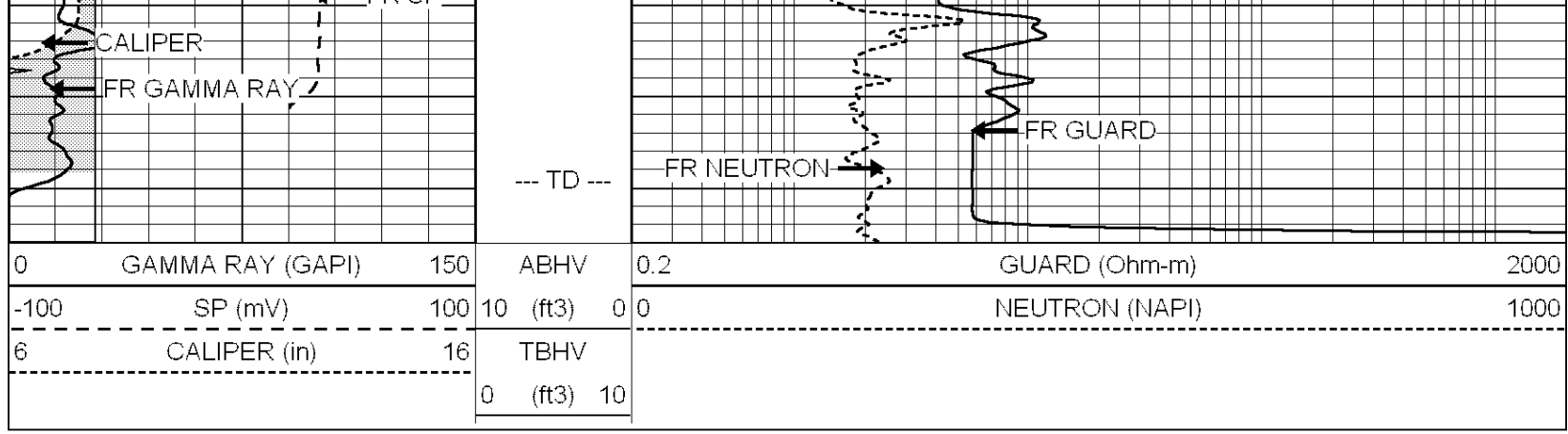
Database File: 008011rag.db
 Dataset Pathname: pass4A
 Presentation Format: rag
 Dataset Creation: Thu Nov 17 02:07:21 2011
 Charted by: Depth in Feet scaled 1:240



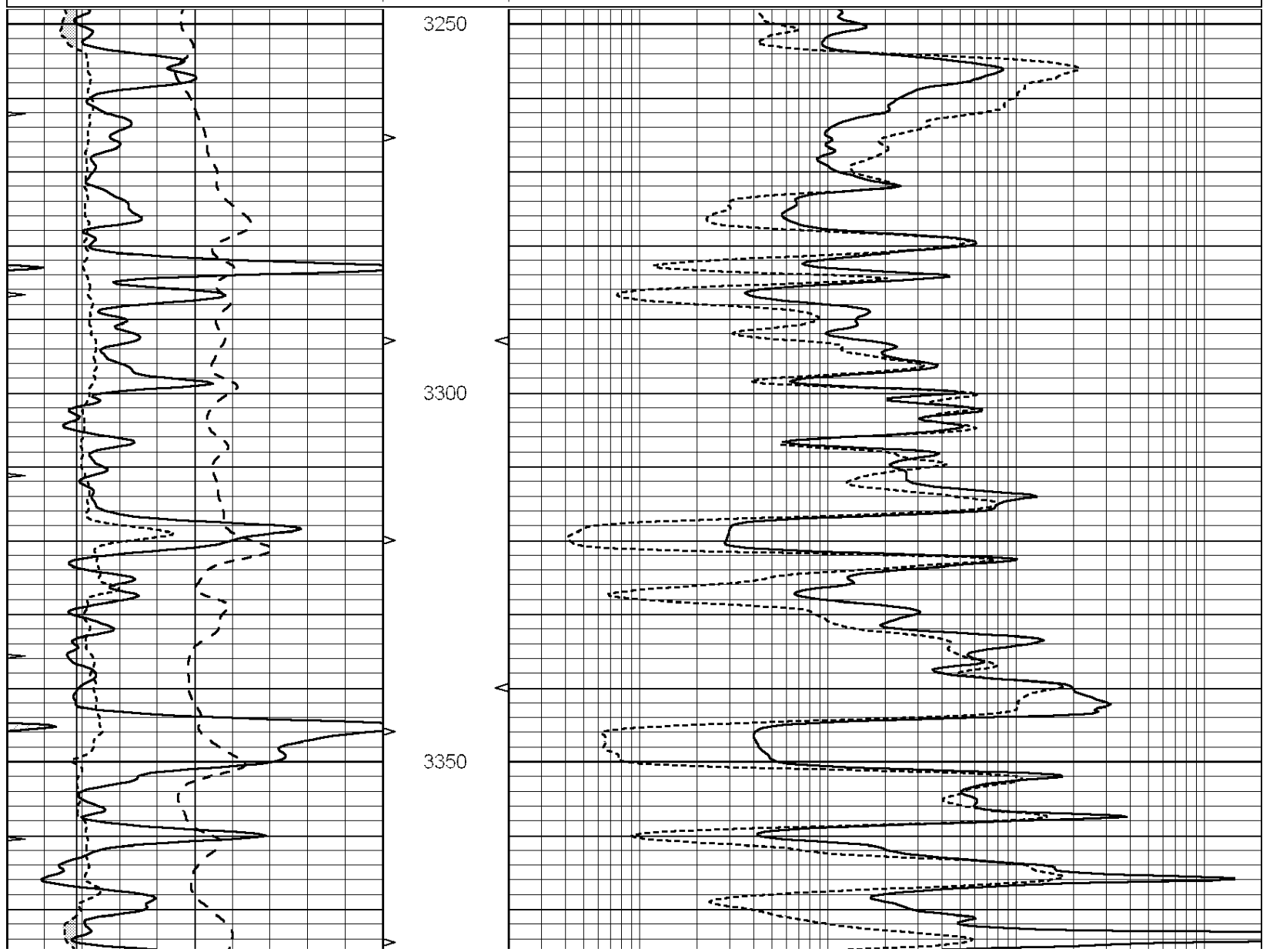
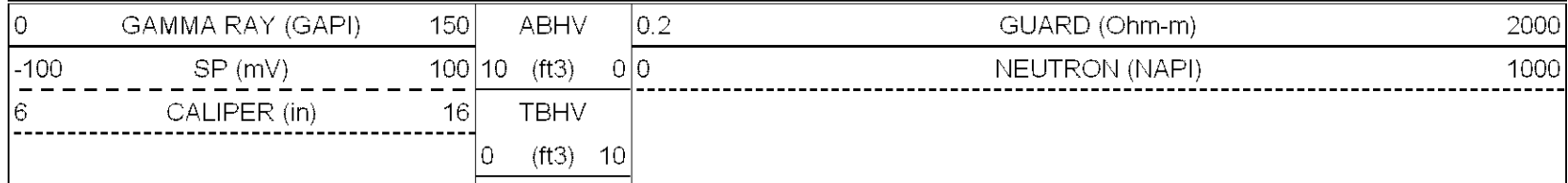


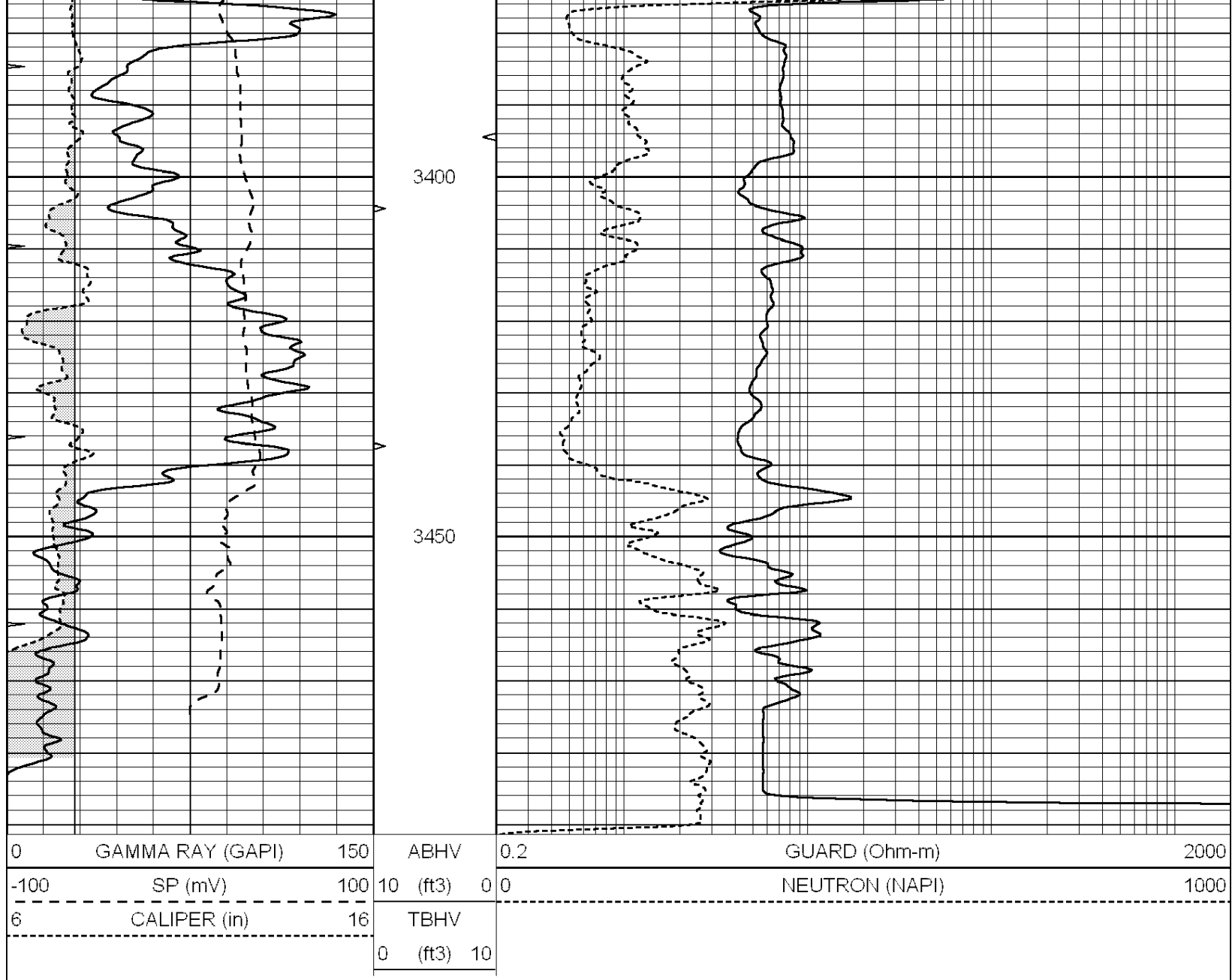






Database File: 008011rag.db
 Dataset Pathname: pass3.A
 Presentation Format: rag
 Dataset Creation: Thu Nov 17 01:23:56 2011 by Calc Open-Cased 090629
 Charted by: Depth in Feet scaled 1:240





Calibration Report

Database File: 008011rag.db
 Dataset Pathname: pass4A
 Dataset Creation: Thu Nov 17 02:07:21 2011

Neutron Calibration Report

Serial Number: RAG1
 Tool Model: RAG
 Performed: Thu Nov 17 00:59:59 2011

Calibrator Values:	0	1	NAPI
Calibrator Readings:	0	1	cps

Sensitivity: 1.6 NAPI/cps

Micro Spherically Focused Log Calibration Report

Serial-Model: RAG1-A
 Performed: Thu Nov 17 00:24:38 2011

Readings

Low High

References

Low High

Results

m b

Conductivity	0.0110	0.9000	V	10.0000	1000.0000	mmho	1800.0000	-5.0000
Caliper	0.2401	0.3178	V	9.0000	17.0000	in	102.9630	-15.7255

Gamma Ray Calibration Report

Serial Number:	RAG1	
Tool Model:	RAG	
Performed:	Wed Nov 16 23:05:59 2011	
Calibrator Value:	1.0	GAPI
Background Reading:	0.9	cps
Calibrator Reading:	1.0	cps
Sensitivity:	1.8000	GAPI/cps