



**TRILOBITE TESTING, INC.**

# DRILL STEM TEST REPORT

Dow ning-Nelson Oil Co Inc

**34-12s-21w Trego**

P O Box 1019  
Hays Ks 67601

**Seitz-BarnhardtC1-34**

ATTN: Ron Nelson

Job Ticket: 44765

**DST#: 2**

Test Start: 2011.11.01 @ 20:25:23

## GENERAL INFORMATION:

Formation: **LKC H-J**

Deviated: No Whipstock: ft (KB)

Time Tool Opened: 21:54:18

Time Test Ended: 01:27:47

Test Type: Conventional Bottom Hole (Reset)

Tester: Ray Schwager

Unit No: 42

**Interval: 3592.00 ft (KB) To 3666.00 ft (KB) (TVD)**

Reference Elevations: 2198.00 ft (KB)

Total Depth: 3666.00 ft (KB) (TVD)

2190.00 ft (CF)

Hole Diameter: 7.85 inches Hole Condition: Fair

KB to GR/CF: 8.00 ft

**Serial #: 6625 Inside**

Press @ Run Depth: 43.06 psig @ 3600.00 ft (KB)

Capacity: 8000.00 psig

Start Date: 2011.11.01

End Date:

2011.11.02

Last Calib.: 2011.11.02

Start Time: 20:25:23

End Time:

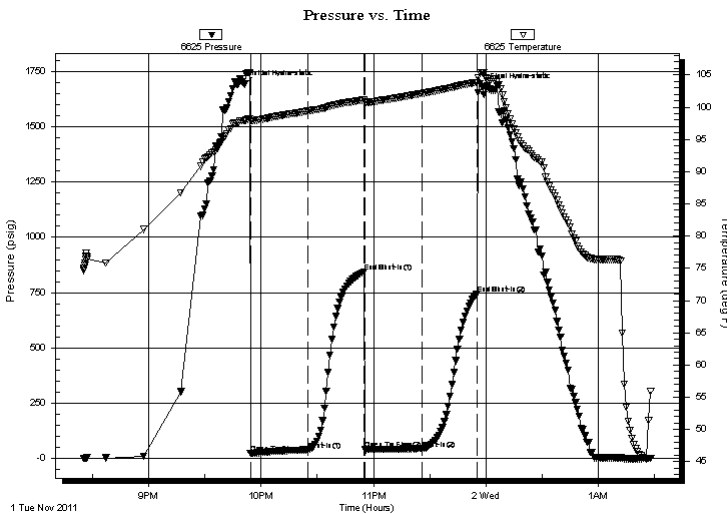
01:27:47

Time On Btm: 2011.11.01 @ 21:51:18

Time Off Btm: 2011.11.01 @ 23:58:18

**TEST COMMENT:** 30-IFP-w k bl 1/4"to 1"bl  
30-ISIP-no bl  
30-FFP-surface bl thru-out  
30-FSIP-no bl

## PRESSURE SUMMARY



Time (Min.)	Pressure (psig)	Temp (deg F)	Annotation
0	1692.13	97.95	Initial Hydro-static
3	22.45	97.94	Open To Flow (1)
34	38.25	99.37	Shut-In(1)
64	842.20	101.11	End Shut-In(1)
64	40.23	100.90	Open To Flow (2)
95	43.06	102.12	Shut-In(2)
124	744.33	103.85	End Shut-In(2)
127	1678.49	105.39	Final Hydro-static

## Recovery

Length (ft)	Description	Volume (bbl)
30.00	SOCM 2% O98%M	0.15

## Gas Rates

Choke (inches)	Pressure (psig)	Gas Rate (Mcf/d)

\* Recovery from multiple tests



**TRILOBITE  
TESTING, INC.**

# DRILL STEM TEST REPORT

**FLUID SUMMARY**

Dow ning-Nelson Oil Co Inc

**34-12s-21w Trego**

P O Box 1019  
Hays Ks 67601

**Seitz-BarnhardtC1-34**

Job Ticket: 44765

**DST#: 2**

ATTN: Ron Nelson

Test Start: 2011.11.01 @ 20:25:23

## Mud and Cushion Information

Mud Type: Gel Chem

Cushion Type:

Oil API:

deg API

Mud Weight: 9.00 lb/gal

Cushion Length:

ft

Water Salinity:

ppm

Viscosity: 60.00 sec/qt

Cushion Volume:

bbbl

Water Loss: 7.94 in<sup>3</sup>

Gas Cushion Type:

Resistivity: ohm.m

Gas Cushion Pressure:

psig

Salinity: 3000.00 ppm

Filter Cake: 1.00 inches

## Recovery Information

Recovery Table

Length ft	Description	Volume bbl
30.00	SOCM2%O98%M	0.148

Total Length: 30.00 ft      Total Volume: 0.148 bbl

Num Fluid Samples: 0

Num Gas Bombs: 0

Serial #:

Laboratory Name:

Laboratory Location:

Recovery Comments:

Serial #: 6625

Inside

Dow nting-Nelson Oil Co Inc

Seitz-Barnhardt C1-34

DST Test Number: 2

### Pressure vs. Time

