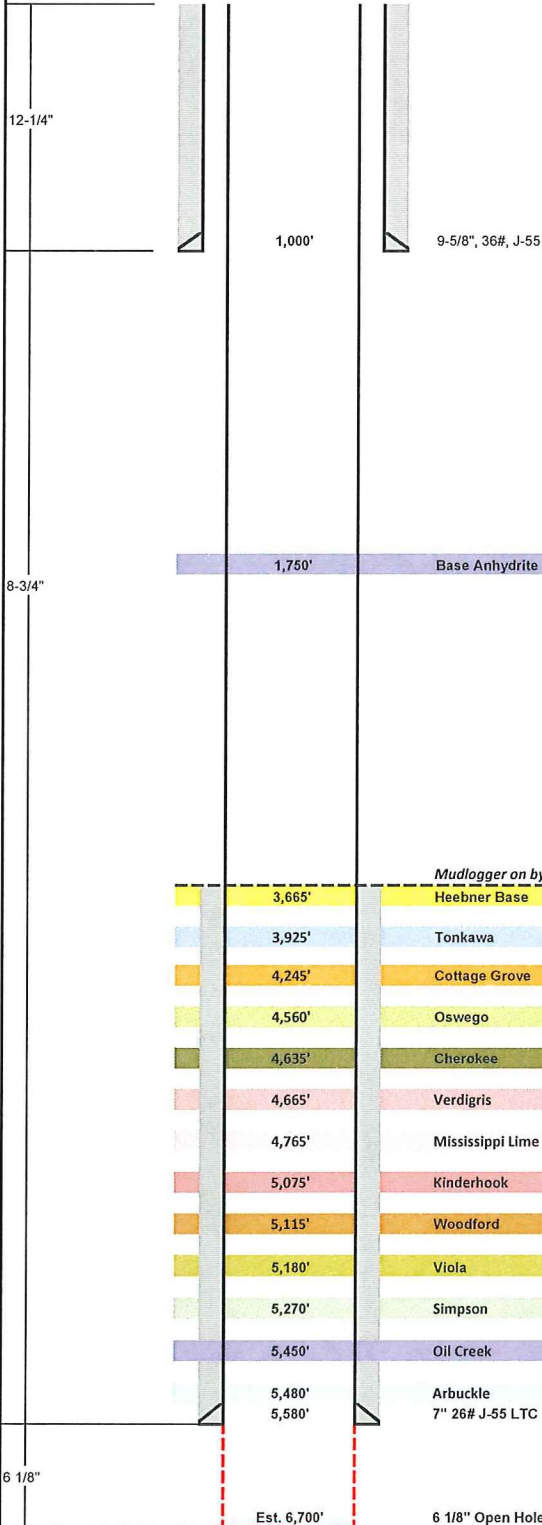




Well: Stephanie 1-3 SWD
 Field: Waldron-West
 County: Barber County, Kansas
 Surface: 2135' FSL & 178' FEL, Section 3-T355-R10W
 PBHL: 2135' FSL & 178' FEL, Section 3-T355-R10W
 GL: 1,317' KB: 1,328'

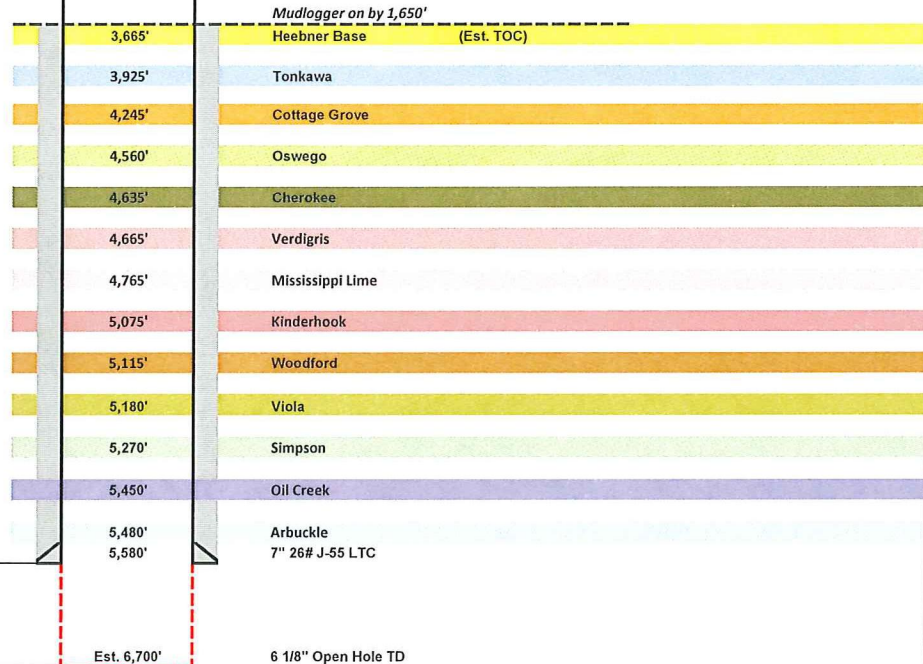
Engineer: David Mezo
 Manager: Roger Wilson
 Geology: Tammy Alcorn
 Production: Jason Powell
 Land: Stacey Bryant
 AFE #:



Wellhead Equipment	
Tubing Head	11" 3M X 7-1/16" 3M
B-Section	
A-Section	9-5/8" SOW x 11" 3M

Tubular Detail						
	Size	Wt	Grade	Conn	From	To
Surface	9-5/8"	36.0#	J-55	LT&C	0'	1,000'
Intermediate	7"	26#	J-55	LT&C	0'	5,540'
Intermediate	7"	24.75#	CR-120	VAM	1 Jt.	5,580'
Production:						

Logging Program			
	Detail	From	To
Run #1	Ind, GR,CND, Microlog, Sonic	TD	1,650'
Run #2			



Prepared By	Date	Cementing	Logging Company	Mud Loggers	Mud Company	Directional
David Mezo	8/22/2011	O-Tex (580) 475-2538	TBD	PML Gregg Donley (405) 623-4329	Chaparral Drilg Fluids Ken Bizzell (405) 464-8241	None