

LS: cream-gry fxl dense
 poor vis^o n/s

LS: cream-gry fxl chky in
 part dense sl: dy

LS: cream-tan fxl
 'sl: fss scatt' n/s

LS: cream-ck fxl sl: fss
 few loose fss fragments (dis)

gry fss barry Δ

blk carb shale

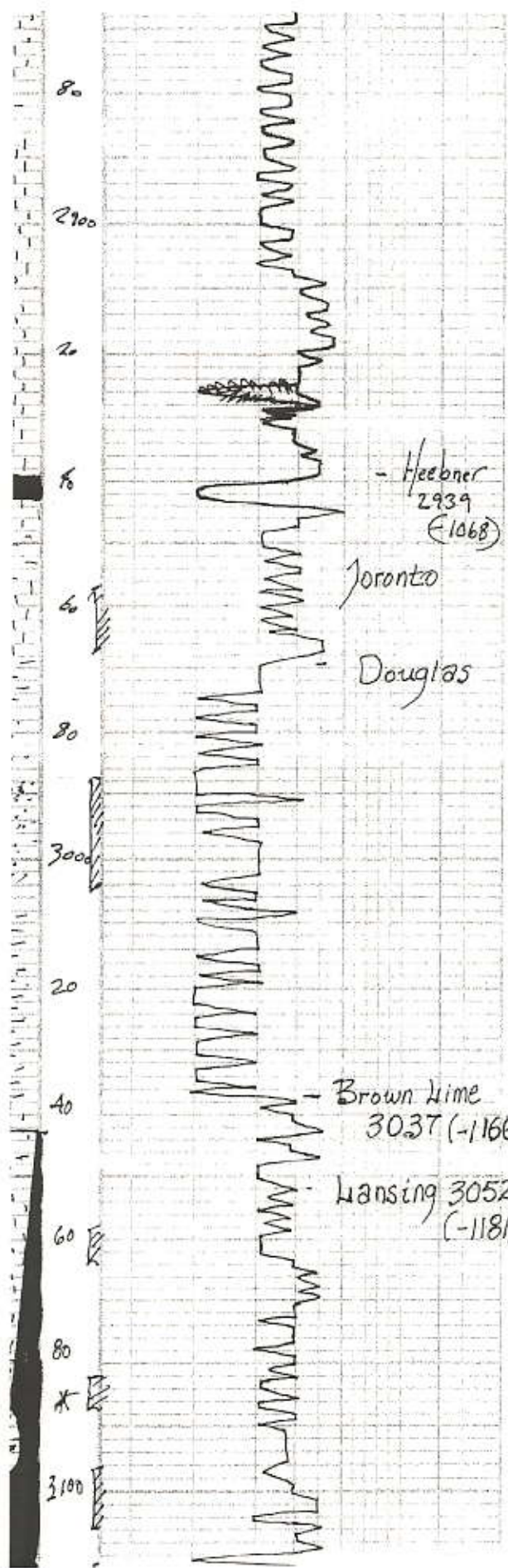
gry sh

gry-mar shale

LS: cream-gry fxl chky
 'mott in part poor' n/s
 to amber-gry Δ

LS: cream-gry f-med xl sl: fss
 chky in part green n/s

blk carb shale



fr. to gray-lk tan str to fo
 very ft odor

SS

LS: cream tan fine dense
 'chky poor, drs' ool
 + em bony d

LS: cream fine foss chky
 dense poor vis; dy

SS

~ blk carb shale

LS: gray, whi, fxl, chky,
 brown-golden brown str
 nsfo, ??? odor.

~ v.g. soft sh
 +
 sand, gray/greyish green
 vfg. mica, fr. str/sol
 sfo, ??? odor.
 (odor samples broken)

} 2
 aca

} 2
 n. f. s. 2

LS: tan/brown, fxl,
 slightly dy (dls)

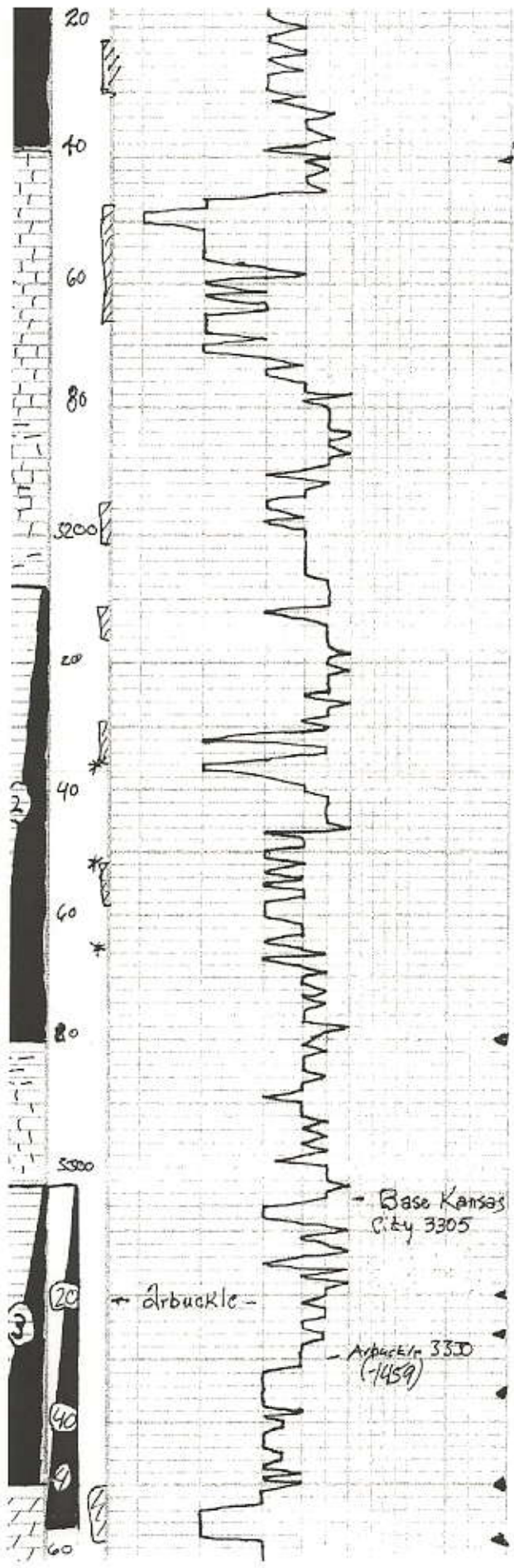
LS: cream, whi, ool, sub ool,
 chky, brown str, sfo
 ft odor samples broken

} 2

LS: gray whi, fxl, chky,
 sfo, (p.p. type), golden
 brown str/sol; sfo, sfo

LS: gray/tan ool, chky,
 sfo, poor vis
 ??? str, nsfo, no odor

DST #1 3042-3138
 30-45-45-60
 Initial Blow:
 Strong B.O.B 4min.
 Recovery:
 1000' GIP
 200' O.W.C.M.
 (15% oil, 10% wtr, 30% gas, 45%
 Pressure:
 ISIP - 348 psi
 FSIIP - 329 psi
 IFF - 41-78 psi
 FFP - 88-114 psi
 ISH - 1477-1454 psi



LS. Gray form, fossil, Chalky
Slaty or brown-golden
brown str. w. k. sfo, fr. gas
bubbles

LS. crm/gyr. Foss. chalky
ppt-w. sfo. dark bluish str.
FAIR ODO

LS. crm/fin ool. Sep. com. to com.
Fossils. Slaty. H. brown chalky
OY. Fair odor

LS. crm/gyr ool. com. Fossils
H. brown str. T.S.F.O. chalky
OY. Fair odor

KB 1871

AA. dead oil T.S.F.O.
Fair odor

LS. crm/fin ool. com. or chalky w/
few fossils

LS. crm/fin/gyr ool. com. few fossils
Chalky
Slaty. silt carb. sly/gm

LS. crm/fin ool. com. or chalky

AA

DST #2 3208-3280
30-45-45-45

LS. crm/fin fin ool. scattered subcom.
Fair odor. Silt. H. brown str. T.S.F.O.

Initial Blow;
Weak 3" steady
Fm; Good built to 6"

LS. crm/fin ool. com. or silt/str.
golden brown, S.F.O. good odor

Recovery
40' SLG w/cm
57% gas; 8% wtr; 10% oil; 77%

LS. crm/fin ool. com. or few fossils
str. H. golden brown. Broken open
S.F.O. good odor

Pressures
ISIP - 503 psi
FSIP - 513 psi
IFP - 32-35 psi
FFP - 38-45 psi
HSH - 1575-1642 psi

AA

LS. crm/fin ool. com. or
good odor. H. brown str. S.F.O.

LS. crm/gyr ool. fossils, mostly
low vis. or shale-gly/gm abundant

DST #3 3303-3350
30-45-45-60

LS. wht/crm/gyr fin. few fossils
oy. dense low vis. or

Blow; Built to 6"
Recovery;
100' vs 60cm
(3% gas; 2% oil; 9% mud)

LS. crm/fin fin. dense few fossils
softened com. chalky

Pressures;
ISIP - 981 psi
FSIP - 911 psi
IFP - 53-50 psi
FFP - 52-73 psi
HSH - 1641-1587 psi

Dol. wht/crm fin. low or
Chalky NS; D-Fin/peach Reworked

Dol. crm/wht fin. low or p-crm/wht
Chalky Red matrix Reworked??

Dol. wht/gyr fin. rhomb. in matrix or
sly/chalky NS

DST #4 3303-3357
30-45-45-60

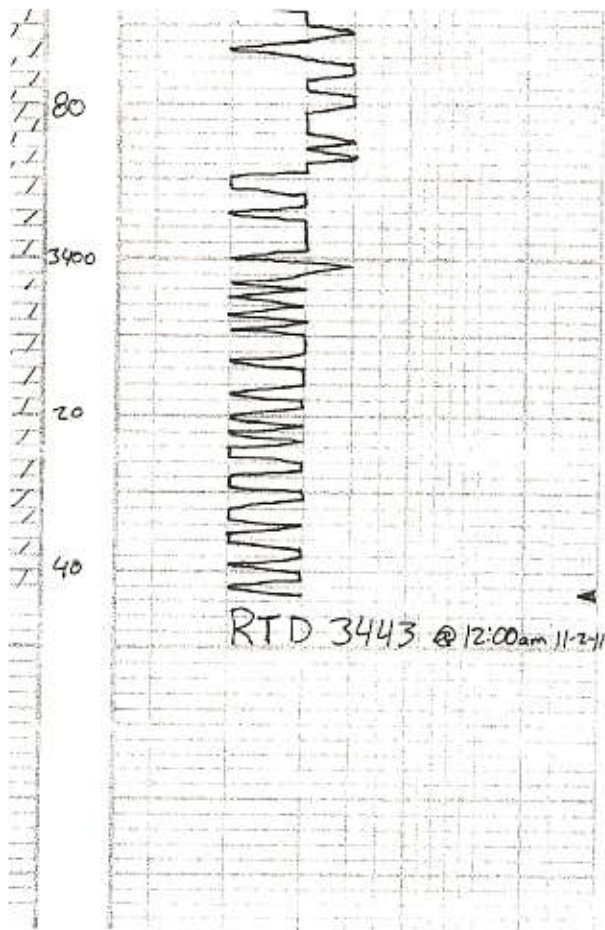
Dol. crm/wht f. med rhomb. in matrix or
S.F.O. Fair odor

Blow; Good B.O. B 20m

Dol. wht/gyr f. med rhomb. in matrix
or, golden/brown str. S.F.O. good odor

Recovery;
280' muddy wtr w/oil sp
(40% mud; 60% wtr)
Str.

Dol. wht/crm. Precip. rhomb. in
matrix or w. sfo. Silt. H. brown str.
Good S.F.O. Fair odor



Dol - wht/gray f-med xln - rhomb
 inter xln + scattered vng. o. No
 No; ool. o - cream/wh, silty/chalky

FSIP - 1051pa
 IFP - 40-104pa
 FFP - 111-167pa
 BSIT - K32-1506pa

Dol - wht/cream f-med xln - rhomb
 poor inter. o, dense; chalky No; No

AA Chalky

{
 Δ - wht. ool/cream

Dol - cream f-med rhomb xln
 inter xln + scattered vng. o. No
 No odor - chalky.

Dol - wht f-med rhomb xln inter
 xln + scattered vng. o. No
 cream/wh.

Dol - wht/cream f-med rhomb xln, inter
 xln + glass @ barren

Dol - wht/gray f-med rhomb xln
 inter xln + scattered vng. o.
 Silty glass. Barren. No odor

RTD 3443 @ 12:00am 11-2-11