



TEMPORARY ABANDONMENT WELL APPLICATION

All blanks must be complete

OPERATOR: License# _____
 Name: _____
 Address 1: _____
 Address 2: _____
 City: _____ State: _____ Zip: _____ + _____
 Contact Person: _____
 Phone: (_____) _____
 Contact Person Email: _____
 Field Contact Person: _____
 Field Contact Person Phone: (_____) _____

API No. 15- _____
 Spot Description: _____
 _____ - _____ - _____ - _____ Sec. _____ Twp. _____ S. R. _____ E W
 _____ feet from N / S Line of Section
 _____ feet from E / W Line of Section
 GPS Location: Lat: _____, Long: _____
(e.g. xx.xxxxx) (e.g. -xxx.xxxxx)
 Datum: NAD27 NAD83 WGS84
 County: _____ Elevation: _____ GL KB
 Lease Name: _____ Well #: _____
 Well Type: (check one) Oil Gas OG WSW Other: _____
 SWD Permit #: _____ ENHR Permit #: _____
 Gas Storage Permit #: _____
 Spud Date: _____ Date Shut-In: _____

	Conductor	Surface	Production	Intermediate	Liner	Tubing
Size						
Setting Depth						
Amount of Cement						
Top of Cement						
Bottom of Cement						

Casing Fluid Level from Surface: _____ How Determined? _____ Date: _____
 Casing Squeeze(s): _____ to _____ w / _____ sacks of cement, _____ to _____ w / _____ sacks of cement. Date: _____
(top) (bottom) (top) (bottom)
 Do you have a valid Oil & Gas Lease? Yes No
 Depth and Type: Junk in Hole at _____ Tools in Hole at _____ Casing Leaks: Yes No Depth of casing leak(s): _____
(depth) (depth)
 Type Completion: ALT. I ALT. II Depth of: DV Tool: _____ w / _____ sacks of cement Port Collar: _____ w / _____ sack of cement
(depth) (depth)
 Packer Type: _____ Size: _____ Inch Set at: _____ Feet
 Total Depth: _____ Plug Back Depth: _____ Plug Back Method: _____

Geological Data:

Formation Name	Formation Top	Formation Base	Completion Information
1. _____	At: _____	to _____ Feet	Perforation Interval _____ to _____ Feet or Open Hole Interval _____ to _____ Feet
2. _____	At: _____	to _____ Feet	Perforation Interval _____ to _____ Feet or Open Hole Interval _____ to _____ Feet

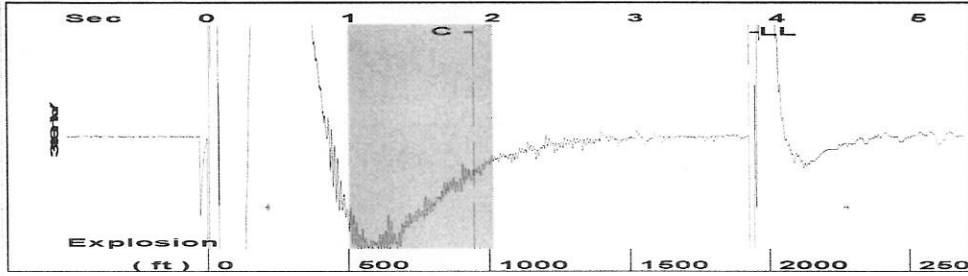
UNDER PENALTY OF PERJURY I HEREBY ATTEST THAT THE INFORMATION CONTAINED HEREIN IS TRUE AND CORRECT TO THE BEST OF MY KNOWLEDGE

Submitted Electronically

Do NOT Write in This Space - KCC USE ONLY	Date Tested: _____	Results: _____	Date Plugged: _____	Date Repaired: _____	Date Put Back in Service: _____
	Review Completed by: _____ Comments: _____				
TA Approved: <input type="checkbox"/> Yes <input type="checkbox"/> Denied Date: _____					

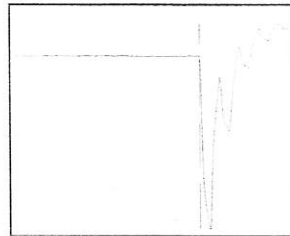
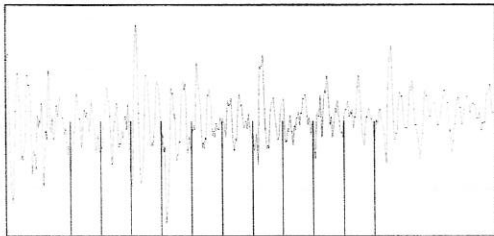
Mail to the Appropriate KCC Conservation Office:

	KCC District Office #1 - 210 E. Frontview, Suite A, Dodge City, KS 67801	Phone 620.225.8888
	KCC District Office #2 / UPGS - 3450 N. Rock Road, Building 600, Suite 601, Wichita, KS 67226	Phone 316.630.4000
	KCC District Office #3 - 1500 SW Seventh Steet, Chanute, KS 66720	Phone 620.432.2300
	KCC District Office #4 - 2301 E. 13th Street, Hays, KS 67601-2651	Phone 785.625.0550

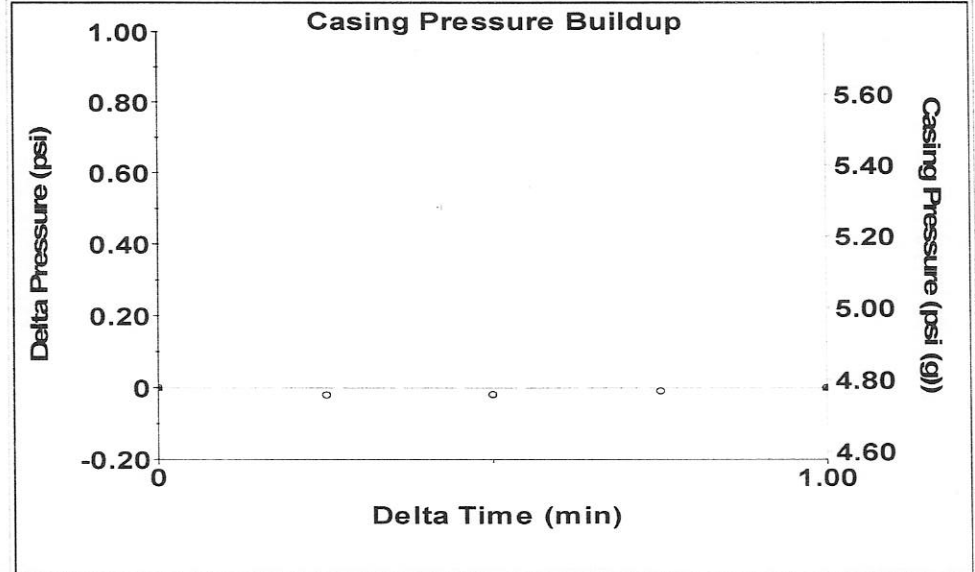


Filter Type High Pass Automatic Collar Count Yes Time 3.799 sec
 Manual Acoustic Velo 1016.03 ft/s Manual JTS/sec 16.0256 Joints 60.8072 Jts
 Depth 1927.59 ft

[1.0 to 2.0 (Sec)]



Analysis Method: Automatic



Change in Pressure -0.00 psi PT 4184
 Change in Time 1.00 min Range 0 - ? psi

Production
 Current Potential
 Oil - * - BBL/D
 Water - * - BBL/D
 Gas - * - Mscf/D
 IPR Method Vogel
 PBHP/SBHP - * -
 Production Efficiency 0.0

Oil 40 deg.API
 Water 1.05 Sp.Gr.H2O
 Gas 0.96 Sp.Gr.AIR

Acoustic Velocity 1014.79 ft/s

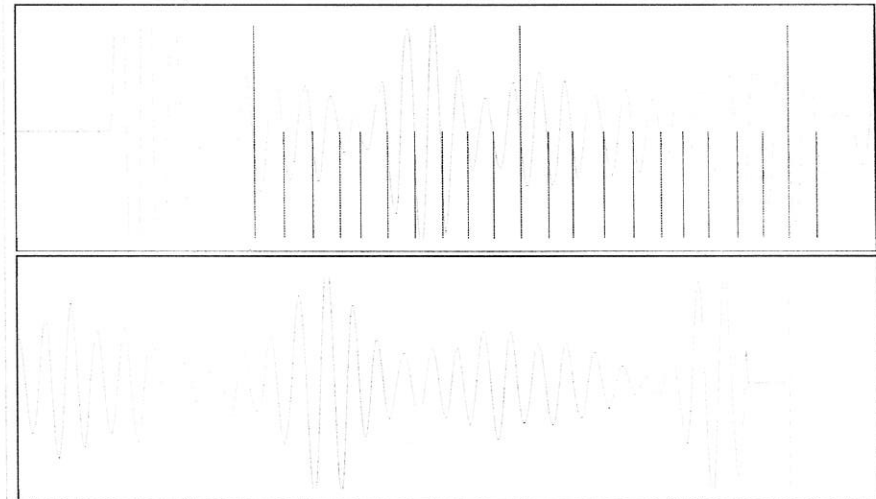
Formation Submergence
 Total Gaseous Liquid Column HT (TVD) 2272 ft
 Equivalent Gas Free Liquid HT (TVD) 2272 ft

Acoustic Test

Casing Pressure 4.8 psi (g)
 Casing Pressure Buildup -0.000 psi
 1.00 min
 Gas/Liquid Interface Pressure 6.1 psi (g)
 Liquid Level Depth 1927.59 ft
 Tubing Intake Depth 4200.00 ft
 Formation Depth 4200.00 ft



Producing
 Casing % Liquid 100 %
 Tubing Intake 1039.2 psi (g)
 Producing BHP 1039.2 psi (g)
 Static BHP - * - psi (g)



Acoustic Velocity 1014.79 ft/s Joints counted 21
 Joints Per Second 16.0061 jts/sec Joints to liquid level 60.8072
 Depth to liquid level 1927.59 ft Filter Width 14.0256 18.0256
 Automatic Collar Count Yes Time to 1st Collar 0.552 1.864

Conservation Division
District Office No. 1
210 E. Frontview, Suite A
Dodge City, KS 67801



Phone: 620-225-8888
Fax: 620-225-8885
<http://kcc.ks.gov/>

Mark Sievers, Chairman
Ward Loyd, Commissioner
Thomas E. Wright, Commissioner

Sam Brownback, Governor

December 13, 2011

Kenneth C. Gates
Iuka-Carmi Development LLC
PO BOX 847
PRATT, KS 67124-0847

Re: Temporary Abandonment
API 15-151-10162-00-00
ICHU 3
NE/4 Sec.06-27S-12W
Pratt County, Kansas

Dear Kenneth C. Gates:

Your application for Temporary Abandonment (TA) of the above-listed well is denied for the following reasons(s):

OVR10 - Shut in over 10 years

In accordance with K.A.R. 82-3-111, this well must be plugged or returned to service by January 12, 2012.

You may file an application for an exception to the 10-year limitation in K.A.R. 82-3-111 to demonstrate why it is necessary to TA the above well for more than (10) years. You must notify the Commission in writing no later than January 12, 2012 of your intention to file the application, and your complete application is due February 11, 2012. All applications and written notifications must be sent to the attention of the Executive Director at the Kansas Corporation Commission Conservation Division at 130 South Market, Room 2078, Wichita, Kansas 67202.

You may contact me at the number above if you have any questions.

Sincerely,

Steve Pfeifer