



TEMPORARY ABANDONMENT WELL APPLICATION

OPERATOR: License# _____
 Name: _____
 Address 1: _____
 Address 2: _____
 City: _____ State: _____ Zip: _____ + _____
 Contact Person: _____
 Phone: (_____) _____
 Contact Person Email: _____
 Field Contact Person: _____
 Field Contact Person Phone: (_____) _____

API No. 15- _____
 Spot Description: _____
 _____ Sec. _____ Twp. _____ S. R. _____ E W
 _____ feet from N / S Line of Section
 _____ feet from E / W Line of Section
 GPS Location: Lat: _____, Long: _____
(e.g. xx.xxxxx) (e.g. -xxx.xxxxx)
 County: _____
 Lease Name: _____ Well #: _____
 Elevation: _____ GL KB
 Well Type: (check one) Oil Gas OG WSW Other: _____
 SWD Permit #: _____ ENHR Permit #: _____
 Gas Storage Permit #: _____
 Spud Date: _____ Date Shut-In: _____

	Conductor	Surface	Production	Intermediate	Liner	Tubing
Size						
Setting Depth						
Amount of Cement						
Top of Cement						
Bottom of Cement						

Casing Fluid Level: _____ How Determined? _____ Date: _____
 Casing Squeeze(s): _____ to _____ w / _____ sacks of cement, _____ to _____ w / _____ sacks of cement. Date: _____
(top) (bottom) (top) (bottom)
 Do you have a valid Oil & Gas Lease? Yes No
 Depth and Type: Junk in Hole at _____ Tools in Hole at _____ Casing Leaks: Yes No Depth of casing leak(s): _____
(depth) (depth)
 Type Completion: ALT. I ALT. II Depth of: DV Tool: _____ w / _____ sacks of cement Port Collar: _____ w / _____ sack of cement
(depth) (depth)
 Packer Type: _____ Size: _____ Inch Set at: _____ Feet
 Total Depth: _____ Plug Back Depth: _____ Plug Back Method: _____

Geological Data:

Formation Name	Formation Top	Formation Base	Completion Information
1. _____	At: _____	to _____ Feet	Perforation Interval _____ to _____ Feet or Open Hole Interval _____ to _____ Feet
2. _____	At: _____	to _____ Feet	Perforation Interval _____ to _____ Feet or Open Hole Interval _____ to _____ Feet

Submitted Electronically

Do NOT Write in This Space - KCC USE ONLY

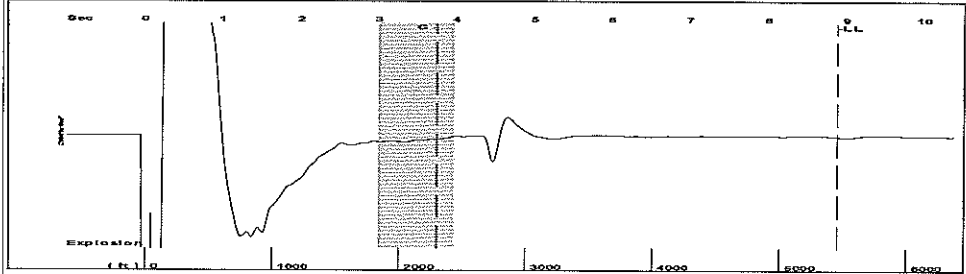
Date Tested: _____ Results: _____ Date Plugged: _____ Date Repaired: _____ Date Put Back in Service: _____

Review Completed by: _____ Comments: _____ TA Approved: Yes Denied

Mail to the Appropriate KCC Conservation Office:

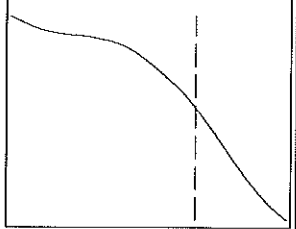
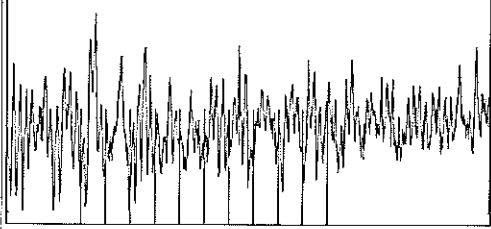
	KCC District Office #1 - 210 E. Frontview, Suite A, Dodge City, KS 67801	Phone 620.225.8888
	KCC District Office #2 - 3450 N. Rock Road, Building 600, Suite 601, Wichita, KS 67226	Phone 316.630.4000
	KCC District Office #3 - 1500 SW Seventh Steet, Chanute, KS 66720	Phone 620.432.2300
	KCC District Office #4 - 2301 E. 13th Street, Hays, KS 67601-2651	Phone 785.625.0550
	Underground Porosity Gas Storage (UPGS) 8200 E. 34th Street Circle N., Suite 1003, Wichita, KS 67226	Phone 316.734.4933

Group: MyWells Well: Mc Coy 3-26 (acquired on: 12/13/11 09:36:37)



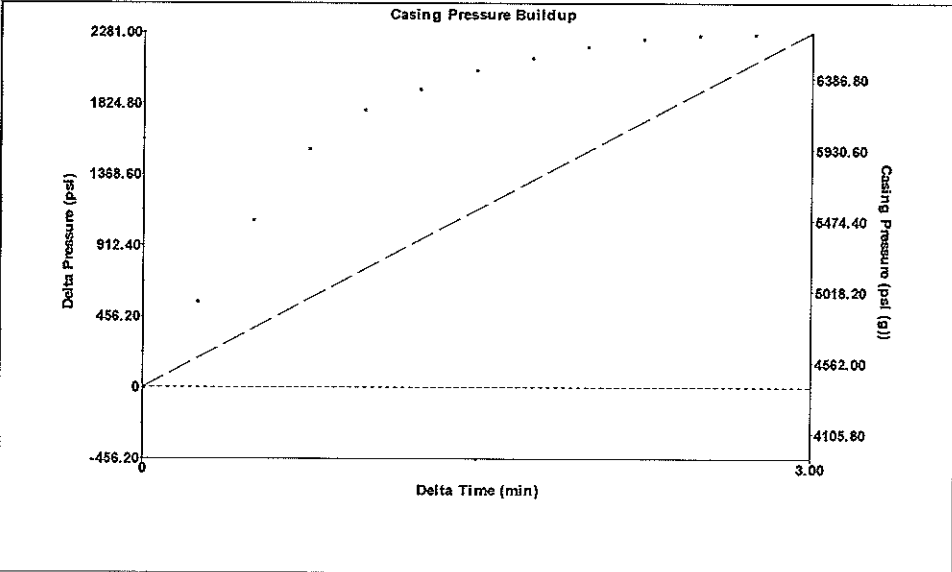
Filter Type High Pass Automatic Collar Count Yes Time 8.884 sec
 Manual Acoustic Veloc 1243.14 ft/s Manual JTS/sec 19.6078 Joints 172.031 Jts
 Depth 5453.39 ft

[3.0 to 4.0 (Sec)]



Analysis Method: Automatic

Group: MyWells Well: Mc Coy 3-26 (acquired on: 12/13/11 09:36:37)



Change in Pressure 2280.06 psi PT 6147
 Change in Time 3.00 min Range 0 - ? psi

Group: MyWells Well: Mc Coy 3-26 (acquired on: 12/13/11 09:36:37)

Production	Potential	Casing Pressure
Current		4402.9 psi (g)
Oil - * -	- * - BBL/D	Casing Pressure Buildup
Water - * -	- * - BBL/D	2280.1 psi
Gas - * -	- * - Mscf/D	3.00 min
		Gas/Liquid Interface Pressure
		5051.9 psi (g)
IPR Method	Vogel	Liquid Level Depth
PBHP/SBHP	- * -	5453.39 ft
Production Efficiency	0.0	Pump Intake Depth
		5475.00 ft
Oil 40 deg API		Formation Depth
Water 1.05 Sp.Gr.H2O		5500.00 ft
Gas 0.70 Sp.Gr.AIR		
Acoustic Velocity	1227.69 ft/s	



Producing

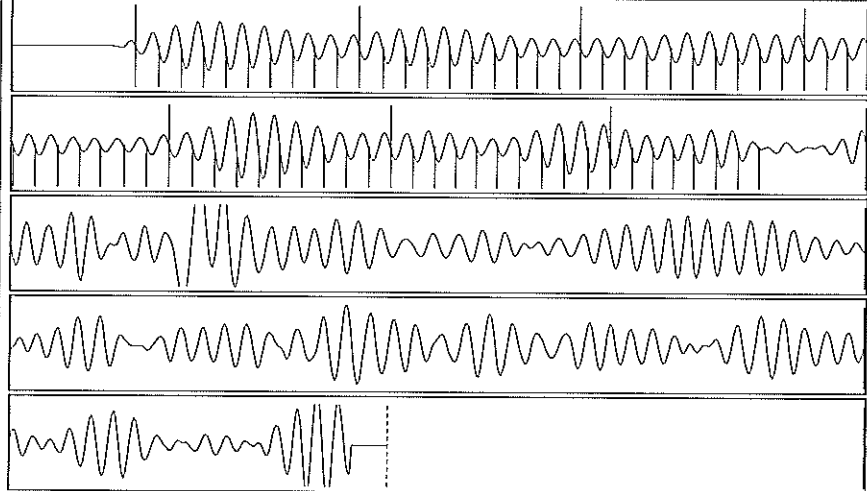
Annular Gas Flow 24467 Mscf/D
 % Liquid 19 %

Pump Intake
 5052.7 psi (g)
 Producing BHP 5058.0 psi (g)
 Static BHP - * - psi (g)

Formation Submergence
 Total Gaseous Liquid Column HT (TVD) 22 ft
 Equivalent Gas Free Liquid HT (TVD) 4 ft

Acoustic Test

Group: MyWells Well: Mc Coy 3-26 (acquired on: 12/13/11 09:36:37)



Acoustic Velocity	1227.69 ft/s	Joints counted	67
Joints Per Second	19.3642 jts/sec	Joints to liquid level	172.031
Depth to liquid level	5453.39 ft	Filter Width	17.6078 21.6078
Automatic Collar Count	Yes	Time to 1st Collar	0.288 3.748