

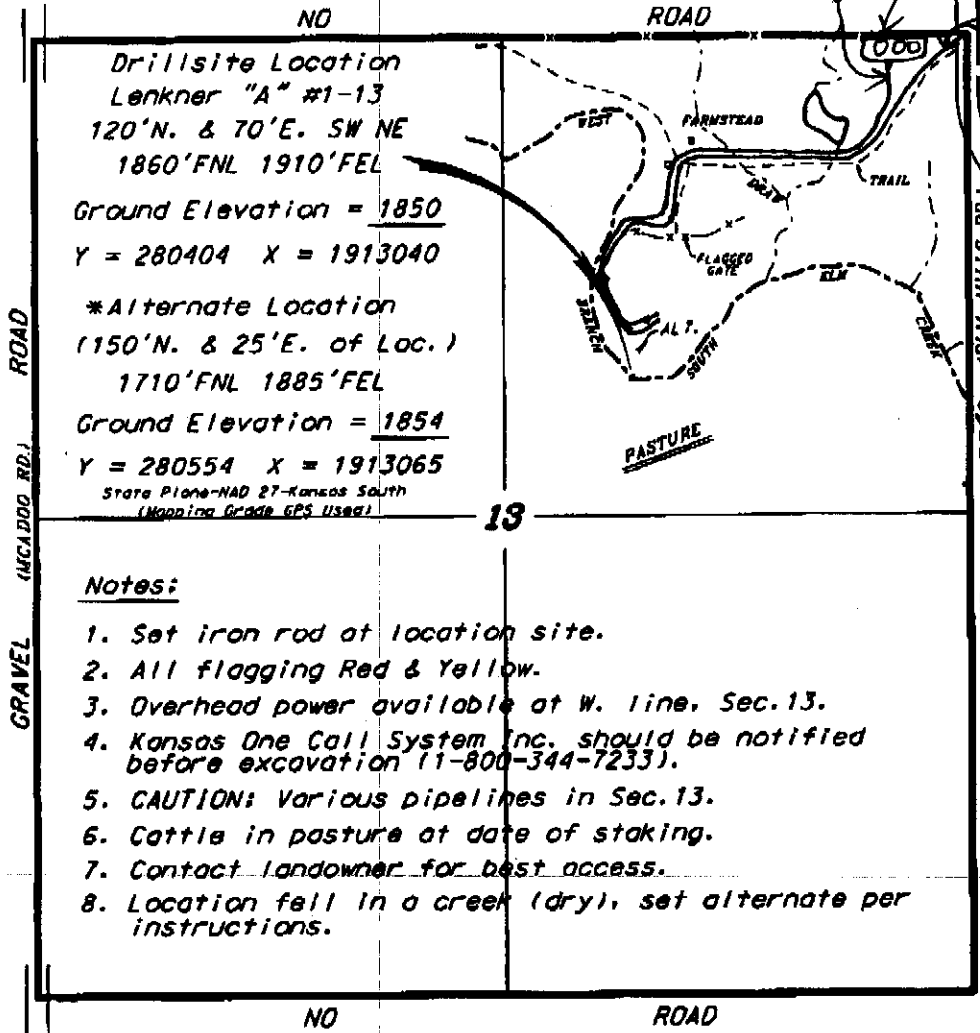
12/01/2011 16:31 FAX 6207922873

CENTRAL KS SURVEYING

004

F.G. HOLL COMPANY, LLC
 LENKNER LEASE
 NE. 1/4, SECTION 13, T30S, R14W
 BARBER COUNTY, KANSAS

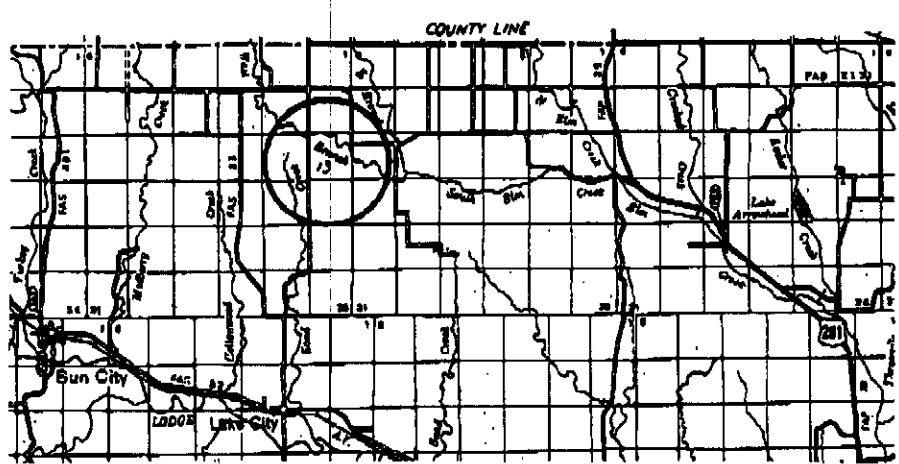
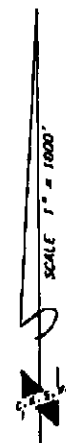
Leadline
 Tank battery loc
 Access Roads



Drillsite Location
 Lenkner "A" #1-13
 120'N. & 70'E. SW NE
 1860'FNL 1910'FEL
 Ground Elevation = 1850
 Y = 280404 X = 1913040
 *Alternate Location
 (150'N. & 25'E. of Loc.)
 1710'FNL 1885'FEL
 Ground Elevation = 1854
 Y = 280554 X = 1913065
 State Plane-NAD 87-Kansas South
 (Mapping Grade GPS Used)

- Notes:**
1. Set iron rod at location site.
 2. All flagging Red & Yellow.
 3. Overhead power available at W. line, Sec.13.
 4. Kansas One Call System Inc. should be notified before excavation (1-800-344-7233).
 5. CAUTION: Various pipelines in Sec.13.
 6. Cattle in pasture at date of staking.
 7. Contact landowner for best access.
 8. Location fell in a creek (dry), set alternate per instructions.

Ingress and egress to location as shown on this plot is for usage only and may not be legally opened for public use. Contact landowner, tenant and county road department for access.



Controlling data is based upon the best maps and photographs available to us and upon a regular section of land consisting 640 acres.
 Approximate station lines were determined using the normal standards of care of a professional surveyor exercising in the state of Kansas. The section corners, when established, are precise section lines, were not necessarily surveyed, and the exact location of the drillsite location in the section is not guaranteed. Therefore, the operator accepting this service and accepting this site and all other services relating thereto agree to hold Central Kansas Oilfield Services, Inc., its officers and employees harmless from all losses, costs and expenses and hold entities released from any liability from incidental or consequential damages.
 Elevations derived from National Geodetic Vertical Datum.

Date November 22, 2011