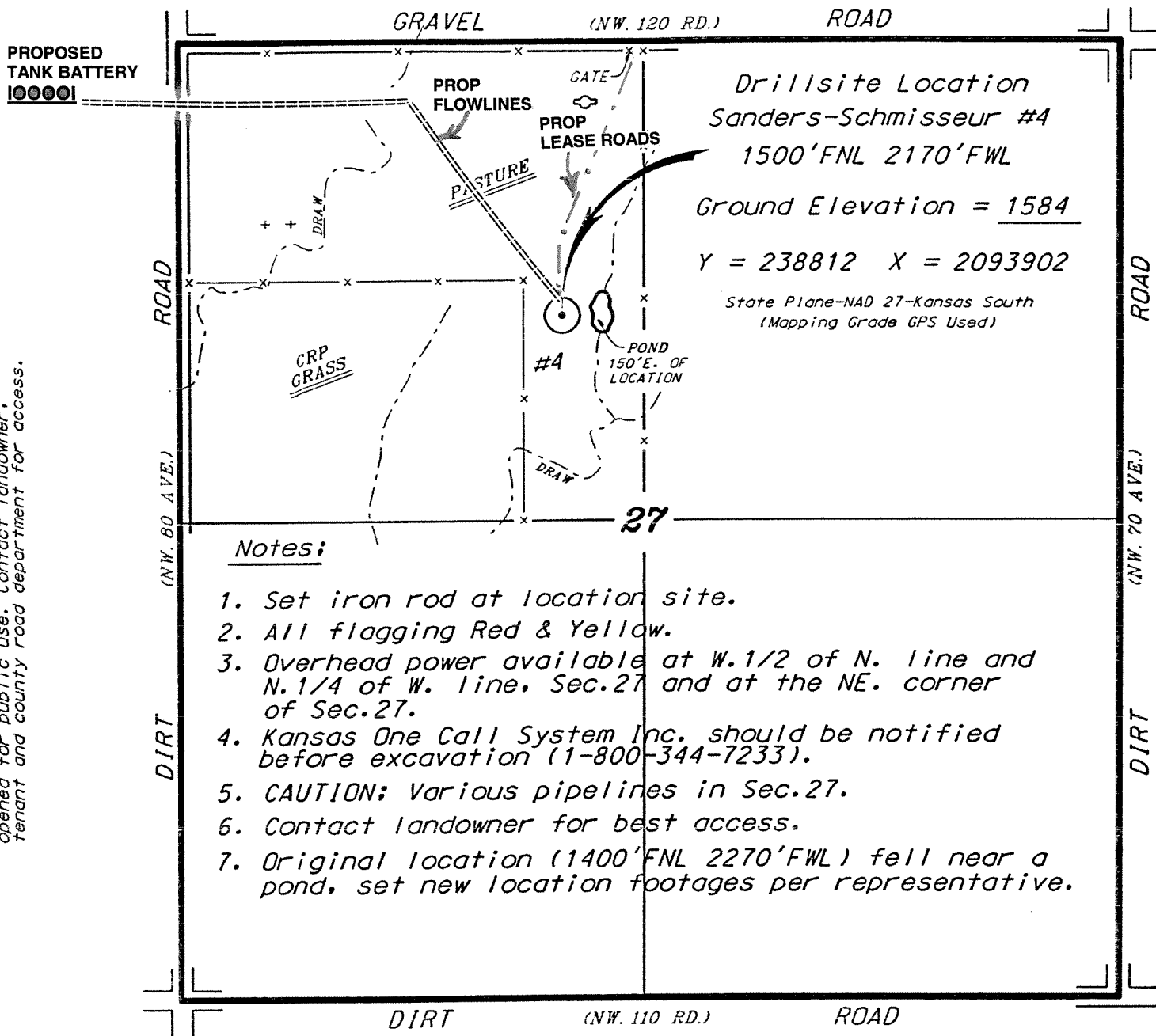


ATLAS OPERATING, LLC
 SANDERS-SCHMISSEUR LEASE
 NW. 1/4, SECTION 27, T31S, R8W
 HARPER COUNTY, KANSAS



Notes:

1. Set iron rod at location site.
2. All flagging Red & Yellow.
3. Overhead power available at W. 1/2 of N. line and N. 1/4 of W. line, Sec. 27 and at the NE. corner of Sec. 27.
4. Kansas One Call System Inc. should be notified before excavation (1-800-344-7233).
5. CAUTION; Various pipelines in Sec. 27.
6. Contact landowner for best access.
7. Original location (1400'FNL 2270'FWL) fell near a pond, set new location footages per representative.

This plat is per usage only and may not be legally opened for public use. Contact landowner, tenant and county road department for access.

