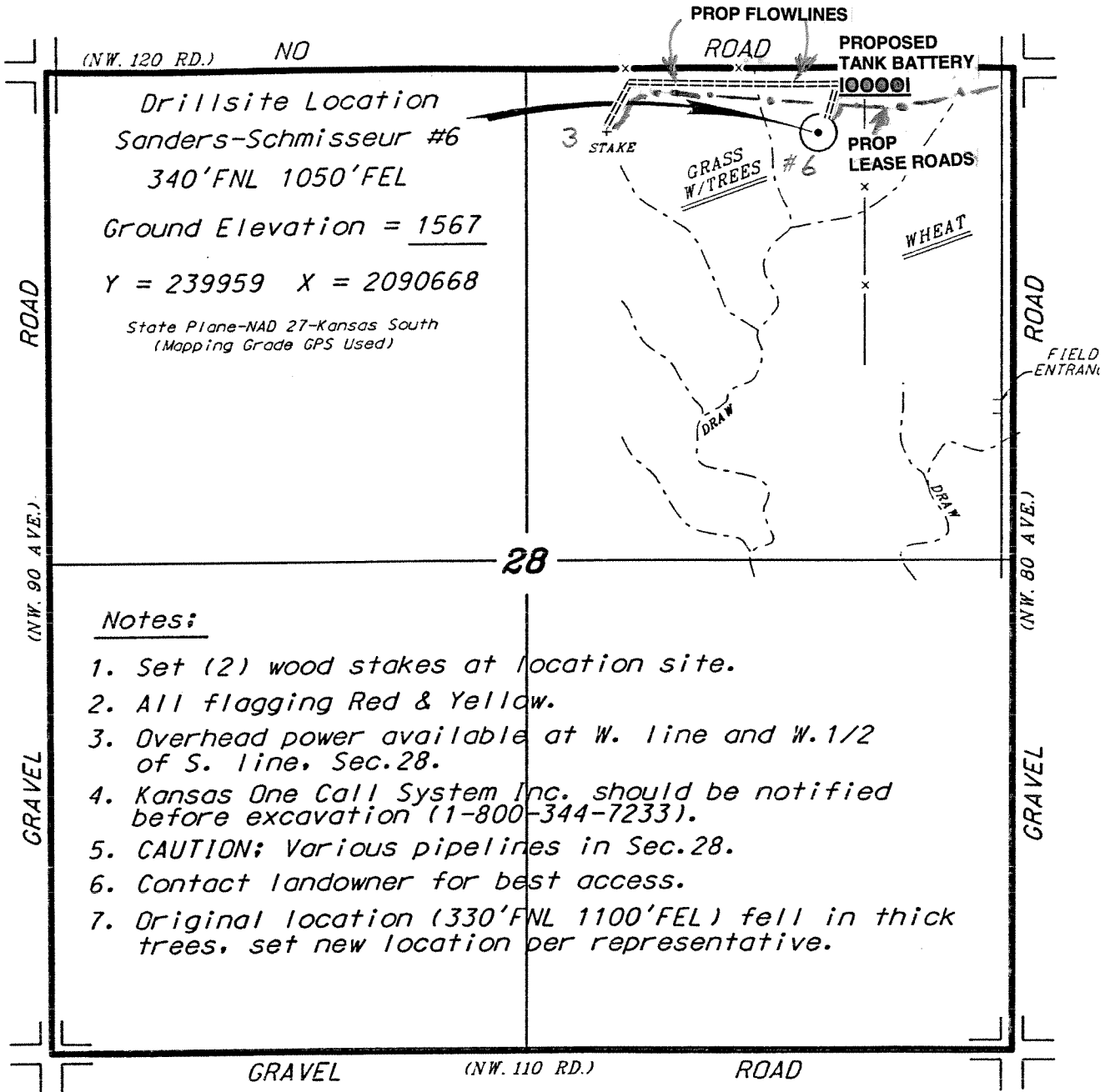


ATLAS OPERATING, LLC
 SANDERS-SCHMISSEUR LEASE
 NE. 1/4, SECTION 28, T31S, R8W
 HARPER COUNTY, KANSAS



* Ingress and egress to location as shown on this plat is per usage only and may not be legally opened for public use. Contact landowner, tenant and county road department for access.

