



**TRILOBITE TESTING, INC.**

# DRILL STEM TEST REPORT

Russell Oil Inc.

**Russell Dell Unit 1**

PO Box 8050  
Edmond OK, 73083

**35-10-34**

Job Ticket: 43248

**DST#: 3**

ATTN: Steve Angle

Test Start: 2011.08.21 @ 00:35:00

## GENERAL INFORMATION:

Formation: **Cherokee**

Deviated: No Whipstock: ft (KB)

Time Tool Opened: 02:49:00

Time Test Ended: 08:58:00

Test Type: Conventional Bottom Hole

Tester: Jace McKinney

Unit No: 28

**Interval: 4656.00 ft (KB) To 4741.00 ft (KB) (TVD)**

Reference Elevations: 3240.00 ft (KB)

Total Depth: 4741.00 ft (KB) (TVD)

3230.00 ft (CF)

Hole Diameter: 7.88 inches Hole Condition: Fair

KB to GR/CF: 10.00 ft

**Serial #: 8675**

**Inside**

Press @ Run Depth: 219.26 psig @ 4657.00 ft (KB)

Capacity: 8000.00 psig

Start Date: 2011.08.21

End Date:

2011.08.21

Last Calib.:

2011.08.21

Start Time: 00:35:01

End Time:

08:58:00

Time On Btm:

2011.08.21 @ 02:48:45

Time Off Btm:

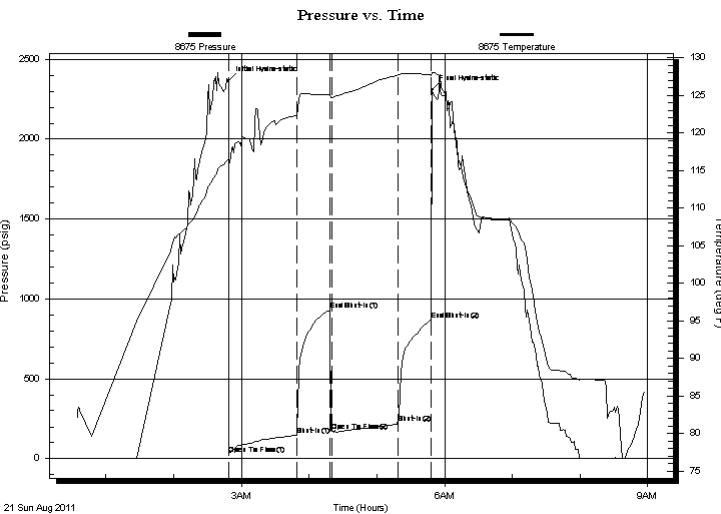
2011.08.21 @ 05:49:00

**TEST COMMENT:** B.O.B. in 54 min.

No return blow

Built to 7" blow

No return blow



## PRESSURE SUMMARY

Time (Min.)	Pressure (psig)	Temp (deg F)	Annotation
0	2364.62	116.50	Initial Hydro-static
1	29.15	115.71	Open To Flow (1)
60	146.10	122.33	Shut-In(1)
90	931.19	125.05	End Shut-In(1)
92	170.89	124.72	Open To Flow (2)
150	219.26	127.67	Shut-In(2)
180	870.69	127.69	End Shut-In(2)
181	2310.10	128.00	Final Hydro-static

## Recovery

Length (ft)	Description	Volume (bbl)
123.00	gcomw 10%G 20%O 20%M 50%W	0.60
122.00	ocgmw 10%O 20%G 30%M 40%W	1.71
183.00	gcw om 10%G 20%W 30%O 40%M	2.57

## Gas Rates

	Choke (inches)	Pressure (psig)	Gas Rate (Mcf/d)



**TRILOBITE  
TESTING, INC.**

# DRILL STEM TEST REPORT

**FLUID SUMMARY**

Russell Oil Inc.

**Russell Dell Unit 1**

PO Box 8050  
Edmond OK, 73083

**35-10-34**

Job Ticket: 43248

**DST#: 3**

ATTN: Steve Angle

Test Start: 2011.08.21 @ 00:35:00

## Mud and Cushion Information

Mud Type: Gel Chem

Cushion Type:

Oil API:

deg API

Mud Weight: 9.00 lb/gal

Cushion Length:

ft

Water Salinity:

ppm

Viscosity: 55.00 sec/qt

Cushion Volume:

bbbl

Water Loss: 9.19 in<sup>3</sup>

Gas Cushion Type:

Resistivity: 0.00 ohm.m

Gas Cushion Pressure:

psig

Salinity: 6000.00 ppm

Filter Cake: 2.00 inches

## Recovery Information

Recovery Table

Length ft	Description	Volume bbl
123.00	gcomw 10%G 20%O 20%M 50%W	0.605
122.00	ocgmw 10%O 20%G 30%M 40%W	1.711
183.00	gcw om 10%G 20%W 30%O 40%M	2.567

Total Length: 428.00 ft      Total Volume: 4.883 bbl

Num Fluid Samples: 0

Num Gas Bombs: 0

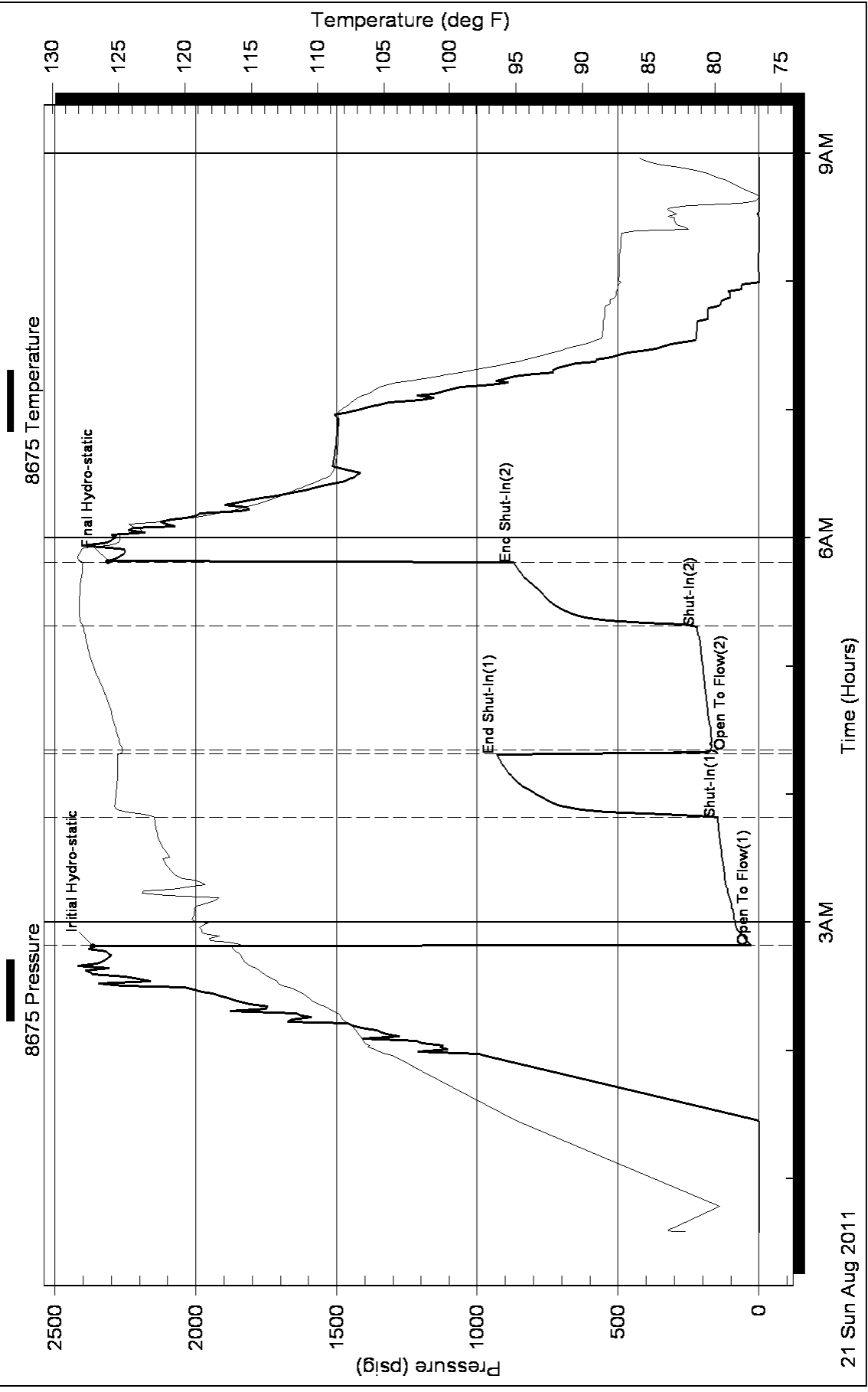
Serial #:

Laboratory Name:

Laboratory Location:

Recovery Comments: RW: .21 @ 74 F = 30,000

### Pressure vs. Time



21 Sun Aug 2011

9AM

6AM

3AM