

T34S, R7W, 6th P.M.

SGOMI

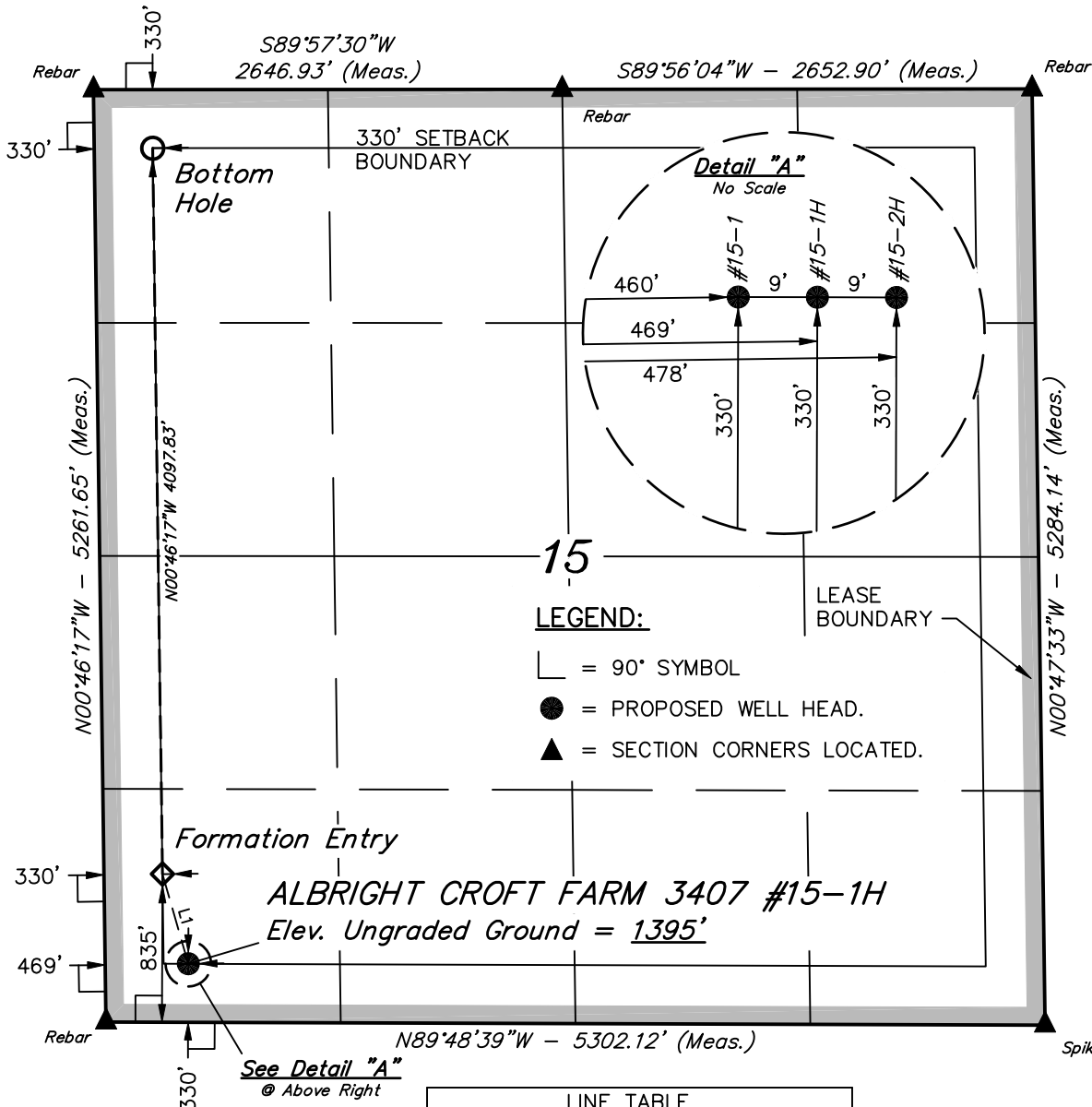
Well location, ALBRIGHT CROFT FARM 3407 #15-1H, located as shown in the SW 1/4 SW 1/4 of Section 15, T34S, R7W, 6th P.M., Harper County, Kansas.

BASIS OF ELEVATION

SPOT ELEVATION LOCATED AT THE NORTHEAST CORNER OF SECTION 22, T33S, R7W, 6th P.M. TAKEN FROM THE ANTHONY, QUADRANGLE, KANSAS, HARPER COUNTY, 7.5 MINUTE QUAD (TOPOGRAPHIC MAP) PUBLISHED BY THE UNITED STATES DEPARTMENT OF THE INTERIOR, GEOLOGICAL SURVEY. SAID ELEVATION IS MARKED AS BEING 1348 FEET.

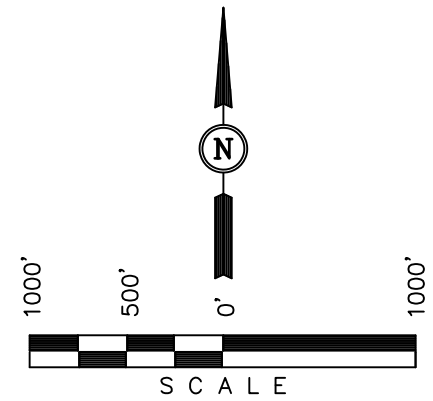
BASIS OF BEARINGS

BASIS OF BEARINGS IS A G.P.S. OBSERVATION.



LEGEND:

- └─┘ = 90° SYMBOL
- = PROPOSED WELL HEAD.
- ▲ = SECTION CORNERS LOCATED.



CERTIFICATE

THIS IS TO CERTIFY THAT THE ABOVE PLAT WAS PREPARED FROM FIELD NOTES OF ACTUAL SURVEYS MADE BY ME OR UNDER MY SUPERVISION AND THAT THE SAME ARE TRUE AND CORRECT TO THE BEST OF MY KNOWLEDGE AND BELIEF.

JOHANNES
 REGISTERED LAND SURVEYOR
 REGISTRATION NO. 1386
 STATE OF KANSAS
 10-11-11

REVISED: 10-18-11

UINTAH ENGINEERING & LAND SURVEYING		
85 SOUTH 200 EAST - VERNAL, UTAH 84078		
(435) 789-1017		
SCALE 1" = 1000'	DATE SURVEYED: 10-05-11	DATE DRAWN: 10-11-11
PARTY L.S. K.H. C.C.		REFERENCES G.L.O. PLAT
WEATHER COOL		FILE SGOMI

LINE TABLE		
LINE	BEARING	LENGTH
L1	N16°05'09"W	526.07'

NAD 83 (TARGET BOTTOM HOLE)	NAD 83 (FORMATION ENTRY)	NAD 83 (#15-1H SURFACE LOCATION)
LATITUDE = 37°05'35.76" (37.093268)	LATITUDE = 37°04'55.25" (37.082014)	LATITUDE = 37°04'50.25" (37.080626)
LONGITUDE = 98°04'26.05" (98.073902)	LONGITUDE = 98°04'25.39" (98.073719)	LONGITUDE = 98°04'23.59" (98.073220)
NAD 83 (TARGET BOTTOM HOLE)	NAD 27 (FORMATION ENTRY)	NAD 27 (#15-1H SURFACE LOCATION)
LATITUDE = 37°05'35.68" (37.093244)	LATITUDE = 37°04'55.16" (37.081990)	LATITUDE = 37°04'50.17" (37.080601)
LONGITUDE = 98°04'24.82" (98.073561)	LONGITUDE = 98°04'24.16" (98.073378)	LONGITUDE = 98°04'22.36" (98.072879)