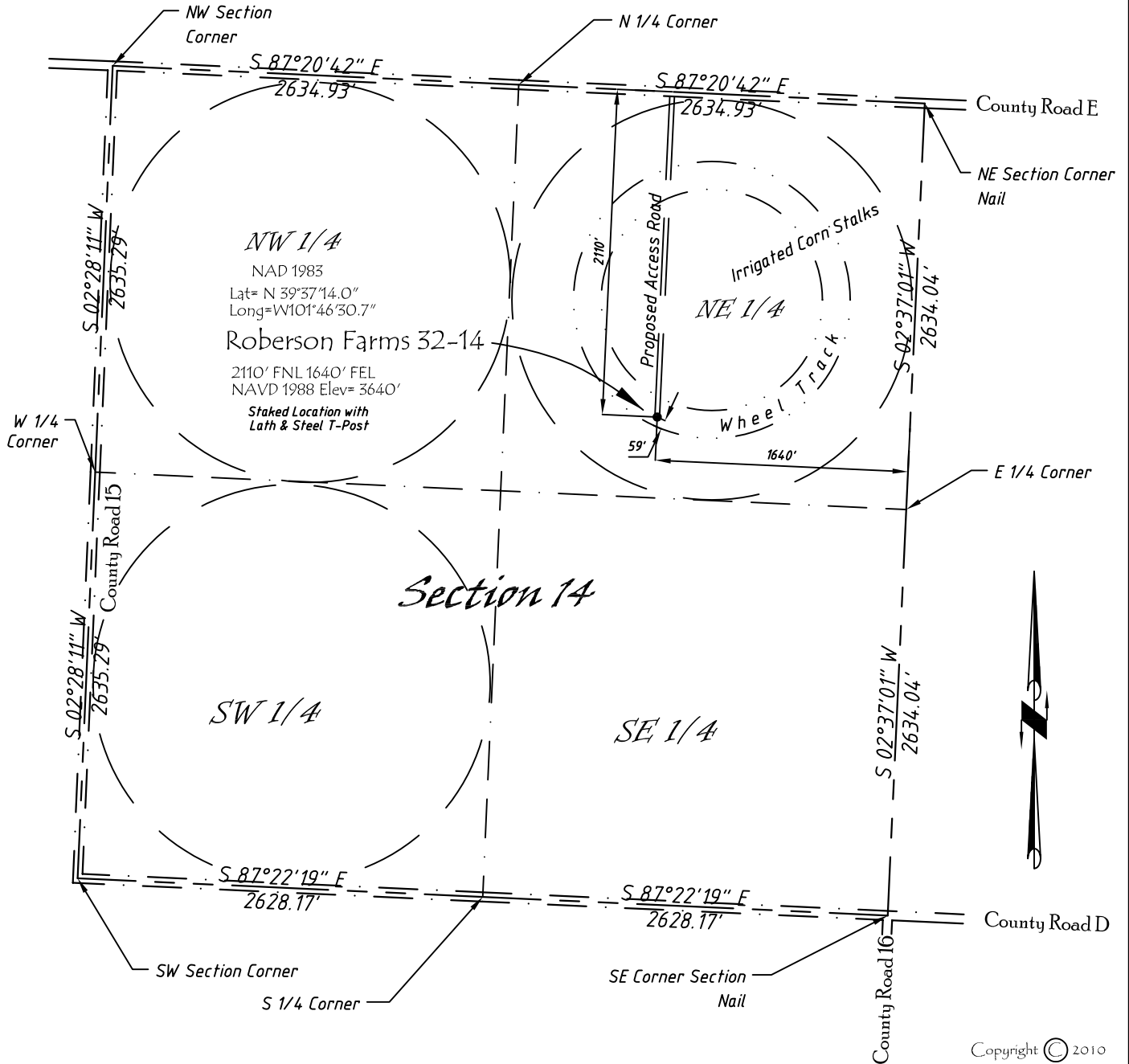


Well Location Map

Roberson Farms 32-14

SW 1/4, NE 1/4, Section 14, T5S, R40W, 6th P.M. Cheyenne County, Kansas
 2110' FNL - 1640' FEL Elev=3640'



Copyright © 2010

Directions:

From the Intersection of County Road 15 & Hwy 36 @ St Francis, KS, Go S on County Rd 15 Approximately 9.5 miles, to County Road E then E 0.7 miles Then S 2110 feet to Staked location

This Drawing is for Construction Purposes Only

Noble Energy, Inc.		
DRAW GP	DATE 12/19/10	Section 14 T5S, R40W, 6th P.M. Cheyenne County, KS
FB B7+P15	EQ HijPro	
SCALE 1"=1000'	SHEET 1 of 1	PROJECT NO. 1570.138



402 Walnut
 Kanorado, KS
 785/399/2551