

# Tim Priest

Consulting Petroleum Geologist

Phone: 1-800-209-3242

Timpriest1@yahoo.com

## GEOLOGIST'S REPORT DRILLING TIME AND SAMPLE LOG

OPERATOR Shakespeare Oil Co.  
 LEASE Frey #2-9 ✓  
 FIELD Wildcat  
 LOCATION 2228' FNL, 1779' FEL  
 SEC. 9 TWP. 13s RGE. 32w  
 COUNTY Logan STATE Kansas

ELEVATION

KB 3009'  
 DF \_\_\_\_\_  
 GL 2999'  
 Measurements Are All  
 From: KB

CONTRACTOR Murfin Drilling Rig #14  
 COMM: \_\_\_\_\_ COMP: 10-23-07  
 RTD 4689 LOG TD: \_\_\_\_\_  
 SAMPLES SAVED FROM 3650' TO TD  
 DRILLING TIME KEPT FROM 3650' TO TD  
 SAMPLES EXAMINED FROM 3650' TO TD  
 GEOLOGICAL SUPERVISION FROM 3800' TO TD  
 MUD UP 3600' TYPE MUD Chemical  
 API # 15-109-20787

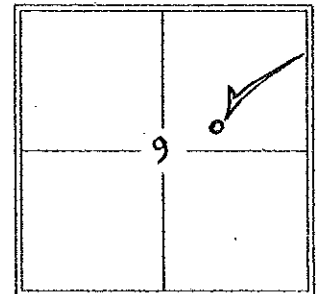
CASING RECORD

SURFACE 8 5/8" @ 225'  
 \_\_\_\_\_  
 PRODUCTION 5 1/2" @  
 \_\_\_\_\_

FORMATION	LOG		SAMPLE		STRUCT. COMP.
	TOP	DATUM	TOP	DATUM	
Anhydrite	2490+	519	NA		
B/Anhydrite	2512+	497	NA		
Topeka	3796-	787	3796-	787	
Heebner	3956-	947	3957-	948	
Lansing	3999-	990	3999-	990	
Muncie Creek	4145-	1136	4155-	1136	
Stark	4227-	1218	4227-	1218	
Fort Scott	4482-	1472	4481-	1472	
Cherokee Sh.	4512-	1503	4512-	1503	
Mississippi	4612-	1603	4612-	1603	

WELL LOG SURVEYS

Dual Induction  
 Neutron Density  
 MicroLog  
 Sonic



REFERENCE WELL FOR STRUCTURAL COMPARISON \_\_\_\_\_





Topoka  
3796-787

sh gxy = bed = red

LS cm = lt gxy, fa xtl, fos, li  
shky

LS cm = tan, fa xtl, fos = x fa  
ool, F = gd int xtl, pp, p, AS

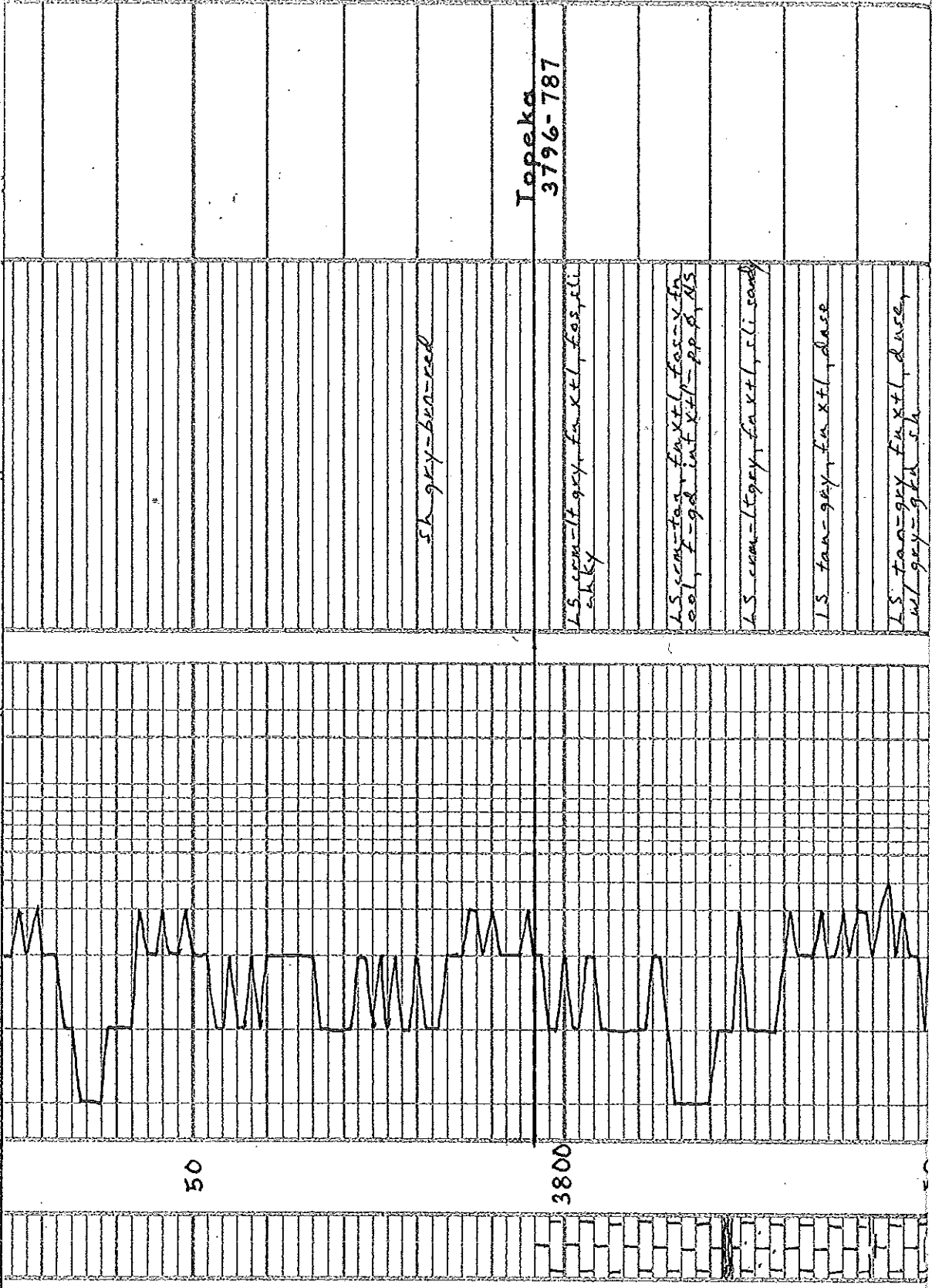
LS cm = lt gxy, fa xtl, li sand

LS tan = gxy, fa xtl, dase

LS tan = gxy, fa xtl, dase,  
wt gxy = gtd sh

50

3800





Lansing  
3999-990

Mud: 50 vif  
9.0 wt

DST #1 4010-4060  
 (30-30-45-60)  
 Rec: 700 MCW/215 of 01  
 FPS: 20-230#/2327347#  
 SIPs: 1189#/1201#  
 HSPs: 1965#/1908#  
 BHT: 117

Pipe: 3" rpp @ 4060 was  
 1.53" short to board  
 .04" Dey

LS cem-1t gcy, fa xtl, fos-sli  
 o.o., p int xtl-ppp, NS

LS cem-tan, fa xtl, dare  
 sh gcy-grn

LS cem-tan, fa xtl, fos-sli  
 o.o., p int xtl-ppp, NS

sh gcy-grn, seals

sh gcy-brn-grn

LS cem-fa xtl, fos-sli, ckky  
 p-f pp-v49-8, sptd, dk sta  
 S.S.EQ, v sl, o.dor, dull floor

LS cem-1t gcy, fa xtl, fos-sli  
 int xtl-ppp, sptd, dk sta  
 S.S.EQ, v sl, o.dor, dull floor

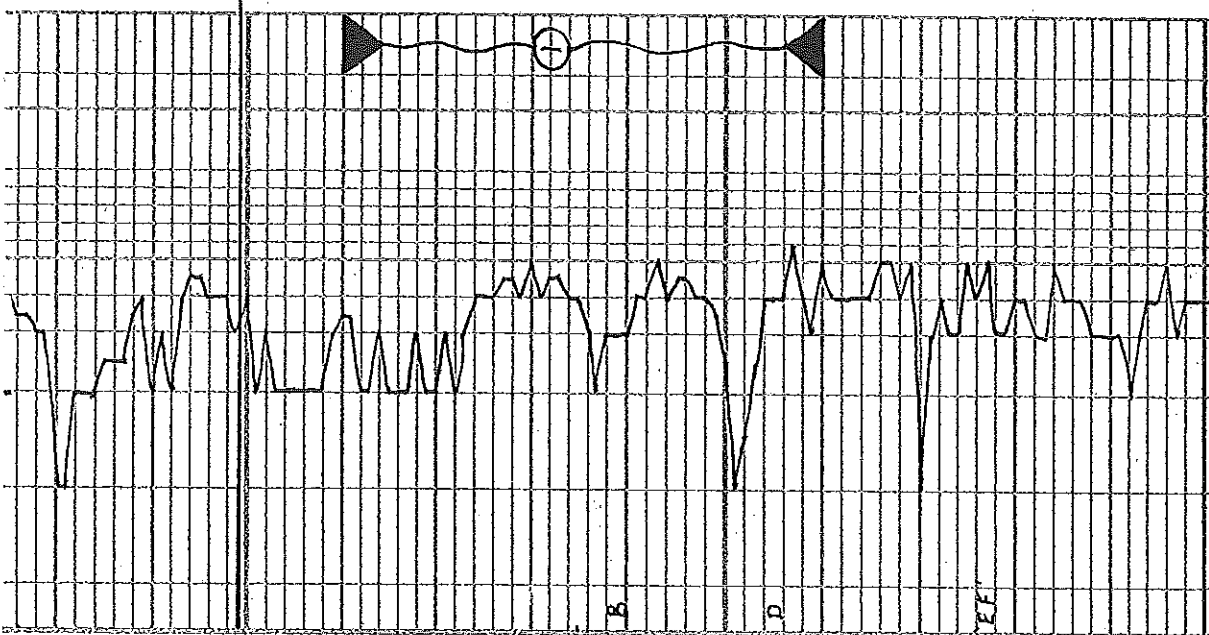
LS tan-gcy, fa xtl, dare

sh gcy-blk

LS cem-1t gcy, fa xtl, sli, ckky

sh gcy-grn

LS cem-tan, v fa xtl, ckky



4000

50

4100

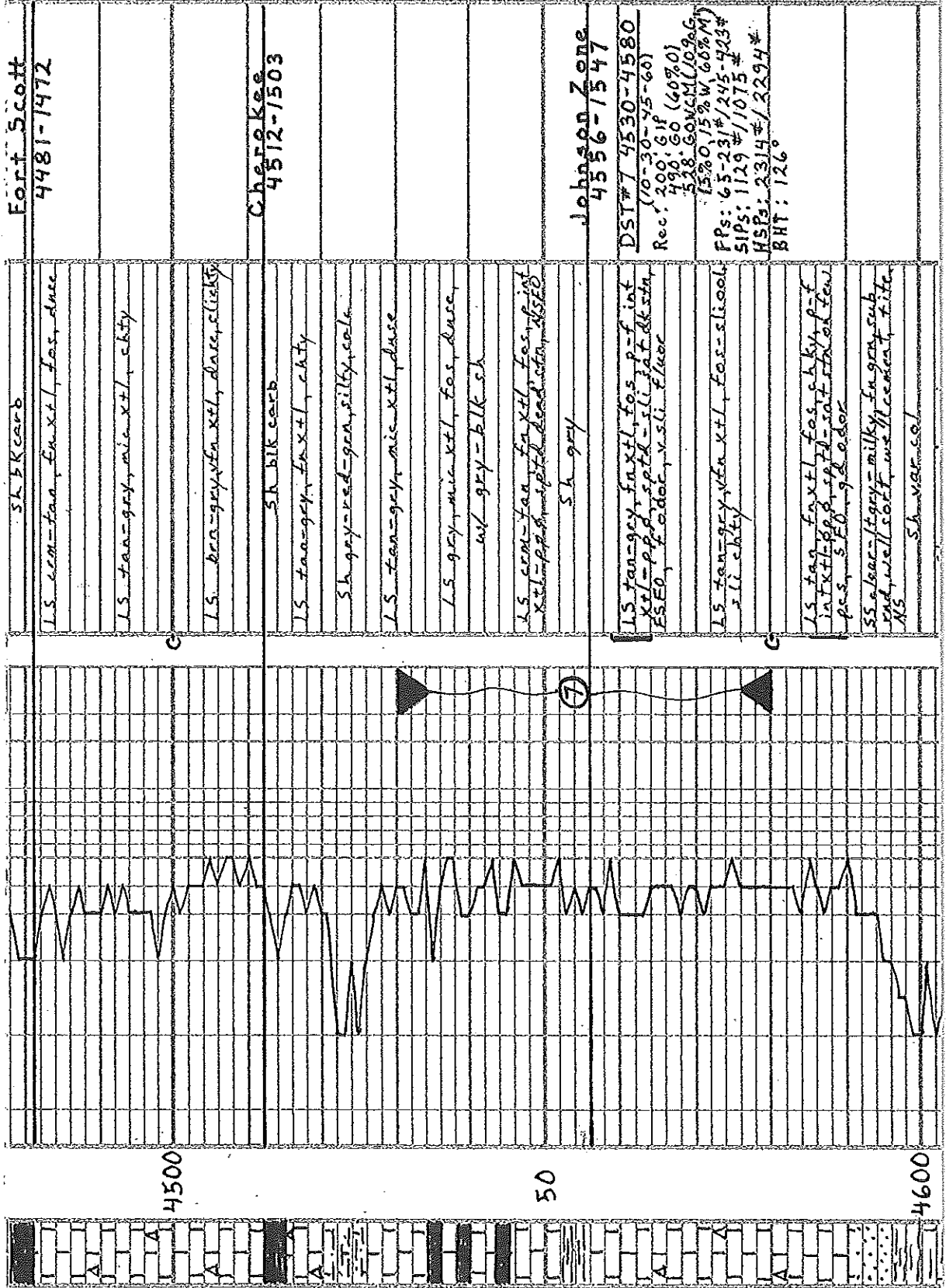












Fort Scott

4481-1472

5K carb

LS tan-fan, fn xtl, fos, duse

LS tan-gry, mic xtl, chky

LS brn-gry, fn xtl, duse, slicks

5K blk carb

LS tan-gry, fn xtl, chky

5K blk sh

LS tan-gry, mic xtl, duse

LS gry, mic xtl, fos, duse

5K blk sh

LS tan-fan, fn xtl, fos, duse, int xtl, ppt, spt, duse, chky, slicks

5K blk sh

LS tan-gry, fn xtl, fos, p-f int xtl, ppt, spt, duse, chky, slicks, FSE, f, d, v, sli, fluor

LS tan-gry, fn xtl, fos, sli, chky

LS tan, fn xtl, fos, chky, p-f int xtl, ppt, spt, duse, chky, slicks, FSE, f, d, v, sli, fluor

SS clear-taxy, milky, fa grs, sub, well sort, w/c cement, fine

5K var col

4500

50

4600

Johnson Zone  
4556-1547

DST # 7 4530-4580

(10-30-45-60)

Rec: 200, 618

528, 606, 610, 612, 614, 616, 618, 620, 622, 624, 626, 628, 630, 632, 634, 636, 638, 640, 642, 644, 646, 648, 650, 652, 654, 656, 658, 660, 662, 664, 666, 668, 670, 672, 674, 676, 678, 680, 682, 684, 686, 688, 690, 692, 694, 696, 698, 700, 702, 704, 706, 708, 710, 712, 714, 716, 718, 720, 722, 724, 726, 728, 730, 732, 734, 736, 738, 740, 742, 744, 746, 748, 750, 752, 754, 756, 758, 760, 762, 764, 766, 768, 770, 772, 774, 776, 778, 780, 782, 784, 786, 788, 790, 792, 794, 796, 798, 800, 802, 804, 806, 808, 810, 812, 814, 816, 818, 820, 822, 824, 826, 828, 830, 832, 834, 836, 838, 840, 842, 844, 846, 848, 850, 852, 854, 856, 858, 860, 862, 864, 866, 868, 870, 872, 874, 876, 878, 880, 882, 884, 886, 888, 890, 892, 894, 896, 898, 900, 902, 904, 906, 908, 910, 912, 914, 916, 918, 920, 922, 924, 926, 928, 930, 932, 934, 936, 938, 940, 942, 944, 946, 948, 950, 952, 954, 956, 958, 960, 962, 964, 966, 968, 970, 972, 974, 976, 978, 980, 982, 984, 986, 988, 990, 992, 994, 996, 998, 1000

FRS: 65-231#/145-423#

SIPs: 1129#/1075#

HSPs: 2314#/2294#

BHT: 126°

MISSISSIPPI  
4612-1603

LS tan-gray, fine xtl, dense  
sme. sandy, w/gy-brn sh

LS con-ly gray, v. fine xtl, chky.  
dise

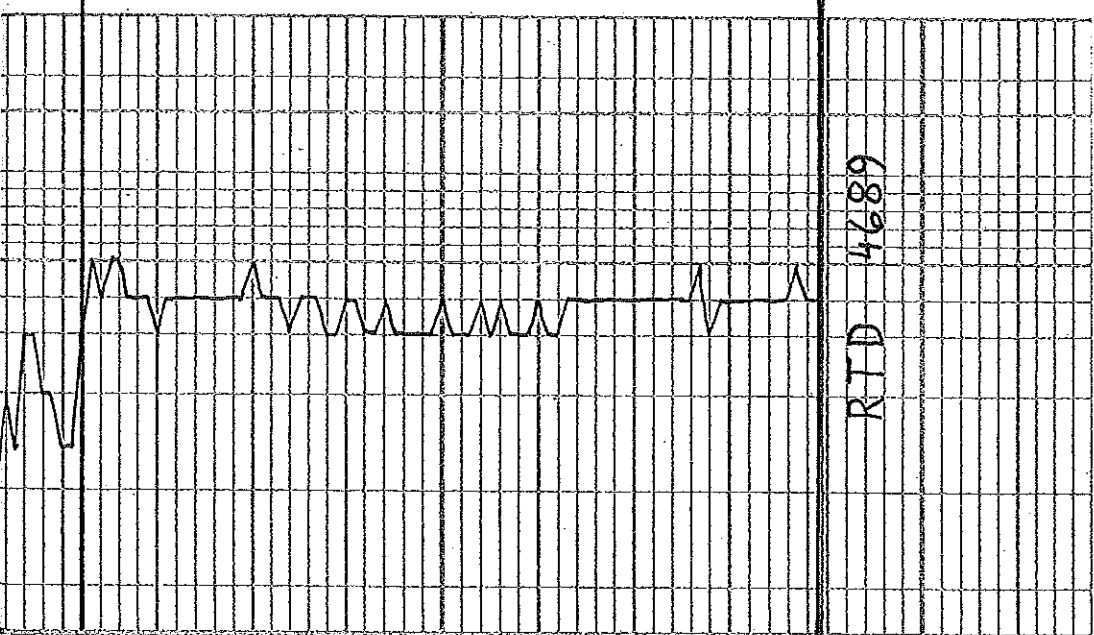
AA

LS con. v. fine xtl, sandy, chky

AA

LS con-ly gray, v. fine xtl, chky.  
sil chky

AA



50

RTD 4689

