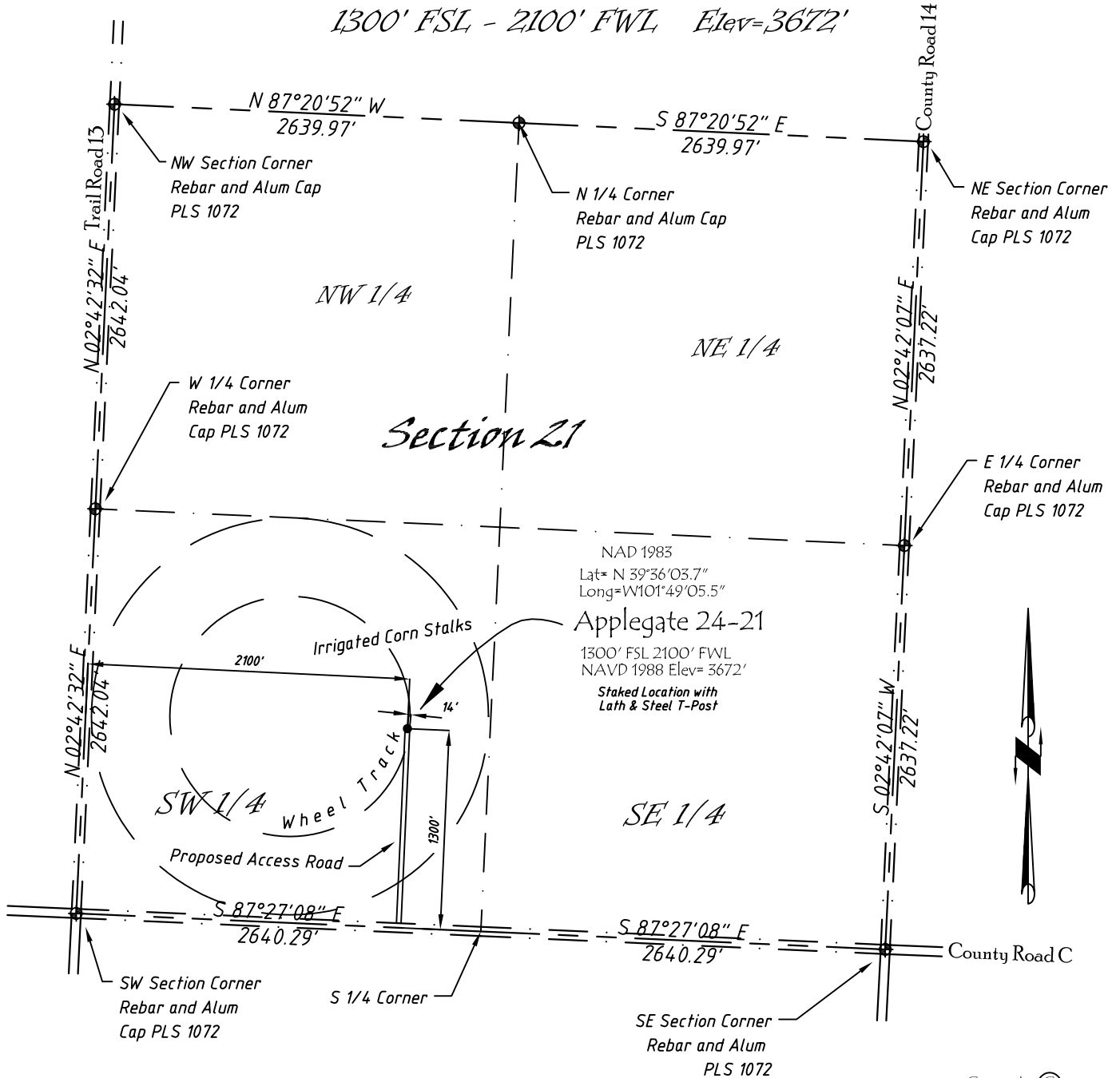


Well Location Map

# Applegate 24-21

SE 1/4, SW 1/4, Section 21, T5S, R40W, 6th P.M. Cheyenne County, Kansas  
 1300' FSL - 2100' FWL Elev=3672'



NAD 1983  
 Lat= N 39°36'03.7"  
 Long= W101°49'05.5"  
 Applegate 24-21  
 1300' FSL 2100' FWL  
 NAVD 1988 Elev= 3672'  
 Staked Location with  
 Lath & Steel T-Post

Copyright © 2010

Directions:

From the Intersection of County Road 14 (River Street) & Hwy 36 @ St. Francis, KS Go S on River St. turns into County Rd 14 Approximately 12 miles, to County Road C, then W 0.6 miles, Then N 1300' +/- to Staked location

*This Drawing is for Construction Purposes Only*

Noble Energy, Inc.		
<b>DRAWN</b> GP	<b>DATE</b> 12/19/10	Section 21 T5S, R40W, 6th P.M. Cheyenne County, KS
<b>FB</b> B7+P19	<b>EQ</b> HijPro	
<b>SCALE</b> 1"=1000'	<b>SHEET</b> 1 of 1	<b>PROJECT NO.</b> 1570.161

