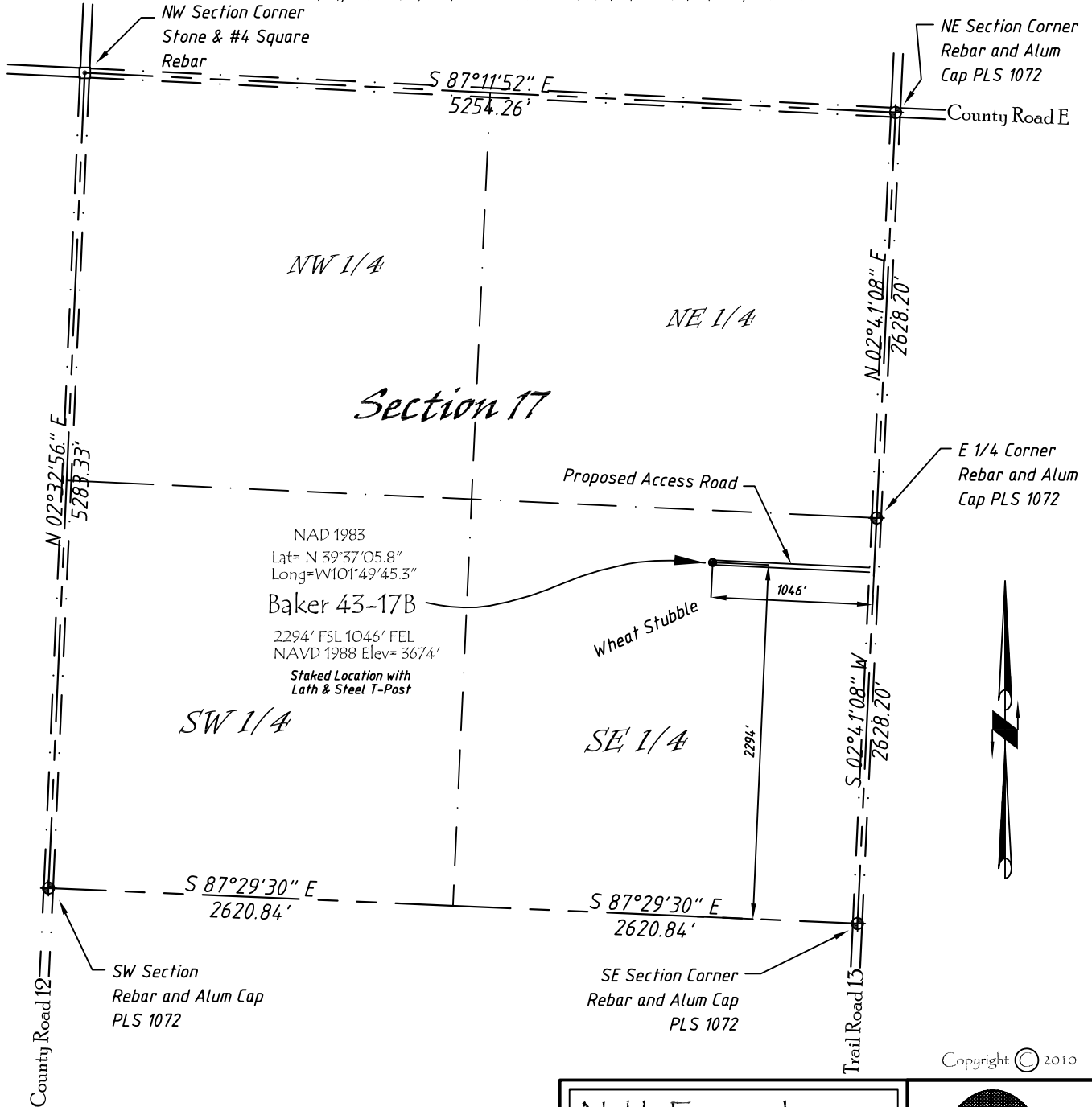


Well Location Map

# Baker 43-17B

NE 1/4, SE 1/4, Section 17, T5S, R40W, 6th P.M. Cheyenne County, Kansas  
 2294' FSL - 1046' FEL Elev=3674'



Copyright © 2010

Directions:

From the Intersection of County Road 14 (River Street) & Hwy 36 @  
 St. Francis, KS Go S on River St. turns into County Rd 14 Approximately  
 10 miles to County Road E, Then West 1 mile to Trail Road 13, Then  
 S 0.6 Miles, Then W 1046' +/- to Staked location

*This Drawing is for Construction Purposes Only*

Noble Energy, Inc.		
<b>DRAWN</b> GP	<b>DATE</b> 12/19/10	Section 17 T5S, R40W, 6th P.M. Cheyenne County, KS
<b>FB</b> B7+P17	<b>EQ</b> HjPro	
<b>SCALE</b> 1"=1000'	<b>SHEET</b> 1 of 1	<b>PROJECT NO.</b> 1570.152

