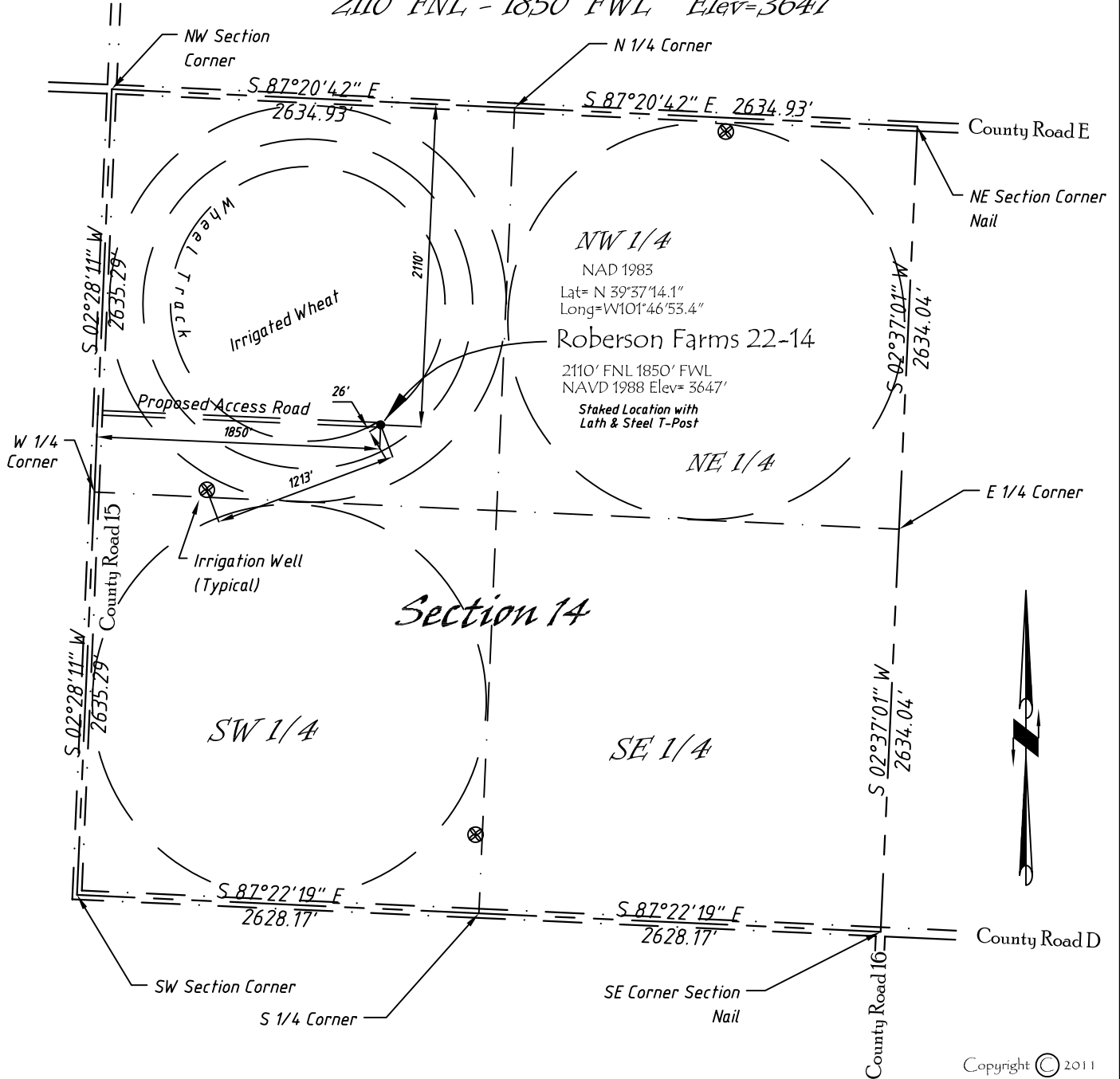


Well Location Map

Roberson Farms 22-14

SE 1/4, NW 1/4, Section 14, T5S, R40W, 6th P.M. Cheyenne County, Kansas
 2110' FNL - 1850' FWL Elev=3647'



Copyright © 2011

Directions:

From the Intersection of County Road 15 & Hwy 36 @ St Francis, KS, Go S on County Rd 15 Approximately 9.9 miles then E 1850 feet to Staked location.

This Drawing is for Construction Purposes Only

Noble Energy, Inc.		
DRAWN GP	DATE 1/3/11	Section 14
FB B7+P14	EQ HijPro	T5S, R40W, 6th P.M. Cheyenne County, KS
SCALE 1"=1000'	SHEET 1 of 1	PROJECT NO. 1570.133



402 Walnut
 Kanorado, KS
 785/399/2557