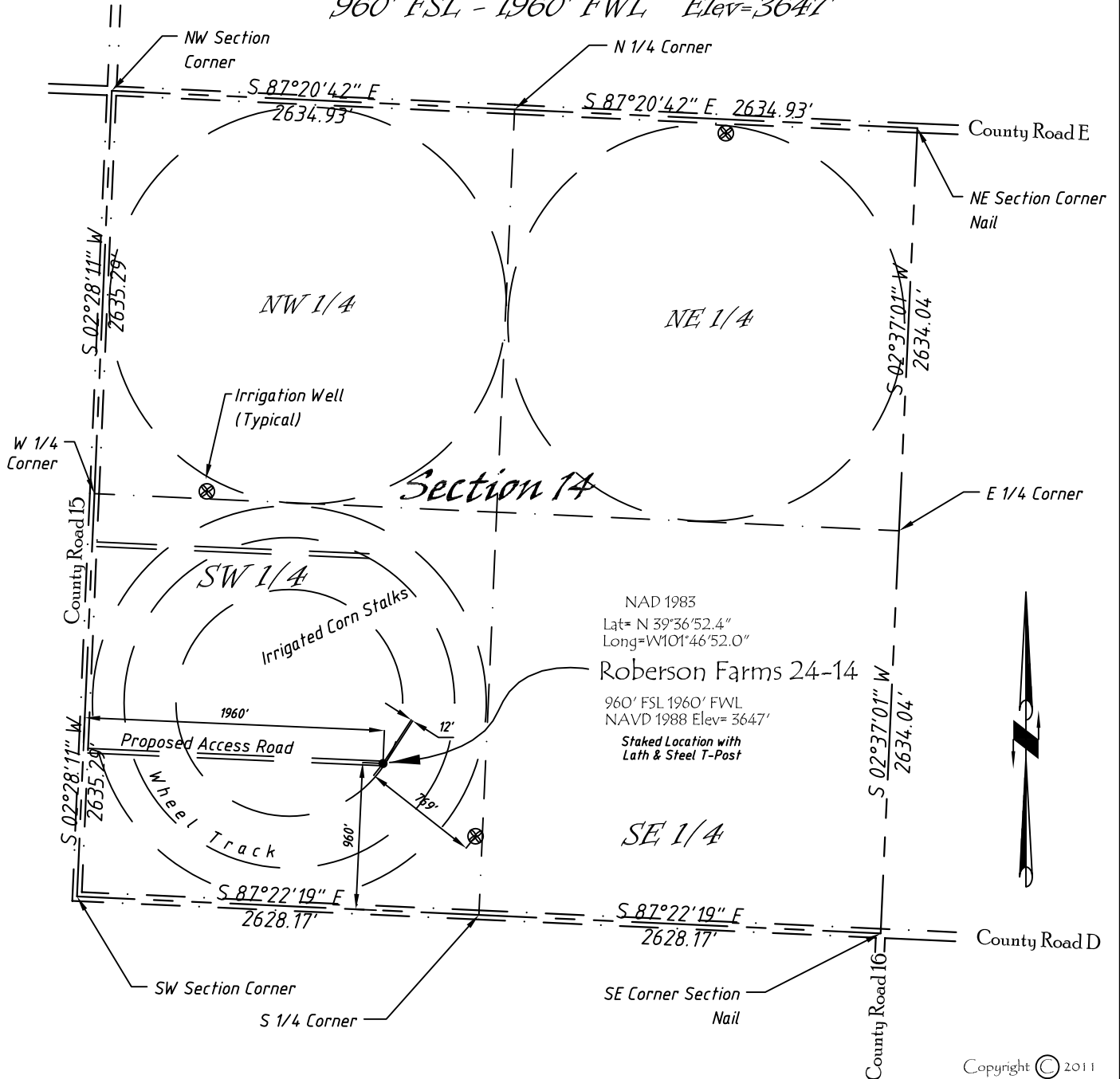


Well Location Map

Roberson Farms 24-14

SE 1/4, SW 1/4, Section 14, T5S, R40W, 6th P.M. Cheyenne County, Kansas
 960' FSL - 1960' FWL Elev=3647'



NAD 1983
 Lat= N 39°36'52.4"
 Long=W101°46'52.0"
 Roberson Farms 24-14
 960' FSL 1960' FWL
 NAVD 1988 Elev= 3647'
 Staked Location with
 Lath & Steel T-Post



Copyright © 2011

Directions:

From the Intersection of County Road 15 & Hwy 36 @ St Francis, KS, Go S on County Rd 15 Approximately 10.4 miles then E 1960 feet to Staked location.

This Drawing is for Construction Purposes Only

Noble Energy, Inc.		
DRAW GP	DATE 1/6/11	Section 14
FB B7+P15	EQ HijPro	T5S, R40W, 6th P.M. Cheyenne County, KS
SCALE 1"=1000'	SHEET 1 of 1	PROJECT NO. 1570.136

North
Winds
Surveys, Inc.

402 Walnut
Kanorado, KS
785/399/2551