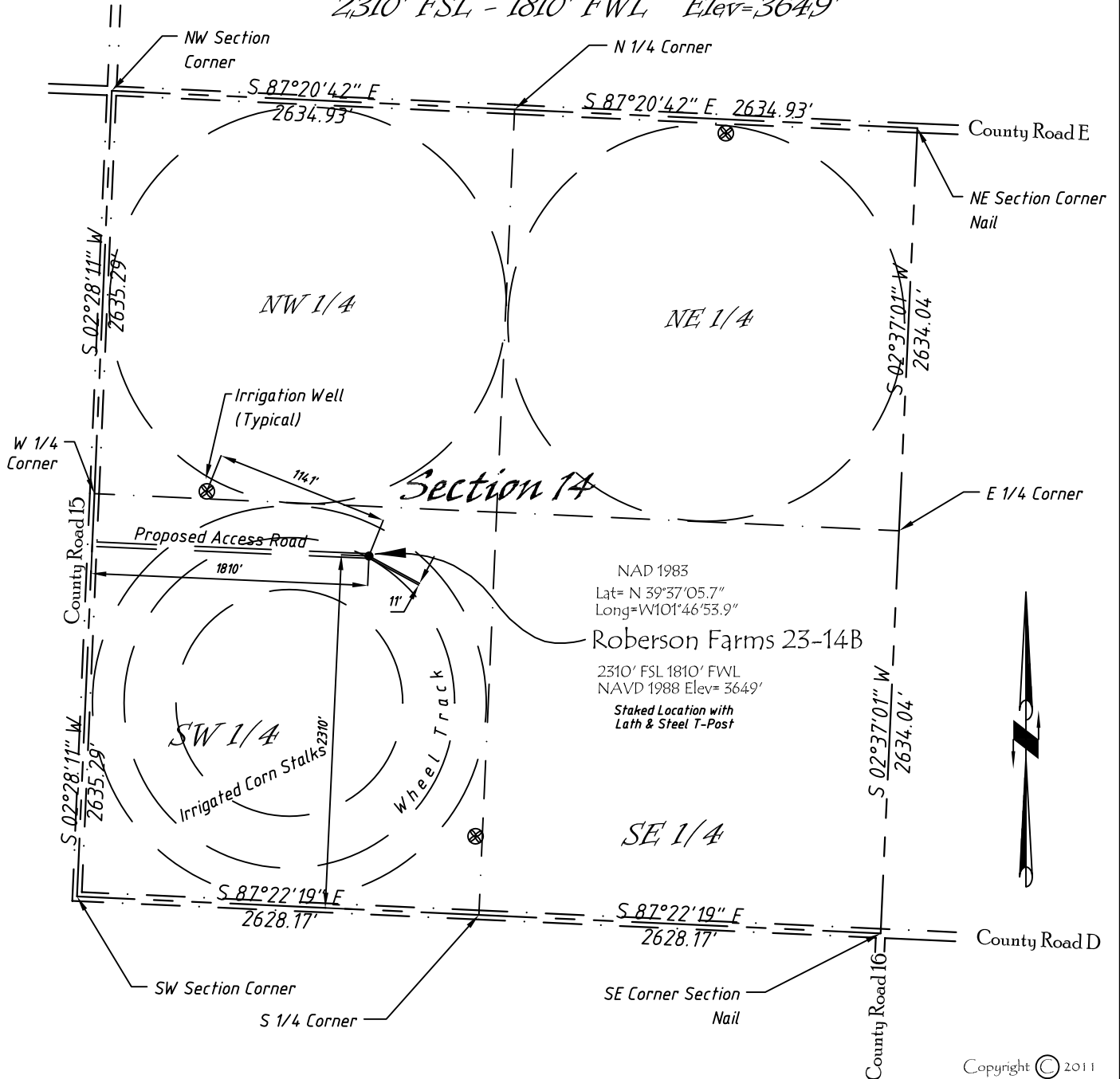


Well Location Map

# Roberson Farms 23-14B

NE 1/4, SW 1/4, Section 14, T5S, R40W, 6th P.M. Cheyenne County, Kansas  
 2310' FSL - 1810' FWL Elev=3649'



Copyright © 2011

Directions:

From the Intersection of County Road 15 & Hwy 36 @ St Francis, KS, Go S on County Rd 15 Approximately 10.1 miles then E 1810 feet to Staked location.

*This Drawing is for Construction Purposes Only*

Noble Energy, Inc.		
<b>DRAWN</b> GP	<b>DATE</b> 1/3/11	Section 14
<b>FB</b> B7+P14	<b>EQ</b> HjPro	T5S, R40W, 6th P.M. Cheyenne County, KS
<b>SCALE</b> 1"=1000'	<b>SHEET</b> 1 of 1	<b>PROJECT NO.</b> 1570.135

