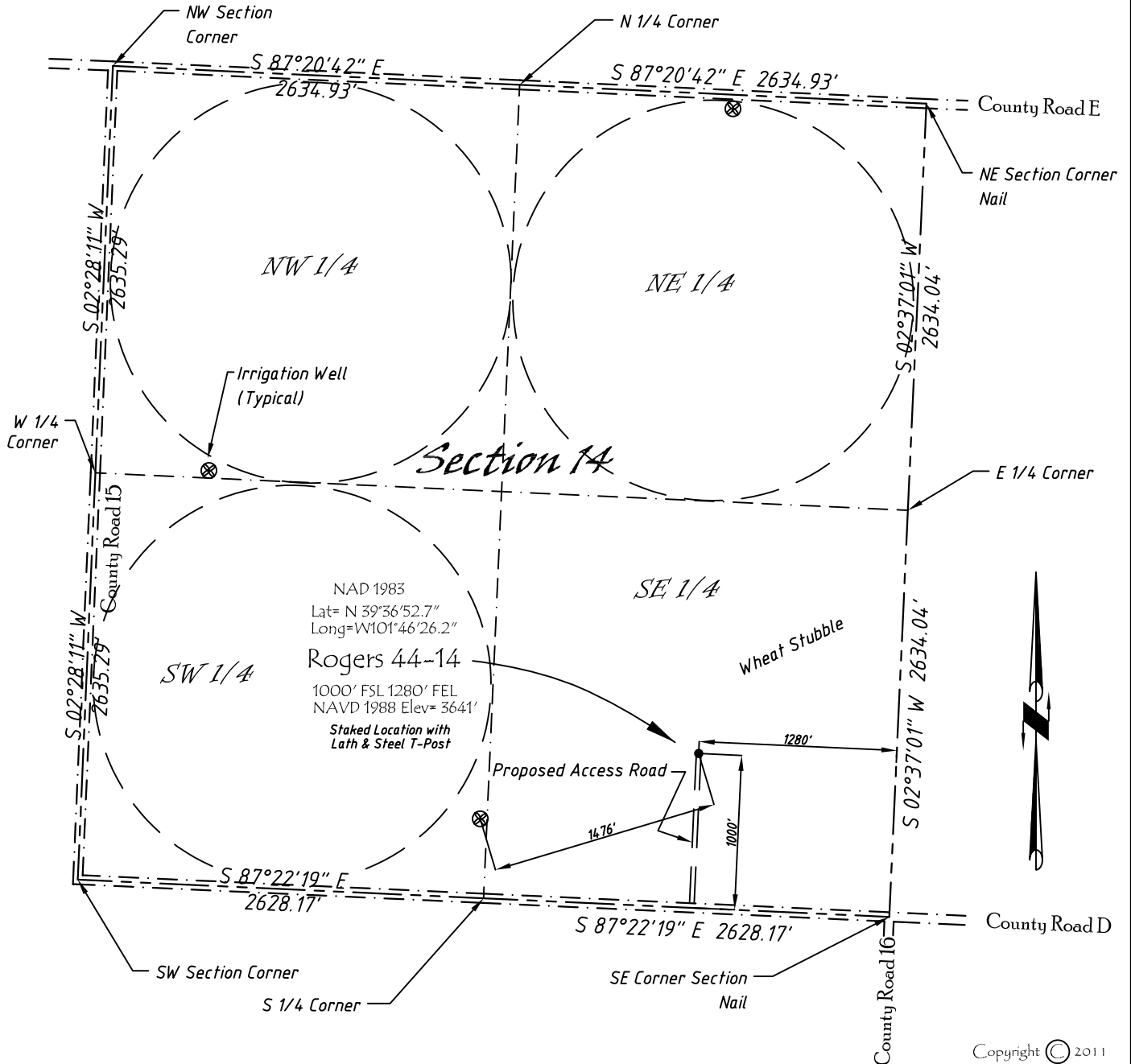


Well Location Map

Rogers 44-14

SE 1/4, SE 1/4, Section 14, T5S, R40W, 6th P.M. Cheyenne County, Kansas
 1000' FSL - 1280' FEL Elev=3641'



Copyright © 2011

Directions:

From the Intersection of County Road 15 & Hwy 36 @ St Francis, KS, Go S on County Rd 15 Approximately 10.5 miles, to County Road D then E 0.75 miles Then N 1000 feet to Staked location.

This Drawing is for Construction Purposes Only

Noble Energy, Inc.		
DRAWN GP	DATE 1/11/11	Section 14
FB B7+P16	EQ HijPro	T5S, R40W, 6th P.M. Cheyenne County, KS
SCALE 1"=1000'	SHEET 1 of 1	PROJECT NO. 1570.142

North
Winds
Surveys, Inc.

402 Walnut
Kanorado, KS
785 / 399 / 2551