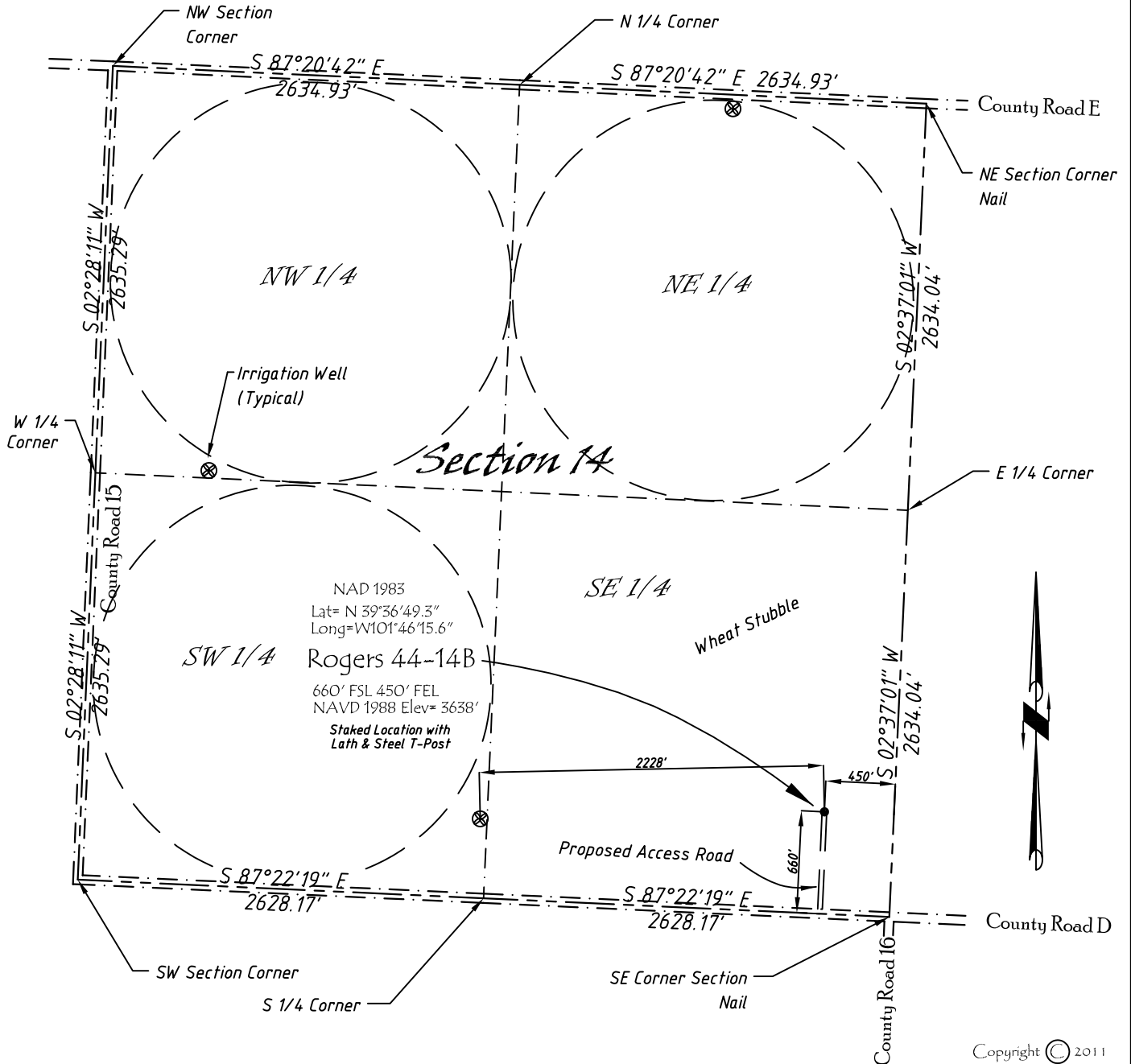


Well Location Map

Rogers 44-14B

SE 1/4, SE 1/4, Section 14, T5S, R40W, 6th P.M. Cheyenne County, Kansas
 660' FSL - 450' FEL Elev=3638'



NAD 1983
 Lat= N 39°36'49.3"
 Long=W101°46'15.6"
Rogers 44-14B
 660' FSL 450' FEL
 NAVD 1988 Elev= 3638'
 Staked Location with
 Lath & Steel T-Post

Copyright © 2011

Directions:

From the Intersection of County Road 15 & Hwy 36 @ St Francis, KS, Go S on County Rd 15 Approximately 10.5 miles, to County Road D then E 0.9 miles Then N 660 feet to Staked location.

This Drawing is for Construction Purposes Only

Noble Energy, Inc.		
DRAWN GP	DATE 1/11/11	Section 14
FB B74 P16	EQ HijPro	T5S, R40W, 6th P.M. Cheyenne County, KS
SCALE 1"=1000'	SHEET 1 of 1	PROJECT NO. 1570.143

North
Winds
Surveys, Inc.

402 Walnut
Kanorado, KS
785/399/2551