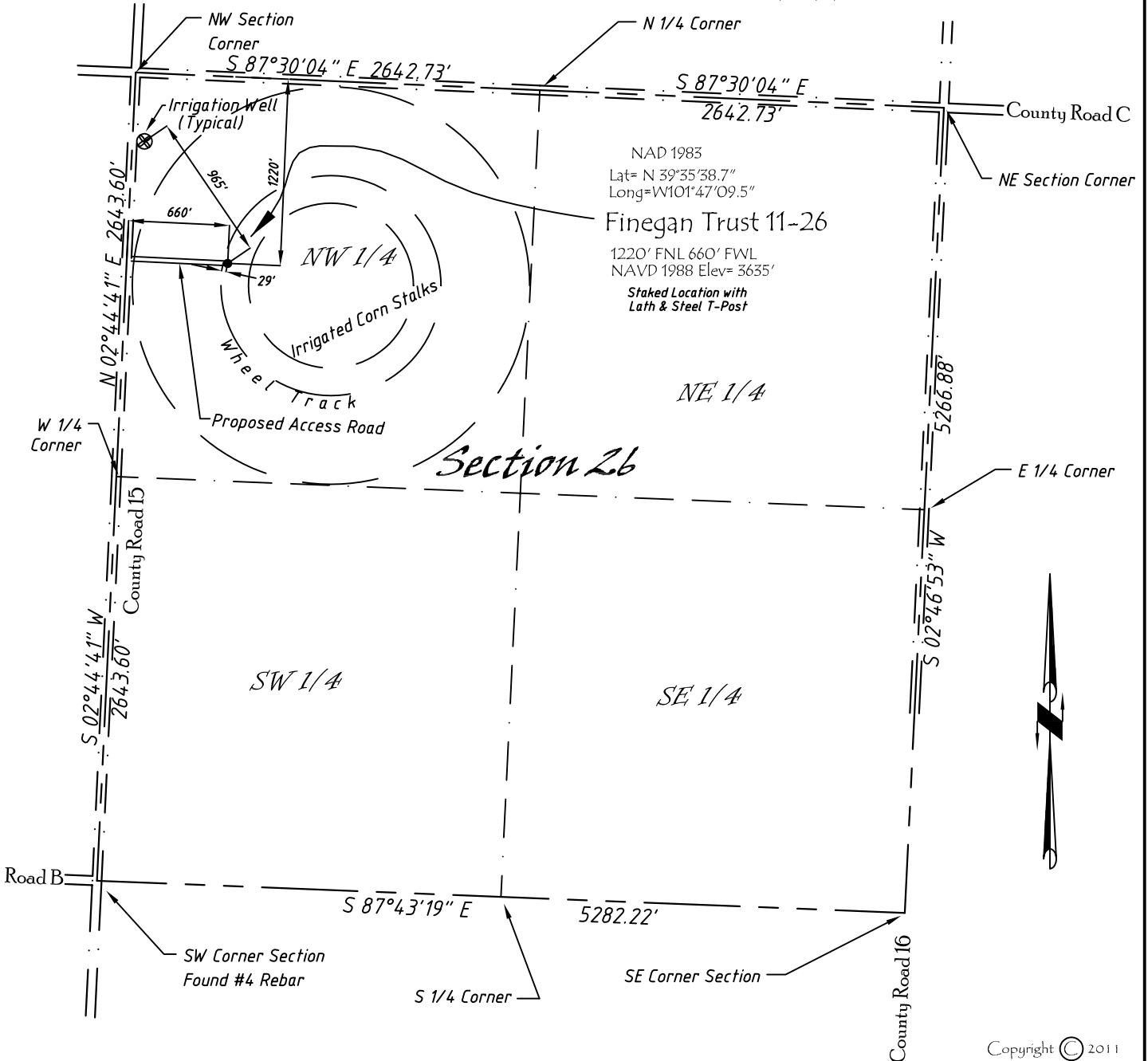


Well Location Map

Finegan Trust 11-26

NW 1/4, NW 1/4, Section 26, T5S, R40W, 6th P.M. Cheyenne County, Kansas
 1220' FNL - 660' FWL Elev=3635'



Copyright © 2011

Directions:

From the Intersection of County Road 15 & Hwy 36 @ St Francis, KS, Go S on County Rd 15 Approximately 11.7 miles, then E 660 feet to staked location.

This Drawing is for Construction Purposes Only

Noble Energy, Inc.		
DRAW GP	DATE 1/17/11	Section 26
FB B7+P22	EQ HiPro	T5S, R40W, 6th P.M. Cheyenne County, KS
SCALE 1"=1000'	SHEET 1 of 1	PROJECT NO. 1570.182

North
Winds
Surveys, Inc.

402 Walnut
Kanorado, KS
785/399/2551