



TRILOBITE TESTING, INC.

DRILL STEM TEST REPORT

Abercrombie Energy LLC

11-15s-15w Russell

10209 W Central
Ste 2
Wichita Ks 67212-4685
ATTN: Mark Galyon

Dietz 2-11

Job Ticket: 46013

DST#: 4

Test Start: 2011.12.07 @ 01:45:14

GENERAL INFORMATION:

Formation: **LKC "K"**

Deviated: No Whipstock: ft (KB)

Time Tool Opened: 04:02:39

Time Test Ended: 08:44:38

Test Type: Conventional Bottom Hole (Reset)

Tester: Ray Schwager

Unit No: 42

Interval: 3140.00 ft (KB) To 3162.00 ft (KB) (TVD)

Reference Elevations: 1750.00 ft (KB)

Total Depth: 3162.00 ft (KB) (TVD)

1740.00 ft (CF)

Hole Diameter: 7.85 inches Hole Condition: Fair

KB to GR/CF: 10.00 ft

Serial #: 6625 Inside

Press @ Run Depth: 65.49 psig @ 3141.00 ft (KB)

Capacity: 8000.00 psig

Start Date: 2011.12.07

End Date:

2011.12.07

Last Calib.: 2011.12.07

Start Time: 01:45:14

End Time:

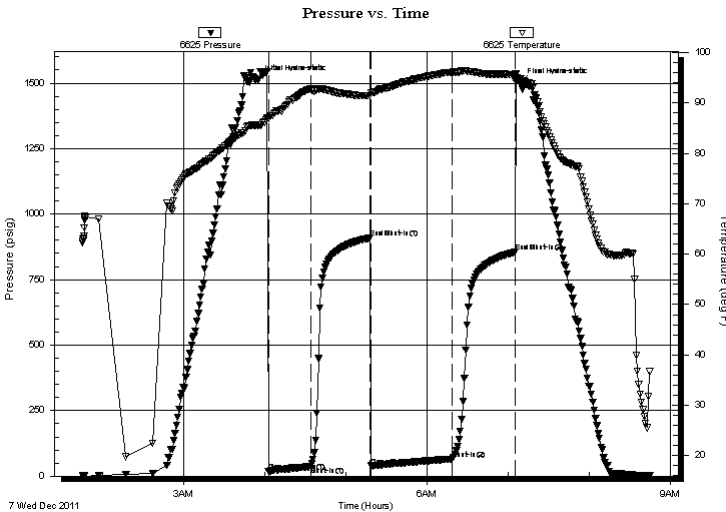
08:44:38

Time On Btm: 2011.12.07 @ 03:54:39

Time Off Btm: 2011.12.07 @ 07:09:08

TEST COMMENT: 30-IFP-w k bl 1/2"to 1 1/2"bl
45-ISIP-no bl
60-FFP-w k bl 1/2"to 1 1/2"bl
45-FSIP-no bl

PRESSURE SUMMARY



Time (Min.)	Pressure (psig)	Temp (deg F)	Annotation
0	1513.49	85.60	Initial Hydro-static
8	17.26	86.95	Open To Flow (1)
39	37.32	92.84	Shut-In(1)
83	909.25	91.43	End Shut-In(1)
84	39.10	91.96	Open To Flow (2)
144	65.49	96.08	Shut-In(2)
191	855.54	95.64	End Shut-In(2)
195	1501.87	94.83	Final Hydro-static

Recovery

Length (ft)	Description	Volume (bbl)
105.00	Water w/show of CO on top of fluid	1.47

* Recovery from multiple tests

Gas Rates

Choke (inches)	Pressure (psig)	Gas Rate (Mcf/d)



**TRILOBITE
TESTING, INC.**

DRILL STEM TEST REPORT

FLUID SUMMARY

Abercrombie Energy LLC

11-15s-15w Russell

10209 W Central
Ste 2
Wichita Ks 67212-4685
ATTN: Mark Galyon

Dietz 2-11

Job Ticket: 46013

DST#: 4

Test Start: 2011.12.07 @ 01:45:14

Mud and Cushion Information

Mud Type: Gel Chem

Cushion Type:

Oil API:

deg API

Mud Weight: 9.00 lb/gal

Cushion Length:

ft

Water Salinity:

60000 ppm

Viscosity: 54.00 sec/qt

Cushion Volume:

bbbl

Water Loss: 7.18 in³

Gas Cushion Type:

Resistivity: ohm.m

Gas Cushion Pressure:

psig

Salinity: 3800.00 ppm

Filter Cake: 1.00 inches

Recovery Information

Recovery Table

Length ft	Description	Volume bbl
105.00	Water w/show of CO on top of fluid	1.473

Total Length: 105.00 ft Total Volume: 1.473 bbl

Num Fluid Samples: 0

Num Gas Bombs: 0

Serial #:

Laboratory Name:

Laboratory Location:

Recovery Comments: RW .17@50F

Pressure vs. Time

