



TRILOBITE TESTING, INC.

DRILL STEM TEST REPORT

Abercrombie Energy LLC

11-15s-15w Russell

10209 W Central
Ste 2
Wichita Ks 67212-4685
ATTN: Mark Galyon

Dietz 2-11

Job Ticket: 46014

DST#: 5

Test Start: 2011.12.07 @ 21:15:06

GENERAL INFORMATION:

Formation: **Arbuckle**

Deviated: No Whipstock: ft (KB)

Time Tool Opened: 23:16:31

Time Test Ended: 04:23:00

Test Type: Conventional Bottom Hole (Reset)

Tester: Ray Schwager

Unit No: 42

Interval: 3187.00 ft (KB) To 3237.00 ft (KB) (TVD)

Reference Elevations: 1750.00 ft (KB)

Total Depth: 3237.00 ft (KB) (TVD)

1740.00 ft (CF)

Hole Diameter: 7.85 inches Hole Condition: Fair

KB to GR/CF: 10.00 ft

Serial #: 6625 Inside

Press @ Run Depth: 338.53 psig @ 3201.00 ft (KB)

Capacity: 8000.00 psig

Start Date: 2011.12.07

End Date:

2011.12.08

Last Calib.: 2011.12.08

Start Time: 21:15:06

End Time:

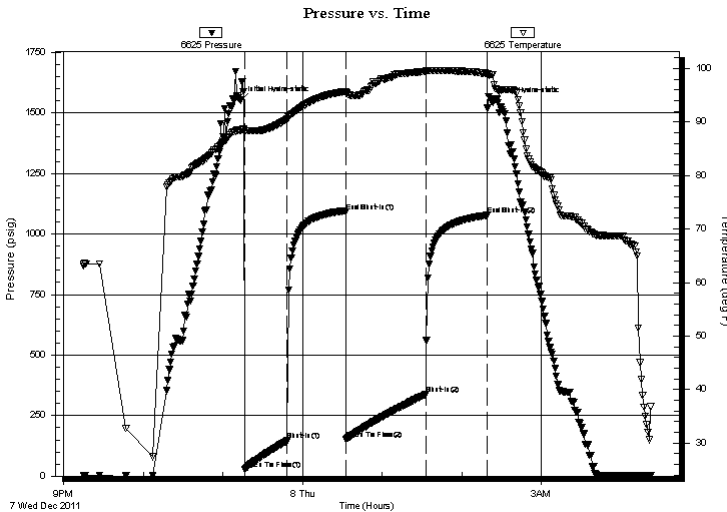
04:23:00

Time On Btm: 2011.12.07 @ 23:13:31

Time Off Btm: 2011.12.08 @ 02:23:00

TEST COMMENT: 30-IFP-w k to strg in 6min
45-ISIP-no bl
60-FFP-w k to strg in 30min
45-FSIP-no bl

PRESSURE SUMMARY



Time (Min.)	Pressure (psig)	Temp (deg F)	Annotation
0	1551.03	88.51	Initial Hydro-static
3	29.36	88.07	Open To Flow (1)
35	146.79	90.56	Shut-In(1)
79	1091.14	95.72	End Shut-In(1)
80	153.00	95.42	Open To Flow (2)
140	338.53	99.45	Shut-In(2)
186	1077.42	99.10	End Shut-In(2)
190	1546.42	98.92	Final Hydro-static

Recovery

Length (ft)	Description	Volume (bbl)
190.00	MW 20%M80%W	2.67
500.00	Water	7.01

* Recovery from multiple tests

Gas Rates

	Choke (inches)	Pressure (psig)	Gas Rate (Mcf/d)



**TRILOBITE
TESTING, INC.**

DRILL STEM TEST REPORT

FLUID SUMMARY

Abercrombie Energy LLC

11-15s-15w Russell

10209 W Central
Ste 2
Wichita Ks 67212-4685
ATTN: Mark Galyon

Dietz 2-11

Job Ticket: 46014

DST#: 5

Test Start: 2011.12.07 @ 21:15:06

Mud and Cushion Information

Mud Type: Gel Chem

Mud Weight: 9.00 lb/gal

Viscosity: 50.00 sec/qt

Water Loss: 7.79 in³

Resistivity: ohm.m

Salinity: 4000.00 ppm

Filter Cake: 1.00 inches

Cushion Type:

Cushion Length: ft

Cushion Volume: bbl

Gas Cushion Type:

Gas Cushion Pressure: psig

Oil API: deg API

Water Salinity: 26000 ppm

Recovery Information

Recovery Table

Length ft	Description	Volume bbl
190.00	MW 20%M80%W	2.665
500.00	Water	7.014

Total Length: 690.00 ft Total Volume: 9.679 bbl

Num Fluid Samples: 0

Num Gas Bombs: 0

Serial #:

Laboratory Name:

Laboratory Location:

Recovery Comments: RW .28@65F

