



**TRILOBITE  
TESTING, INC.**

# DRILL STEM TEST REPORT

Grand Mesa  
1700 N Waterfront PKWY  
BLDG 600 Wichita KS  
67202-5514  
ATTN: John Goldsmith

**16-16s-33w**  
**DBY 3-16**  
Job Ticket: 44342      **DST#: 3**  
Test Start: 2011.11.03 @ 21:15:00

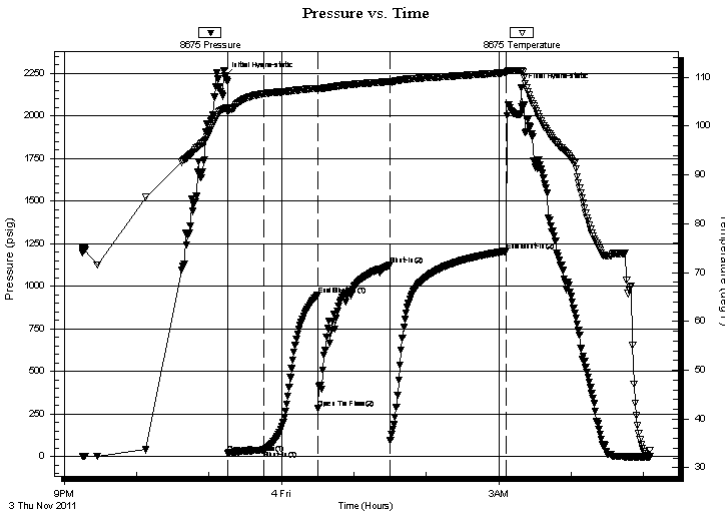
## GENERAL INFORMATION:

Formation: **Marmaton/Lenapah**  
Deviated: No Whipstock: ft (KB)  
Time Tool Opened: 23:15:30  
Time Test Ended: 05:05:15  
Interval: **4350.00 ft (KB) To 4415.00 ft (KB) (TVD)**  
Total Depth: 4415.00 ft (KB) (TVD)  
Hole Diameter: 7.88 inches Hole Condition: Fair  
Test Type: Conventional Bottom Hole (Reset)  
Tester: Jace McKinney  
Unit No: 46  
Reference Elevations: 3046.00 ft (KB)  
3041.00 ft (CF)  
KB to GR/CF: 5.00 ft

**Serial #: 8675      Inside**  
Press @ Run Depth: 1124.54 psig @ 4351.00 ft (KB)      Capacity: 8000.00 psig  
Start Date: 2011.11.03      End Date: 2011.11.04      Last Calib.: 2011.11.04  
Start Time: 21:15:01      End Time: 05:05:15      Time On Btm: 2011.11.03 @ 23:12:45  
Time Off Btm: 2011.11.04 @ 03:19:00

**TEST COMMENT:** Built to 6" blow  
Built to 1/2" return blow  
Built to 1" blow  
Bult to 1/4" return blow

## PRESSURE SUMMARY



Time (Min.)	Pressure (psig)	Temp (deg F)	Annotation
0	2232.72	103.58	Initial Hydro-static
3	21.00	102.92	Open To Flow (1)
33	38.15	106.61	Shut-In(1)
78	950.56	107.73	End Shut-In(1)
78	282.07	107.35	Open To Flow (2)
137	1124.54	109.10	Shut-In(2)
234	1206.39	110.92	End Shut-In(2)
247	2166.54	111.40	Final Hydro-static

## Recovery

Length (ft)	Description	Volume (bbl)
20.00	ocm 20%O 80%M	0.10
60.00	gcom 10%G 20%O 70%M	0.30

\* Recovery from multiple tests

## Gas Rates

Choke (inches)	Pressure (psig)	Gas Rate (Mcf/d)



**TRILOBITE**  
TESTING, INC.

# DRILL STEM TEST REPORT

**FLUID SUMMARY**

Grand Mesa

**16-16s-33w**

1700 N Waterfront PKWY  
BLDG 600 Wichita KS  
67202-5514  
ATTN: John Goldsmith

**DBY 3-16**

Job Ticket: 44342

**DST#: 3**

Test Start: 2011.11.03 @ 21:15:00

## Mud and Cushion Information

Mud Type: Gel Chem

Mud Weight: 9.00 lb/gal

Viscosity: 63.00 sec/qt

Water Loss: 8.79 in<sup>3</sup>

Resistivity: 0.00 ohm.m

Salinity: 7000.00 ppm

Filter Cake: 1.00 inches

Cushion Type:

Cushion Length: ft

Cushion Volume: bbl

Gas Cushion Type:

Gas Cushion Pressure: psig

Oil API:

Water Salinity: deg API

ppm

## Recovery Information

Recovery Table

Length ft	Description	Volume bbl
20.00	ocm 20%O 80%M	0.098
60.00	gcom 10%G 20%O 70%M	0.295

Total Length: 80.00 ft      Total Volume: 0.393 bbl

Num Fluid Samples: 0

Num Gas Bombs: 0

Serial #:

Laboratory Name:

Laboratory Location:

Recovery Comments:

Serial #: 8675

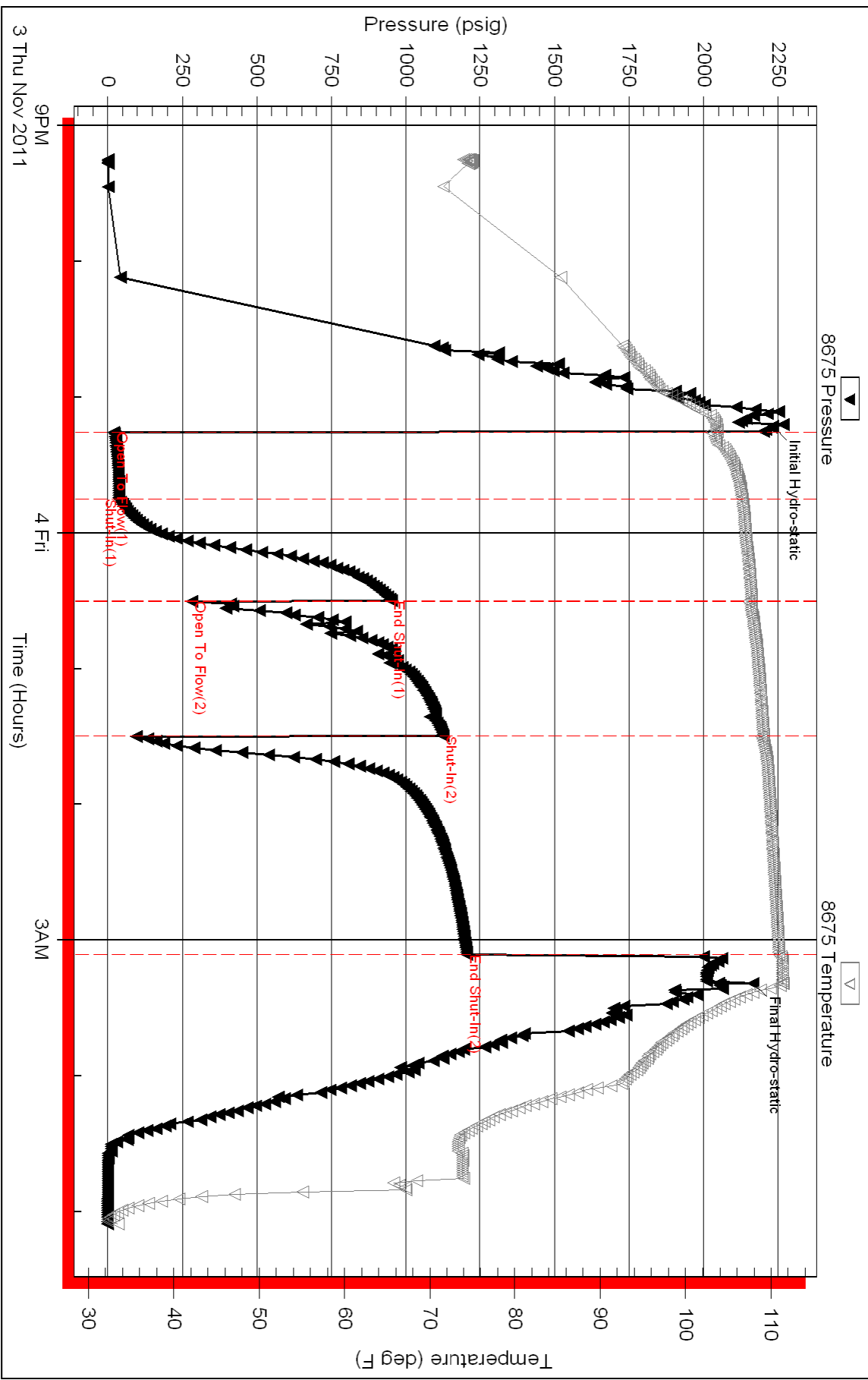
Inside

Grand Mesa

DBY 3-16

DST Test Number: 3

### Pressure vs. Time



Triobite Testing, Inc

Ref. No: 44342

Printed: 2011.11.04 @ 09:47:25