

GRAND MESA

OPERATING COMPANY

(316) 265-3000
FAX: (316) 265-3455

1700 N. WATERFRONT PARKWAY
BLDG. 600
WICHITA, KANSAS 67208-5514

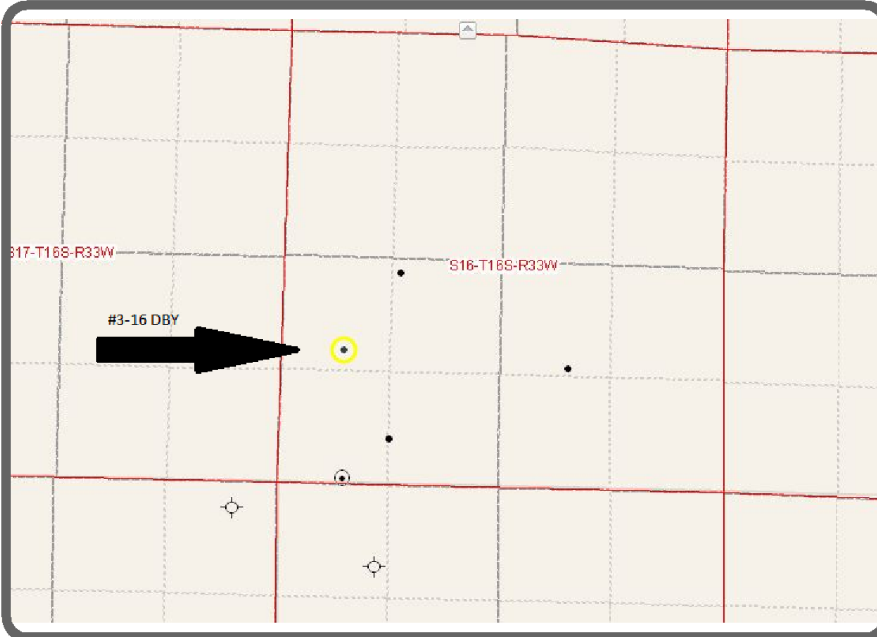
Scale 1:240 (5"=100') Imperial
Measured Depth Log

Well Name: #3-16 DBY
Location: 1548' FSL, 751' FWL, 16-16s-33w, Scott County, Kansas
License Number: API: 15-171-20851 Region: Scott County
Spud Date: 10/27/2011 Drilling Completed: 11/07/2011
Surface Coordinates: Lat: 38.6603741
Long: -100.9781931
Bottom Hole Vertical hole
Coordinates:
Ground Elevation (ft): 3041' K.B. Elevation (ft): 3046'
Logged Interval (ft): 3600' To: RTD Total Depth (ft): 4852'
Formation: Mississippian at RTD
Type of Drilling Fluid: Chemical

Printed by MUD.LOG from WellSight Systems 1-800-447-1534 www.WellSight.com

GEOLOGIST

Name: John Goldsmith
Company: John Goldsmith Wellsite Service
Address: 322 Greenwood Ct.
Cheney, KS 67025
316-640-0236



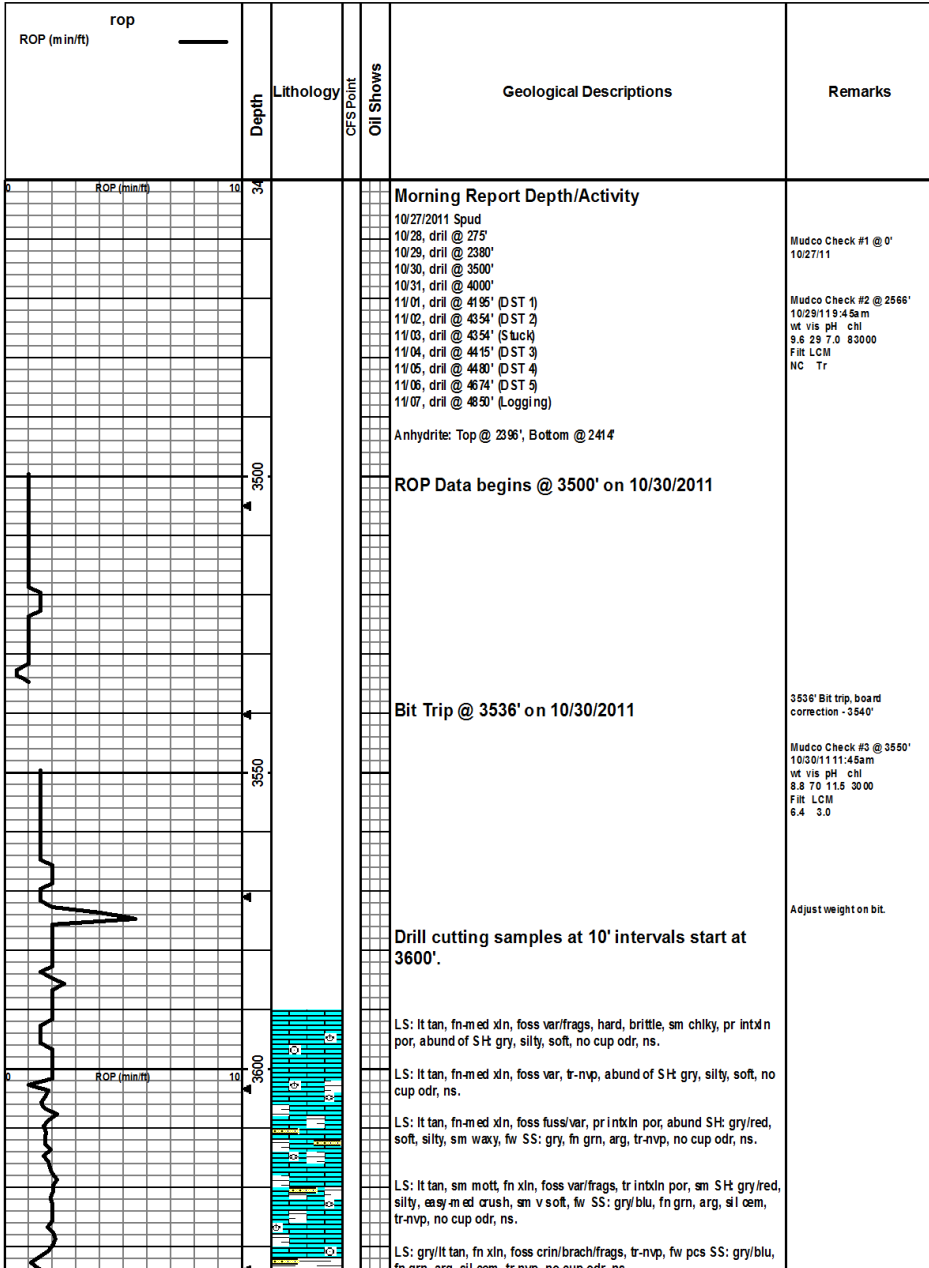
COMMENTS

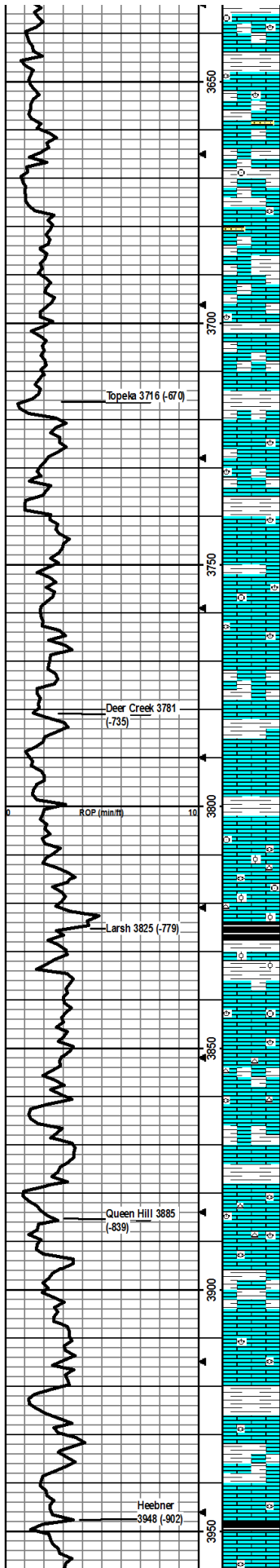
Contractor: Murfin Drilling Company Rig #24
Pusher: Tony Martin
Surface Casing: 8 5/8" set at 205'
Production Casing: No production casing installed, well was plugged.
Mud by: MudCo
DST's by: Tribolite Testing
Logs by: Weatherford (DIL, CN-CD, ML)
RTD=4850'
LTD=4852'

FORMATION TOPS

FORMATION	SAMPLE TOPS		LOG TOPS	
	Depth	Datum	Depth	Datum
Queen Hill	3885'	-839	3884'	-838
Heebner Shale	3948'	-902	3947'	-901

Toronto	3968'	-922	3968'	-922
Lansing	3988'	-942	3990'	-944
Muncie Creek Shale	4162'	-1116	4162'	-1116
Stark Shale	4253'	-1207	4252'	-1206
Hushpuckney Shale	4301'	-1255	4301'	-1255
Marmaton	4369'	-1323	4372'	-1326
Upper Fort Scott	4483'	-1437	4486'	-1440
Little Osage Shale	4506'	-1460	4508'	-1462
Excello Shale	4524'	-1478	4524'	-1478
Johnson Zone	4600'	-1554	4602'	-1556
Morrow	4662'	-1616	4662'	-1616
Mississippian	4728'	-1682	4728'	-1682
RTD	4850'	-1804		
LTD			4852	-1806





LS: gry/lt tan, fn xln, foss var/frags, sm chky, tr-nvp, fw SH gry/red, silty, easy med crush, no cup odr, ns.

LS: lt tan/gry, fn xln, foss crin/var/frags, sm chky, tr-nvp, fw SH: gry/grn, fissile, med crush, no cup odr, ns.

LS: crm/lt tan/fw gry, micro-fn xln, foss crin/fuss/var, dense, fw chky, tr-nvp, fw SS: gry/grn, fn-fn grn, arg, tr-nvp, no cup odr, ns.

LS: lt tan/sm gry/sm crm, fw mott, fn-crs xln, foss var, hard, tr-nvp, sm SH: gry-grn/brn, silty, soft, fw fissile, no cup odr, ns.

LS: lt tan/gry, fw mott, fn xln, sm var foss, hard, tr-nvp, sm SH: gry-grn, silty, fissile, med crush, fw SS: brn, fn-med grn, sub rnd, fr sorting, sil cem, tr intgrn por, no cup odr, ns.

LS: gry/lt tan, fw mott, fn xln, dense, hard, tr-nvp, fw SH: gry-grn, silty, med crush.

LS: gry/lt tan, micro-fn xln, fw foss var, dense, hard, tr-nvp, no cup odr, ns.

LS: gry, fn xln, dense, hard, tr-nvp, sm SH: gry, silty, soft, no cup odr, ns.

Much of the same as above, sm LS: lt tan, micro-fn xln, foss frags/var, sm chalky, dense, tr-nvp, no cup odr, ns.

LS: lt tan, micro-fn xln, dense, hard, tr-nvp, sm LS: gry, mott, med xln, dense, hard, tr-nvp, no cup odr, ns.

LS: lt tan/gry, fn xln, fw foss, dense, hard, fw chky, tr-nvp, sm SH: gry, silty, med crush, no cup odr, ns.

LS: lt tan/gry, micro-fn xln, fw foss brach/frags, fw ool, dense, hard, fw chky pcs, tr-nvp, fw SH: gry, silty, fissile, med crush, no cup odr, ns.

LS: lt tan, micro-fn xln, foss crin/brach/fuss, dense, hard, fw chky pcs, tr-nvp, sm SH: brn/drk gry/blk, silty, fissile, sm carb, med crush, no cup odr, ns.

LS: crm/lt tan, micro-fn xln, sm chky, dense, tr-nvp, sm SH: gry/blk, silty, fissile, sm carb, med crush, no cup odr, ns.

LS: crm/lt tan, fw gry mott, micro-fn xln, sm chky, dense, tr-nvp, fw SH: gry, silty, soft, no cup odr, ns.

LS: lt tan/gry, sm mott, fn-med xln, fw chky, dense, hard, tr-nvp, fw SH: gry/grn, fissile, silty, med crush, no cup odr, ns.

LS: lt tan, fn xln, fw foss, sm chky, dense, tr-nvp, sm SH: gry/drk gry/grn, sm fissile, med crush, no cup odr, ns.

LS: lt tan/gry, fn-med xln, sm foss fust/crin/frags, fw chky, dense, hard, tr-nvp, fw SH: gry/grn, fissile, silty, med crush, no cup odr, ns.

LS: lt tan/gry, fn xln, fw var foss, dense, hard, tr-nvp, fw Chert gry, sm SH: gry, silty, med crush, no cup odr, ns.

LS: crm/lt tan/sm gry, fn-med xln, foss brach/frags, fw ool, dense, brittle, tr-nvp, sm SH: gry/grn/blk, silty, fissile, fw carb, med crush, no cup odr, ns.

LS: lt tan/gry, fn xln, foss/ brach/crin/var, dense, brittle, fw chky, tr-nvp, fw drk min stains, does not fluor, does not out, sm SH: gry/grn, fissile, silty, no cup odr, nsfo.

LS: crm/lt tan, fn-med xln, foss brach/var/frags, silty, tr infoss por, fw chky, sm SH: gry, silty, no cup odr, ns.

LS: crm/lt tan, fn-med xln, foss brach/frags, dense, brittle, tr infoss por, fw chky, fw Chert: gry, fw SH: gry/red, silty, easy-med crush, no cup odr, ns.

LS: crm/lt tan/fw gry, fw mott, fn-med xln, sm foss, dense, hard, tr-nvp, abund SH: gry/grn/red, silty, sm fissile, easy-med crush, no cup odr, ns.

LS: lt tan, fn-med xln, foss brach/crin/var, dense brittle, sm silty/grainy, tr intxn por, sm SH: gry/grn, silty, soft, no cup odr, ns.

LS: lt grn/tan, fn-med xln, foss brach/fuss/frags, hard, tr-nvp, fw Chert: gry, foss, no cup odr, ns.

LS: crm/lt tan, fn-med xln, foss brach/frags, hard, sm brittle, tr-nvp, sm SH: gry, silty, med crush, no cup odr, ns.

LS: lt tan/gry, fn xln, fw foss frags, dense, hard, tr-nvp, no cup odr, ns.

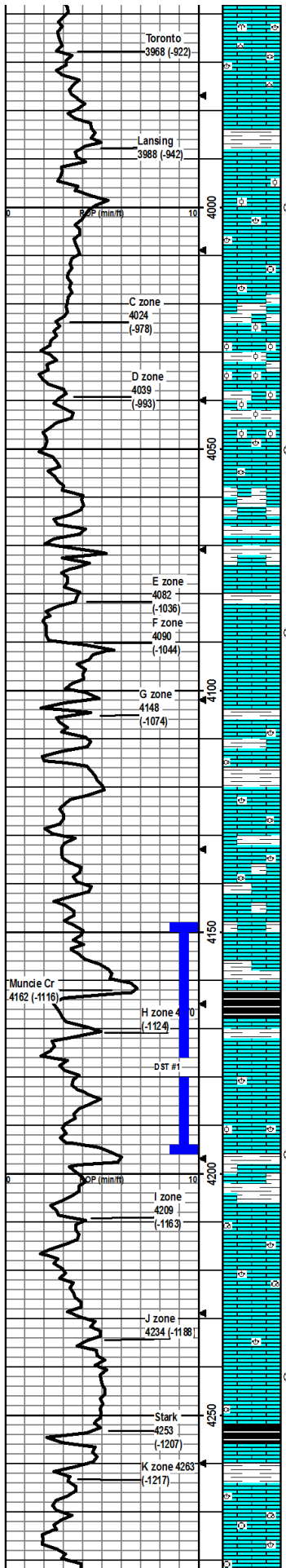
LS: lt tan/gry, fn xln, fw foss frags, dense, sm hard, tr-nvp, abund SH: gry/grn, silty, fissile, med crush, no cup odr, ns.

LS: gry/lt tan, fn-med xln, fw foss frags, hard, tr-nvp, abund SH: gry/grn, silty, fissile, med crush, no cup odr, ns.

LS: crm/lt tan, micro-fn xln, foss frags, sm hard, tr-nvp, sm SH: gry/grn, silty, fissile, no cup odr, ns.

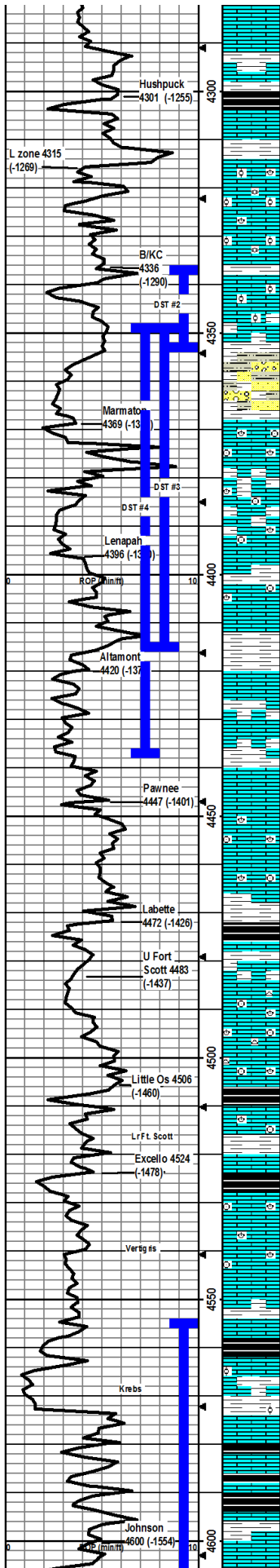
LS: crm/lt tan, fn xln, fw foss frags, tr-nvp, sm SH: gry/grn, silty, fissile, no cup odr, ns.

LS: crm/lt tan, fn xln, silty, foss fust/frags, tr infoss por, abund SH: gry/blk/red-brn, fw carb, silty, fissile, med crush, no cup odr, ns.



LS: crm/lt tan, fn xin, foss, tr infoss por, abund SH gry/red-brn, silty, fissile, med crush, no cup odr, ns.
 LS: crm/lt tan, micro-fn xin, foss brach/frags, dense, sm chky, fr ppt-inbln/rare infoss/fw vug por, fw pcs dul yel fluor, stream cut pal blu, slight cup odr, ssfo, fw Chert: wht, opaque
 LS: crm/lt tan, micro-fn xin, fw foss brach/frags, sm ool, dense, sm chky, fr ppt-inbln/rare inbol/rare vug por, dul yel fluor, stream cut pal blu, slight cup odr, ssfo.
 LS: lt tan, micro-fn xin, fw foss, sm ool, sm 2nd rxin, dense, fr ppt-inbln por in 2nd rxin, fr inbol por, rare vug por, dul yel fluor, stream cut pal blu, slight cup odr, frsfo.
 LS: lt tan, fn xin, foss brach/gas/frags, dense, med crush, tr inbln por, sm Chert: wht, opaque, foss, sm SH: gry, silty, soft, no cup odr, ns.
 LS: crm/lt tan, micro-fn xin, fw foss frags, dense, 2-3 pcs w/ rare vug por, scat dul yel fluor, cut pal blu, sm Chert: wht, opaque, fw SH: gry, silty, soft, no cup odr, vssfo.
 LS: crm/lt tan, micro-fn xin, fw foss frags, dense, sm SH: gry/grn/brn, silty, fssile, soft, no cup odr ns.
 LS: crm/lt tan, micro-fn xin, profus foss/ool, dense, brittle, ppt inbln/fr inool por, dul yel/gold fluor, stream cut pal blu, fr-gd cup odr, gd sfo in svl pcs/try.
 30" smpl much of the same as above, sm chky, only 3-4 pcs/try, sm SH: gry, silty, fissile, soft, 60" smpl only 2-3 pcs/try, abund of SH: gry, silty, fssile, soft.
 LS: crm/lt tan, micro-fn xin, fw foss frags, dense, hard, tr-nvp, abund SH: gry/grn/brn, silty, sm fssile easy-med crush, no cup odr, ns.
 LS: lt tan, fn xin, fw foss frags, dense, scat fr inbln por in 2nd rxin facies, dul yel fluor, stream cut pal blu, ssfo, fnt cup odr, sm SH: gry/grn/red-brn, silty, med crush.
 LS: fw pcs much of the same as above, probably from uphole, mostly SH: gry/grn/red-brn, silty, fissile, med crush, 1-2 LS: crm/lt tan, dense, sm 2nd rxin, fr inbln por in 2nd rxin facies, scat dul yel fluor, stream cut pal blu, v slight cup odr, ssfo.
 LS: lt tan, micro-fn xin, dense, sm 2nd rxin in vugs, pr-fr vug por, dul yel fluor, stream cut pal blue, v slight cup odr, ssfo.
 LS: lt tan, micro xin, dense, fr inbln por, dul yel fluor, stream cut pal blu, v slight cup odr, fr sfo, abund SH: gry/grn, silty, fissile, med crush.
 LS: lt tan, micro-fn xin, foss brach/var, dense brittle, fw dhly, tr inbln por, fw Chert: gry, foss, abund SH: gry/red-brn, silty, med crush, no cup odr, ns.
 SH: gry/grn/red-brn, silty, mostly soft, fw med crush.
 LS: lt tan/gry, micro-fn xin, fw foss frags, fw ool, dense hard, tr-nvp, abund SH: gry/red-brn, silty, fssile med crush, no cup odr, ns.
 LS: lt tan, micro-fn xin, fw foss, dense, tr inbln por, v slight cup odr, scat dul yel fluor, cut pal blu, vssfo, abund SH: gry/red-brn, silty, soft, no cup odr, ns.
 LS: crm/lt tan, fn xin, dense, brittle, tr ppt-inbln por, sm grainy, sm chky, abund SH: gry/grn/red-brn, silty, soft, no cup odr, ns.
 LS: crm/lt tan, micro xin, dense, brittle, tr-nvp, fw LS: lt tan, fn xin, dense, foss, tr inbln por, med crush, sm Chert gry, abund SH: gry/red-brn/grn, silty, soft, no cup odr, ns.
 SH: gry/red-brn/fw blk, silty, soft, sm carb w/ med crush, LS: lt tan, fn xin, fr inbln/rare small vug por, slight cup odr, scat dul yel fluor, stream cut pal blu, ssfo 2-3 pcs/try, most likely from the top of "H" zone.
 LS: lt tan/gry, fn xin, gd intxln/scat vug por, v slight cup odr, dul yel fluor, stream cut pal blu, fr sfo, 6-8 pcs/try, abund SH: gry/grn/red/brn, silty, soft fw pcs med crush.
 LS: lt tan, gry, fn xin, fw foss, sm chky, gd inbln/scat vug por, fr cup odr, dul yel fluor, stream cut pal blu, fr-gd sfo, svl pcs/try, sm SH: gry/red/brn, silty, soft fw med crush, 60" sm pl had less show, 6-8 pcs/try, slight cup odr.
 LS: lt tan/gry, fn-med xin, sm chky, dense, sm hard, tr-nvp, abund SH: gry/grn/red/brn, silty, easy-med crush, no cup odr, ns.
 LS: lt tan/gry, fn-med xin, fw foss frags, fw chky, sm grainy, dense, tr-nvp, abund SH: gry/red, silty, med crush, no cup odr, ns.
 LS: crm/lt tan, micro-fn xin, foss gast/brach/frags, dense, brittle, gd inbln/intfoss por, gd sfo 8-10 pcs/try, dul yel fluor, stream cut pal blu, fr cup odr, fw SH: gry/red, silty, med crush.
 30" smpl, LS: crm/lt tan, micro-fn xin, foss brach/var, dense brittle, gd-inbln/spotty vug por, gd sfo, dul yel fluor, stream cut pal blu, slight cup odr, fw SH: gry/red, silty.
 60" smpl, LS: crm/lt tan, micro-fn xin, fw foss, dense, brittle, tr-nvp, fw pcs 2-3/try, of LS: w/ gd intxln/spotty vug por, w/ gd sfo.
 LS: lt tan/gry, fn xin, sm foss frags, dense, brittle fr inbln/intfoss por, v slight cup odr, dul yel fluor, cut pal blu, ssfo, maybe be from up hole, fw SH: gry/red, silty, soft, no cup odr, ns.
 LS: lt tan, fn-med xin, fw micro xin, sm chky, brittle, mostly hard, fr inbln por, slight cup odr, dul yel fluor, cut pal blu, ssfo, sm SH: gry/red/brn, silty, sm carb, med crush.
 LS: lt tan, micro-fn xin, foss brach/crin/gast, fw ool, sm chky, brittle, sm hard, fr inbln/vug por, faint cup odr, scat dul yel fluor, cut pal blu, ssfo, 5-6 pcs/try, sm SH: gry/grn/red/brn, silty, med crush, fw easy crush, sm fissile.

CFS @ 4000' 30" 60"
 Mudco Check #4 @ 4009' 1031/11845am wt vis pH chl 9.0 62 10.5 4600 Filt LCM 6.8 2
 CFS @ 4050' 30"
 CFS @ 4088' 30" 60"
 DST1) 4148-4195
 30454500
 1st) BOB in 1"
 2nd) BOB in 1.5"
 IFP 333-935#
 ISIP 1091#
 FFP 973-1092#
 F SP 11 25#
 HP 2078-1954#
 Recvd: 2248' WCM, 117' Water
 Mudco Check #5 @ 4195' 11/11/11 11:20am wt vis pH chl 9.4 55 9.5 5200 Filt LCM 8.0 2
 CFS @ 4195' 30" 60"
 CFS @ 4241' 30" 60"



LS: lt tan/gry, fn-med xln, dense hard, fw chly, tr intxn por, fw Chert gry, opaque, sm SH gry/grn/red, silty, soft, no cup odr, ns.

SH: gry/grn/red/blk, silty, soft, fw carb, fssile med crush, LS: crm/gry, micro xln, foss brach/fuss/var, dense, brittle, sm hard, fw chly, tr-nvp, no cup odr, ns.

LS: lt tan, micro xln, fw foss crin/brach/frags, dense, mostly uniform, tr-fr intxn por/rare gd intfoss por, scat dul yel fluor, cut pal blu, fr-gd cup odr, vsfo, SH: blk/brn/gry, silty, fissile, med crush.

LS: crm/lt tan, micro-fn xln, foss brach/irin/var, sm ool, sm dense, sm chly, brittle, mostly uniform, tr-nvp, gd-strg cup odr, sm LS: lt tan, micro-fn xln, foss brach/irin/var, sm ool, dense, brittle pr intxn por/rare gd intfoss-ool por, dul yel fluor, stream cut pal blu, fr sfo.

LS: gry/lt brn, micro-fn xln, fw foss, fw ool, mostly dense, mostly hard, sm chly, sm brittle, tr-nvp, fw pcs 3-4/try, gd intfoss-ool por w/ gd sfo, most likely from above, slight cup odr.

LS: crm/lt tan, fn xln, dense, fw foss/ool, sm LS: fn-med xln, fr intxn por/fw fr intfoss/ool por, drk stns in oolcasts, fr sfo on break dul yel fluor, stream cut pal blu, fr cup odr, svrl pcs/try w/ sho in stop & 30" smpl, less in 60" w/ fr sfo.

SHStn: blu/gry/brn, vry fn grn, soft, sm waxy, abund SH gry/red, waxy, silty, soft, sm SS: blu/gry, vry fn grn, arg, cal cem, tr-nvp, no cup odr, ns.

Much as the same as above, abund blu/gry SS, sm LS: crm/lt tan, fn xln, foss crin/brach/frags, sm dense, sm brittle, sm fr intxn por, dul yel fluor, stream cut pal blu, vsfo, 4-6 pcs/try, fr cup odr (got stuck at 4354' odr in part due to oil being pumped down hole).

LS: crm/lt tan, fn-med xln, foss brach/irin/frags, dense, hard, fw chly, tr intxn por, 1-2 pos/try w/ vsfo, scat dul yel fluor, cut pal blu, fw SH: gry/red, silty, med crush.

LS: lt crm/lt tan, fn xln, foss crin/frags, dense, hard, fw chly, tr-pr intxn, scat dul yel fluor, slow cut pal blu, vsfo, 3-4 pos/try, slight cup odr, sm SH: gry, silty, sm waxy, med crush.

LS: lt tan, fn-med/fw crs xln, foss brach/fuss/frags, fw ool, fr intxn/fw intfoss/ool por, sm dense dul yel fluor, cut pal blu, sm gas bub on brk, sm drk dead oil does not brk out of por, vsfo, sm SH: gry/brn/red, silty, med crush, fw pcs of f sfo in 30" smpl, fw more intfoss/ool por pcs, fw pcs 3-4 in 60" smpl, mostly LS: gry, fn xln, dense, hard, tr-nvp.

SH: gry/grn/brn/org, silty, fssile med crush.

LS: lt tan, fn-med/fw crs xln, foss crin/frags, mostly dense, fw chly, sm flakey, mostly hard, scat fr intxn por, dul yel fluor, cut pal blu, vsfo, sm drk dead oil does not brk out of por well, slight cup odr.

LS: crm/lt tan, micro-fn xln, dense, brittle, easy-med crush, fr ppt intxn por, dul yel fluor, cut pal blu, vry slight cup odr, vsfo.

LS: crm/lt tan, micro-fn xln, dense, fw foss frags, mostly hard, tr-pr scat intxn por, scat dul yel fluor, cut pal blu, v slight cup odr, vsfo, 1-2 pcs/try sm SH: gry/brn, silty, fissile, med crush.

LS: crm/gry, fn xln, v fw foss, dense, hard, sm flakey, sm chly, tr-nvp, fw chert, gry, opaque no cup odr, ns.

LS: crm/gry, micro-fn xln, fw foss crin/brach/frags, dense, tr-pr ppt-intxn por, scat dul yel fluor, slw cut pal blu, does not break out of por well, v slight cup odr, vsfo.

SH: gry/grn/blk, silty, fissile, med crush, sm carb, LS: crm/gry, micro-fn xln, sm crs xln, foss brach/fuss/frags, fw chly, tr-pr ppt-intxn por, scat dul yel fluor, slw cut pal blu, vsight cup odr, vsfo, 1-2 pcs/try, most likely from above.

LS: lt tan, fn xln, foss crin/fuss/frags, vry chly, sm pure chlk, pr-fr ppt-intxn por, dul yel fluor, fw pcs of drk stns, does not brk out of por, slw cut pal blu, vs cup odr, sm SH: gry/drk gry, silty, fissile, med crush.

LS: lt tan/gry, fn xln, foss brach/irin/frags, sm chly, hard, tr-nvp, fw SH: gry/brn, silty, med crush, no cup odr, ns.

LS: gry/lt tan, fn-med xln, foss brach/frags, hard, brittle, fw chly, rare pr intxn por, abund SH gry/grn/brn/blk, silty, fissile, med crush, sm carb, fw Chert: wht, opaque, sharp no cup odr, ns.

LS: lt tan/gry, fn xln, foss brach/irin/frags, dense, fw chly, rare pr intxn por, spty dul yel fluor, vsfo, no cup odr, abund SH: gry/brn/red/blk, silty, sm fssile, easy-med crush, sm carb.

SH: gry/drk gry/blk, silty, easy-med crush, sm fissile, sm carb, fw SHStn: gry-brn, muddy, med crush, sm LS: lt tan/gry, fn xln/sm med-crs xln, dense, hard, tr-nvp, no cup odr, ns.

LS: lt tan, micro-fn xln, foss crin/brach/frags, sm ool, scat ppt-intxn por, scat dul yel fluor, slow cut pal blu, vsfo, 1-2 pcs/try, sm SH: gry/grn/brn, silty, med crush, fssile, v slight cup odr.

LS: lt tan, fn xln, foss brach/irin/frags, fw grainy, rare ppt-intxn por, dul yel fluor, slow cut pal blu, vsfo, 1-2 pcs/try, possibly from above, abund of SH: gry/brn, silty, med crush, v slight cup odr.

LS: crm/lt tan, fn xln, foss brach/var/frags, tr intxn por, abund SH: gry/grn/brn/drck gry, silty, sm fissile, med crush, sm carb, no cup odr, ns.

LS: lt tan/gry, micro-fn xln, fw foss, dense, hard, sm chly, tr of ppt-intxn por, little drk staining in ppt por, does not fluor, does not cut, abund SH: gry/brn, silty, fssile med crush, no cup odr, ns.

SH: gry/grn/brn/blk, silty, sm fissile, easy-med crush, sm carb, sm LS: gry, fn-med xln, foss fw ool, hard, sm flakey, tr-nvp, fw 2-3 pcs/try LS: crm/lt tan, micro-fn xln, dense, brittle, rare ppt-intxn por, scat dul yel fluor, slight cut pal blu, no cup odr, vsfo.

LS: lt tan/gry, fn-med xln, foss frags/irin/brachis, tr intxn por, sm SH: gry/grn/brn/blk, silty, fssile med crush, no cup odr, ns.

LS: crm/lt tan, micro-fn xln, dense, brittle, rare vug por/w v fw ppt-intxn por, dul yel fluor, cut stream pal blu, svrl pcs w/ loht staining on svrl

CF 5 @ 4310'
30"60"

Mudco Check #6 @ 4337'
11/2/11 5:45am
wt vis pH chl
9.2 65 10.0 6000
FIL LCM
8.8 1

DST2) 4336-4354
30454560
1st) Wk surface built to 2.25"
2nd) Wk surface built to 1.5"
IF P 20-44#
ISP 429#
FFP 49-74#
F SP 429#
HP 2204-2151#
Recvd: 117' wa te rw little oil
scum

CF 5 @ 4354'
30"60"

Mudco Check #7 @ 4354'
11/3/11 06:30am
wt vis pH chl
9.3 67 9.5 7000
FIL LCM
8.8 1

CF 5 @ 4384'
30"

DST3) 4350-4415
30456090
1st) Wk surface built to 6"
2nd) Wk surface built to 1"
IF P 21-38#
ISP 951#
FFP 282-1125#
F SP 1206#
HP 2233-2167#
Recvd: 20' OCM, 60' GCOM

CF 5 @ 4415'
30"60"

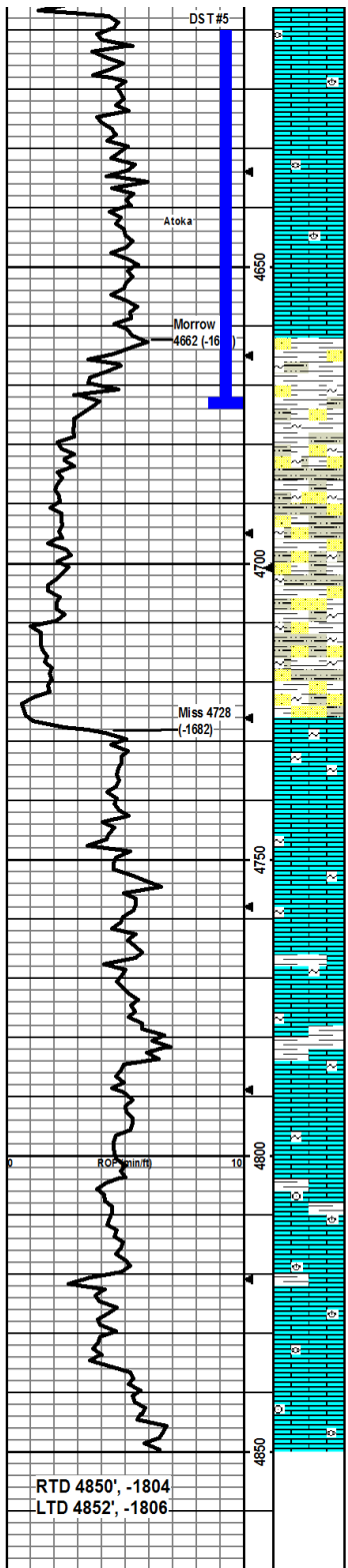
Mudco Check #8 @ 4415'
11/04/11 05:45am
wt vis pH chl
9.0 74 9.0 8800
FIL LCM
11.2 1

CF 5 @ 4438'
30"60"

DST4) 4350-4438
30456090
1st) Built to 3"
2nd) Built to 2"
IF P 22-49#
ISP 930#
FFP 63-122#
F SP 1043#
HP 2132-2099#
Recvd: 120' OCM

Mudco Check #9 @ 4479'
11/05/11 07:50am
wt vis pH chl
9.0 59 10.5 7700
FIL LCM
7.2 1

DST5) 4554-4674
30303030
1st) Built to 11"
2nd) No Blow
IF P 23-28#
ISP 873#
FFP 32-34# F SIP



pcs, v slight cup odr, ssfo.

LS: lt tan, fn xin, dense, fw foss frags, pr ppt-intbn por, dul yel fluor, cut pal blu, svrl pos/try, fr odr, ssfo, stns on many pcs, fw pcs Chert: tan, trans, sm SH: gry/brn/sm blk, silty, sm fissile, med crush.

LS: lt tan/gry, fn xin, dense, tr ppt-intbn por, dul yel fluor, slw cut, sm SH: gry/brn, silty, easy-med crush, v slight cup odr.

LS: lt tan, fn xin, dense, sm foss frags, tr ppt-intbn por, dul yel fluor, cut pal blu, fw SH: gry/brn/drk gry, silty, med crush, no cup odr, vsso, only 1-2 pcs/try, maybe from above.

LS: crm/lt tan, micro-fn xin, dense, brittle, tr-nvp, v slight cup odr, fw pcs LS: lt tan, fn xin, tr-ppt-intbn por, w/ vsso, m uch like above, sm SH: gry/brn, silty, easy-med crush.

LS: crm/lt tan, micro-fn xin, dense, fw chlky, tr-nvp, no cup odr, nsfo, sm SH: gry/grn/brn, silty, fissile, med crush.

SH: gry, silty, soft, SS: gry/blu, vfn grn, well srted, arg, glauc, calc cem, fw loose grns, fn grn, well srted, no cup odr, ns.

Mostly SH: gry, silty, soft, sm SS: gry/blu, vfn grn, well srted, sm glauc, calc cem, sm loose grns, fn grn, well rnd, no cup odr, ns.

SH: gry/grn/brn, silty, soft, sm SH: gry/grn, soft, glauc, fw SS: gry, fn grn, well srted, easy crush, no cup odr, ns.

SH: gry/grn/brn, silty, soft, sm glauc, SS: gry, fn grn, well srted, silca cem, easy crush, no cup odr, ns.

SH: gry, v soft, sm SH: gry/grn, silty, soft, glauc, fw SS: gry, fn grn, rnd, well srted, sil cem, arg, v fw loose grns, fn grn rnd, no cup odr, ns.

SH: gry/grn, silty, soft, glauc, sm SH: gry/grn, v soft, muddy, fw SS: gry, fn grn, well srted, rnd, sil cem, sm glauc, v fw loose grns, fn grn, well rnd, no cup odr, no fluor, ns.

SH: gry/grn, silty, soft, glauc, sm SH: blu/grn, fn grn, well srted, rnd, glauc, sil cem, med-hard crush, v fw loose grn, well rnd, well srted, no cup odr, ns.

SS: blu/grn, fn grn, rnd, well srted, glauc, sil cem, med crush, v fw loose grns, fn grns, well rnd, well srted, sm LS: crm/grn, fn xin, gritty, sandy, glauc, tr intbn por, sm SH: gry/grn, silty, soft, no cup odr, ns.

LS: wht/grn, fn xin, gritty, sandy, glauc, tr intbn por, sm SH: gry/grn, silty, glauc, med crush, no cup odr, ns.

LS: wht, fn xin, gritty, sandy, sm glauc, tr intbn por, sm drk min stns, does not fluor, does not cut no cup odr, nsfo.

LS: wht, fn xin, gritty, sandy, fw glauc, tr-nvp, sm SH: gry/brn, silty, med crush, no cup odr, ns.

LS: wht, fn xin, gritty, sandy, fw glauc, tr-nvp, sm SH: gry/grn, silty, sm glauc, easy-med crush, no cup odr, ns.

LS: wht, fn xin, gritty, sandy, tr-nvp, sm drk m in stns, does not fluor, does not cut, fw SH: gry/grn, silty, sm glauc, med crush, no cup odr, nsfo.

LS: wht, fn xin, gritty, sandy, tr-nvp, abund SH: gry/grn, silty, slightly glauc, med crush, no cup odr, ns.

LS: crm, fn xin, sm sandy, tr-nvp, abund SH: gry/grn, silty, slightly glauc, med crush, no cup odr, ns.

LS: crm/lt tan, fn xin, dense, hard, tr-nvp, abund SH: gry/grn, silty, sm fissile, med crush, no cup odr, ns.

LS: crm/lt tan, fn xin, foss brach/frags, dense, hard, tr-nvp, sm lght brn stns, does cut, does not brk out of por, nsfo, sm SH: gry/grn, silty, fissile, med crush, no cup odr.

LS: crm/lt tan, fn xin, sm foss brach/var, dense, hard, tr-nvp, sm LS wht, fn xin, sandy, brittle, tr-nvp, fw SH: gry/grn, silty, fissile, med crush, no cup odr, ns.

LS: lt tan, fn xin, sm foss, dense, hard, tr-nvp, sm SH: gry, silty, fissile, easy-med crush, no cup odr, ns.

LS: lt tan, fn xin, sm foss brach/fuss, dense, tr-nvp, med-hard crush, sm SH: gry/brn, sm fissile, silty, easy-med crush, no cup odr, ns.

867#
 HP 2333-2224#
 Recvd: 5' Mud

Mudco Check #10 4674'
 11/06/11 11:00am
 wt vis pH chf
 9.1 51 10.5 8500
 Filr LCM
 11.2 2

CF 5 @ 4674'
 30°/60°