



**TRILOBITE
TESTING, INC.**

DRILL STEM TEST REPORT

Grand Mesa Operating Co
1700 N Waterfront Pkwy
Bldg 600
Wichita, Ks 67206
ATTN: Steve Carl

27 16s 37w Scott, Ks

#1-27 Riner

Job Ticket: 45361

DST#: 4

Test Start: 2011.11.21 @ 12:48:00

GENERAL INFORMATION:

Formation: **Ft Scott-Verdigris**

Deviated: No Whipstock: ft (KB)

Time Tool Opened: 15:02:00

Time Test Ended: 18:17:15

Test Type: Conventional Bottom Hole (Reset)

Tester: Bradley Walter

Unit No: 40

Interval: 4496.00 ft (KB) To 4546.00 ft (KB) (TVD)

Reference Elevations: 3037.00 ft (KB)

Total Depth: 4546.00 ft (KB) (TVD)

3032.00 ft (CF)

Hole Diameter: 6.88 inches Hole Condition: Good

KB to GR/CF: 5.00 ft

Serial #: 8652 Inside

Press @ Run Depth: 27.56 psig @ 4497.00 ft (KB)

Capacity: 8000.00 psig

Start Date: 2011.11.21

End Date:

2011.11.21

Last Calib.: 2011.11.21

Start Time: 12:48:05

End Time:

18:17:14

Time On Btm: 2011.11.21 @ 15:01:30

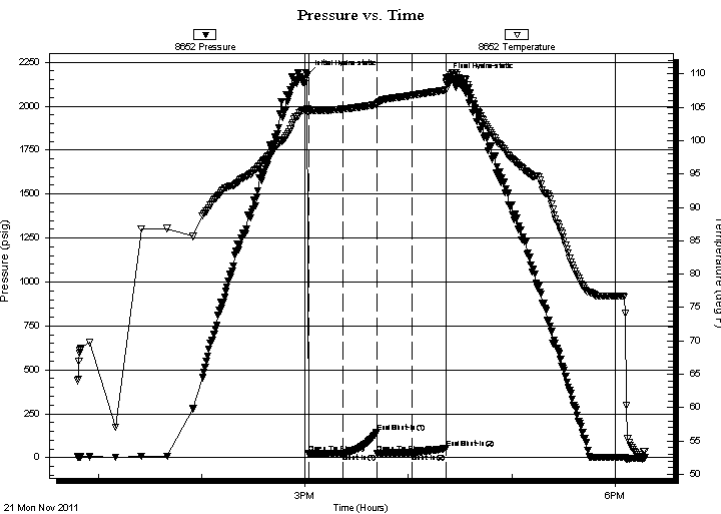
Time Off Btm: 2011.11.21 @ 16:22:00

TEST COMMENT: IF: Surface blow, Died @ 10 minutes.

IS: No return.

FF: No blow.

FS: No return.



PRESSURE SUMMARY

Time (Min.)	Pressure (psig)	Temp (deg F)	Annotation
0	2177.39	104.82	Initial Hydro-static
1	22.67	104.23	Open To Flow (1)
21	24.18	104.73	Shut-In(1)
40	145.12	105.42	End Shut-In(1)
41	26.65	105.48	Open To Flow (2)
61	27.56	106.77	Shut-In(2)
81	52.87	107.57	End Shut-In(2)
81	2161.65	108.64	Final Hydro-static

Recovery

Length (ft)	Description	Volume (bbl)
10.00	ocm 25o 75m	0.05

* Recovery from multiple tests

Gas Rates

Choke (inches)	Pressure (psig)	Gas Rate (Mcf/d)



**TRILOBITE
TESTING, INC.**

DRILL STEM TEST REPORT

FLUID SUMMARY

Grand Mesa Operating Co

27 16s 37w Scott, Ks

1700 N Waterfront Pkwy
Bldg 600
Wichita, Ks 67206
ATTN: Steve Carl

#1-27 Riner

Job Ticket: 45361

DST#: 4

Test Start: 2011.11.21 @ 12:48:00

Mud and Cushion Information

Mud Type: Gel Chem

Cushion Type:

Oil API:

0 deg API

Mud Weight: 9.00 lb/gal

Cushion Length:

ft

Water Salinity:

0 ppm

Viscosity: 52.00 sec/qt

Cushion Volume:

bbbl

Water Loss: 7.98 in³

Gas Cushion Type:

Resistivity: ohm.m

Gas Cushion Pressure:

psig

Salinity: 5000.00 ppm

Filter Cake: 1.00 inches

Recovery Information

Recovery Table

Length ft	Description	Volume bbl
10.00	ocm 25o 75m	0.049

Total Length: 10.00 ft Total Volume: 0.049 bbl

Num Fluid Samples: 0

Num Gas Bombs: 0

Serial #:

Laboratory Name:

Laboratory Location:

Recovery Comments:

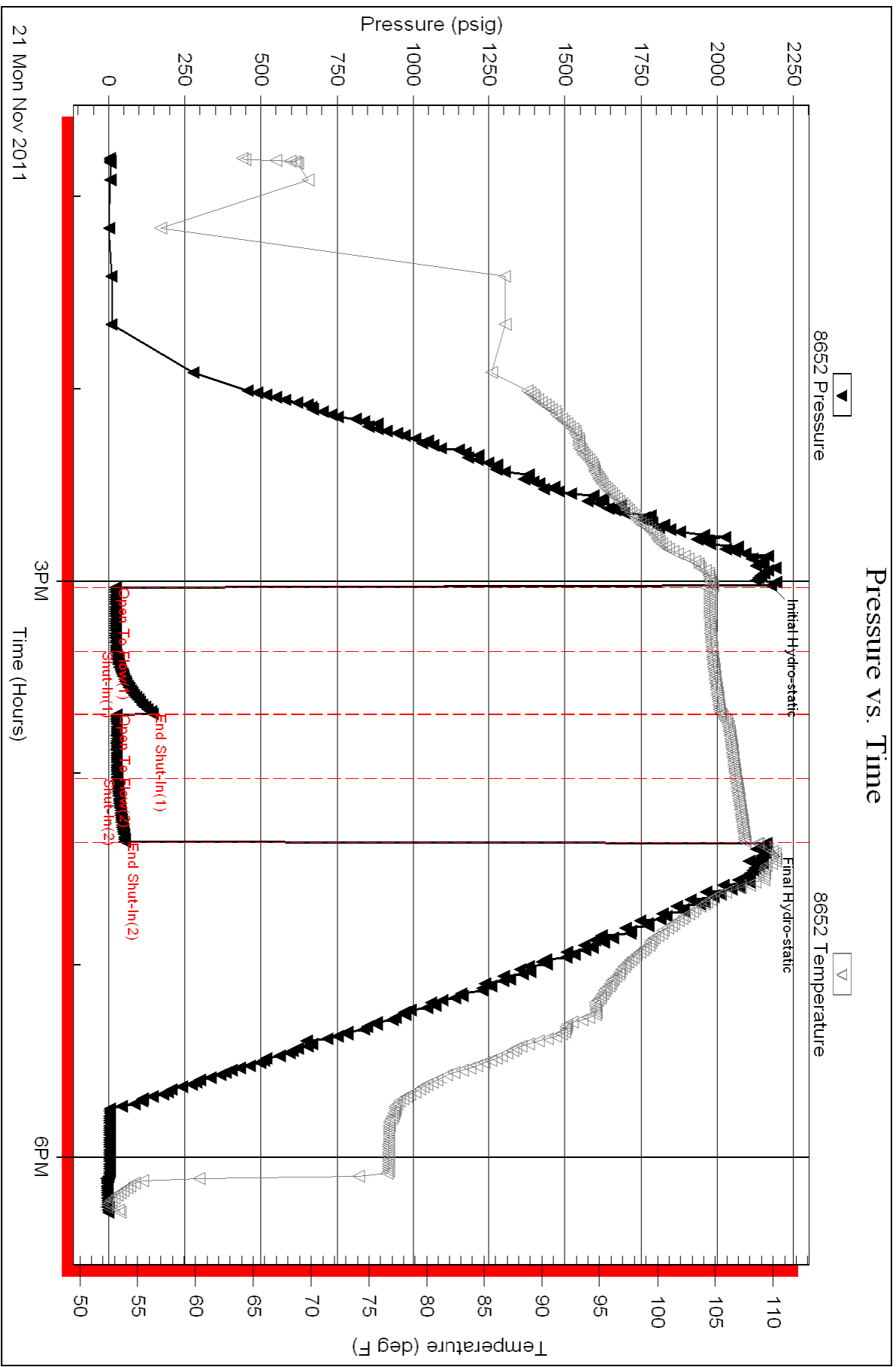
Serial #: 8652

Inside

Grand Mesa Operating Co

#1-27 Riner

DST Test Number: 4



Triobite Testing, Inc

Ref. No: 45361

Printed: 2011.11.21 @ 21:07:21