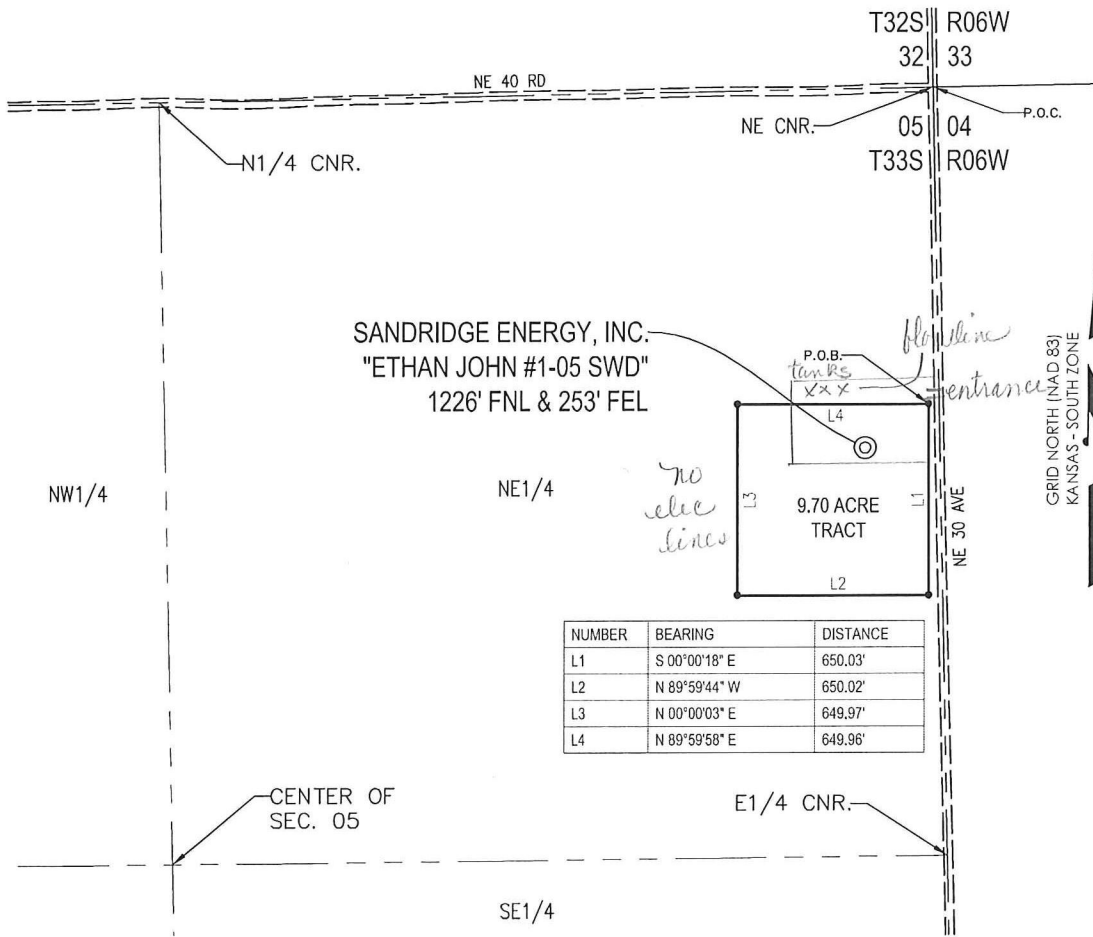




T 33 S - R 06 W



PLAT SHOWING
**9.70 ACRE TRACT OF LAND IN THE
 NE1/4 OF SECTION 05, T33S-R06W,
 HARPER COUNTY, KANSAS**

METES AND BOUNDS DESCRIPTION (9.70 ACRE TRACT)

PART OF THE NE1/4 OF SECTION 05, TOWNSHIP 33 SOUTH, RANGE 06 WEST, HARPER COUNTY, KANSAS, MORE PARTICULARLY DESCRIBED AS FOLLOWS:

COMMENCING AT THE NE CORNER OF SAID SECTION 05;
 THENCE S 01°06'46" E ALONG THE EAST LINE OF SAID SECTION 05, A DISTANCE OF 1079.63 FEET;
 THENCE S 88°53'14" W, A DISTANCE OF 34.96 FEET TO THE POINT OF BEGINNING;
 THENCE S 00°00'18" E, A DISTANCE OF 650.03 FEET;
 THENCE N 89°59'44" W, A DISTANCE OF 650.02 FEET;
 THENCE N 00°00'03" E, A DISTANCE OF 649.97 FEET;
 THENCE N 89°59'58" E, A DISTANCE OF 649.96 FEET TO THE POINT OF BEGINNING.

SAID TRACT CONTAINING 9.70 ACRES OF LAND AS SURVEYED.

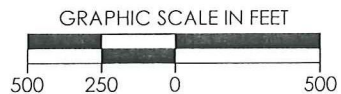
SURVEYOR'S CERTIFICATE:

I, C. ED GRAY, KANSAS LICENSED PROFESSIONAL LAND SURVEYOR, NO. 1404, DO HEREBY CERTIFY THAT THIS PLAT REPRESENTS THE RESULTS OF A SURVEY MADE ON THE GROUND UNDER MY SUPERVISION.

12/5/2011

GENERAL NOTES:

THE TIES AND FOOTAGES SHOWN ON THIS PLAT ARE FROM LINES OF OCCUPATION FROM A SURVEY MADE ON THE GROUND AND / OR BEARING AND DISTANCES FROM THE GENERAL LAND OFFICE PLAT OF THE AREA SHOWN AND MAY NOT BE THE ACTUAL PROPERTY CORNERS. THIS PLAT DOES NOT REPRESENT A TRUE BOUNDARY SURVEY.



REVISION	SandRidge		
	"ETHAN JOHN #1-05 SWD" PART OF THE NE1/4 OF SECTION 05, T-33-S, R-06-W PROPOSED DRILL SITE HARPER COUNTY, KANSAS		
	SCALE: 1" = 500'	DRAWN BY: S.ANDER	SHEET NO.: 1 OF 1
	PLOT DATE: 12-05-2011		