

T33S, R10W, 6th P.M.

SGOMI

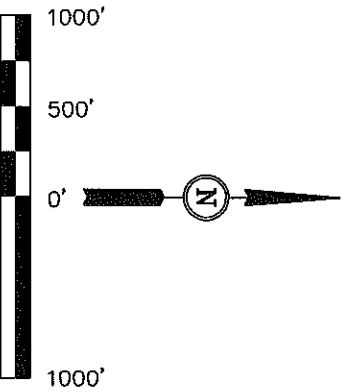
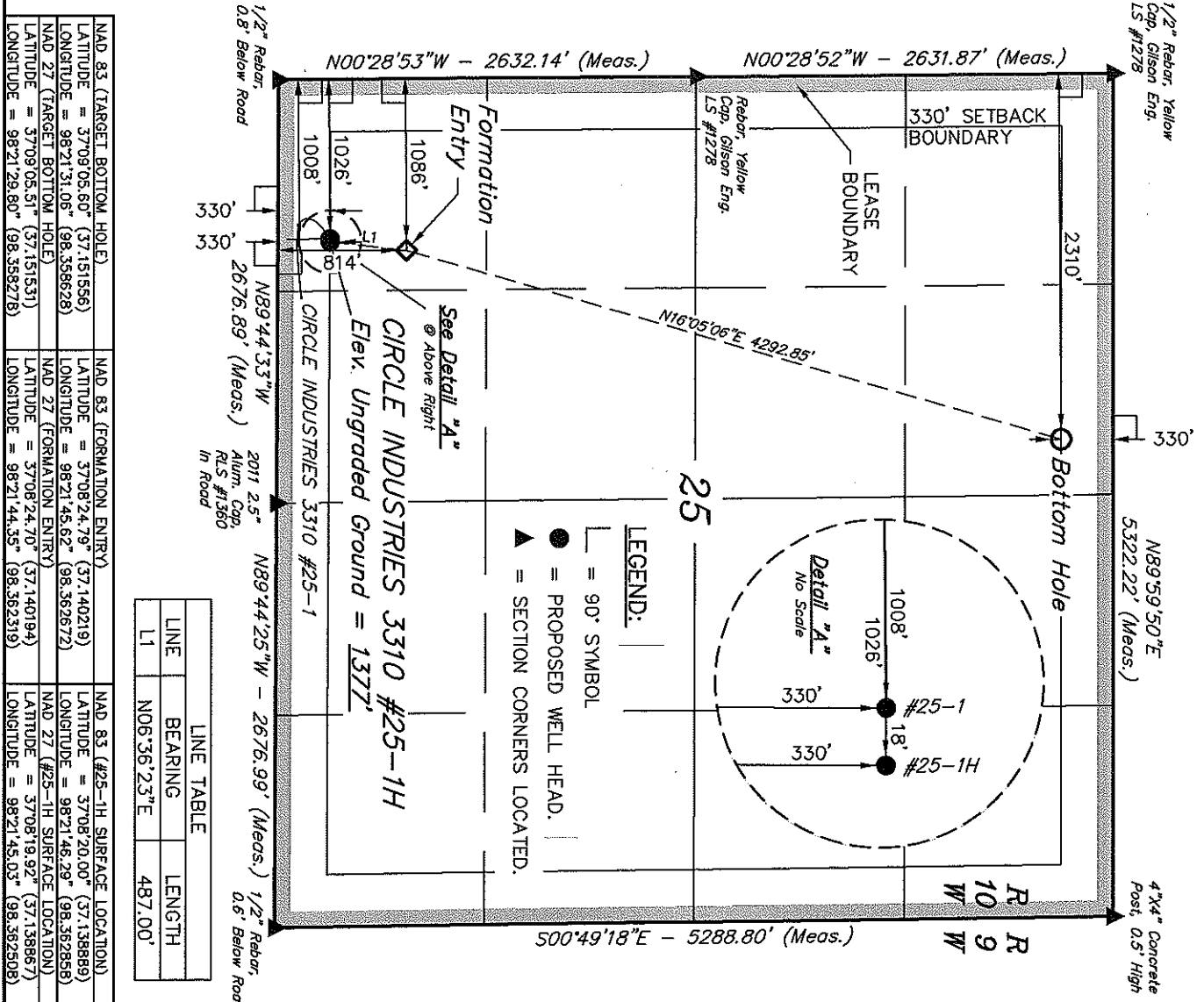
Well location, CIRCLE INDUSTRIES 3310 #25-1H, located as shown in the SW 1/4 SW 1/4 of Section 25, T33S, R10W, 6th P.M., Barber County, Kansas.

BASIS OF ELEVATION

SPOT ELEVATION LOCATED AT THE NORTHEAST CORNER OF SECTION 22, T33S, R7W, 6th P.M. TAKEN FROM THE ANTHONY, QUADRANGLE, KANSAS, HARPER COUNTY, 7.5 MINUTE QUAD (TOPOGRAPHIC MAP) PUBLISHED BY THE UNITED STATES DEPARTMENT OF THE INTERIOR, GEOLOGICAL SURVEY. SAID ELEVATION IS MARKED AS BEING 1348 FEET.

BASIS OF BEARINGS

BASIS OF BEARINGS IS A G.P.S. OBSERVATION.



CERTIFICATE
 THIS IS TO CERTIFY THAT THE ABOVE PLAT AND SURVEYING FIELD NOTES OF ACTUAL SURVEYS MADE BY THE SURVEYOR UNDER SUPERVISION AND THAT THE SAME ARE TRUE AND CORRECT TO THE BEST OF MY KNOWLEDGE AND BELIEF.

REGISTERED SURVEYOR
 JOHN W. HARRIS
 REGISTRATION NO. 1157
 STATE OF KANSAS
 LS-1360

REVISED: 10-14-11 C.C.

UTAH ENGINEERING & LAND SURVEYING
 86 SOUTH 200 EAST - VERNAL, UTAH 84078
 (435) 789-1017

SCALE 1" = 1000'
 DATE SURVEYED: 09-13-11 DATE DRAWN: 09-20-11

PARTY L.S. K.H. J.J.
 WEATHER WARM
 REFERENCES G.L.O. PLAT
 FILE SGOMI

NAD 83 (TARGET BOTTOM HOLE)	NAD 83 (FORMATION ENTRY)	NAD 83 (#25-1H SURFACE LOCATION)
LATITUDE = 37°09'05.60" (37.151556)	LATITUDE = 37°08'24.79" (37.140219)	LATITUDE = 37°08'20.00" (37.138889)
LONGITUDE = 98°21'31.06" (98.356628)	LONGITUDE = 98°21'45.62" (98.362672)	LONGITUDE = 98°21'46.29" (98.362858)
NAD 27 (TARGET BOTTOM HOLE)	NAD 27 (FORMATION ENTRY)	NAD 27 (#25-1H SURFACE LOCATION)
LATITUDE = 37°09'05.51" (37.151531)	LATITUDE = 37°08'24.70" (37.140194)	LATITUDE = 37°08'19.92" (37.138867)
LONGITUDE = 98°21'29.80" (98.358278)	LONGITUDE = 98°21'44.55" (98.362319)	LONGITUDE = 98°21'45.03" (98.362508)