



TRILOBITE TESTING, INC.

DRILL STEM TEST REPORT

Grand Mesa Operating Company

30-16s-32w

1700 N Waterfront PKWY
BLDG 600 Wichita, KS 67206-5514

Wel-Zan 1-30

Job Ticket: 45436

DST#: 3

ATTN: John Goldsmith

Test Start: 2011.12.07 @ 01:15:00

GENERAL INFORMATION:

Formation: **Kansas City "J"**

Deviated: No Whipstock: ft (KB)

Time Tool Opened: 03:55:15

Time Test Ended: 08:04:30

Test Type: Conventional Bottom Hole (Reset)

Tester: Jace McKinney

Unit No: 46

Interval: 4171.00 ft (KB) To 4203.00 ft (KB) (TVD)

Reference Elevations: 2952.00 ft (KB)

Total Depth: 4203.00 ft (KB) (TVD)

2947.00 ft (CF)

Hole Diameter: 7.88 inches Hole Condition: Fair

KB to GR/CF: 5.00 ft

Serial #: 8675

Inside

Press @ Run Depth: 23.82 psig @ 4172.00 ft (KB)

Capacity: 8000.00 psig

Start Date: 2011.12.07

End Date:

2011.12.07

Last Calib.:

2011.12.07

Start Time: 01:15:01

End Time:

08:04:30

Time On Btm:

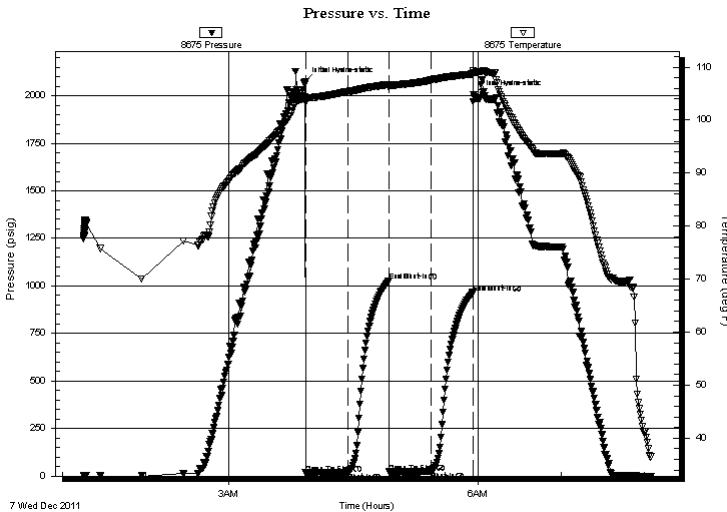
2011.12.07 @ 03:55:00

Time Off Btm:

2011.12.07 @ 05:56:45

TEST COMMENT: Built to 1/2" blow
No return blow
Weak surface blow, Died at 25 min.
No return blow

PRESSURE SUMMARY



Time (Min.)	Pressure (psig)	Temp (deg F)	Annotation
0	2075.14	104.37	Initial Hydro-static
1	17.24	103.39	Open To Flow (1)
31	20.69	105.37	Shut-In(1)
61	1025.88	106.70	End Shut-In(1)
61	21.93	106.09	Open To Flow (2)
91	23.82	107.55	Shut-In(2)
121	965.56	108.69	End Shut-In(2)
122	2004.76	108.97	Final Hydro-static

Recovery

Length (ft)	Description	Volume (bbl)
5.00	100% Mud w ith oil scum	0.02

Gas Rates

	Choke (inches)	Pressure (psig)	Gas Rate (Mcf/d)

* Recovery from multiple tests



**TRILOBITE
TESTING, INC.**

DRILL STEM TEST REPORT

FLUID SUMMARY

Grand Mesa Operating Company

30-16s-32w

1700 N Waterfront PKWY
BLDG 600 Wichita, KS 67206-5514

Wel-Zan 1-30

Job Ticket: 45436

DST#: 3

ATTN: John Goldsmith

Test Start: 2011.12.07 @ 01:15:00

Mud and Cushion Information

Mud Type: Gel Chem

Cushion Type:

Oil API:

deg API

Mud Weight: 9.00 lb/gal

Cushion Length:

ft

Water Salinity:

ppm

Viscosity: 59.00 sec/qt

Cushion Volume:

bbbl

Water Loss: 9.58 in³

Gas Cushion Type:

Resistivity: 0.00 ohm.m

Gas Cushion Pressure:

psig

Salinity: 3100.00 ppm

Filter Cake: 2.00 inches

Recovery Information

Recovery Table

Length ft	Description	Volume bbl
5.00	100% Mud with oil scum	0.025

Total Length: 5.00 ft Total Volume: 0.025 bbl

Num Fluid Samples: 0

Num Gas Bombs: 0

Serial #:

Laboratory Name:

Laboratory Location:

Recovery Comments:

Serial #: 8675

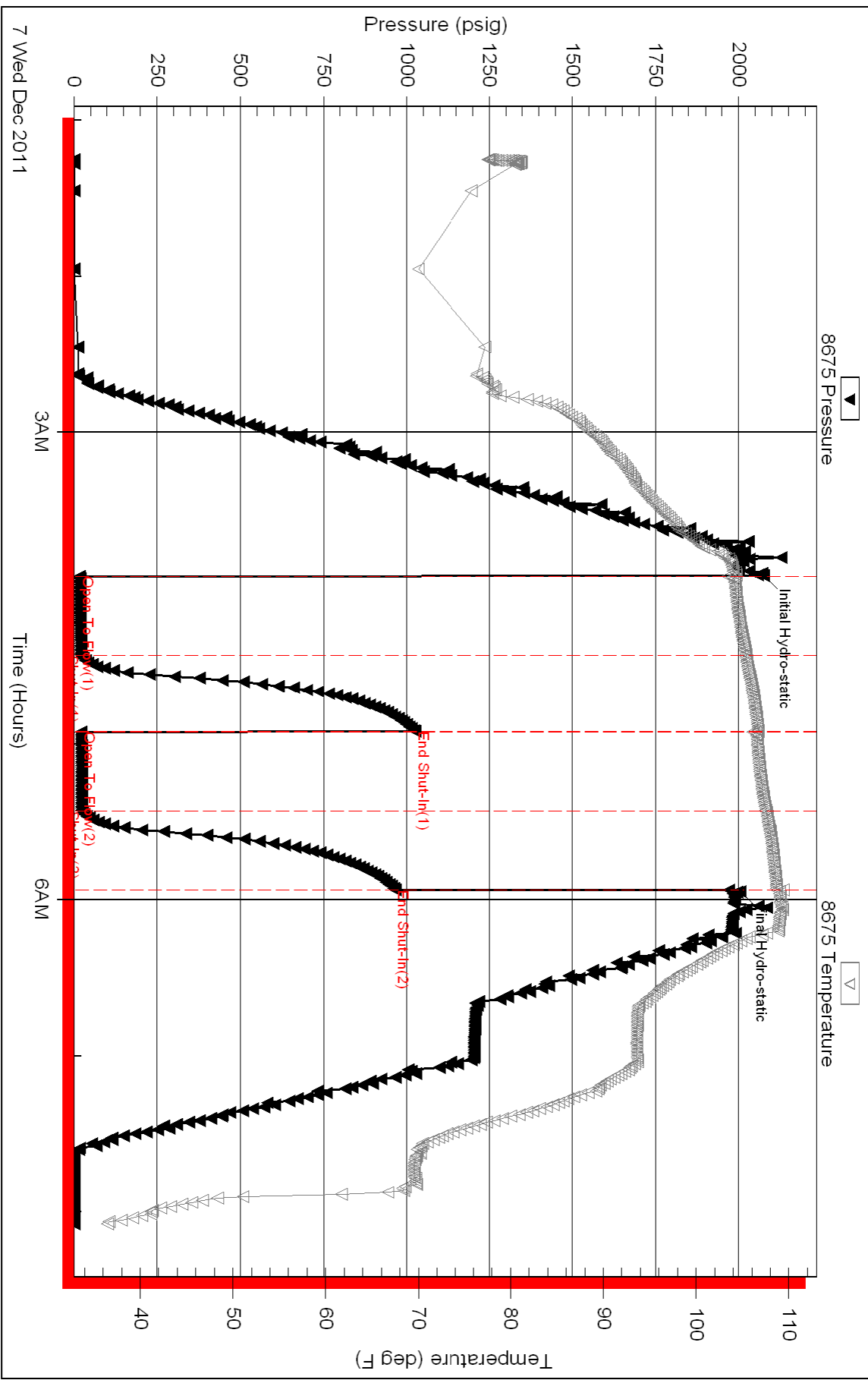
Inside

Grand Mesa Operating Company

Well-Zan 1-30

DST Test Number: 3

Pressure vs. Time



Triobite Testing, Inc

Ref. No: 45436

Printed: 2011.12.07 @ 08:23:50