



TRILOBITE TESTING, INC.

DRILL STEM TEST REPORT

Gand Mesa Operating
 1700 N Waterfront PKWY BLDG 600
 Wichita, Ks 67206
 ATTN: Bob Schreiber

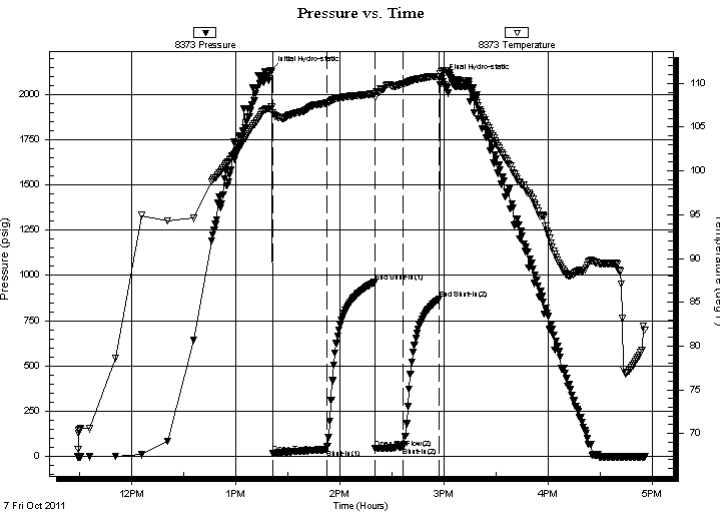
15-16-33 Scott, KS
Doornbos 1-15
 Job Ticket: 43840 **DST#: 4**
 Test Start: 2011.10.07 @ 11:28:44

GENERAL INFORMATION:

Formation: **Marmaton**
 Deviated: No Whipstock: ft (KB)
 Time Tool Opened: 13:21:09
 Time Test Ended: 16:55:38
 Interval: **4361.00 ft (KB) To 4447.00 ft (KB) (TVD)**
 Total Depth: 4447.00 ft (KB) (TVD)
 Hole Diameter: 7.88 inches Hole Condition: Good
 Test Type: Conventional Bottom Hole (Reset)
 Tester: Brandon Turley
 Unit No: 35
 Reference Elevations: 3043.00 ft (KB)
 3038.00 ft (CF)
 KB to GR/CF: 5.00 ft

Serial #: 8373 Inside
 Press@RunDepth: 51.31 psig @ 4362.00 ft (KB) Capacity: 8000.00 psig
 Start Date: 2011.10.07 End Date: 2011.10.07 Last Calib.: 2011.10.07
 Start Time: 11:28:44 End Time: 16:55:38 Time On Btm: 2011.10.07 @ 13:19:54
 Time Off Btm: 2011.10.07 @ 14:58:39

TEST COMMENT: IF: 1/4 blow died in 19 min.
 IS: No return.
 FF: No blow.
 FS: No return.



PRESSURE SUMMARY

Time (Min.)	Pressure (psig)	Temp (deg F)	Annotation
0	2131.77	107.16	Initial Hydro-static
2	18.18	106.66	Open To Flow (1)
33	38.75	107.76	Shut-In(1)
61	963.07	108.86	End Shut-In(1)
61	44.41	108.43	Open To Flow (2)
77	51.31	109.92	Shut-In(2)
98	871.65	110.77	End Shut-In(2)
99	2085.12	111.35	Final Hydro-static

Recovery

Length (ft)	Description	Volume (bbl)
65.00	mud trace of oil 100% ^m	0.32

* Recovery from multiple tests

Gas Rates

Choke (inches)	Pressure (psig)	Gas Rate (Mcf/d)



**TRILOBITE
TESTING, INC.**

DRILL STEM TEST REPORT

FLUID SUMMARY

Gand Mesa Operating

15-16-33 Scott, KS

1700 N Waterfront PKWY BLDG 600
Wichita, Ks 67206

Doornbos 1-15

Job Ticket: 43840

DST#: 4

ATTN: Bob Schreiber

Test Start: 2011.10.07 @ 11:28:44

Mud and Cushion Information

Mud Type: Gel Chem

Cushion Type:

Oil API:

0 deg API

Mud Weight: 9.00 lb/gal

Cushion Length:

ft

Water Salinity:

0 ppm

Viscosity: 58.00 sec/qt

Cushion Volume:

bbbl

Water Loss: 7.80 in³

Gas Cushion Type:

Resistivity: 0.00 ohm.m

Gas Cushion Pressure:

psig

Salinity: 5500.00 ppm

Filter Cake: 1.00 inches

Recovery Information

Recovery Table

Length ft	Description	Volume bbl
65.00	mud trace of oil 100% _m	0.320

Total Length: 65.00 ft Total Volume: 0.320 bbl

Num Fluid Samples: 0

Num Gas Bombs: 0

Serial #:

Laboratory Name:

Laboratory Location:

Recovery Comments:

Serial #: 8373

Inside

Gand Mesa Operating

Doornbos 1-15

DST Test Number: 4

Pressure vs. Time

