



**TRILOBITE TESTING, INC.**

# DRILL STEM TEST REPORT

Gand Mesa Operating  
 1700 N Waterfront PKWY BLDG 600  
 Wichita, Ks 67206  
 ATTN: Bob Schreiber

**15-16-33 Scott, KS**  
**Doornbos 1-15**  
 Job Ticket: 43843 **DST#: 7**  
 Test Start: 2011.10.10 @ 00:46:52

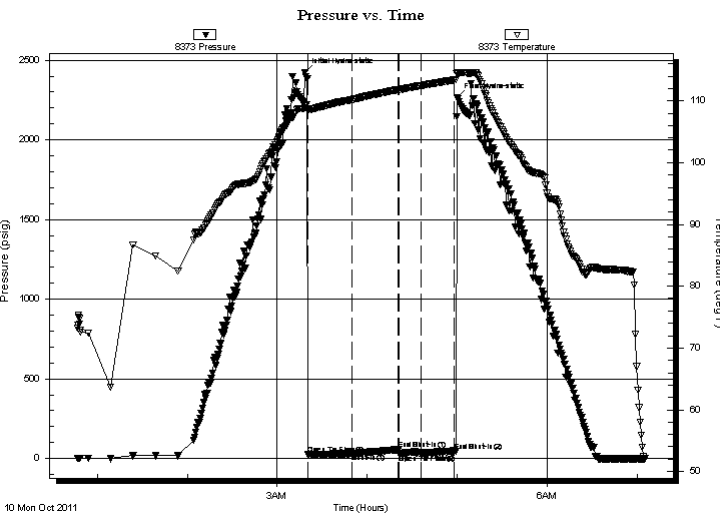
## GENERAL INFORMATION:

Formation: **Marrow sand**  
 Deviated: No Whipstock: ft (KB)  
 Time Tool Opened: 03:20:22  
 Time Test Ended: 07:04:52  
**Interval: 4662.00 ft (KB) To 4712.00 ft (KB) (TVD)**  
 Total Depth: 4712.00 ft (KB) (TVD)  
 Hole Diameter: 7.88 inches Hole Condition: Good  
 Test Type: Conventional Bottom Hole (Reset)  
 Tester: Brandon Turley  
 Unit No: 35  
 Reference Elevations: 3043.00 ft (KB)  
 3038.00 ft (CF)  
 KB to GR/CF: 5.00 ft

## Serial #: 8373

Press @ Run Depth: 39.38 psig @ ft (KB) Capacity: 8000.00 psig  
 Start Date: 2011.10.10 End Date: 2011.10.10 Last Calib.: 2011.10.10  
 Start Time: 00:46:57 End Time: 07:04:51 Time On Btm: 2011.10.10 @ 03:18:22  
 Time Off Btm: 2011.10.10 @ 04:59:52

TEST COMMENT: IF: 1/4 blow died in surface blow.  
 IS: No return.  
 FF: No blow.  
 FS: No return.



## PRESSURE SUMMARY

Time (Min.)	Pressure (psig)	Temp (deg F)	Annotation
0	2423.67	108.88	Initial Hydro-static
2	24.77	108.33	Open To Flow (1)
32	32.61	110.21	Shut-In(1)
63	55.41	111.81	End Shut-In(1)
63	29.25	111.81	Open To Flow (2)
78	39.38	112.46	Shut-In(2)
100	48.09	113.37	End Shut-In(2)
102	2263.12	114.57	Final Hydro-static

## Recovery

Length (ft)	Description	Volume (bbl)
5.00	mud 100% m	0.02

\* Recovery from multiple tests

## Gas Rates

Choke (inches)	Pressure (psig)	Gas Rate (Mcf/d)



**TRILOBITE  
TESTING, INC.**

# DRILL STEM TEST REPORT

**FLUID SUMMARY**

Gand Mesa Operating

**15-16-33 Scott, KS**

1700 N Waterfront PKWY BLDG 600  
Wichita, Ks 67206

**Doornbos 1-15**

Job Ticket: 43843

**DST#: 7**

ATTN: Bob Schreiber

Test Start: 2011.10.10 @ 00:46:52

## Mud and Cushion Information

Mud Type: Gel Chem

Cushion Type:

Oil API:

0 deg API

Mud Weight: 9.00 lb/gal

Cushion Length:

ft

Water Salinity:

0 ppm

Viscosity: 58.00 sec/qt

Cushion Volume:

bbbl

Water Loss: 6.40 in<sup>3</sup>

Gas Cushion Type:

Resistivity: 0.00 ohm.m

Gas Cushion Pressure:

psig

Salinity: 4900.00 ppm

Filter Cake: 1.00 inches

## Recovery Information

Recovery Table

Length ft	Description	Volume bbl
5.00	mud 100%m	0.025

Total Length: 5.00 ft      Total Volume: 0.025 bbl

Num Fluid Samples: 0

Num Gas Bombs: 0

Serial #:

Laboratory Name:

Laboratory Location:

Recovery Comments:

