



TRILOBITE TESTING, INC.

DRILL STEM TEST REPORT

Gand Mesa Operating
 1700 N Waterfront PKWY BLDG 600
 Wichita, Ks 67206
 ATTN: Bob Schreiber

15-16-33 Scott, KS
Doornbos 1-15
 Job Ticket: 43844 **DST#: 8**
 Test Start: 2011.10.10 @ 17:25:54

GENERAL INFORMATION:

Formation: **Miss**
 Deviated: No Whipstock: ft (KB)
 Time Tool Opened: 19:23:04
 Time Test Ended: 01:41:33
 Interval: **4717.00 ft (KB) To 4768.00 ft (KB) (TVD)**
 Total Depth: 4768.00 ft (KB) (TVD)
 Hole Diameter: 7.88 inches Hole Condition: Good
 Test Type: Conventional Bottom Hole (Reset)
 Tester: Brandon Turley
 Unit No: 35
 Reference Elevations: 3043.00 ft (KB)
 3038.00 ft (CF)
 KB to GR/CF: 5.00 ft

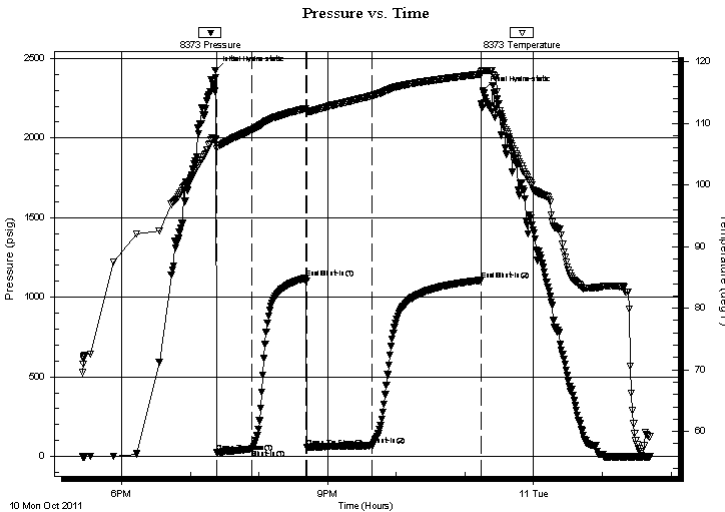
Serial #: 8373

Inside

Press @ Run Depth: 68.94 psig @ 4718.00 ft (KB)
 Start Date: 2011.10.10 End Date: 2011.10.11
 Start Time: 17:25:54 End Time: 01:41:33
 Capacity: 8000.00 psig
 Last Calib.: 2011.10.11
 Time On Btm: 2011.10.10 @ 19:21:49
 Time Off Btm: 2011.10.10 @ 23:15:48

TEST COMMENT: IF: 1/4 blow built to 6 in 30 min.
 IS: No return.
 FF: 1/4 blow BOB in 38 min.
 FS: Surface blow built to 2 in 90 min.

PRESSURE SUMMARY



Time (Min.)	Pressure (psig)	Temp (deg F)	Annotation
0	2424.67	107.58	Initial Hydro-static
2	24.93	105.96	Open To Flow (1)
32	46.41	108.96	Shut-In(1)
80	1120.95	112.46	End Shut-In(1)
80	58.23	111.95	Open To Flow (2)
137	68.94	114.51	Shut-In(2)
232	1106.87	118.01	End Shut-In(2)
234	2297.36	118.62	Final Hydro-static

Recovery

Length (ft)	Description	Volume (bbl)
90.00	gocm 10%g 10%o 80%m	0.44
60.00	oil 100%o	0.58
0.00	217 GIP	0.00

* Recovery from multiple tests

Gas Rates

Choke (inches)	Pressure (psig)	Gas Rate (Mcf/d)



**TRILOBITE
TESTING, INC.**

DRILL STEM TEST REPORT

FLUID SUMMARY

Gand Mesa Operating
1700 N Waterfront PKWY BLDG 600
Wichita, Ks 67206
ATTN: Bob Schreiber

15-16-33 Scott, KS
Doornbos 1-15
Job Ticket: 43844 **DST#: 8**
Test Start: 2011.10.10 @ 17:25:54

Mud and Cushion Information

Mud Type: Gel Chem	Cushion Type:	Oil API: 28 deg API
Mud Weight: 9.00 lb/gal	Cushion Length: ft	Water Salinity: 0 ppm
Viscosity: 51.00 sec/qt	Cushion Volume: bbl	
Water Loss: 9.97 in ³	Gas Cushion Type:	
Resistivity: 0.00 ohm.m	Gas Cushion Pressure: psig	
Salinity: 5500.00 ppm		
Filter Cake: 1.00 inches		

Recovery Information

Recovery Table

Length ft	Description	Volume bbl
90.00	gocm 10%g 10%o 80%m	0.443
60.00	oil 100%o	0.577
0.00	217 GIP	0.000

Total Length: 150.00 ft Total Volume: 1.020 bbl
Num Fluid Samples: 0 Num Gas Bombs: 0 Serial #:
Laboratory Name: Laboratory Location:
Recovery Comments: 28@60=28

Serial #: 8373

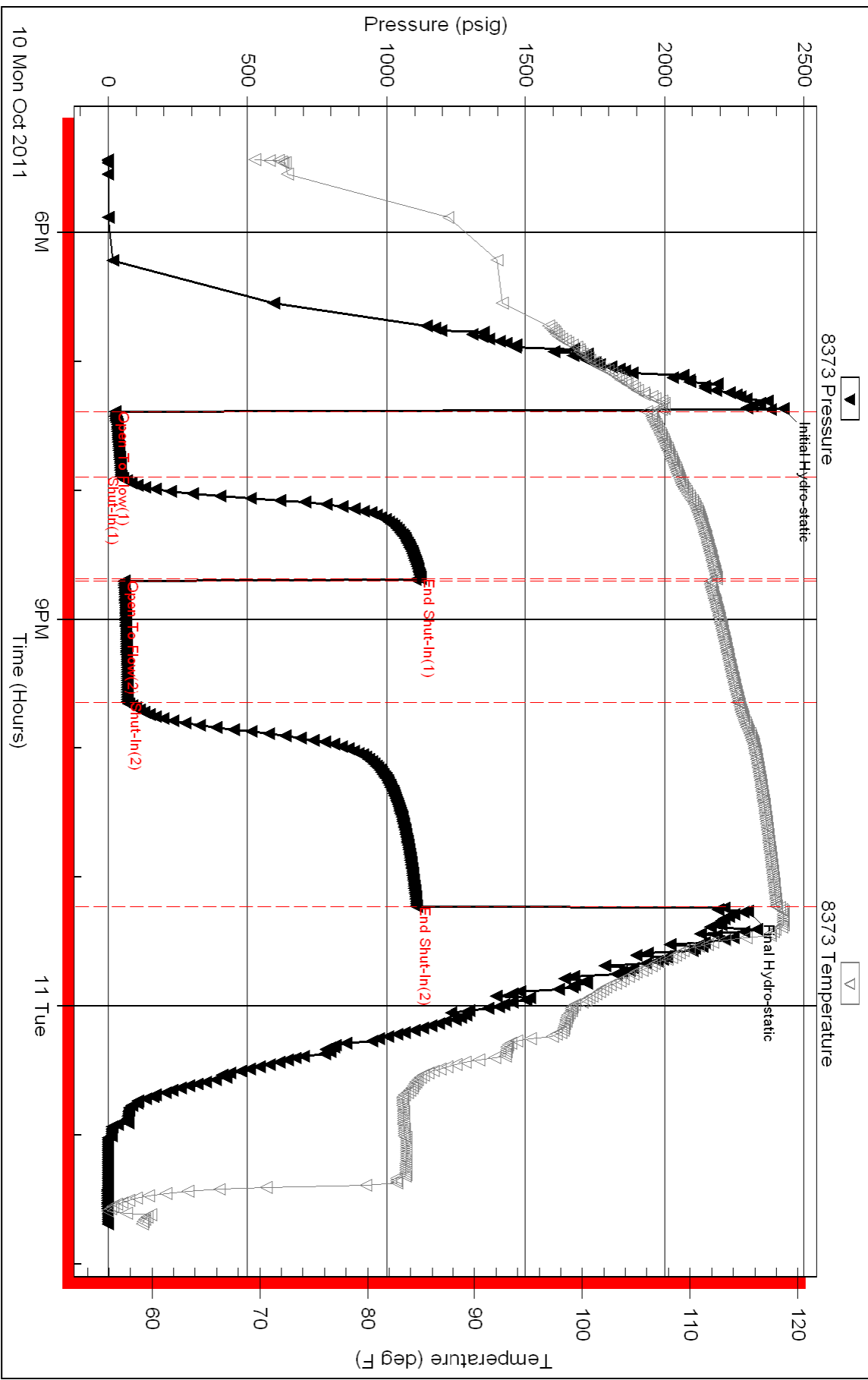
Inside

Gand Mesa Operating

Doorbros 1-15

DST Test Number: 8

Pressure vs. Time



Triobite Testing, Inc

Ref. No: 43844

Printed: 2011.10.11 @ 07:38:57