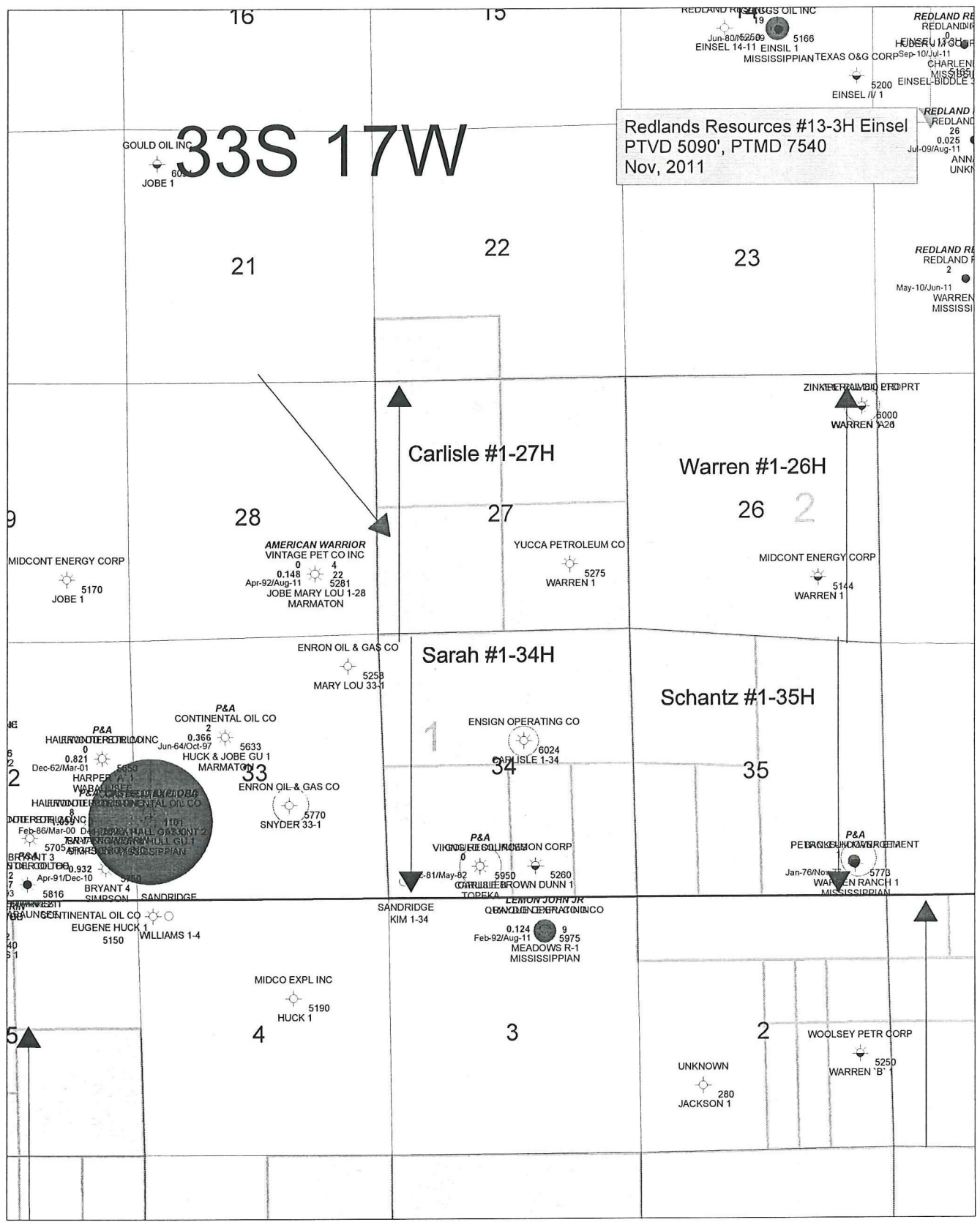



33S 17W

Redlands Resources #13-3H Einsel
PTVD 5090', PTMD 7540
Nov, 2011



- Mississippi Gas Production
- Mississippi Oil Production

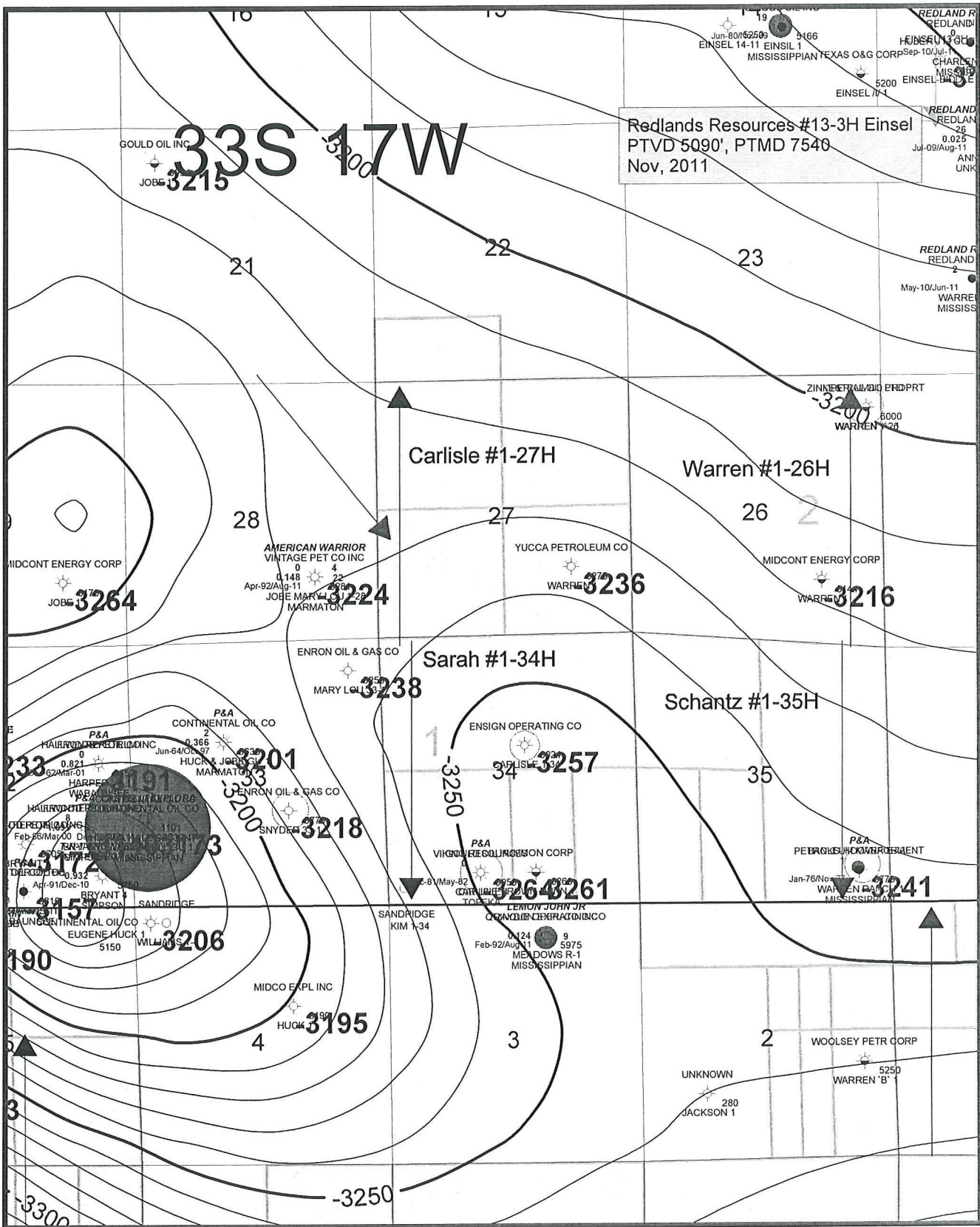


Carlisle #1-27H
34 & 27-T33S-R17W
Comanche County, KS

Location/Production Map

Carlisle #1-27H Loc# Prod Map 12-28-11 KG ysp

Date: 28 December, 2011 | Geologist: K. Gentry



- Mississippi Gas Production
- Mississippi Oil Production

SANDRIDGE
THE ENERGY GROUP

Carlisle #1-27H
34 & 27-33S-R17W
Comanche County, KS

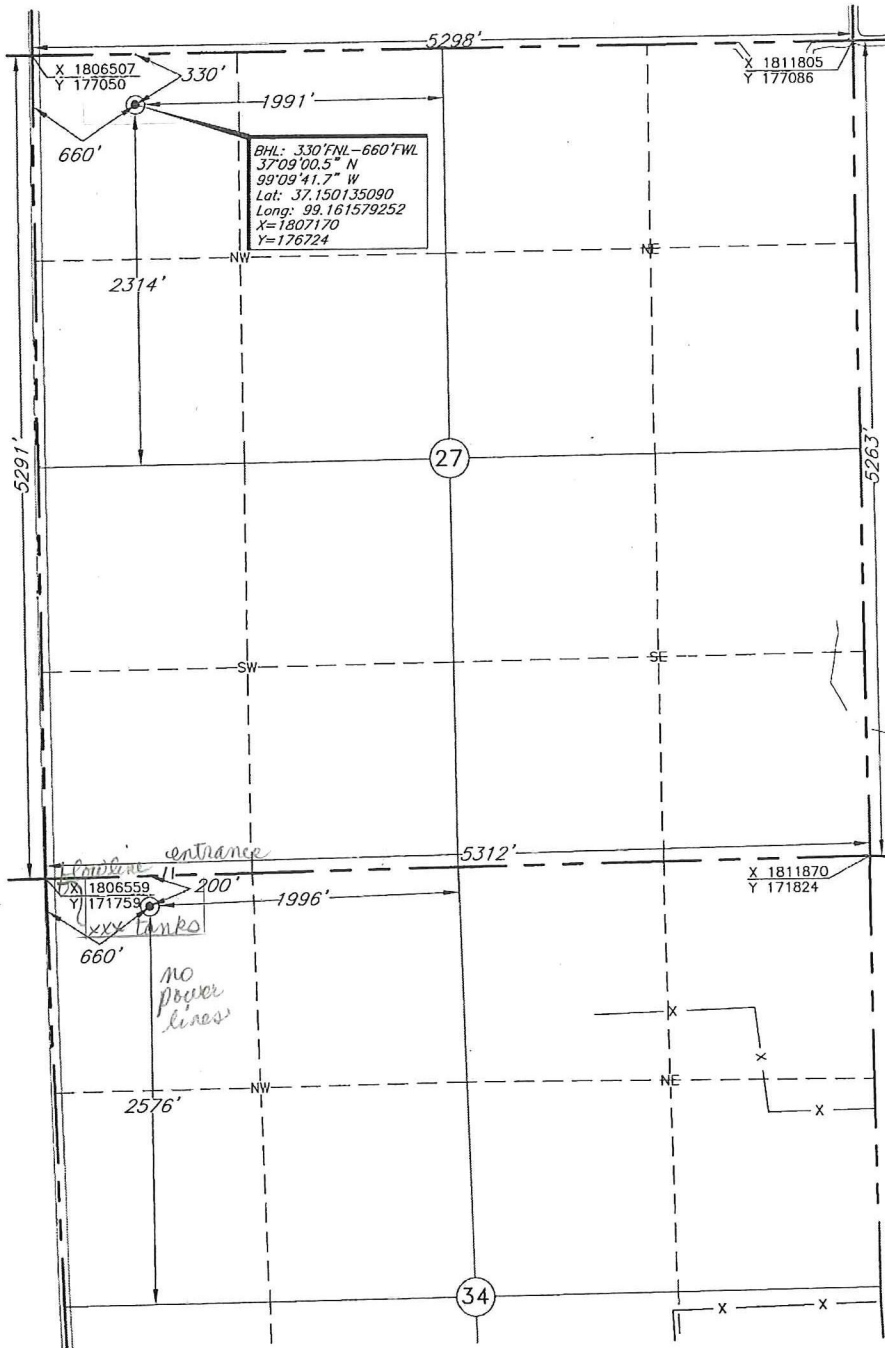
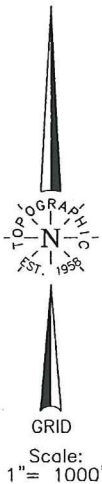
Structure Map - T, Mississippi Unconformity
CI = 10'

Circle #1-27H S1 Map T Max Uncert 12-28-11 KG gpp
Date: 28 December, 2011 | Geologist: K. Gentry

TOPOGRAPHIC LAND SURVEYORS

6709 NORTH CLASSEN BLVD., OKLA. CITY, OKLA. 73116 * LOCAL (405) 843-4847 * OUT OF STATE (800) 654-3219
 Certificate of Authorization No. LS-99, Exp. Dec 31, 2011
 COMANCHE County, Kansas

200' FNL - 660' FWL Section 34 Township 33S Range 17W P.M.



This location has been very carefully staked on the ground according to the best official survey records, maps, and photographs available to us, but its accuracy is not guaranteed. Review this plat and notify us immediately of any possible discrepancy.

Operator: SANDRIDGE ENERGY, INC.
 Lease Name: CARLSLE
 Topography & Vegetation Loc. fell in level pasture
 Good Drill Site? Yes
 Best Accessibility to Location From West
 Distance & Direction From Hwy Jct or Town From the Jct. of US. Hwy. 183 North & US. Hwy. 183 West South of Coldwater, Ks. go 2 miles North on US. Hwy. 183, then 9 miles East, then 6 miles South to the NW Cor. of Sec. 34-133S-17W

Distances shown in (parenthesis) are calculated based upon the Quarter Section being 2640 feet, and have not been measured.

Well No.: 1-27H
 ELEVATION: 1832' Gr. at Stake

BOTTOM HOLE INFORMATION PROVIDED BY OPERATOR LISTED. CORNER COORDINATES ARE TAKEN FROM POINTS SURVEYED IN THE FIELD.

Revision A Date of Drawing: Sep. 16, 2011
 Invoice # 172031A Date Staked: Sep. 13, 2011 LC

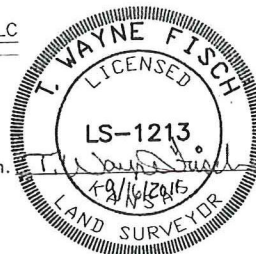
CERTIFICATE:

I, T. Wayne Fisch a Registered Land Surveyor and an authorized agent of Topographic Land Surveyors, do hereby certify that the above described well location was surveyed and staked on the ground as shown herein.

Kansas Reg. No. 1213

The following information was gathered using a GPS receiver Accuracy ±2-3 Meters.

DATUM: NAD-27
 LAT: 37°08'09.5"N
 LONG: 99°09'40.5"W
 LAT: 37.135973184
 LONG: 99.161265075
 STATE PLANE COORDINATES:
 ZONE: KS SOUTH
 X: 1807225
 Y: 171567



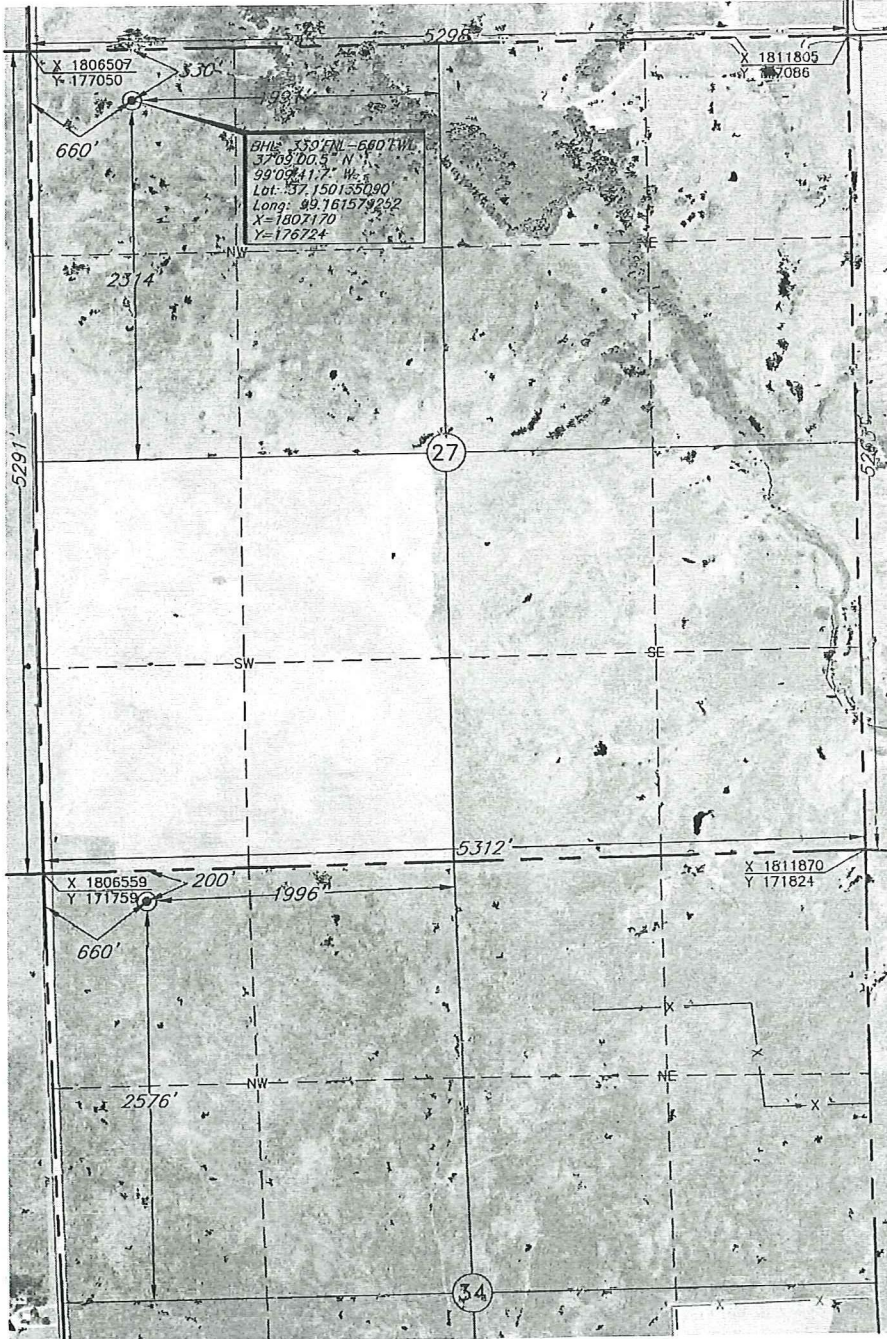
TOPOGRAPHIC LAND SURVEYORS

6709 NORTH CLASSEN BLVD., OKLA. CITY, OKLA. 73116 * LOCAL (405) 843-4847 * OUT OF STATE (800) 654-3219
 Certificate of Authorization No. LS-99, Exp. Dec 31, 2011

COMANCHE

County, Kansas

200' FNL - 660' FWL Section 34 Township 33S Range 17W P.M.



This location has been very carefully staked on the ground according to the best official survey records, maps, and photographs available to us, but its accuracy is not guaranteed. Review this plot and notify us immediately of any possible discrepancy.

Operator: SANDRIDGE ENERGY, INC.

Lease Name: CARLISLE

Topography & Vegetation Loc. fell in level pasture

Good Drill Site? Yes Reference Stakes or Alternate Location Stakes Set None

Best Accessibility to Location From West

Distance & Direction from Hwy Jet or Town From the Jct. of US. Hwy. 183 North & US. Hwy. 183 West South of Coldwater, Ks. go 2 miles North on US. Hwy. 183, then 9 miles East, then 6 miles South to the NW Cor. of Sec. 34-133S-17W

Distances shown in (parenthesis) are calculated based upon the Quarter Section being 2640 feet, and have not been measured.

Well No.: 1-27H

ELEVATION: 1832' Gr. at Stake

BOTTOM HOLE INFORMATION PROVIDED BY OPERATOR LISTED. CORNER COORDINATES ARE TAKEN FROM POINTS SURVEYED IN THE FIELD.

Revision A Date of Drawing: Sep. 16, 2011
 Invoice # 172031A Date Staked: Sep. 13, 2011 LC

CERTIFICATE:

I, T. Wayne Fisch a Registered Land Surveyor and an authorized agent of Topographic Land Surveyors, do hereby certify that the above described well location was surveyed and staked on the ground as shown herein.

Kansas Reg. No. 1213



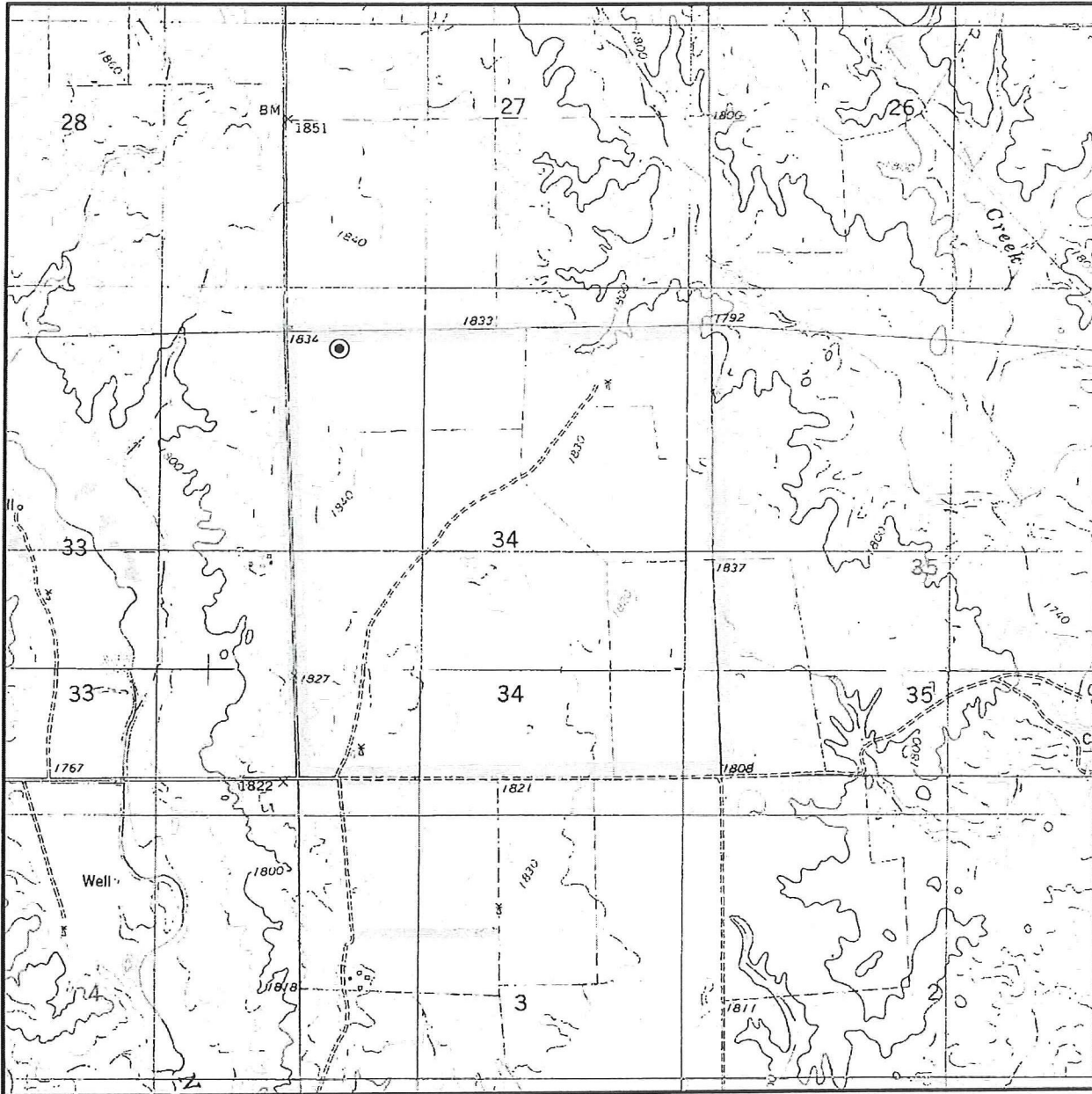
The following information was gathered using a GPS receiver Accuracy ±2-3 Meters.

DATUM: NAD-27
 LAT: 37°08'09.5\"/>

TOPOGRAPHIC LAND SURVEYORS

Surveying and Mapping for the Energy Industry
 6709 North Classen Blvd. Oklahoma City, OK 73116 www.topographic.com
 Telephone Numbers: Local (405) 843-4847 Toll Free (800) 654-3219

LOCATION & ELEVATION VERIFICATION MAP



Sec. 34 Twp. 33S Rng. 17W

County COMANCHE State KS

Operator SANDRIDGE ENERGY, INC.

Description 200'FNL-660'FWL

Lease CARLISLE 1-27H

Elevation 1832' Gr. at Stake

U.S.G.S. Topographic
 Quadrangle Map NESCATUNGA CREEK NORTH, KS

Above Background Data from
 U.S.G.S. Topographic Map
 Scale: 1"=2000'

Contour Interval 20'

This location has been very carefully staked on the ground according to the best official survey records, maps and photographs available to us, but its accuracy is not guaranteed. When elevation is shown hereon it is the ground elevation of the location stake. Review this plat and inform us immediately of any possible discrepancy.

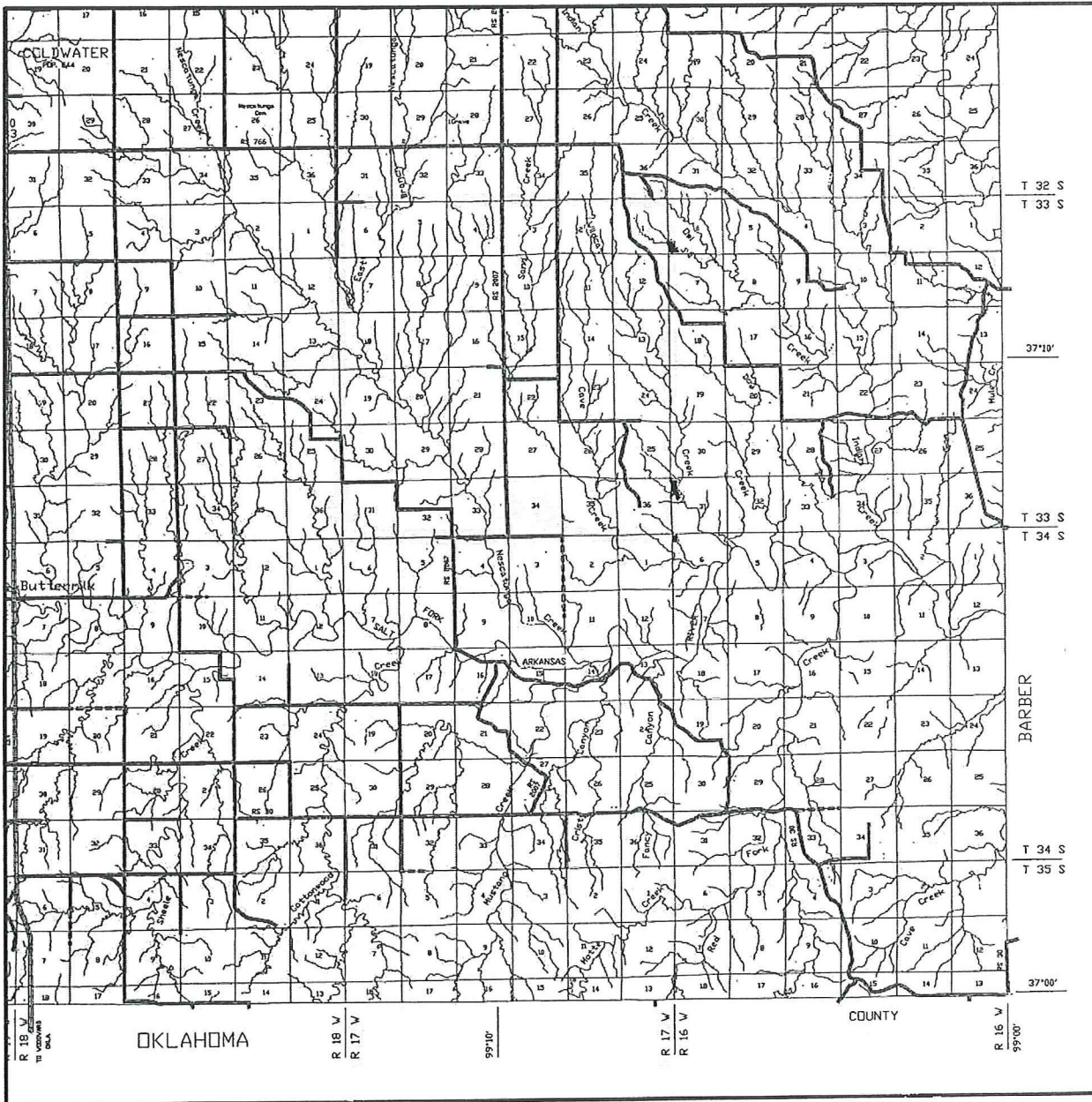
TOPOGRAPHIC
 SURVEYING • MAPPING • GIS • GPS

Sep. 13, 2011

TOPOGRAPHIC LAND SURVEYORS

Surveying and Mapping for the Energy Industry
 6709 North Classen Blvd. Oklahoma City, OK 73116 www.topographic.com
 Telephone Numbers: Local (405) 843-4847 Toll Free (800) 654-3219

VICINITY MAP



Scale: 1" = 3 Miles

Sec. 34 Twp. 33S Rng. 17W

County COMANCHE State KS

Operator SANDRIDGE ENERGY, INC.

TOPOGRAPHIC
 SURVEYING • MAPPING • GIS • GPS