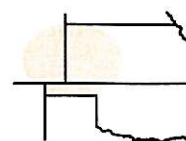


**Pro-Stake LLC**  
 Oil Field & Construction Site Staking  
 P.O. Box 2324  
 Garden City, Kansas 67846  
 Office/Fax: (620) 276-6159  
 Cell: (620) 272-1499



**e110611r**  
 PLAT NO.

**9664**  
 INVOICE NO.

**Oil Producers Inc. of Kansas**

OPERATOR

**Seward Co, Ks**

COUNTY

**4 34s 31w**  
 Sec. Twp. Rng.

**Hayes #1-4**

LEASE NAME

**Main loc. = 1980'FSL -660'FEL = 2598.3' gr.elev.**  
**Alt. #1 = 2050'FSL-731'FEL = 2601.9' gr. elev.**  
**Alt. #2 = 1910'FSL -589'FEL = 2606.4' gr. elev.**

LOCATION SPOT

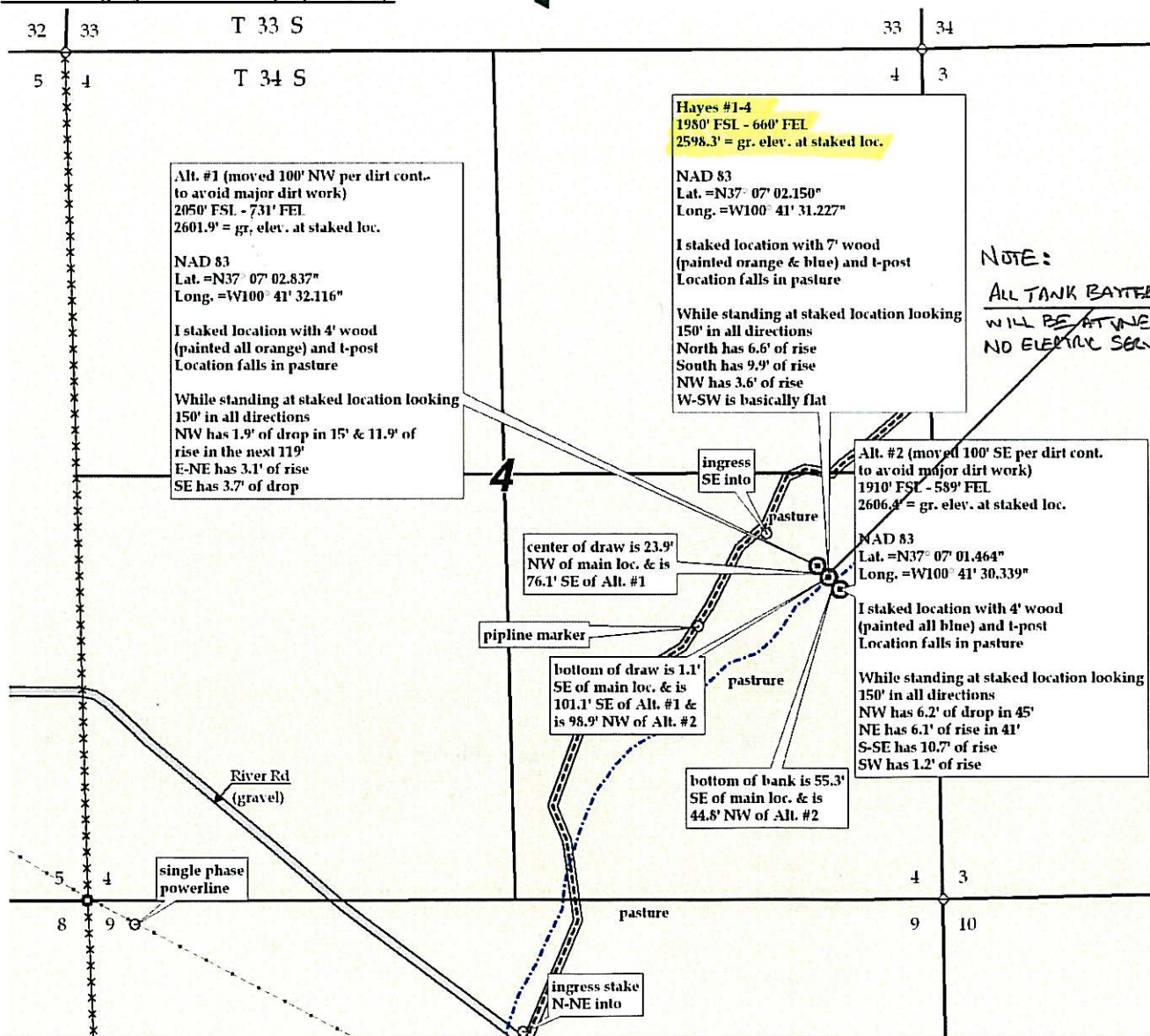
SCALE: **1" = 1000'**  
 DATE STAKED: **Nov. 4<sup>th</sup>, 2011**  
 MEASURED BY: **Luke R.**  
 DRAWN BY: **Luke R**  
 AUTHORIZED BY: **Lori Z. & dirt cont.**



**Directions:** From the South side of Kismet Ks at the intersection of Hwy 54 & Main St./ V Rd – Now go 4.4 miles SW on Hwy 54 – Now go 4.1 miles SE on River Rd to ingress stake N-NE into – Now go 0.7 mile N-NE on trail – Now go approx. 510' SE through pasture into main staked location.  
**Final ingress must be verified with land owner or Operator.**

*This drawing does not constitute a monumented survey or a land survey plat.*

*This drawing is for construction purposes only.*



**NOTE:**  
 ALL TANK BATTERY  
 WILL BE AT INLET HEAD  
 NO ELECTRIC SERVICE