

GEOLOGICAL REPORT

Larry A. Nicholson

COMPANY **Abercrombie Energy, LLC.**
API # **15-167-23758** FIELD **Wildcat**

LEASE **Dietz #2-11** WELL # **2-11**
LOCATION **NE NW SW SE approx**

SURVEY **1996/FEL 1168' FSL**
SECTION **11** TWP **15S** RGE **15W**
COUNTY **Russell** STATE **Kansas**

CONTRACTOR **Val** Rig # **6**
SPUD **11/30/2011 9:30 pm** COMP **K.B. 1750'**
RTD **3280' 12/08/11 8:25 am** LTD **3280'**
MUD UP AT **2500'**
MUD TYPE **Chemical - Mud Co. Gary Schmidtberger**

SAMPLES SAVED FROM **2600'** TO **TD**
DRILLING TIME FROM **2600'** TO **TD**
SAMPLES EXAMINED FROM **2600'** TO **TD**
GEOLOGICAL SUPERVISOR FROM **2600'** TO **TD**
WELLSITE GEOLOGIST **LARRY A. NICHOLSON**

ELEVATIONS
K.B. 1750'
D.F. 1740'
G.L. 1740'
All measurements from K.B. 1750'

CASING RECORD
Surface of 8.5\" 23\" w/ 450' sx
Production of 8.5\" 23\" w/ 450' sx

ELECTRICAL SURVEYS **LogTech - Radiation guard**

FORMATION TOPS SUBSEA DATUM ELEC LOG TOPS SURSEA DATUM REFERENCE WELL

FORMATION	SAMPLE TOPS	SUBSEA DATUM	ELEC LOG TOPS	SURSEA DATUM	REFERENCE WELL	
Anhydrite	786	+964	784	+962	797 -965	793 -962
B/Anhydrite	821	+929	823	+927	834 -928	830 -925
Heebner	2910	-1160	2911	-1161	2922 -1160	2914 -1159
Lansing	2971	-1221	2972	-1219	2961 -1219	2980 -1225
Stark	3142	-1392	3144	-1394	3155 -1393	3148 -1393
BKC	3193	-1443	3194	-1444	3207 -1445	3197 -1442
Arbuckle	3223	-1473	3224	-1474	3248 -1486	3262 -1507
RTD	3280	-1530	3280	-1530	3300	3365
LTD			3280	-1530	3301	3363

A: **Abercrombie Dietz #1-11 11-15S-15W 2270' FSL 2970' FWL (1762 KB)**
B: **Imperial Oil Co. Dietz A#1 11-15S-15W SW SW SW (1755 KB)**

DRILL STEM TESTS

No.	Interval	IFP/Time	ISIP/Time	FFP/Time	FSIP/Time	IHH/FHH	Recovery
1	2937 to 2985 LKC "A"	30" 23-26 weak blow 1/4" blow	30" 116 No blow back	30" 25-26 No blow back	30" 57 No blow back	IHP: 1419 FHP: 1397	Rec Total 5' Mud
2	3025 to 3067 LKC "E,F,G"	30" 29-36 weak blow 1/4" to 1 1/4" blow	45" 832 no blow back	60" 36-47 weak blow 1/4" blow	78" 489 no blow back	IHP: 1472 FHP: 1430	Rec Total 55' M w/ show of oil
3	3100 to 3144 LCK "L"	30" 23-46 weak to gd blow 1/2" to 6" blow	45" 753 no blow back	60" 49-79 weak blow 1/2" to 1" blow	62" 627 no blow back	IHP: 1496 FHP: 1453	Rec Total 120' 60' MW w/ show of oil 80%W, 20%M 60' water
4	3140 to 3162 LCK "K"	30" 17-37 weak blow 1/2" 1/2" blow	45" 909 no blow back	60" 39-65 weak blow 1/2" 1/2" blow	85" 855 no blow back	IHP: 1513 FHP: 1501	Rec Total 105' 105' water w/ show of CO on top of fluid
5	3187 to 3237 Arbuckle	30" 29-146 weak blow to strong in 6"	45" 1091 no blow back	60" 153-338 weak blow to strong in 30"	107" 1077 no blow back	IHP: 1551 FHP: 1546	Rec Total 690' 190' MW, 80%W, 20%M 500' W
6							
7							

REMARKS AND RECOMMENDATIONS:
Based on sample shows, dst results, well was P&A

LAN 7/92, Modified 5/05, 11/11, Hanover, KS 66945 1inch = 25.4mm 8.5 x 9.5 216 mm x 2460 mm

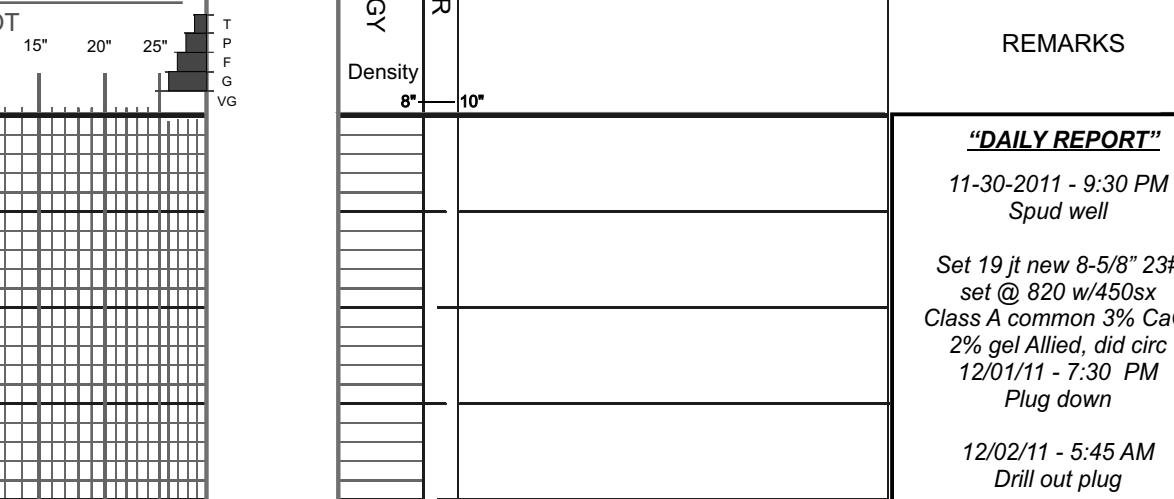
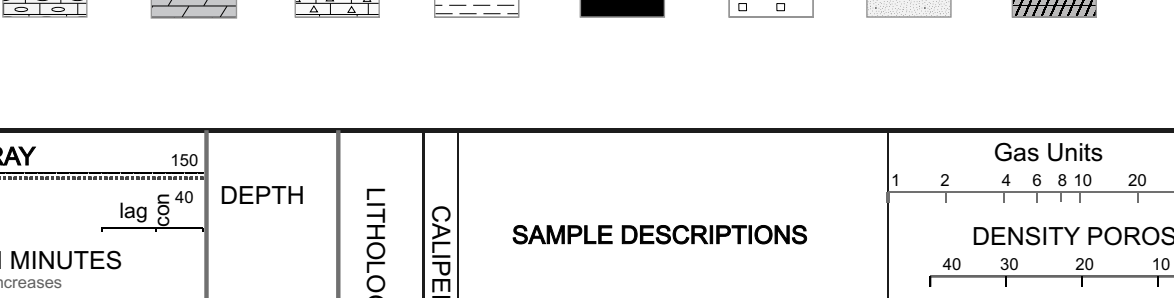
Spud 9:30 PM 11-30-2011
RTD 8:25 PM 12-08-2011

"BIT RECORD"
1) 12 1/4" n/s Surf-920'
2) 7 7/8" OX20 sur 124902
3) 7 7/8" OX20 sur 5086133RR

"VERTICAL SURVEYS"
5' @ 820'
1.0' @ 2985
.75' @ 3280

"PUMP DATA"
Ellis-Williams
Stroke 15', Liner 6"

LEGEND



DEPTH
LITHOLOGY
CALIBER
SAMPLE DESCRIPTIONS
REMARKS

"DAILY REPORT"
11-30-2011 - 9:30 PM
Spud well

Set 19 ft new 8-5/8" 23# set @ 820 w/450sx Class A common 3% CaCl 2% gel Allied, old circ 12/01/11 - 7:30 PM Plug down

12/02/11 - 5:45 AM Drill out plug

12-03-2011 - 7:00 AM Drig @ 2115

12-04-2011 - 7:00 AM Drig @ 2938'

12-05-2011 - 7:00 AM TOH bit @ 3014

12-06-2011 - 7:00 AM CFS @ 3110

12-07-2011 - 7:00 AM Dst #3 @ 3162'

12-08-2011 - 7:00 AM TH @ 3237

12-08-2011 - 8:25 AM RTD @ 3280'

Logging LogTech
Plug w 190 sx, 60/40 Poz, 4% gel, 1.14H per sx flow seal: 25 sx @ 3205' (20' above arbuckle top), 25 sx @ 909', 85 sx @ 400', 10 sx @ solid wiper plug @ 400', 30 sx @ raffole, 15 sx @ mousehole. By Allied. 1st plug @ 8:00 pm. Final plug down @ 11:30 pm on 12/8/2011.

DST (1) 2937-2985 LKC "A" 30-30-30-30
IF: weak blow 1/4" IS: no blow back FF: weak blow 1/4" FS: no blow back Rec Total Fluid: 5' Mud

Mud Check at 2953: vis: 51 wt 9.0 Chlor: 3,700 LCM: 1.0 Ph: 11.0 WL: 6.8

DST (2) 3025-3067 LKC "E-F-G" 30-45-60-45
IF: weak blow 1/2" to 1 1/4" IS: no blow back FF: weak blow 1/2" to 1 1/4" FS: no blow back Rec Total Fluid: 55' Mud

Mud Check at 3014: vis: 53 wt 9.1 Chlor: 3,900 LCM: 1.0 Ph: 11.0 WL: 6.8

DST (3) 3100-3144 LKC "L" 30-45-60-45
IF: weak to gd blow 1/2" to 6" IS: no blow back FF: weak blow 1/2" to 1 1/2" FS: no blow back Rec Total Fluid: 120' fluid 60' MW w/ show of oil 80%W 20%M

Mud Check at 3109: vis: 54 wt 9.1 Chlor: 3,900 LCM: 1.0 Ph: 10.5 WL: 7.2

DST (4) 3140-3162 LKC "K" 30-45-60-45
IF: weak to gd blow 1/2" to 1 1/2" IS: no blow back FF: weak blow 1/2" to 1 1/2" FS: no blow back Rec Total Fluid: 105' water w/ show of CO on top of fluid

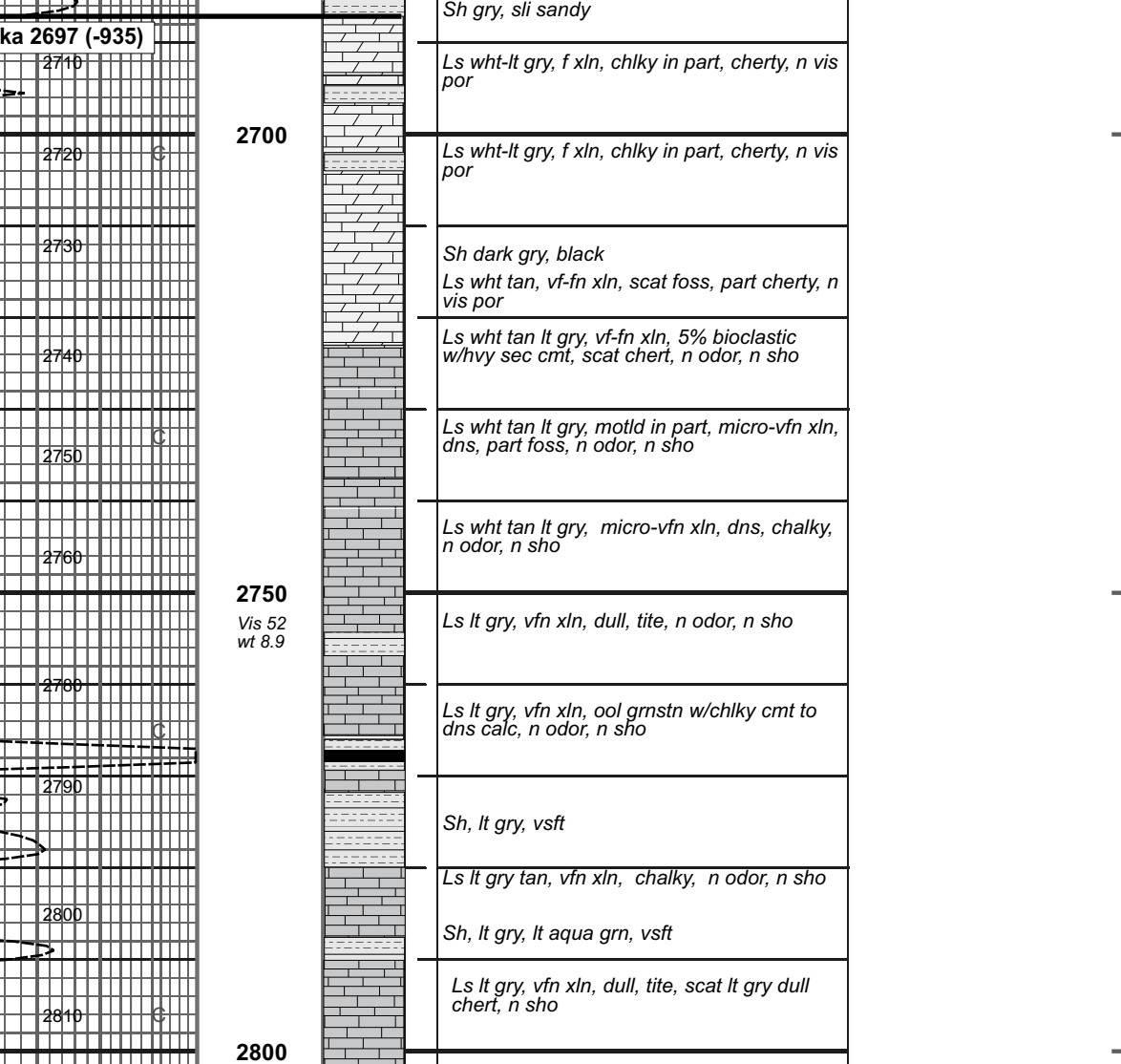
Mud Check at 3162: vis: 48 wt 9.1 Chlor: 4,000 LCM: trc Ph: 10.0 WL: 7.8

DST (5) 3187-3237 Arbuckle 30-45-60-45
IF: weak blow to strong in 6" IS: no blow back FF: weak blow to strong in 30" FS: no blow back Rec Total Fluid: 690' 170' MW, 80%W, 20%M 500' W

Mud Check at 3237: vis: 55 wt 9.1 Chlor: 4,000 LCM: trc Ph: 10.0 WL: 7.8

Pipe Strap: Board 3298.42 Strap 3299.46 Strap long 1.04

Drillstem Test Charts



GAMMA RAY
DRILLING TIME IN MINUTES/FOOT
DEPTH
LITHOLOGY
CALIBER
SAMPLE DESCRIPTIONS
REMARKS

COMPANY **Abercrombie Energy, LLC.** ELEVATIONS
LEASE **Dietz #2-11 approx NE NW SW SE** K.B. 1750'
LOCATION **1996' FEL 1168' FSL SEC 11 TWP 15S RGE 15W** D.F. 1740'
COUNTY **Russell** STATE **KS** G.L. 1740'
All measurements from K.B. 1750'