

Garber Surveying Service, P.A.



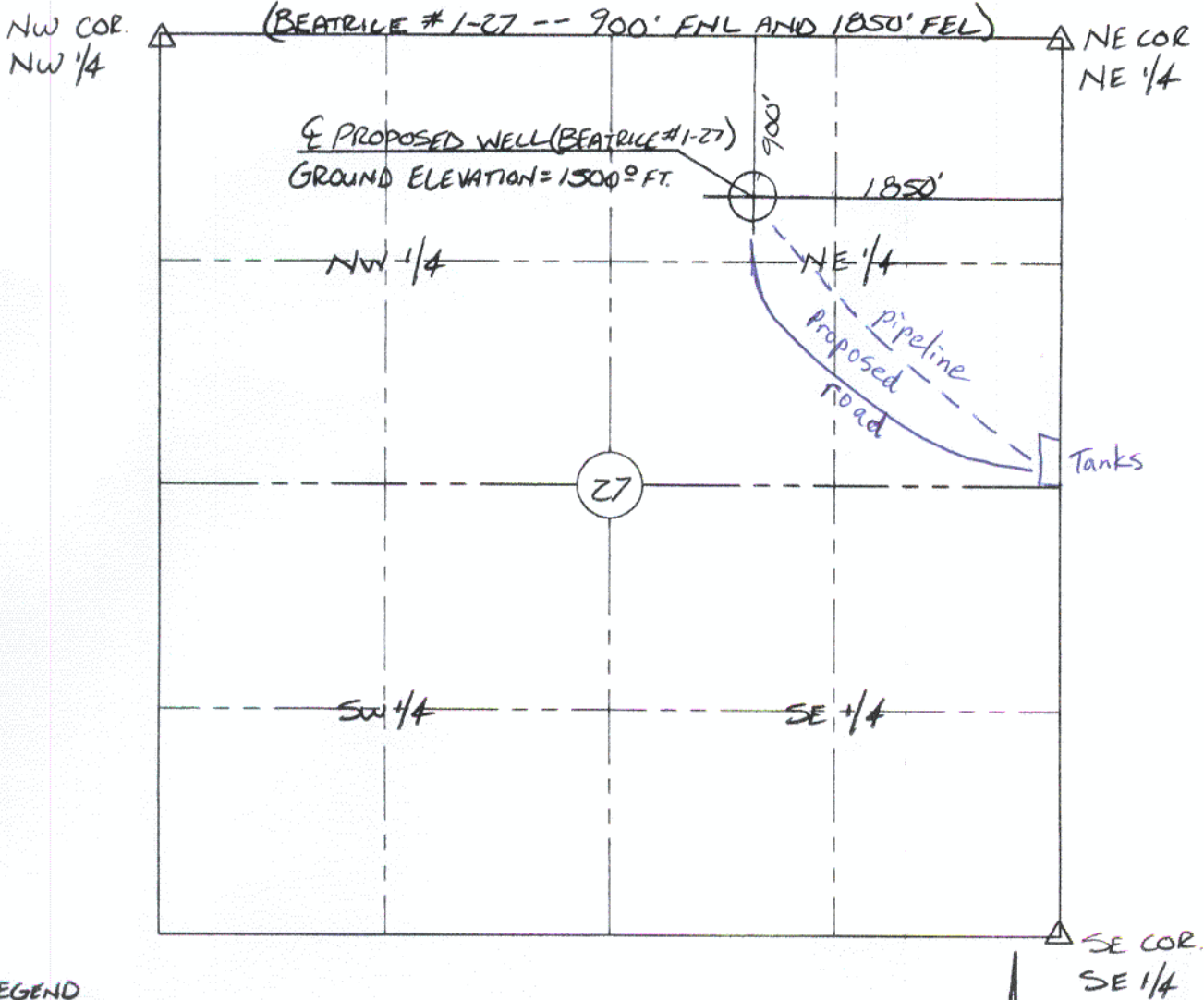
2908 North Plum St.
Hutchinson, Kansas 67502
Phone 620 665-7032 • FAX 620 663-7401

115 East Marlin
McPherson, Kansas 67460
Phone 620-241-4441 • FAX 620-241-4458

Project No. G11-0728

SURVEY FOR: HESS OIL COMPANY BEATRICE #1-27

SECTION 27, T 18 S, R 01 E



LEGEND

- △ APPARENT SECTION CORNER
- ⊕ CENTERLINE OF PROPOSED WELL

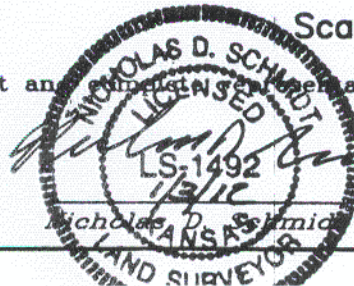
SURVEYOR'S NOTES:

- 1) ELEVATION SHOWN IN "NAVD88" DATUM - DATUM BENCHMARK = THE NE CORNER SECTION 27-18-01E. ELEVATION = 1490 FT FROM USGS QUAD MAP
- 2) APPARENT SECTION CORNER POSITIONS DETERMINED BY FIELD EVIDENCE

DATE OF FIELD WORK: 12/30/11

SURVEYOR'S CERTIFICATE:

I hereby certify this plat to be a true, correct and accurate representation of the property described above as surveyed under my supervision.



Scale: 1"=1000'