

108 W. 35th ST.
PH: 785-625-3380
HAYS, KS 67601

HERB DENES
CONSULTING GEOLOGIST

COMPANY **IDI, Inc**
WELL **Charlotte #2**

FIELD **Ellis** STATE **Kansas**
COUNTY **Ellis** LOCATION **250 FSL # 230' FEL 36/4**
Elevations **KB 3016'**
Log by: **SEC 15 TWP 15S R0E 19W Q1 A006'**

Logging by: **1. Paul Inductom Log**
2. Dual Compressed Fossils Log
Log Tech: **SEC 15 TWP 15S R0E 19W Q1 A006'**
Contractor: **Southwind Drilling Rig #1**
Contracted: **10-21-2011**
RIG ID: **3684** CONRAD: **10-21-2011**
Surface casing: **8 7/8" set to 1233' w/ 2 3/8" set 3682 - Smith Services**

Daily Penetration Rate	Activity	Date	Depth	Activity
10-5-11	Rig Spud			
10-7-11	Day 588' 135'			
10-17-11	133X' 400C			
10-18-11	1485' Day			
10-20-11	2425' Day			
10-21-11	2600' Day 570' Log, PAB			

REMARKS: **Recommendation To Plug abandon well due To low QTAUCI-UC and lack of hydrocarbon shows on Reservoir development.**

Bit Record

Make & Type	Serial No.	Nozzles	Depth In	Depth Out	Hours

Formation

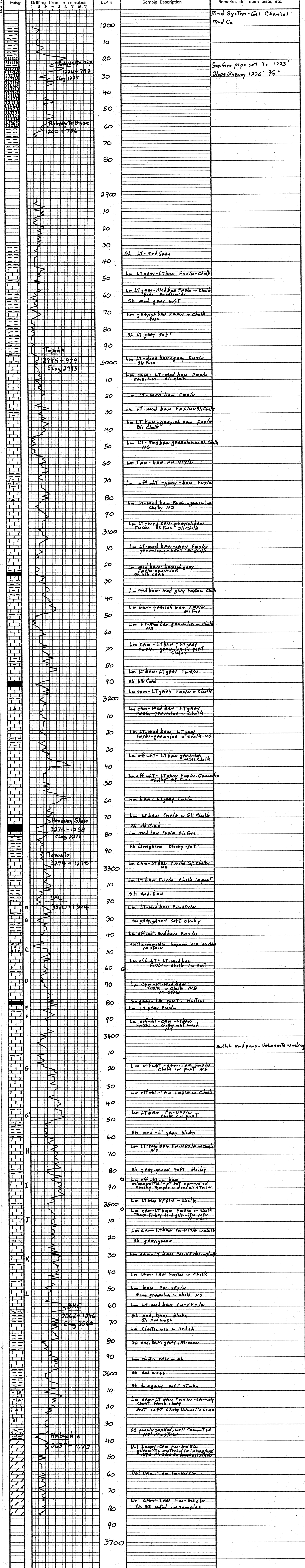
Formation	Sample	Log	Datum	* Formation	Sample	Log	Datum	*
Anhydrite Top			1227	+ 789				
Anhydrite Base			1260	+ 786				
Topeka			2993	- 977				
Heabruna Shale			3271	- 1255				
Topeka			3294	- 1278				
LISC			3320	- 1304				
BKC			3560	- 1544				
Arbuckle			3639	- 1623				
ATD	3684							
LTD			3682	- 1666				

* Structural Position to:

LEGEND

Anhydrite	Salt	Sandstone	Shale	Carb sh	Limestone	Ool. Lime	Chert	Dolomite

SCALE " = 100'



JOB LOG

SWIFT Services, Inc.

DATE 12-16-11 PAGE NO. 1

CUSTOMER T.O. I WELL NO. 2 LEASE CHARLOTTE JOB TYPE DEEP SURFACE TICKET NO. 21105

CHART NO.	TIME	RATE (BPM)	VOLUME (BBU) (GAL)	PUMPS		PRESSURE (PSI)		DESCRIPTION OF OPERATION AND MATERIALS
				T	C	TUBING	CASING	
	2030							ONLOCATION CMT: 375 S/S - S.M.D. 1/2" FLOODE 12/4 @ 1226 8 ^{3/4} @ 1224 SJ 29.17 Baffle Pipe 1125 CENT. L.P. TURBUZERS
	2315							START C.S. & FLUATE HOOKUP
	0055							BREAK CIRC 1/2" RIG
	0120	6.0	12.0				75	500 GAL MUD FLUSH
			10.0					10 bbls. MLL FLUSH
			0					CMT: 100 S/S @ 11.2 1/2"
			55.0					100 S/S @ 12.5
			93.0					100 S/S @ 13.0
			121.0					75 S/S @ 14.5
	0150		144.0					END CMT 375 S/S DRIP PLUG,
	0155	6.0	0				200	START DISP
			25.0				200	LIGHT CMT
			35.0				300	(L.C.M) CMT 75 S/S TOP. 7!
			65.0				400	
			70.0				500	
	0205	4.7	76.0				700	LAND PLUG HOLDING 700 PSI
	0210						700	CLOSE IN
	0215							JOB COMPLETE
								THANK YOU! DAVE JOSH, LANE

