

HERB DEINES
CONSULTING GEOLOGIST
108 W. 35th ST.
PH. 785-625-3880
HAYS, KS 67601

COMPANY I.D.I. Inc.
WELL IAWIN TUB #1
COUNTY Ellis STATE Kansas

LOGGING BY: JESSIE L. & LEO S. FAY, Sr & Jr
LOCATION: 1055' S1/4 & 1650' E1/4, Sec 9, T4N, R15E, S1/4, R12E, G1, 8005

Drilling Time 2900' - RTD
Daily Penetration Rate
Date Depth Activity

Date	Depth	Activity
11-02	1070'	Spud 8200m
11-03	1070'	Drill string out
11-04	1070'	Drill string out
11-05	2130'	Dial plug
11-06	2130'	Dial plug
11-07	2130'	Dial plug
11-08	3140'	Dial plug
11-09	3140'	Dial plug
11-09	3150'	Final DST
11-09	3150'	Final DST

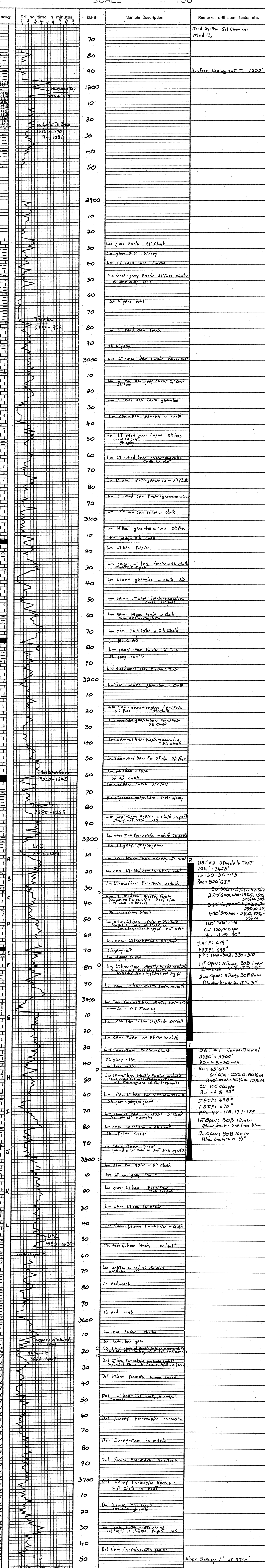
REMARKS: Recommendation to run casing based on numerous shows, favorable structure and positive results of DST #2

Formation	Sample	Log	Datum	* Formation	Sample	Log	Datum	*
Anhydrite Top		1203	+ 812					
Anhydrite Base		1208	+ 798					
Topokan	2976	2977	- 912					
Hebeava Shale	3260	3260	- 1245					
Toronto	3280	3280	- 1265					
LHC	3307	3306	- 1291					
BHC	3551	3550	- 1535					
Conglomerate Sand		3614	- 1599					
Anhydrite		3622	- 1607					
RTD		3750	- 1734					
LTD		3749	- 1734					

LEGEND

--	--	--	--	--	--	--	--	--

SCALE " = 100'



JOB LOG

SWIFT Services, Inc.

DATE 11-9-11 PAGE NO. 7

CUSTOMER TPI WELL NO. #1 LEASE Irwin Trust JOB TYPE Long string TICKET NO. 20366

CHART NO.	TIME	RATE (BPM)	VOLUME (BBL) (GAL)	PUMPS		PRESSURE (PSI)		DESCRIPTION OF OPERATION AND MATERIALS
				T	C	TUBING	CASING	
	1700							cc loc w/FE
								RTD 3750'
								5 1/2" x 14" x 3749' x 41'
								Cent 1, 2, 3, 5, 6, 8, 10, 12
								Busk 3, 13
	1815							start FE
	2005							Breakers
	2105	2.5	7/5					Plug RHY MH 30/20sks FA-2
	2115	4.5	0			200		start Mudflush
		4.5	12/0			200		start KCL flush
		5.5	20/0			250		start Cement 130sks FA-2
	2130		31					End Cement Wash P/L Drop L.P. Plug
	2133	6.5	0			150		Start Displacement
	2143	5	65			200		Catch Cement
	2148		90.5			500 400		Load Plug Release pressure Float Hold
								Thank you
								Nick, Josh F. & David E.

