

HERB DEINES  
CONSULTING GEOLOGIST  
108 W. 35th ST.  
PH. 785-625-3380  
HAYS, KS 67601

COMPANY TDI, Inc  
WELL Refers # 1  
FIELD  
COUNTY Ellis STATE Kansas  
LOCATION 1750' E 1/4 + 1700' E 1/4, Sec 4  
KB 2044  
DF  
01 2054'

Logging by: SEC 27 TWP 14S R06 18W  
Log Tech  
1. Dual Induction Log  
2. Dual Gamma Ray Log  
3. Dual Gamma Ray Log  
4. Dual Gamma Ray Log  
5. Dual Gamma Ray Log  
6. Dual Gamma Ray Log

Contractor Southland Drilling Inc. R/S # 1  
Commenced 10-03-2011  
R/D 9750' - 808' B/L  
LTD 3748' / 150285 (Common) 2% GA, 1% SC  
Surface casing 8 5/8" SST to 283' w/ 150285 (Common) 2% GA, 1% SC  
Production casing

Date	Depth	Activity	Date	Depth	Activity
9-28-11	575'	R/S prod strip			
9-29-11	575'	0.4h			
9-30-11	575'	0.4h			
10-01-11	2830'	B/L			
10-02-11	3385'	B/L			
10-03-11	3750'	R/S prod strip			

REMARKS: Recommendation To plug & Abandon well due To low STAVITINE & lack of shows of hydrocarbons.

Bit Record

Make	Type	Serial No.	Nozzles	Depth In	Depth Out	Hours

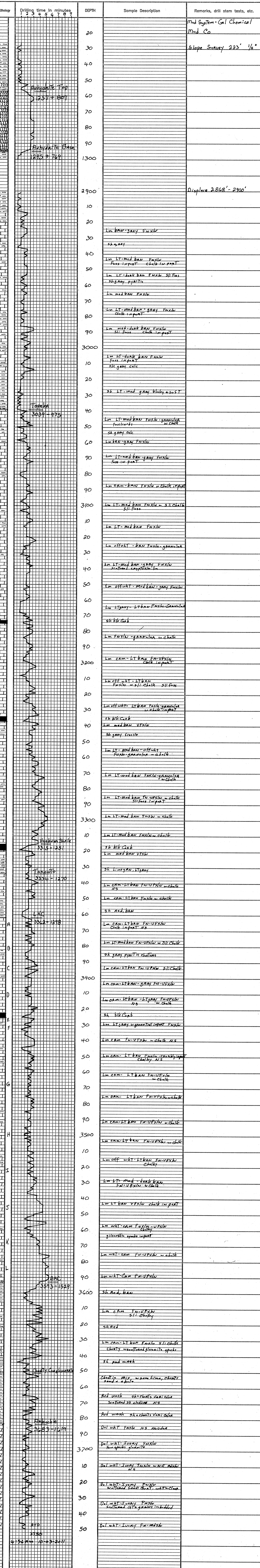
Formation Sample Log Datum \* Formation Sample Log Datum \*

Formation	Sample	Log	Datum	*	Formation	Sample	Log	Datum	*
Anhydrite Top	1257	1254	+ 810						
Anhydrite Base	1295	1291	+ 773						
Topokna	3039	3039	- 975						
Heabner Shale	3315	3314	- 1250						
Toronto	3337	3334	- 1270						
LKC	3362	3360	- 1278						
BHC	3593	3590	- 1526						
Charly Congl.	3690	3650	- 1586						
Arbuckle	3690	3683	- 1619						
R/D	3750	3748	- 1684						

\* Structural Position to:

LEGEND

SCALE " = 100'



# QUALITY OILWELL CEMENTING, INC.

Federal Tax I.D.# 20-2886107

Phone 785-483-2025  
Cell 785-324-1041

Home Office P.O. Box 32 Russell, KS 67665

No. 5007

Date	10-3-11	Sec.	27	Twp.	14	Range	18	County	Ellis	State	Kansas	On Location		Finish	2:30 p.m.
Lease	Phoebus	Well No.	1		Location		Hwy 45 3/4 N.W. 1/4								
Contractor	Southwind Drilling Rig 1							Owner							
Type Job	Plug							To Quality Oilwell Cementing, Inc. You are hereby requested to rent cementing equipment and furnish cementer and helper to assist owner or contractor to do work as listed.							
Hole Size	7 7/8		T.D.		3750		Charge To TDI								
Csg.			Depth				Street								
Tbg. Size			Depth				City State								
Tool			Depth				The above was done to satisfaction and supervision of owner agent or contractor.								
Cement Left in Csg.			Shoe Joint				Cement Amount Ordered 205 water 4 gal								
Meas Line			Displace				4 1/2 Flo Seal per sk								

**EQUIPMENT**

Pumptrk	5	No.	Cementer	Steve	Common	123
Bulktrk	3	No.	Driver	Chris	Poz. Mix	E2
Bulktrk		No.	Driver	Carly	Gel.	7

**JOB SERVICES & REMARKS**

Remarks:	Hullis
Rat Hole	Salt
Mouse Hole	Flowseal 504
Centralizers	Kol-Seal
Baskets	Mud CLR 48
D/V or Port Collar	CFL-117 or CD110 CAF 38
1st Plug @ 3655	25 sk
2nd " " 1275	25 sk

**FLOAT EQUIPMENT**

3rd " " 560	100 sk	Guide Shoe
4th " " 40	10 sk	Centralizer
Port Hole	30 sk	Baskets
Mouse Hole	15 sk	AFU Inserts
		Float Shoe
		Latch Down
		8 3/8 Wood Plug

Pumptrk Charge  
Mileage 7 plug

X Signature *[Handwritten Signature]*

Tax	
Discount	
Total Charge	

# QUALITY OILWELL CEMENTING, INC.

Federal Tax I.D.# 20-2886107

Phone 785-483-2025  
Cell 785-324-1041

Home Office P.O. Box 32 Russell, KS 67665

No. 5345

Date	Sec.	Twp.	Range	County	State	On Location	Finish
9-28-11	27	14	28	Ellis	KS		7:15pm
Lease	Well No.		Location				
Plaster	1		Hayes Buttered Tied 3/4" 2 1/2"				

Contractor	Owner
Southwind #1	To Quality Oilwell Cementing, Inc.
Type Job	You are hereby requested to rent cementing equipment and furnish cementer and helper to assist owner or contractor to do work as listed.
Hole Size	Charge To
12 1/4	T.D. 225
Csg. 8 5/8	Depth 223
Tbg. Size	Street
	City
Tool	State
Cement Left in Csg. 15'	Shoe Joint
	The above was done to satisfaction and supervision of owner agent or contractor.
Meas Line	Displace 13 BCL
	Cement Amount Ordered 150 COM 3 1/2" 20/60

**EQUIPMENT**

Pumptrk	No.	Cementer	Helper	Common
5		Craig		150
Bulktrk	No.	Driver	Driver	Poz. Mix
		Steve		
Bulktrk	No.	Driver	Driver	Gel.
14		Con		3

**JOB SERVICES & REMARKS**

Remarks:	Hulls
Rat Hole	Salt
Mouse Hole	Flowseal
Centralizers	Kol-Seal
Baskets	Mud CLR 48
D/V or Port Collar	CFL-117 or CD110 CAF 38
8 5/8 on bottom. Est Circulation	Sand
Mix 130 SC & Displace	Handling 15 #
Cement (Circulated)	Mileage

**FLOAT EQUIPMENT**

Guide Shoe	
Centralizer	
Baskets	8 5/8 Swage
AFU Inserts	
Float Shoe	
Latch Down	

Thank's!

X Signature *[Signature]*

Pumptrk Charge	Surface
Mileage	7
Tax	
Discount	
Total Charge	