

108 W. 36th ST.
PH. 785-625-3380

HERB DENNES

CONSULTING GEOLOGIST
HAYS, KS 67601

COMPANY IDI, Inc.

WELL # 1

FIELD Selawichaw

COUNTY Ellis STATE Kansas

LOCATION: L80'EVL & 2190'EEL NE/4

SEC 28 TWP 15S RGE 18E

Logging by: Sec 28 TWP 15S RGE 18E

1 Dual Induration Log
2 Dual Induration Resistivity Log
3 Induction Resistivity Log

Contractor Southern Day, Inc. Rig #1

Compendium 9-05-2011

Production Ceiling 3745' set to 3745' w/ 200 sds E&B DWG 2003 w/ 125 sds SMD

Drilling Time 2950 - FID Samples 2950 - A17D

300 sds in RTD, 20 sds in mudstone, 5 sds in S&T, 20 sds in T&N, 20 sds in SMD

Daily Penetration Rate

Date	Depth	Activity	Date	Depth	Activity
8-30-11	637'	FT Spud, S&T SP			
9-01-11	1983'	DA5			
9-02-11	2783'	DA5			
9-03-11	3385'	DA5			
9-04-11	3414'	5th of 4, RTD Log			
9-05-11	3745'	Finish Log, Run to AO			

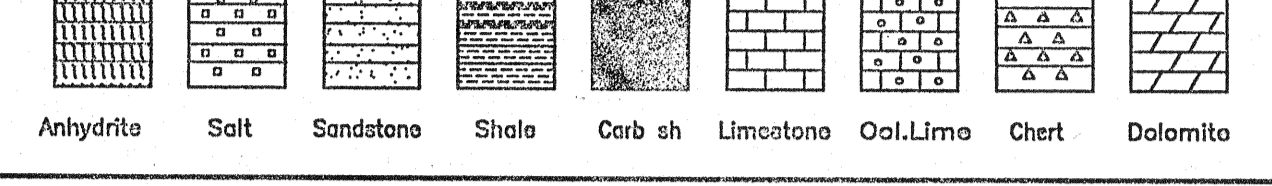
REMARKS: Recommendation to run production casing based on favorable stratigraphic structure and positive results of DST #1.

Bit Record

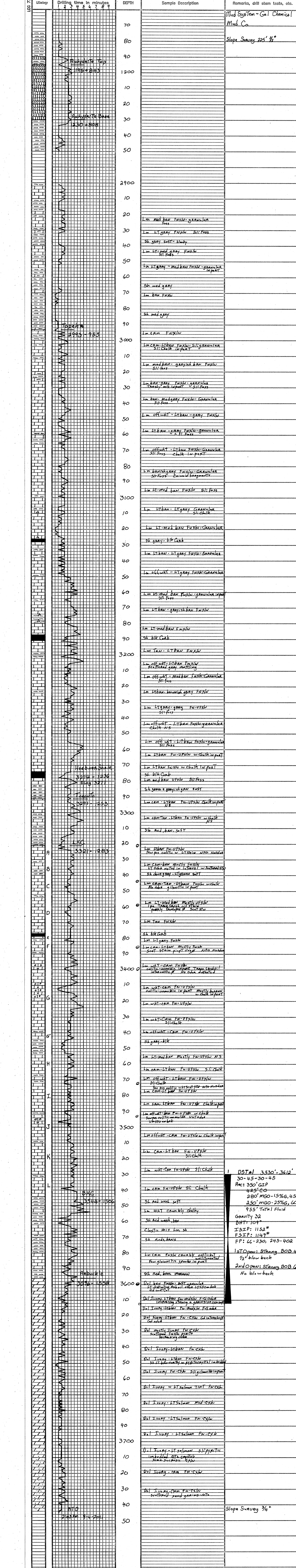
Make & Type	Serial No.	Nozzles	Depth In	Depth Out	Hours

Formation	Sample	Log	Datum	%	Formation	Sample	Log	Datum	%
Anhydrite Top	1196	1195	+843						
Anhydrite Base	1233	1230	+808						
Topeka	2994	2993	-955						
Heeburn Shale	3274	3271	-1283						
Tenon	3274	3291	-1253						
LKC	3523	3321	-1283						
BMC	3547	3544	-1506						
Arbuckle	3574	3576	-1558						
RTD		3744	-1706						

LEGEND



SCALE 1" = 100'



QUALITY OILWELL CEMENTING, INC.

Federal Tax I.D.# 20-2886107

Phone 785-483-2025
Cell 785-324-1041

Home Office P.O. Box 32 Russell, KS 67665

No. 5084

Date	8-30-11	Sec.	22	Twp.	15	Range	18	County	Ellis	State	Kansas	On Location		Finish	9:45 PM	
Lease	Willard	Well No.	1	Location	Hays 95 SE											
Contractor	Southwind Drilling Rig 1							Owner	To Quality Oilwell Cementing, Inc. You are hereby requested to rent cementing equipment and furnish cementer and helper to assist owner or contractor to do work as listed.							
Type Job	Surface							Charge To	TDI							
Hole Size	12 1/4		T.D.	225												
Csg.	8 3/8 23 1/2		Depth													
Tbg. Size				Depth												
Tool				Depth												
Cement Left in Csg.	10-15'		Shoe Joint													
Meas Line				Displace	134.761		Cement Amount Ordered	150 Common 3/4" 2" 2 1/2"								

EQUIPMENT

Pumptrk	5	No.	Cementer		Common	150
			Helper	Steve		
Bulktrk	14	No.	Driver	Craig	Poz. Mix	
			Driver			
Bulktrk		No.	Driver	Michael	Gel.	3
			Driver		Calcium	5

JOB SERVICES & REMARKS

Remarks:	Hulls
Rat Hole	Salt
Mouse Hole	Flowseal
Centralizers	Kol-Seal
Baskets	Mud CLR 48
D/V or Port Collar	CFL-117 or CD110 CAF 38
	Sand
	Handling 158
	Mileage

Cement did Circulate

FLOAT EQUIPMENT

	Guide Shoe
	Centralizer
	Baskets
	AFU Inserts
	Float Shoe
	Latch Down
	Surge
	Pumptrk Charge Surface
	Mileage 10

Signature	Frank Rame	Tax	
		Discount	
		Total Charge	

JOB LOG

SWIFT Services, Inc.

DATE 7-5-11 PAGE NO.

CUSTOMER **TDI** WELL NO. **#1** LEASE **Willard** JOB TYPE **2-stage** TICKET NO. **20359**

CHART NO.	TIME	RATE (BPM)	VOLUME (BBL) (GAL)	PUMPS		PRESSURE (PSI)		DESCRIPTION OF OPERATION AND MATERIALS
				T	C	TUBING	CASING	
	0545							0, loc 4.1 FE
								BTD 3745' LTD 3744'
								5 1/2" X 14" X 3745' X 39'
								Cent 1, 3, 5, 7, 9, 11, 13, 59, 79
								Baskets 2, 13, 60, 80
								DV 60 @ 1205'
	0900							Start FE
	1045							Break Circulation
	1155	4.5	0			150		Start Pre-flushes 5-000 gal Mud flush 20 bbl KCL & flush
	1202	5.5	32/0			200		Start Cement 150 50 EA-2
	1210		36					End Cement
								Wash P/L
								Drop LD Plug
	1214	6.5	0			150		Start Displacement
	1224	5	68			200		Catch Cement KCL in last 20 bbl
	1230		90.5			600/1200		Land Plug
								Release Pressure
								Float Hold
								Drop Opening Plug
	1235	2.5	7/5					Plug RH+MH 30/20 sks SMD
	1245					1100		Open D.V.
	1247	6	0			100		Start Cement 125 sks SMD
	1259		70					End Cement
								Drop Closing Plug
	1302	5	0			100		Start Displacement
	1307	4	26			350		Circ Cement
	1308		29.5			450/1400		Land Plug
								Close DV
								Release Pressure
								D.V. Closed
								Circ 25 sks to pit
								Thank you
								Nick, Josh F. & Rob